

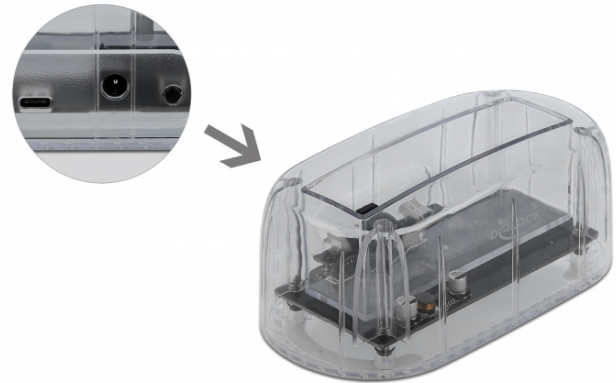
Delock USB Type-C™ Docking Station for 1 x SATA HDD / SSD transparent

Description

This Docking Station by Delock enables an external connection of **one 2.5" or 3.5" SATA HDD or SSD** through the **USB-C™** interface. This solution does not require an external enclosure since the drive can just plug in directly into the docking station. The included USB cables allow the connection to a free USB Type-A or USB-C™ port.

Transparent enclosure

The **sturdy, transparent plastic housing** provides a view inside.



Specification

- Connectors:
 - 1 x SuperSpeed USB 10 Gbps (USB 3.2 Gen 2) USB Type-C™ female
 - 1 x SATA 6 Gb/s 22 pin receptacle
 - 1 x DC jack
- Chipset: VIA VL716
- On / Off switch
- For 2.5" and 3.5" SATA HDD / SSD
- Suitable for all SATA HDDs up to SATA 6 Gb/s
- Data transfer rate up to 6 Gb/s
- LED indicator for power and access
- Transparent plastic housing
- Dimensions (LxWxH): ca. 142 x 75 x 58 mm
- Plug & Play

Power supply specification

- Wall power supply
- Input: AC 100 ~ 240 V / 50 ~ 60 Hz / 1 A
- Output: 12 V / 2 A
- Ground outside, plus inside
- Dimensions:
 - inside: ø ca. 2.1 mm
 - outside: ø ca. 5.5 mm
 - length: ca. 10 mm

System requirements

- Chrome OS 74.0 or above
- Linux Kernel 3.3 or above
- Mac OS 10.14.5 or above
- Windows 7/7-64/8.1/8.1-64/10/10-64
- PC or laptop with a free USB Type-C™ port or
- PC or laptop with a free USB Type-A port

Package content

- Docking station
- Cable USB-C™ male to USB-C™ male, length ca. 50 cm
- Cable USB-C™ male to USB Type-A male, length ca. 1 m
- External power supply 12 V / 2 A
- User manual

Item no. 64089

EAN: 4043619640898

Country of origin: China

Package: • Retail Box



Images



| General | |
|-----------------------------|---|
| Function: | Plug & Play |
| Suitable for data medium: | 2.5" 3.5" SSD or HDD |
| Supported operating system: | Windows 7 32-bit Windows 7 64-bit Windows 8.1 32-bit Windows 8.1 64-bit Windows 10 32-bit Windows 10 64-bit Linux Kernel 3.3 or above Mac OS 10.14.5 or above Chrome OS 74.0 or above |
| Interface | |
| External: | 1 x SuperSpeed USB 10 Gbps (USB 3.2 Gen 2) USB Type-C™ female 1 x DC jack |
| Internal: | 1 x SATA 6 Gb/s 22 pin receptacle |
| Technical characteristics | |
| Chipset: | VIA VL716 |
| Physical characteristics | |
| Housing material: | Plastic |
| Length: | 142 mm |
| Width: | 75 mm |
| Height: | 58 mm |
| Colour: | transparent |