

Delock M12 Connector A-coded 8 pin female for mounting with screw connection

Description

This connector by Delock can be used to connect a cable via a screw terminal connection with an M12 connector, e.g. for machine control or automation.



Item no. 60538

EAN: 4043619605385

Country of origin: China

Package: Zip poly bag

Specification

- Connectors:
 - 1 x M12 female A-coded 8 pin
 - 8 x screw terminal
- Useable for a cable gauge range from 26 to 20 AWG (0.13 - 0.52 mm²)
- Operating voltage: max. 30 V
- Current: max. 2 A
- Operating temperature: -25 °C ~ 85 °C
- Protection class: IP67
- Cable entry max. 3.0 - 8 mm
- Thread size: M12 x 1.0 mm
- Housing material: PA66
- Colour: black
- Dimensions (LxD): ca. 52 x 20 mm

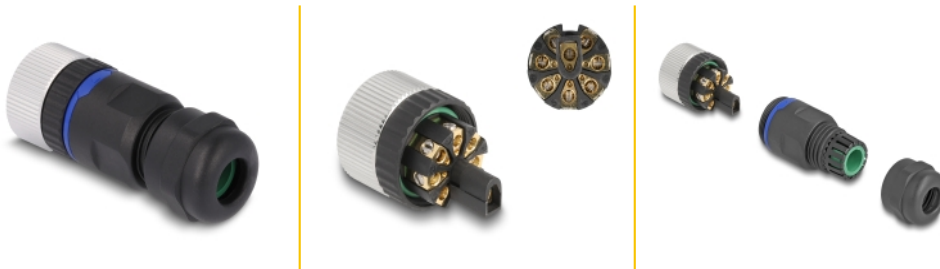
System requirements

- A free M12 male port

Package content

- Connector

Images



Interface

Connector 1:	1 x M12 female
--------------	----------------

Technical characteristics

Operating voltage:	60 V
Operating temperature:	-25 °C ~ 85 °C
Current consumption:	4 A
Protection class:	IP67

Physical characteristics

Housing material:	Plastic
Pin finishing:	gold-plated
Diameter:	20 mm
Length:	50 mm
Colour:	black