

# Delock Keystone Patch Panel 12 Port black

## Description

This patch panel by Delock can be used as a junction box on the wall or in enclosures. Additionally, clips for DIN rail mounting are included.

With its standardized dimensions, it is suitable for easy snap-in mounting of 12 Keystone modules.



## Note

Due to the narrow design only Keystone modules up to max. 18.0 mm width can be used.

## Specification

- 12 Keystone ports 19.2 x 14.9 mm
- Cable routing 180°
- Shielded
- Metal housing
- Colour: black
- Dimensions (LxWxH): ca. 232.0 x 112.5 x 45.2 mm

## Package content

- Keystone patch panel
- 2 DIN-rail clips
- 2 screws
- 12 zip-tie

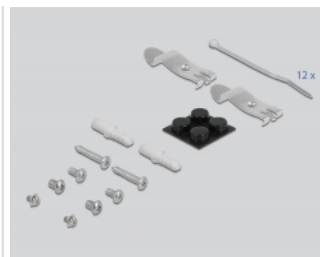
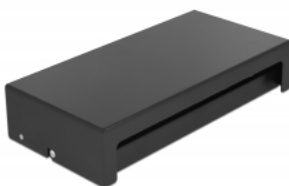
## Item no. 43415

EAN: 4043619434152

Country of origin: China

Package: White Box

## Images



**General**

Mounting type: wall  
DIN rail

**Technical characteristics**

Shielding: shielded

**Physical characteristics**

Housing colour: black  
Housing material: metal  
Length: 232 mm  
Width: 112.5 mm  
Height: 45.2 mm