

# Delock External USB Type-C™ Combo Enclosure for M.2 NVMe PCIe or SATA SSD - tool free

## Description

This enclosure by Delock enables the installation of an **M.2 PCIe NVMe SSD or SATA M.2 SSD** in 2280, 2260 and 2242 format. It can be connected via USB to the PC or laptop. The **robust metal housing with cooling fins** ensures an optimum temperature of the memory.

### Combo enclosure

The big advantage of this Delock M.2 enclosure is that both SATA and PCIe (NVMe) M.2 SSDs can be inserted into the enclosure. The memory is automatically recognized by the chipset and can then be used.

### SSD installation without tools

The special feature of this enclosure is that no tools are required to install the M.2 SSD. The lid is pushed backwards and the SSD is plugged into the slot, pressed down until it locks into place at the corresponding snap nose. Then the lid is reattached until it locks.



## Specification

- Connectors:  
external: 1 x SuperSpeed USB 10 Gbps (USB 3.2 Gen 2) USB Type-C™ female  
internal: 1 x 67 pin M.2 key M slot
- Chipset: Realtek RTL9210B
- Supports M.2 modules in format 2280, 2260 and 2242 with key B or key B+M based on SATA or PCIe (NVMe)
- Maximum height of the components on the module: 1.5 mm, application of double-sided assembled modules supported
- Supports NVM Express (NVMe)
- Bootable
- Data transfer rate up to 10 Gbps
- LED indicator for power and access
- Metal housing
- Dimensions (LxWxH): ca. 117 x 40 x 13 mm
- Hot Plug, Plug & Play

## System requirements

- Android 9.0 or above
- Chrome OS 78.0 or above
- Linux Kernel 4.6.4 or above
- Mac OS 10.15.3 or above
- Windows 8.1/8.1-64/10/10-64
- PC or laptop with a free USB Type-C™ port
- PC or laptop with a free Thunderbolt™ 3 port

## Package content

- External enclosure M.2
- Cable USB-C™ male to USB-C™ male, length ca. 30 cm
- Cable USB-C™ male to USB Type-A male, length ca. 30 cm
- 2 x thermal conductive pad
- 1 x thermal conductive plate
- User manual

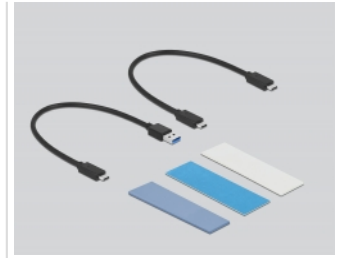
## Item no. 42638

EAN: 4043619426386

Country of origin: China

Package: • Retail Box

Images



General	
Function:	NVM Express (NVMe) Plug & Play
Supported operating system:	Windows 8.1 32-bit Windows 8.1 64-bit Windows 10 32-bit Windows 10 64-bit Linux Kernel 4.6.4 or above Android 9.0 or above Chrome OS 78.0 or above Mac OS 10.15.3 or above
Supported module:	Supports M.2 modules in format 2280, 2260 and 2242 with key B or key B+M based on SATA or PCIe (NVMe)
Maximum height of the components on the module:	1.5 mm application of double-sided assembled modules supported
Interface	
External:	1 x SuperSpeed USB 10 Gbps (USB 3.2 Gen 2) USB Type-C™ female
Internal:	1 x 67 pin M.2 key M slot
Technical characteristics	
Chipset:	Realtek RTL9210B
Data transfer rate:	up to 10 Gbps
Physical characteristics	
Housing material:	Aluminium
Cable length:	30 cm
Length:	117 mm
Width:	40 mm
Height:	13 mm