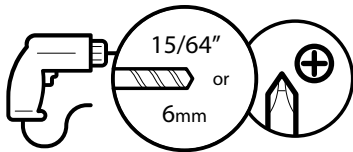
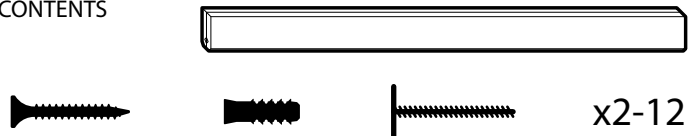


# INSTALLATION INSTRUCTIONS

## TOOLS

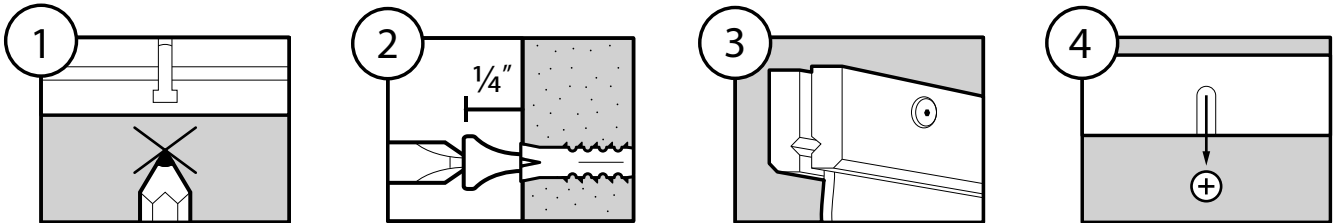


## CONTENTS



Step 1: With a partner holding the frame in the desired location, mark the wall at each of the key slots, one inch below where you want the top of the frame to be once installed, and one inch from the bottom, making sure to be level. Step 2: Using 15/64" or 6mm drill bit, drill hole and insert wall anchor. Insert the phillips head screws until they are 1/4" from flush with the wall. Step 3: With a partner, align your textile with the "v" groove of the top back frame member and tighten top front member on top using provided finish hardware. Repeat for bottom frame members. Step 4: To finish mounting your textile to the wall, slide frame members down so screws go into key slots.

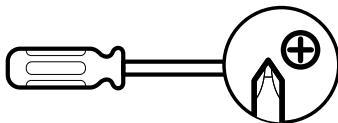
Note: Attaching at least one screw to a wall stud is recommended. For assembly of widths 92" and greater, see other side.



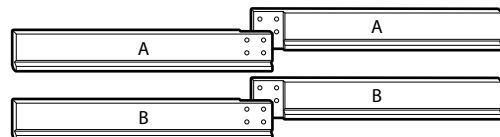
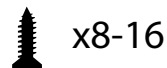
Questions or concerns? Email us at [hello@wearewellmade.com](mailto:hello@wearewellmade.com)  
Designed & manufactured in Chicago, USA

# ASSEMBLY INSTRUCTIONS (FOR FRAMES 92"+)

## TOOLS



## CONTENTS



Step 1: Join together matching pieces labeled "A" as shown below. Place short screws through countersunk holes and into the bottom piece to align. Step 2: Using a screwdriver, tighten the screws to attach the two pieces together, being careful not to overtighten. Pair remaining pieces "B", "C" and "D" and repeat.

