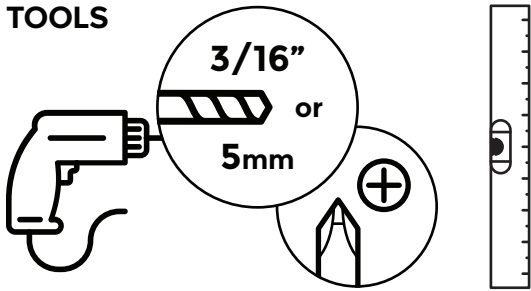
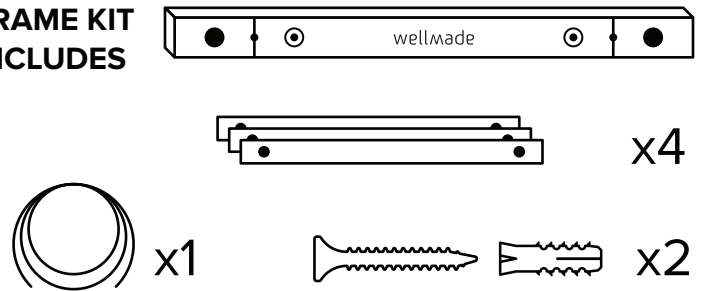


# MAGNETIC FRAMING: INSTALLATION

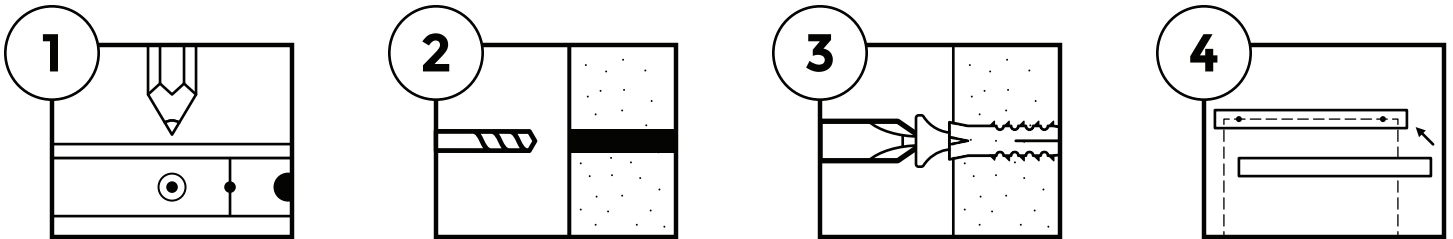
## TOOLS



## FRAME KIT INCLUDES



**SCREWS & ANCHORS**, Locate frame slat with the string holes, this is the top-back of the frame. Hold level to wall, mark screw holes (fig. 1). Drill two holes, insert anchors, then install screws (fig. 2-3). Place artwork, then frame top (fig. 4). Bottom pair can be installed (hardware not included), or left to weigh down print.



**STRING HANGER**, Locate frame piece with string holes, this is the top-back of the frame. Place string through holes, magnet-side first (fig. 1), knot string on both ends and trim excess (fig. 2). Combine artwork and top-front piece, resting the string in both vertical slots (fig. 3). Add bottom frame pair to artwork, then hang (fig. 4).

