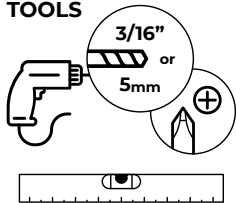
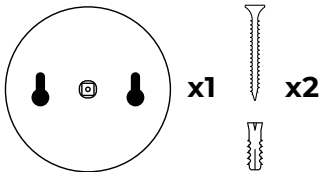


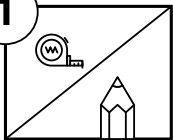
## TOOLS



## HARDWARE

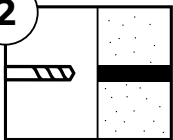


1

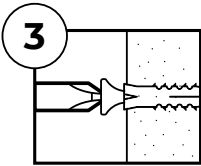


**TO INSTALL,** Cut along dotted line below and tape guide where you want your Photo Puck, making sure to be level. Drill through crosshairs, insert anchors and install screws  
– **fine-tune screw depth for a snug fit.**

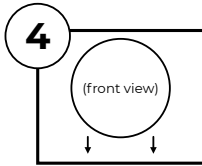
2



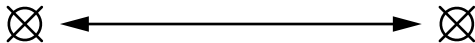
3



4



Drill through cross hairs using an 3/16", or 5mm, drill bit



QUESTIONS? [hello@wearewellmade.com](mailto:hello@wearewellmade.com)  
Designed & manufactured in Chicago, USA  
Inspected by hand for quality