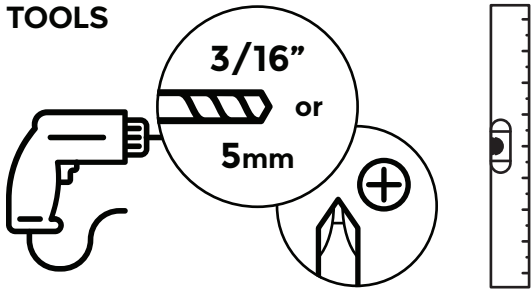


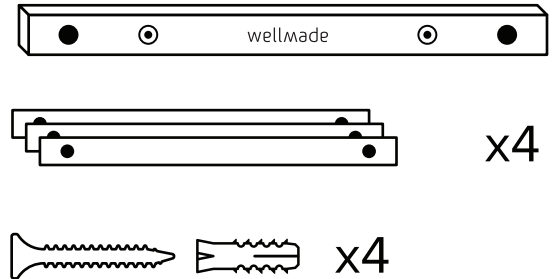


# CUSTOM MAGNETIC FRAMING: INSTALLATION

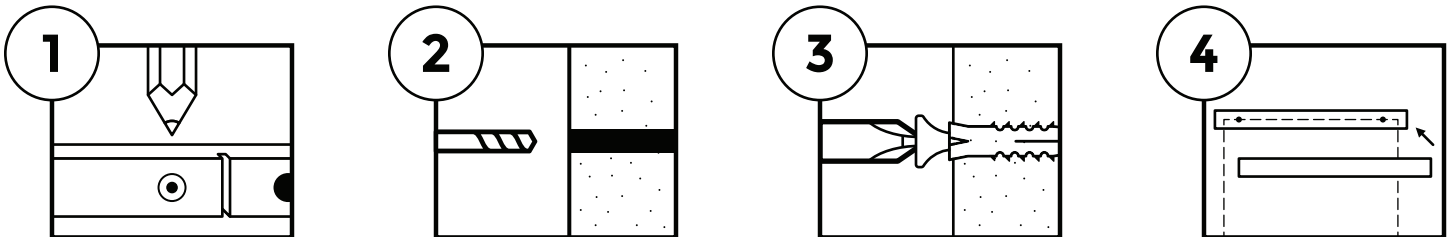
## TOOLS



## FRAME KIT INCLUDES



**SCREWS & ANCHORS**, Locate frame slat with the vertical slots, this is the top-back of the frame. Hold level to wall, mark screw holes (fig. 1). Drill two holes, insert anchors, then install screws (fig. 2-3). Place artwork, then frame top (fig. 4). Bottom pair can be installed (hardware not included), or left to weigh down print.



**CAUTION:** These frames function by clamping your artwork. It is possible that some materials may see slight indentations. Adjusting artwork after it is clamped in place may result in paint transfer. Unclamp frame from artwork prior to adjustments.