

BEATA HEUMAN

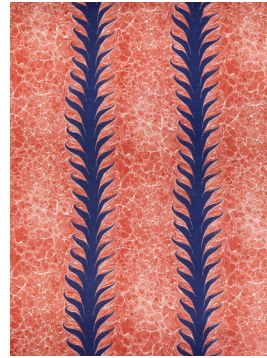
PALM DROP



SEA GREEN/CHALK
(FABPMDSGC)



SKY BLUE/PLASTER
(FABPMDSBP)



SQUID INK/BRICK
(FABPMDSQB)

GENERAL INFO:

- Creases can occur from time to time in transit. These can be steamed out with ease prior to use.
- Fabrics are cut to your desired length and are therefore a bespoke and non-returnable item.
- No claims for faulty fabrics can be made after the fabrics have been cut for application.
- All intellectual property rights in designs are owned by Beata Heuman Limited.

STAIN REMOVAL AND CLEANING:

- Dry clean only. Please consult a professional upholstery or drapery cleaner should any stains or marks occur, and/or for routine cleaning and maintenance.

FIRE RATING:

- All our fabrics have passed the Cigarette FR test, but for upholstery need to be used in combination with a suitable FR interliner or backing to meet relevant FR standards.

| PRODUCT: | DESCRIPTION & DETAILS: | REVISION: |
|--|---|-----------------|
| Category: Fabric Product: Palm Drop | Fabric width: 142cm Usable width: 137cm Vertical Repeat: 59cm Horizontal Repeat: 67.5cm Composition: 82% viscose, 18% linen | Rev A: 09.11.23 |

188

HAMMERSMITH ROAD, LONDON W6 7DJ +44(0)208 741 0102 INFO@BEATAHEUMAN.COM

BEATA HEUMAN LTD. REGISTERED IN THE UK. COMPANY NO: 08772279 VAT: 233 7034 32