

**Tenda**



All for better networking.

**O6**

5GHz 433Mbps Outdoor Point to Point CPE

[www.tendacn.com](http://www.tendacn.com)



# O6

## 5GHz 433Mbps Outdoor Point to Point CPE

### What It Does

O6 5GHz 433Mbps outdoor Point to Point CPE is designed to WISP CPE solutions and long distance wireless network solutions for video surveillance and data transmission. It features with an external power amplifier and a built-in 16dBi directional antenna to provide an

efficient way to pick up and maintains a stable signal for a wireless network connection range up to 10 kilometers.

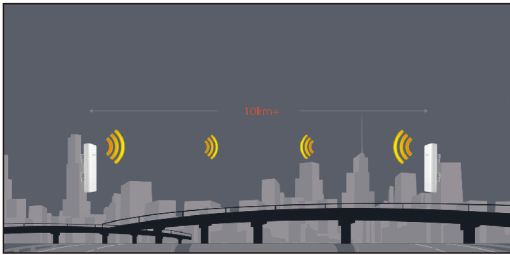
### Main Features

- 5GHz 11AC 433Mbps
- IP64 waterproof enclosure
- 16dbi directional antenna
- AP,Station,WISP etc operating mode supported
- Up to 60 meters of flexible deployment with included PoE Injector



## 5GHz 11AC 433Mbps

O6 adopts of 11AC technology and gigabit ethernet port to boost the throughput performance on the wireless connection.



## 10km+ Wireless Data Transmission

O6 is specially designed for outdoor long range point to point application scenarios. Adopt of external power amplifier and 16dBi antenna to achieve 10km+ wireless data transmission range.



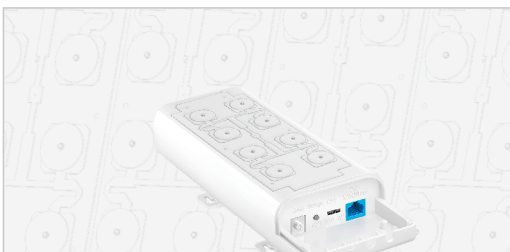
## Bridge two device at a push of button

O6 comes with an operating mode switch, you can switch the device to work as AP mode or Station mode without login to web UI. When one works as AP mode and another works as Station(Client) mode, you can bridge two devices together at a push of Bridge/RST button.



## Smart Signal Indicator LED

3 signal LED Lights represent the currently signal strength that O6 receives from peer device. It is helpful to find the right location to deploy the device and achieve a better performance.



## Advanced Antenna System

O6 adopts of specific antenna array and metal reflector to deliver higher gain and optimized transmission quality.



## Professional Outdoor Design

Equipped with IP64 waterproof enclosure and 6kv lightning protection capability, O6 can work in various weather conditions, such as sunshine, rainfall, wind, snow or extremely low/high temperature environment

## Multiple Application Scenarios



### Long-Distance Wireless Connection

One work as AP mode and another work as Station mode to create a long distance wireless connect for video surveillance and data transmission.



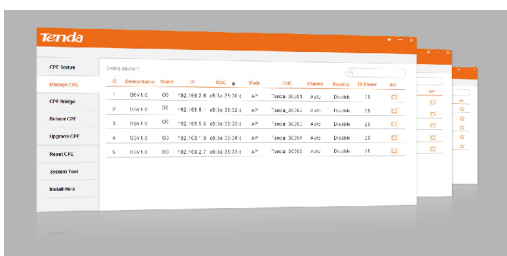
### WISP(Client+Router) Mode

Wirelessly connect to WISP station/hotspot to share Internet to local wireless and wired network.



### P2MP Link

Link multi AP in a network, all the associated client can communicate with each other.



## Easy to Manage

O6 comes with a centralized management software that helps users easily to manage all the devices in the network from a single PC-CPE Assistant.

# Specifications

## Hardware Features

Dimensions	270*94.86*67.5mm
Frequency Range	5GHz
Maximum wireless speed	433Mbps
CPU Processor	Broadcom 800MHz
GND Terminal	1
Interface	1*GE PoE/WAN/LAN port
Mode Switch	Station: The device only work in Station mode
	Off: The device work on AP/Station/Universal Repeater/WISP/Router mode
	AP: The device only work in AP mode
Button	Reset: Press 10 seconds or more to restore to default settings
	Bridge: Press 3 seconds and release it to bridge uplink AP
Antennas	16dbi Directional Antenna
Antenna Beamwidth	Horizontal: 30° Vertical: 15°
Maximum Power Consumption	9W
Lightning Protection	6KV
Waterproof Level	IP64
LED indicator	LAN,LED1,LED2,LED3
Power Supply	24v 0.5A PoE Injector

## Software Features

Operating mode	AP/Station/Universal Repeater/WISP/Router
Compliant Standards	IEEE 802.11ac/n/a
Wireless Features	Enable/Disable Wireless Radio
	SSID Hidden
	Wireless Client isolation
	Sensitivity Threshold
	WMM Capable
	APSD Capable
	Wireless Access Control
	Wireless Client list
Wireless Security	64/128 WEP,WPA-PSK,WPA2-PSK,WPA&WPA2-PSK,WPA,WPA2
Transmission Power	Adjustable power by 1dBm
Receiver sensitivity	MCS0: -90dbm
	MCS7: -72dbm
DHCP Server	DHCP Server
	Clients list
VPN Pass-Through	PPTP,L2TP
Remote Web access	Support

# Specifications

## Software Features

Schedule Reboot	Support
Page Timeout	Support
Ping Watchdog	Support
Speed Test	Support
Dyndns	noip, dyndns.org
Network Diagnoses	Ping, Traceroute, Signal Scan
Management Tool	Time&Date Setting
	System Log
	Firmware update
	Backup/Restore Configuration
	Username Management

## Others

Package Contents	5GHz 433Mbps Outdoor Point to Point CPE
	Power Adapter
	Ethernet cable
	Two Plastic Staps
	Quick Installation Guide
Operating Temperature	-20 C ~ 55 C
Storage Temperature	-40 C ~ 70 C
Operating Humidity	10%~90% non-condensing
Storage Humidity	10%~90% non-condensing
Default Settings	IP Address: 192.168.2.1
	Login Username:admin Login Password:admin
Certifications	FCC/CE/RoHS

## SHENZHEN TENDA TECHNOLOGY CO.,LTD.

Tenda Technology Bldg.Int l E-City,  
#1001 Zhong Shan Yuan Rd.,Nanshan District,Shenzhen China.

E-mail:support@tenda.com.cn

Tel:+86-755-2765 7098

Fax:+86-755-2765 7178

PC:518055