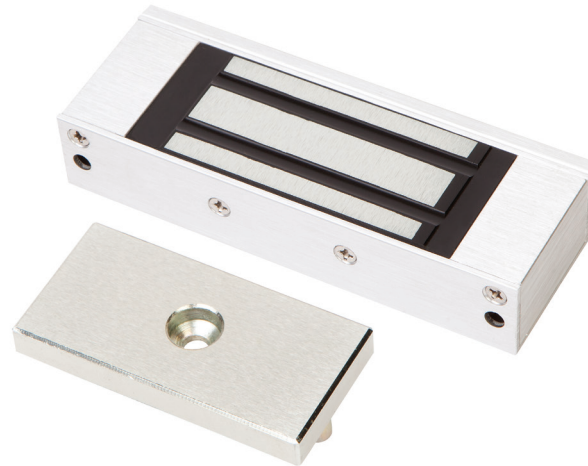


CCW15S

Electro Magnetic MICRO Lock Non Monitored Single

CCW15S DESCRIPTION



The **LOX CCW15S** Electro Magnetic MICRO Lock was designed for securing hinged doors on lockers, cabinets and the like. The holding force is **75kg**.



CCW15S

NON MONITORED SINGLE ELECTRO MAGNETIC MICRO LOCK

SPECIFICATIONS

CCW15S	SINGLE ELECTRO MAGNETIC MICRO LOCK NON MONITORED
HOLDING STRENGTH	UP TO 75KG, TESTED TO 400.000 CYCLES
VOLTAGE/CURRENT	DUAL VOLTAGE 12/24VDC 12VDC = 240mA 24VDC = 120mA
APPROVALS	CE & C-TICK  
ENVIRONMENTAL	OPERATIONAL TEMPERATURE RANGE - 20 DEG. C TO 60 DEG. C.

LOX
LOCKING

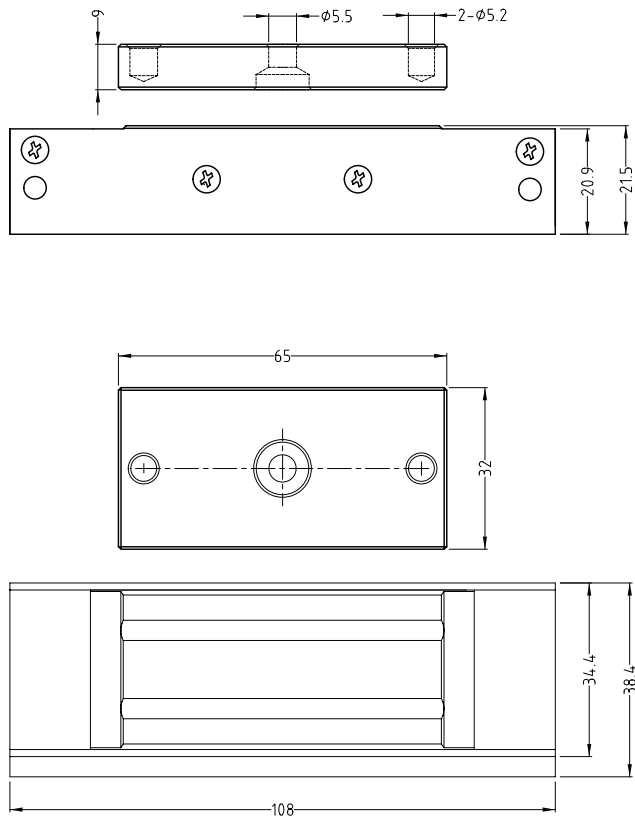
LOX LOCKING PTY LTD | www.loxlocking.com.au

LOX[®]

CCW15S

Electro Magnetic MICRO Lock Non Monitored Single

PRODUCT DIMENSIONS



Dimensions (mm)

CCW15S FACTS

- Built-in varistor (MOV) surge protection
- CE/RCM Approvals
- Lifetime warranty
- No residual magnetism

LOX
LOCKING

LOX LOCKING PTY LTD | www.loxlocking.com.au

LOX[®]