

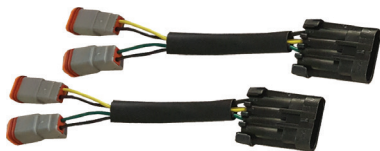


## INSTALLATION INSTRUCTIONS

# VxSPEC UPGRADE VEHICLE SPECIFIC LIGHTING

## POLARIS RZR 900 LED HEADLIGHT KIT

Installation Instructions & User's Manual



## About The Polaris RZR 900 LED Headlight Kit



### **FEATURES**

1. No drilling required.
2. High grade powder coated steel.
3. Single 10 watt LED produces 883' of usable light.

### **POLARIS RZR LED HEADLIGHT KIT SPECIFICATIONS**

- |                  |                      |
|------------------|----------------------|
| 1. Warranty      | : Extended           |
| 2. Amp Draw      | : 3.33A @ 12V DC     |
| 3. Input Voltage | : 9-32V DC           |
| 4. Beam Patterns | : 10°, 15° with Halo |
| 5. LED Lifespan  | : 50,000 Hours       |

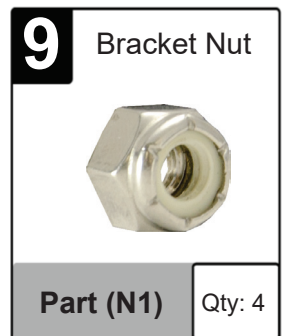
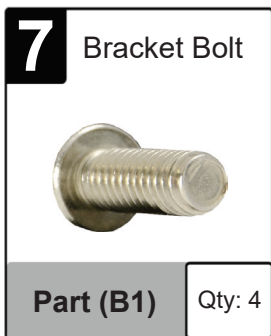
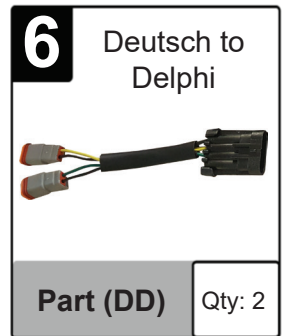
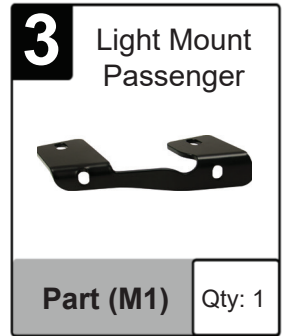
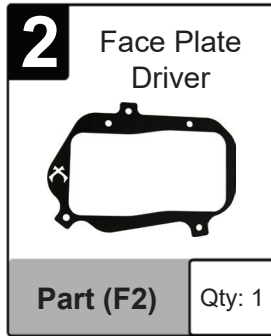
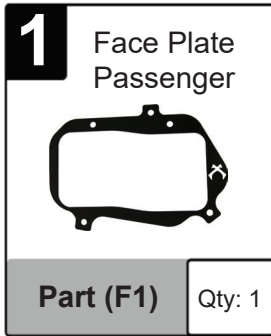
### **PREPARATION**

1. We recommend completely reading instructions before installing.
2. Consult your local state regulatory agency regarding the use of LED lighting.
3. The placement of LED lighting should not restrict airflow to the radiator, or block head lamps, turn signals, or parking lights.

### **MAINTENANCE**

1. All Vision X models have been designed for maintenance free use. In the case an LED lamp or other part replacement is needed please contact your authorized service center.

# RZR LED HEADLIGHT KIT



## WARNINGS

As with many other high-tech products, this VISION X LED requires a bit of attention before you can use it. Please read the accompanying information carefully first.

1. Don't stare directly into the light or shine directly into the eyes of another person as this may cause temporary loss of vision.
2. Never disassemble the products, as all parts must be factory serviced to insure proper operation.

## ASSEMBLED BRACKET IMAGE

**Figure 1**

Passenger Bracket



## MOUNTING INSTALLATION INSTRUCTION

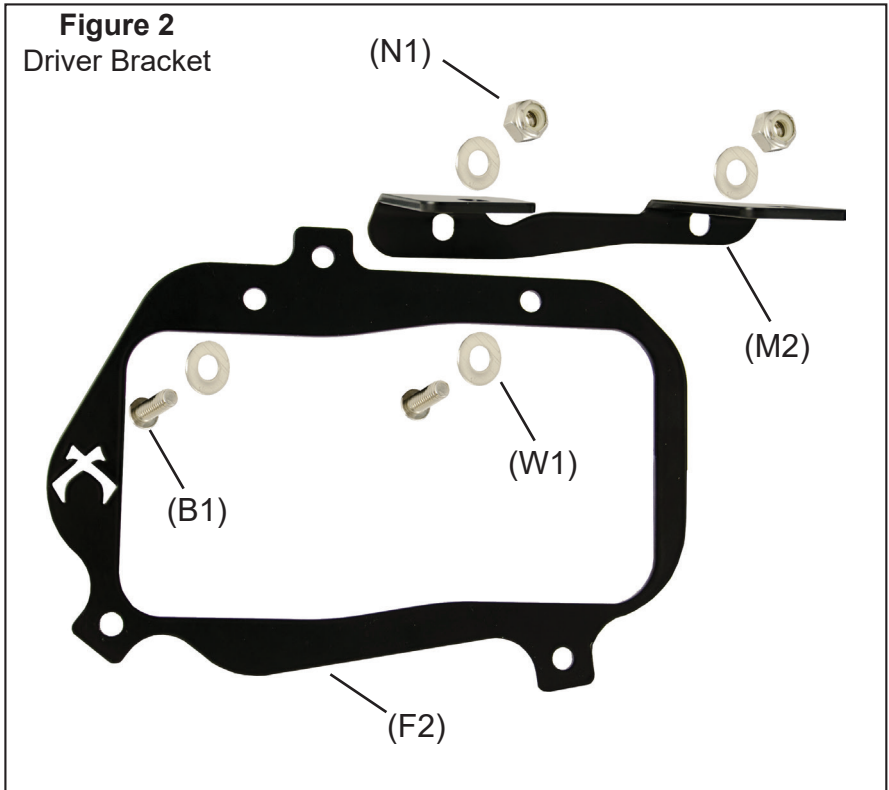
1. Start by removing factory head lights. Save the factory mounting hardware and leave the factory springs in place as they will be used later in the install.
2. Attach the Light Mount Part (M2) to the back of the Face Plate Part (F2) using hardware supplied. See [Figure2].
3. Using the Optimus hardware & Trunnion, loosely attach the Optimus to the Light Mount (M2), as this will allow for further adjusting later in the install.
4. Lights must be wired before kit can be mounted to the vehicle. See wiring installation instructions for further detail.
5. Mount the completed kit with lights to the vehicle using the factory hardware and springs, adjust lights as needed.

**TIP:** Vision X recommends the use of liquid thread-locker, or Loctite, to ensure that every bolt and nut are safely secured.

# RZR LED HEADLIGHT KIT



## MOUNTING BREAK DOWN



**WARNING: Bolts, Nuts, and Washers are Stainless Steel. DO NOT USE Pneumatic or Electric Tools to Tighten and Loosen. The Hardware Will Permanently Lock Together.**

### COMPONENTS KEY 1

- Part (B1) Bracket Bolt
- Part (F2) Face Plate
- Part (M2) Light Mount
- Part (N1) Bracket Nut
- Part (W1) Bracket Washer

**TIP:** For complete application guide see website

## **WIRING INSTALLATION INSTRUCTION**

### **Non Halo See [Figure 3]**

For factory Low/High Beam configuration follow instruction.

1. Plug the Green wired deutsch connector (G1), into your outer Optimus (O1). This is your low beam.
2. Plug the Yellow Wired deutsch connector (Y1), into your inner Optimus (O2) .This is your high beam.
3. Plug the Delphi connector (D1), into your factory harness ensuring they clip in securely.
4. Test lights

## **WIRING INSTALLATION INSTRUCTION**

### **For Halo See [Figure 3 & 4]**

For factory Low/High Beam configuration follow instruction.

1. Follow steps 1 & 2 in the instructions listed above.
2. To connect the Halo wire tap the White wire (H1) to an existing power source, or its own aux switch.
3. Plug the Delphi connector (D1), into your factory harness ensuring they clip in securely.
4. Test lights.

### **DIMMER WIRE See Components Key 2 and [Figure 3&4]**

Your light is capable of dimming through the Prime Drive wire on the light's plug. To achieve this requires our authorized accessories, the XIL-PDIMMER, or XIL-PDIMMERBUTTON.

**Do Not** connect the Prime Drive wire without authorized accessories as this will damage the electronics.

## **COMPONENTS KEY 2**

Part (DD) Deutsch to Delphi

Part (D1) Delphi

Part (D2) Dimmer wire [Authorized accessory required]

Part (D3) Dimmer wire [Authorized accessory required]

Part (O1) Outer Optimus [Low Beam]

Part (O2) Inner Optimus [High Beam]

Part (G1) Green wired Deutsch [Low Beam]

Part (Y1) Yellow wired Deutsch [High Beam]

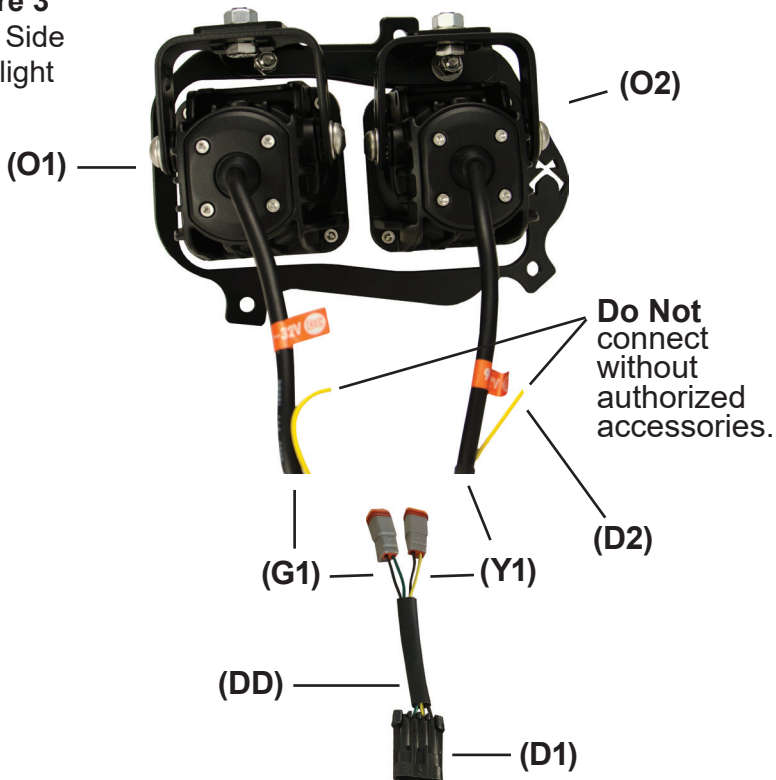
Part (H1) Halo wire

# RZR LED HEADLIGHT KIT



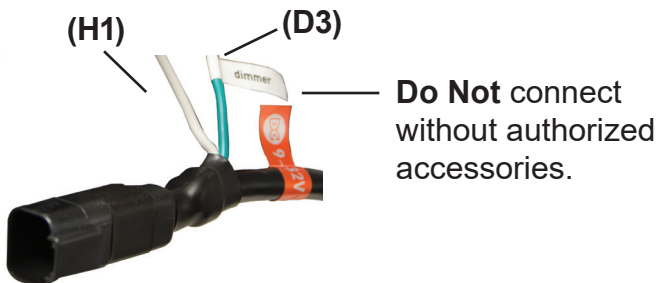
## WIRING DIAGRAM

**Figure 3**  
Driver Side  
Headlight



## HALO WIRING DIAGRAM

**Figure 4**  
Halo Kit



## MANUFACTURER RECOMMENDATION

For those unfamiliar with electrical wiring on vehicles, Vision X recommends that all LED Lighting products are professionally installed.



## You May Also Be Interested In:



**CLAMP TUBE MOUNT**  
*(0.75"-3.0" Diameter Available)*



**SECURITY NUT**  
 Available in multiple sizes



**SECURITY BOLT**  
 Available in multiple sizes



**PRO PODS**  
*Comes in a variety of colors*



Part # - 4009257  
 Item # - XIL-PDIMMER  
 Dial Knob Dimmer to Adjust  
 the Light Output of Prime Drive  
 Anywhere in Between 100% and  
 50%



Part # - 9893365  
 Item # - CTL-CPZ110XPKIT  
 Xtreme performance 40-watt  
 single source LED light.



Part # - 4009264  
 Item # - XIL-PDIMMERBUTTON  
 Push Button Dimmer for Prime  
 Drive to Switch Between 50%  
 and 100%