



CR3 Fog Light Mounting Kit Toyota Tacoma, Tundra, 4Runner

AMNOETOY1CR

Thank you for choosing VISION X

We know you would rather be riding your bike than wrenching on it, so we go the extra mile to make sure our instructions are clear and as easy to understand as possible. If you have any questions, comments, or suggestions don't hesitate to give our gear experts a call at (888) 489-9820 or visit WWW.VISIONXOFFROAD.COM

Please Read Before Installing

VISION X products should always be installed by a qualified technician. If you are unsure of your ability to properly install a product, please have the product installed by your local dealer. VISION X takes no responsibility for damages caused by improper installation. **Caution:** When installing electronics it is extremely important to pay close attention to how wires are routed to ensure the wires will not bind and have enough slack to operate properly.

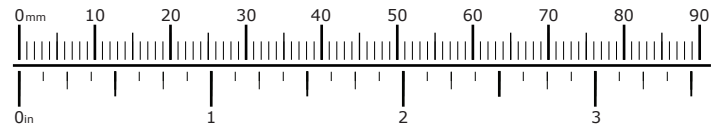
Installation Tips

We strongly recommend using medium strength liquid thread locker on all screws, nuts, and bolts. It is also important to ensure that all hardware is tightened to the proper torque specifications as listed in your owner's manual. For included accessory hardware please refer to the default torque specifications provided below. Inspect all hardware after the first 30 miles to ensure proper torque specifications are maintained.

Bolt Size	in-lbs	ft-lbs	Nm
M3	10.0 in-lbs	-	1.0 Nm
M4	23.0 in-lbs	-	2.5 Nm
M5	44.5 in-lbs	3.5 ft-lbs	5.0 Nm
M6	78.0 in-lbs	6.5 ft-lbs	9.0 Nm
M8	-	13.5 ft-lbs	18.0 Nm
M10	-	30.0 ft-lbs	41.0 Nm
M12	-	52.0 ft-lbs	71.0 Nm

Hardware Sizing Guide

Not sure what size bolt you have? Use this ruler to measure screws, bolts, spacers, etc. Remember, the length of a screw or bolt is measured from the start of the "mounting surface" to the end of the screw, so only include the screw head when measuring countersunk screws.



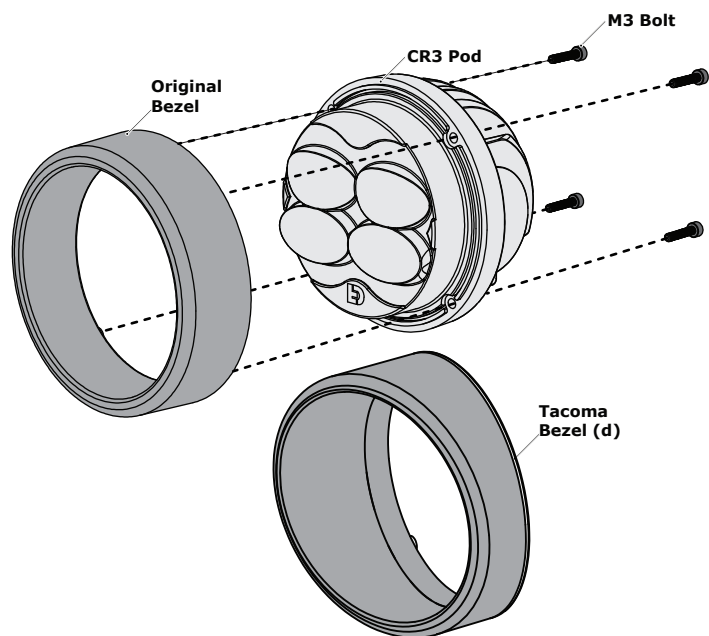
What's In The Box?



Kit Contents

- (a) Right Hand Side Mounting Bracket....(LAH.51.001).....Qty 1
- (b) Left Hand Side Mounting Bracket....(LAH.51.002).....Qty 1
- (c) Adhesive backed Rubber Bumper....(LAH.51.003).....Qty 4

- (d) Type 1 Fog Light Bezel(LAH.51.005).....Qty 2
- (e) H-11 Wiring Adapter....(- P-HARNESS.11D).....Qty 2

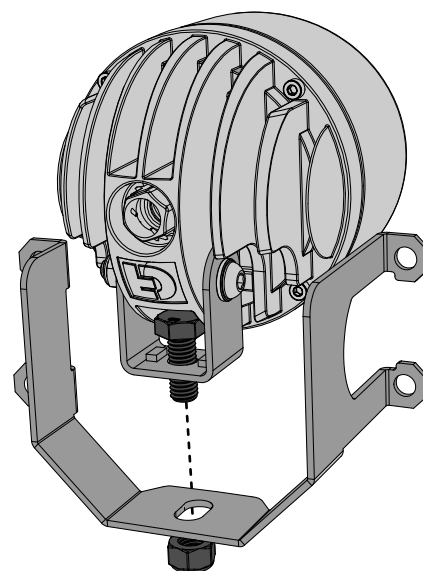


1.1 - Installing The New Bezel

Step One: The original bezel needs to be removed from the CR3 light pods. Use a 2.5mm allen key to remove the four M3 bolts from the back side of the pod, then remove the bezel.

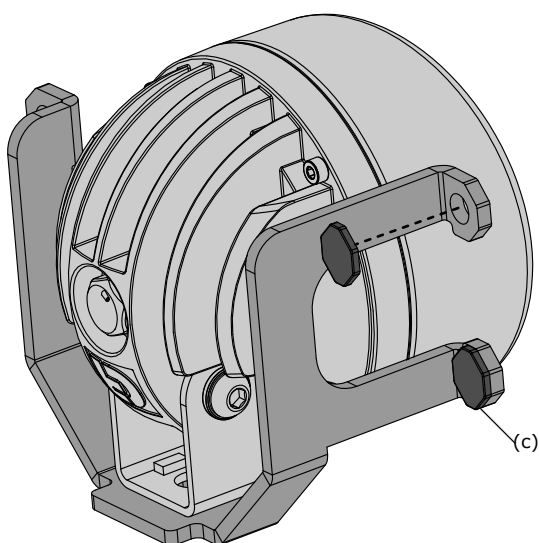
Step Two: Once the original bezel is removed you can install the Type 1 Fog Light Bezel (d) using the same four M3 bolts from the back side of the pod.

Note: When installing the new bezel on the left and right hand side remember to mount it with the taller portion of the edge rotated inwards towards the middle of the truck.



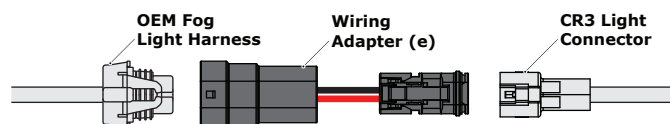
1.2 - Installing The Mounting Bracket

Step Three: Using the M8 hardware from the CR3 Hinge, secure the pod to the mounting slot on the bracket (a,b).



1.3 - Installing The Mounting Bracket

Step Four: After the CR3 is installed onto the bracket the two adhesive back rubber bumpers (c) can be adhered to the back side of tabs that reach farther forward. On the left hand side bracket (b) the bumpers will go on the right side tabs and the reverse on the other bracket.



1.4 - Installing The CR3 Fog Light

Step Five: The OEM fog lights and brackets now need to be removed from the vehicle. The OEM lights can be accessed from the front wheel well, depending on your exact vehicle model, the plastic fender liner may need to be peeled back to access the lights.

Step Six: Once installed, use the provided wiring adapter (e) to connect the CR3 light to the OEM wiring harness.