



# **RAINBOW INFINITY PUZZLE**



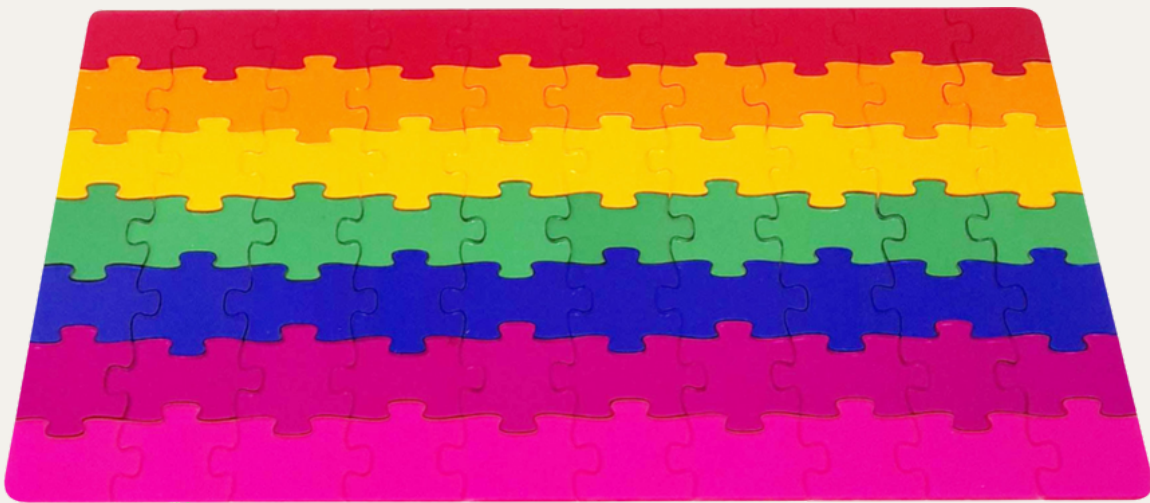
**THE PLAYBOOK**

# Age Appropriate Puzzle

The Rainbow Infinity Puzzle comes with 70 pieces in total, but for toddlers and preschoolers, you may want to limit the number of pieces you offer to them.

As all the pieces are interchangeable, you can "downsize" the puzzle to a size that is more appropriate for your child. The smallest puzzle you can make is 2 x 2 (4 pieces).

Limiting the number of pieces also makes it easier to pack away and reduces risk of losing pieces.



**70 pcs**



**30 pcs**

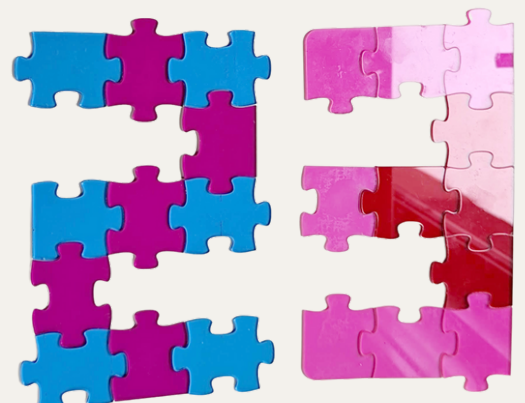
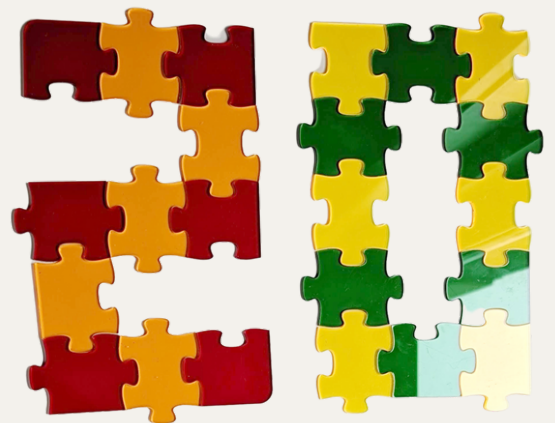
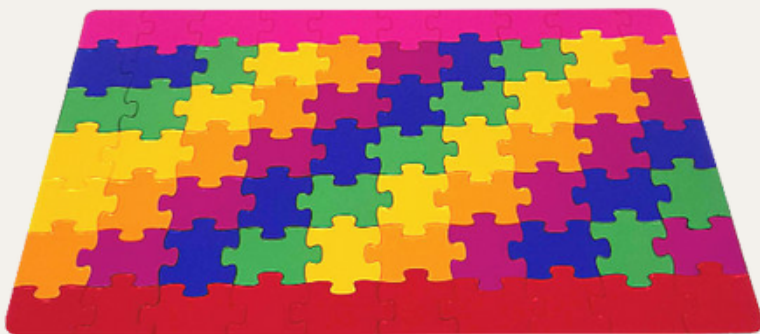
# Pattern Making

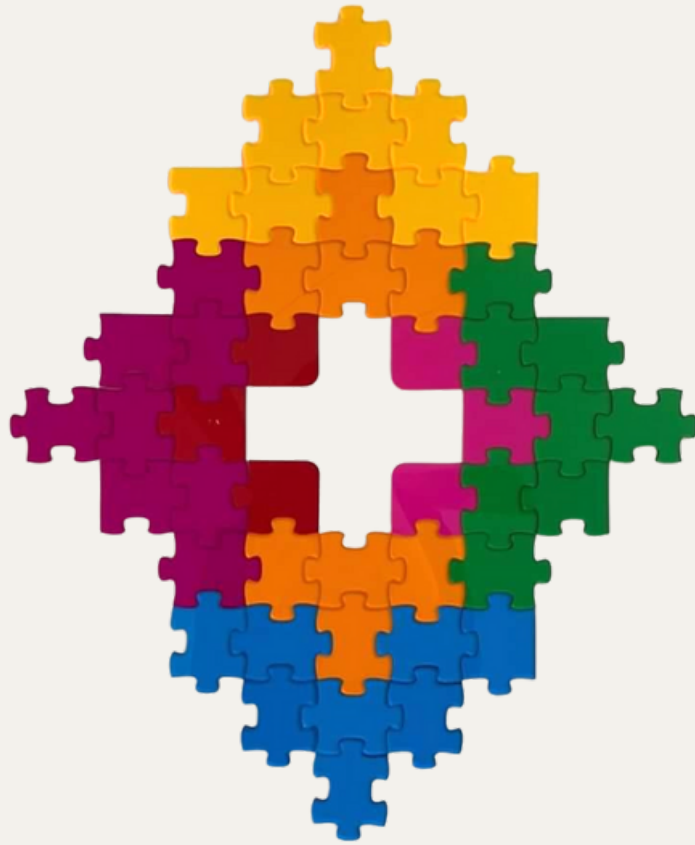
When you first present the puzzle to your kid(s), allow them full freedom to explore. It does not come with instructions or patterns to follow, because the intention is for children to think creatively.

If they are unsure where to start and ask you for help, suggest that they pick out all the straight edge pieces first and challenge them to connect all the straight edges.

Then, fill in the middle empty part with the remaining pieces in whichever colourway they prefer.

Once they are confident in creating their own masterpieces, here are a few patterns that may give them more ideas:





Credit: [@theminimaker.space](#)



Credit: [@baby\\_burrito\\_play](#)



# Light Table

An easy way to make puzzle play more interesting is to set it out on a light table.

For a funky effect, try colour changing lights, or fairy lights!

The Carry-Play **white lids** or **frosted solid inserts** are both great options as a light surface.



Credit: [@mr.phoenix.james](#)

Credit: [@little.chief.plays](#)



# Puzzle Rescue

What's more fun than treasure hunting? Make the kids look for the puzzle pieces in jelly (gelatin), soapy water, sand, or play dough - and as an activity extension, set out a few cups for colour sorting, or they can simply complete the puzzle if they like.



Credit: [@popandpudplay](#)



Credit: [@homewithharlow](#)



Credit: [@mumzlife](#)



Credit: [@kingdomplayroom](#)



# Early Numeracy & Literacy

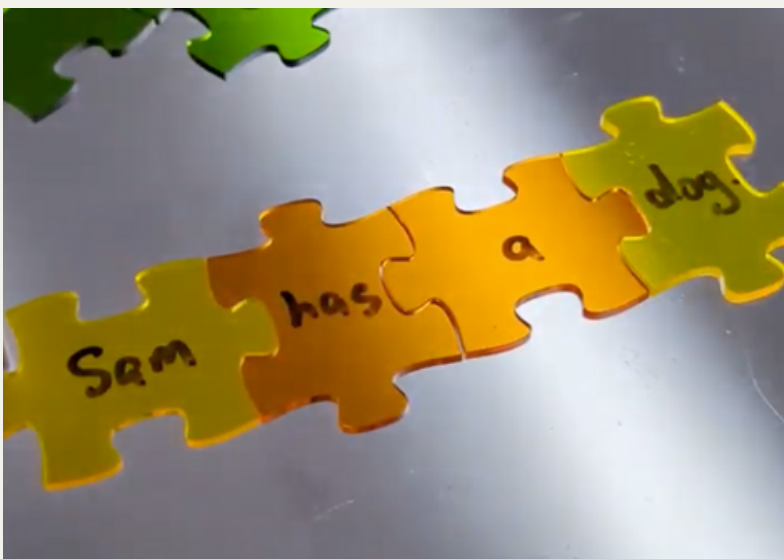
For preschool or first year of school, you can practise letter and number recognition by writing on the puzzle pieces with any non-permanent marker like dry erase or chalk markers.



For more advanced learning, you can highlight specific phonic sounds using certain colour puzzle pieces, e.g yellow pieces of vowels.



Once they start being able to read simple words, use the puzzle pieces to play games like unscrambling a sentence.



You can also use specific colours to deconstruct a sentence structure and get them to identify what the colours represent, e.g yellow pieces for nouns.



# Geometric Expansion Pack

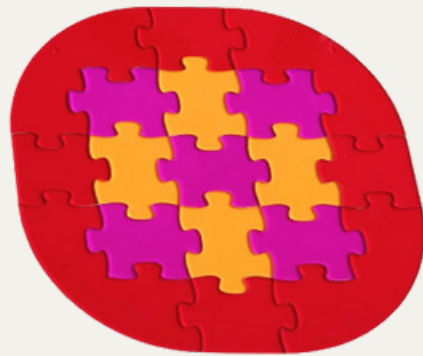
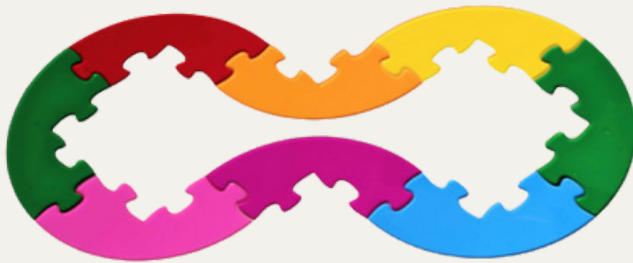
The new Geometric Expansion Pack allows you to create even more complex shapes. Here are a few things you can make with the Circle Pack and Triangle Pack.



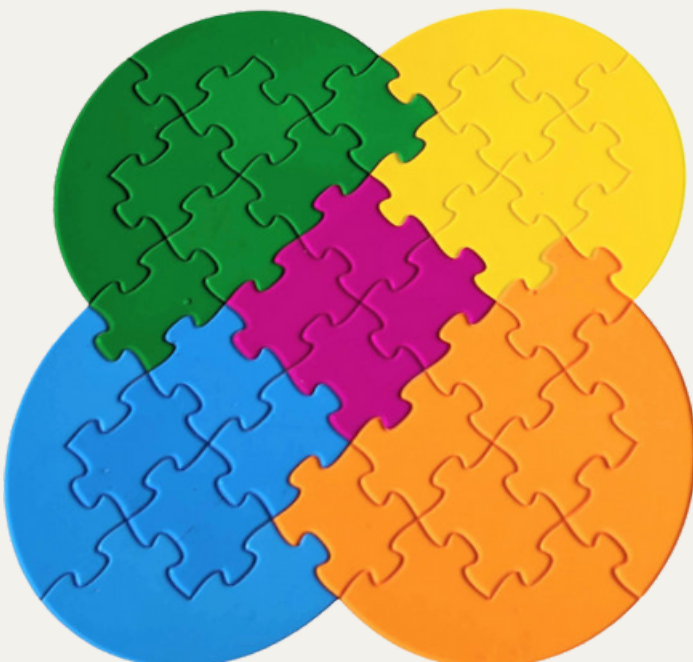
FRACTIONS



RACE TRACK

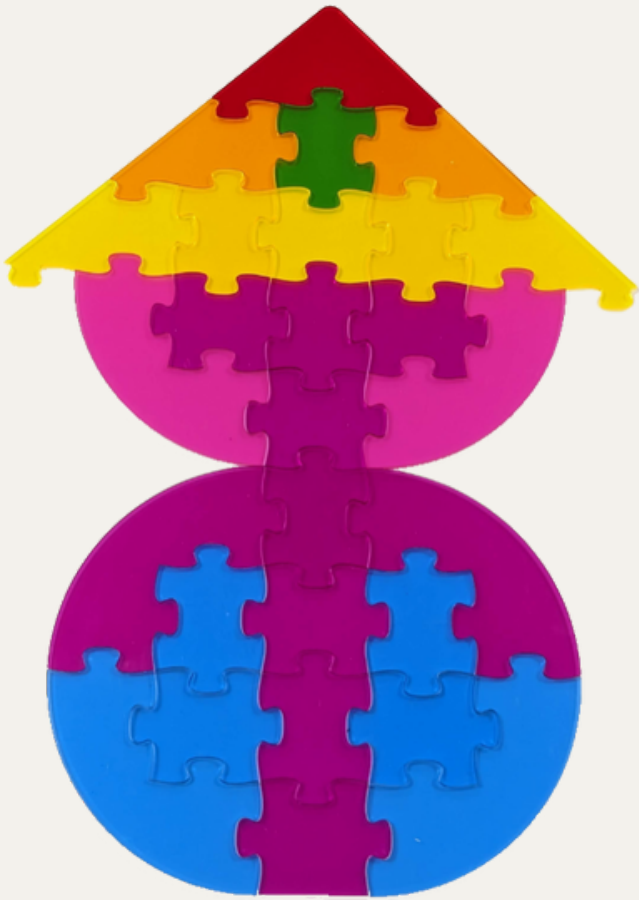


OVALS

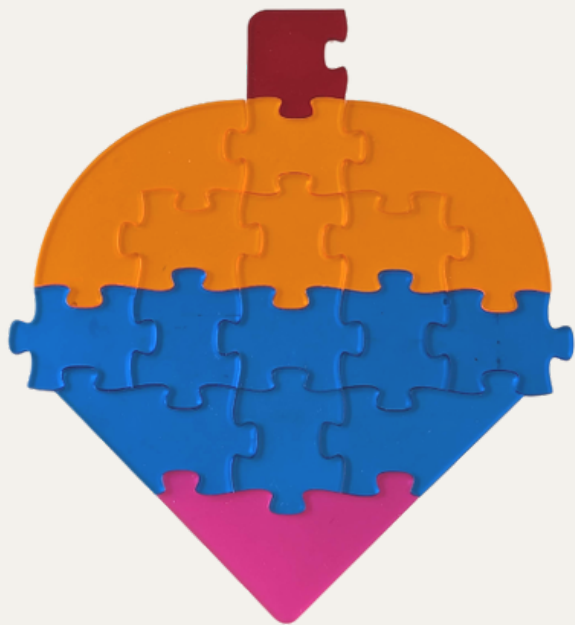


FLOWER

SNOW MAN



HOUSE



ICE CREAM



PALM TREE