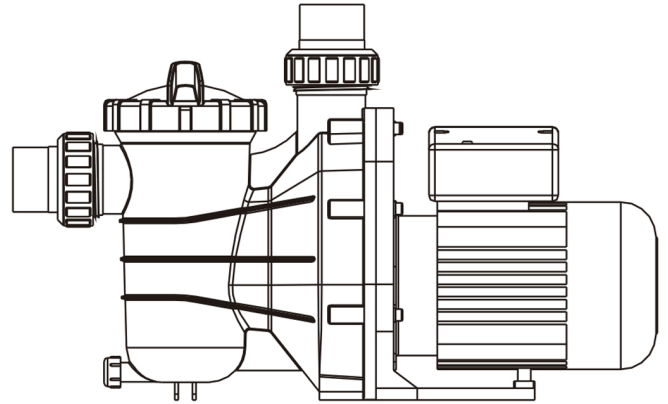
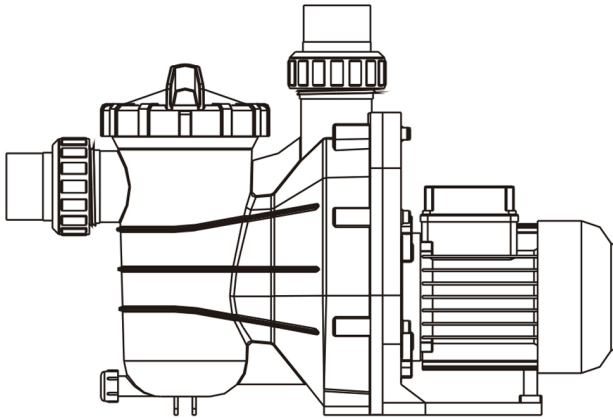




ABG Series Pool Pump Installation & Operating Instructions



INSTALLATION

Only qualified persons should install this pump

IMPORTANT ELECTRICAL

Electrical Contractors please Note: **FIBROPOOL Pumps** must be plugged into a dedicated, GFCI protected circuit.

Pump Must Be:

- ◆ Level and on a solid base, such as a block, to keep the accumulated rain water from flooding the motor.
- ◆ Use the shortest available pipe/ hose.
- ◆ Install gate valve in front of the pump.
- ◆ Be protected from excess moisture.
- ◆ Have at least 12 inches all around for ventilation.
- ◆ Pump must be installed at a level LOWER than the pool water.

NOTICE:

Pump suction and discharge connections have moulded in thread stops, **Do not** try to screw pipe in beyond these stops.



OPERATION

CAUTION



**Hazardous suction.
Can trap hair or body
part, causing severe
injury or death. Do not
block suction.**

⚠ **NEVER** run pump dry! Running pump dry may damage seals, causing leakage and flooding! Fill pump with water before starting motor.

⚠ **Before removing lid:**

STOP PUMP before proceeding.

CLOSE the SUCTION side GATE VALVE and the filter valve.

RELEASE ALL PRESSURE from pump and piping system NEVER tighten or loosen screws while pump is operation.

⚠ Do not block pump suction! To do so with body may cause severe or fatal injury. Children using pool must **ALWAYS** have close adult Supervision!

1) Priming Pump:

- Release all air from filter and piping system: see filter owner manual.
- In a flooded suction system (water source higher than pump), pump will prime itself when suction and discharge valves are opened.
- Clean and inspect the O Ring; grease it 3-4 times per year
- Replace trap cover on trap; turn clockwise to tighten cover.

2) NOTICE: Tighten trap cover by hand only.

Pump should prime now. Priming time will depend on vertical length of suction lift and horizontal length of suction piping.

ROUTINE MAINTENANCE

There are 2 routine maintenance needed for your Fibropool® ABG Pump.

**** Clean the basket.** Debris or trash that collects in basket, will choke off water flow through the pump. Follow instructions below to clean trap:

- 1) Stop pump, close gate valve in suction and discharge, and release all pressure from system before proceeding.
- 2) Unscrew trap lid (turn counterclockwise).
- 3) Remove strainer basket and clean. Be sure all holes in basket are clear, flush basket with water and replace in trap with large opening at pipe connection port (between ribs provided). If basket is replaced backwards cover will not fit on trap body.

****Clean and inspect lid O Ring;**

Clean O Ring groove on trap body and Grease it with some silicone/ teflon based grease. Replace lid. To help keep lid from sticking, tighten hand tight only.



SERVICE & REPAIR PARTS

Refer all service inquiries to FIBROPOOL CO LLC Fibropool is an American Company, based in USA .
Your pump is assembled in the State of Mississippi, USA, from domestic and foreign components

You can Contact us via email: support@fibropool.com, or via our web service at www.fibropool.com or call us at (228) 313 7874

TROUBLE SHOOTING

LOW PUMP OUTPUT

- 1) Valve in suction or discharge line partly closed
- 2) Suction or discharge line partly plugged or too small
- 3) Clogged/ dirty pump basket or impeller
- 4) Clogged/ dirty pool filter
- 5) Clogged impeller

HIGH PUMP PRESSURE

- 1) Discharge valve or inlet fittings closed too much
- 2) Return lines too small
- 3) Dirty filters

NOISY PUMP AND MOTOR

- 1) Clogged skimmer basket or pump basket.
- 2) Worn motor bearings
- 3) Suction side Valve is closed
- 4) Suction line partly plugged
- 5) Vacuum hose plugged or too small

AIR BUBBLES IN THE PUMP BASKET

- 1) Suction side air leak, in the fittings or valve.
- 2) Pump lid O ring needs to be cleaned/ greased
- 3) Low water level in pool

MOTOR DOES NOT START

- 1) Unplug and plug the pump
- 2) Fuses blown or thermal overload open
- 3) Locked motor shaft
- 4) Motor windings burned out
- 5) Defective starting switch inside singl phase motor
- 6) Pump Starting Capacitor is burnt
- 7) Low voltage
- 8) Pump impeller is jammed with debris/ rock/sand

PUMP DOES NOT REACH FULL SPEED

- 1) Starting Capacitor is burnt
- 2) Electric supply is below 112 volts

MOTOR OVERHEATS (protector trips)

- 1) Electrical supply voltage is too low (ideal 112-120volts)
- 2) Motor windings are worn out
- 3) Pump impeller is blocked

PUMP DELIVERS NO WATER

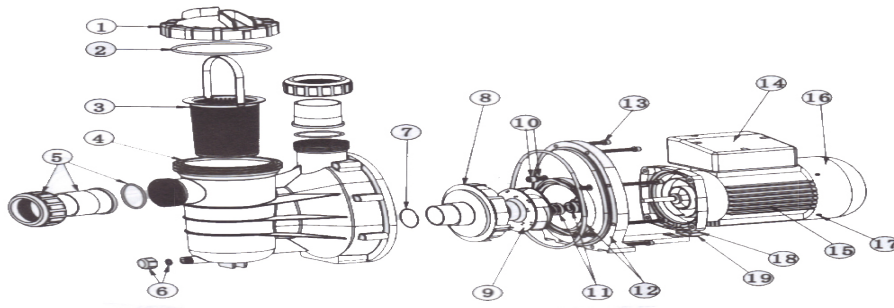
Pump is not primed

- 1) Closed valve in suction or discharge line
- 2) Leakage or air into suction system
- 3) Impeller clogged

• LEAKAGE OF WATER AT SHAFT

- 1) Shaft seal requires replacement

NOTE: If the recommendations in the trouble shooting portion of this manual do not solve your particular problem(s), please contact Fibropool®



1	Lid Assembly	1	ABG 004
2	Lid Oring	1	ABG 014
3	Basket	1	ABG 003
4	Pump Body	1	ABG 001
5A	Union Core	1	ABG 005
5B	Union Nut	1	ABG 007
5C	Union O ring	1	ABG 016
6A	Drain Cap	1	ABG 018
6B	Drain Cap Gasket	1	ABG 017
7	Diffuser O ring	1	ABG 015
8	Diffuser	1	ABG 006
9A	Impeller 0.33 HP	1	ABG 008
9B	Impeller 0.50 HP	1	ABG 009
9C	Impeller 0.75 HP	1	ABG 010
9D	Impeller 1.0 HP	1	ABG 011
10	Body Screw	4	ABG 020
10A	Body Screw Gasket	4	ABG 021
11	Shaft Seal	1	ABG 012
12 A	Body Flange Plate	1	ABG 002
12 B	Body Flange Plate O ring	1	ABG 013
13	Hex Screw	8	ABG 019
14A	Motor Capacitor 0.33 HP	1	ABG 023
14B	Motor Capacitor 0.50 HP	1	ABG 025
14C	Motor Capacitor 0.75 HP	1	ABG 027
14D	Motor Capacitor 1.0 HP	1	ABG 029
	Motor 0.33 HP	1	ABGM 033
	Motor 0.50 HP	1	ABGM 050
	Motor 0.75 HP	1	ABGM 075
	Motor 1.0 HP	1	ABGM 100