

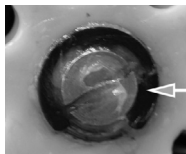
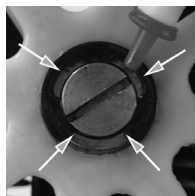
Get the Longest Life from your New Parts

Use only authentic Inland replacement parts, including replacement Diamond Blades.

We test all of our blades on a precision machined Go/No Go gauge to ensure proper sizing of every Inland blade. Knock-off blades out there are not manufactured to our tight tolerances. Using non-Inland blades can cause unwanted stresses and strains on the entire Upper Wheel Assembly that undermine part performance and life.

Oil and Seal the Upper Drive Wheel Needle Bearing about every 10 hours of running time.

Empty the coolant reservoir then open the front door. Tilt the saw backward at a 45° angle. Place 4 to 6 drops of general purpose oil (*not* WD-40™) evenly around and making sure to get into the space around the bearing center.



Then for additional protection, especially on DFS-ReefKeeper™ saws, apply a generous smear of petroleum jelly so that it completely covers over the screw and C-clip.

For DFS-100 ReefKeeper Saws

Use clean RO/DI water in the saw for coolant and use clean fresh water on your saw for clean up.

Corrosion brought on by salt is the #1 threat to your band saw. The amount of water present and the amount of time that it is in contact with the coral will not harm the animal. In fact, casual evidence suggests that fresh water may even be an advantage as it will help osmotically to destroy bacteria and other microorganisms.

Blade Tracking and Wheel Position

The original wheels were factory aligned and tracking checked before shipment. After installing replacement parts, if you find adjustment is necessary know that the blade position is controlled by small, incremental adjustments to the upper wheel tilt. Watch how to at www.youtube.com/watch?v=OJrPra0xVxY

Blade is walking off front of the upper wheel: Tilt the top of the upper wheel backward by turning the nylon tilt adjustment screw right (clockwise). Do a 1/2 turn adjustment then test by hand turning the lower wheel. Repeat until the blade stays in the correct position.

Blade is walking to the back of the upper wheel: Tilt the top of the upper wheel forward by turning tilt adjustment screw left (counter-clockwise). Do a 1/2 turn adjustment then test by hand turning the lower wheel. Repeat until the blade stays in the correct position.

Blade is walking off the lower wheel: The lower wheel should be 1/2" from the inside of the frame. To adjust, insert the 5/64" long arm Allen wrench through the access hole located on the lower left side of the frame. Loosen the set screw on the brass wheel arbor. Correct the position using a ruler and retighten the set screw.

Questions?

Most questions about your machine can be answered by:

- Visiting the Inland Craft web site at www.inlandcraft.com
- Watching our [ICPVids](#) YouTube channel
- By emailing Customer Service at helpdesk@inlandcraft.com
- By calling Inland Customer Service at 1-800-521-8428