

Water Lily

Horizontal Peyote Project

Project Design and Sample by Alley Mori
Handout by Alley Mori



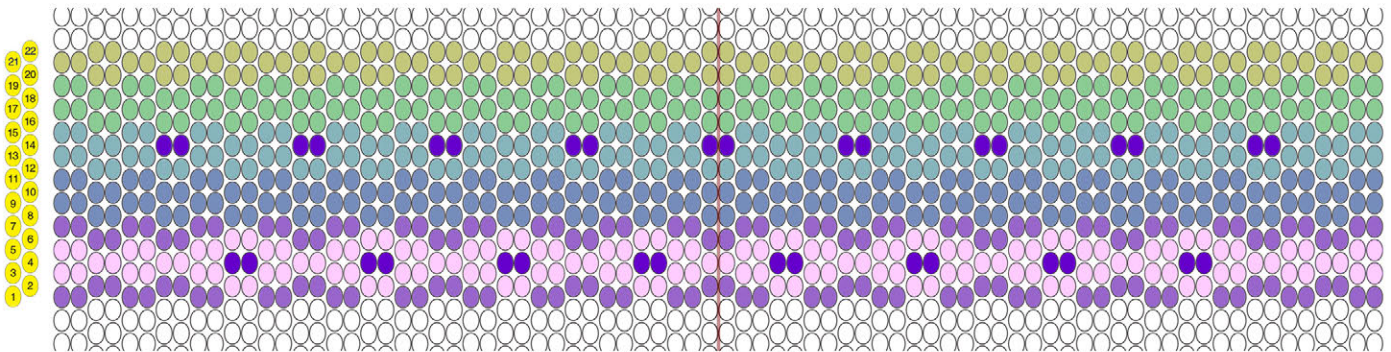
Water Lily

Ingredients:

- 1 Tube July Monthly Mix, Lakeside
- 1 Strand 4mm Fire Polish, Nebula Chalk
- 1 Flower Button, Antique Silver
- 1 Spool French Lilac Regular C-Lon
- 1 Small Scrap 2mm Distressed Gray Leather
- 1 Tube GS Hypo Cement
- 1 Spool Beading Thread, Hana or KO
- Size 10 Beading Needles

Additional Learning:

- Peyote Stitch Bracelets
- Odd Count Peyote
- How to Macramé
- Beadshop LIVE Horizontal Peyote

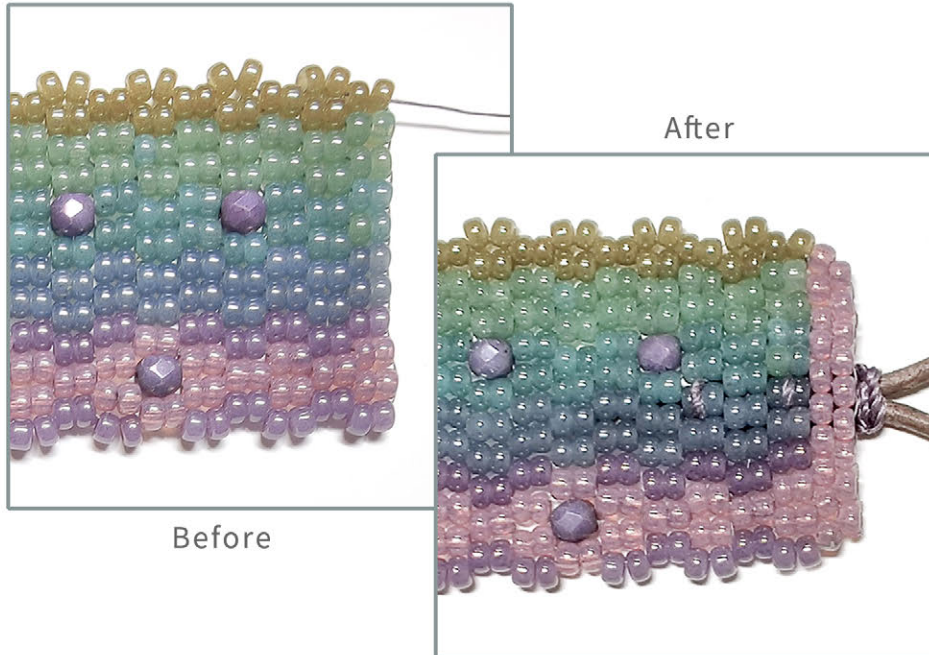


- 8-2373 - Thistle
- 8-2377 - Lavender
- 8-2378 - Slate
- 8-2376 - Eucalyptus
- 8-2375 - Sage
- 8-2374 - Celery
- 4mm Fire Polish, Nebula Chalk

Notes:

Finishing Touches:

Add brick stitch to the ends of the cuff for a polished look. I added 2 rows to each end.



Stitch the button in place with your beading thread by weaving back and forth from front to back until it is securely attached.

To make the button loop, macramé the ends of leather together with C-Lon making sure the loop fits over the button. As you make your knots, add a few drops of GS Hypo Cement on top of the leather so that the leather and C-Lon become fused together. I also attached the loop to the cuff at the same time I created the macramé knots by passing the tails of C-Lon to the back side, cross over, and then bring back up to the front. I did this twice to secure the loop to the cuff.

Measurements/Sizing

If you follow the pattern chart, add the brick stitch to the ends, and place the button/loop closure as shown, you will end up with a 7 inch cuff.

Adjust the size up or down by adding or subtracting beads to each end of the pattern chart.

** A 7 inch bracelet uses most of the tube of 8/0s. You may need to purchase additional beads if your piece is substantially longer. **

