

Earring Components Galore

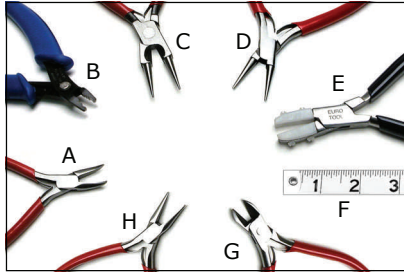


Skill Level: Intermediate
Project time: 3 hours

Dramatic chandelier earrings are all the rage. Learn how to create fabulous and unique components using wire and chain. The skills you gain in this class will inspire you to create other trend setting jewelry.

EARRING COMPONENTS GALORE RECIPE

Common Ingredients for Earring Components



TOOLS NEEDED

- A. Bent-nose chain pliers
- B. Crimping pliers
- C. Rosary pliers or
- D. Round-nose pliers
- E. Wire Straightener
- F. Ruler
- G. Wire Cutter
- H. Needle-nose chain pliers

INSTRUCTIONS INCLUDE

Part A

Constructing the Skeleton

Part B

Creating the Hanging Portion

Part C

Adding More Beads

Part D

Technique Reviews

- A. Making a Rosary Loop
- B. Making a Wire-wrapped Loop
- C. Wire-wrapping a Briolette



An assortment of beads.



A variety of thin gauge chain.

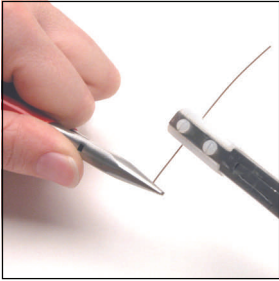


20–26 gauge sterling silver or gold-filled wire.



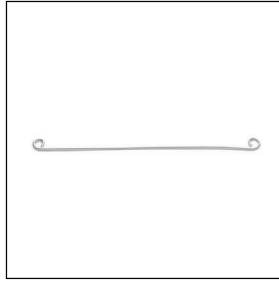
Spacer bars, ear wires, etc. Anything you want!

Part A. Constructing the Skeleton



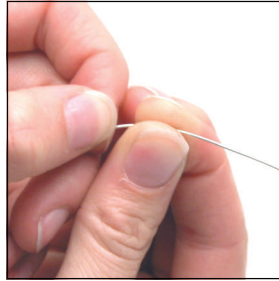
Step 1

Cut 3" of 20 or 22-gauge wire, depending on how wide of a skeleton you want. Tip: Straighten the wire to harden it and help maintain the shape.



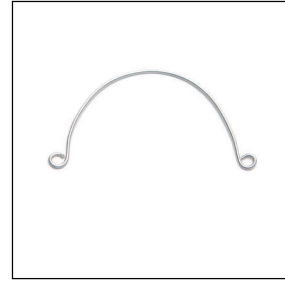
Step 2

Make rosary loops on each end. Make sure they are both curved to the same side of the wire. See Part D for a rosary loop technique review.



Step 3

Shape wire into a curve using your fingers.



Tip:

Keep in mind that in order to balance the finished earring, the wire skeleton should be symmetrical.

Part B. Creating the Hanging Portion



Tip:

You have several options for hanging beads

1. Beads on Soft Flex
2. Beads on wire
3. Chain (shown here)



Tip:

You can attach the earwire with a simple wire-wrap. OR, you can add a length of chain to the bottom of the wire-wrap for later dangle another bead.

Step 1

You can attach chain either directly in the rosary loops by opening loops, or connect them using wire-wraps and beads as shown here.

Step 2

Attach ear wire to skeleton next. Now you can try the earring on you to check for balance.

Part C. Adding More Beads



Finally

add beads to the skeleton and chain to embellish your earring.



Tip:

Make sure heavy beads are balanced on the chain, or your earring will hang crooked.

Finished Earring



Other Design Ideas



LEARNING TO MAKE ROSARY LOOP



Example of rosary loop bead units.



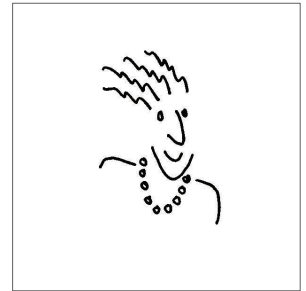
Detail of one rosary loop connected to another.

To practice this link, you will need:

- Needle-nose chain pliers
- round-nose pliers or rosary pliers
- wire cutter

For supplies gather:

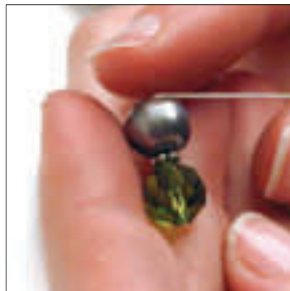
- 1 2" head pin
- 2 1" eye pins
- 1 4mm spacer bead
- 4 8mm beads



Helpful Hint: To make your loops consistent in size, continue to work on the same spot on your rosary plier tips.



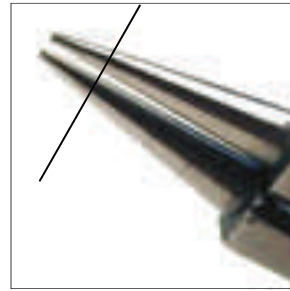
Step 1
Slide beads onto a head or eye pin.



Step 2
Using your finger, bend the wire at a right angle on top of the bead.



Step 3
Using the cutter portion of the rosary pliers, remove excess wire leaving about 3/8".



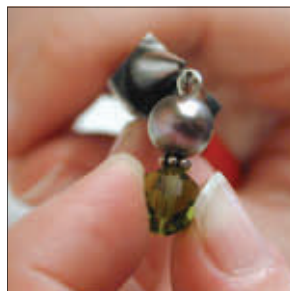
Step 4
Find the place on your plier tips that are approximately 1/4" from the end.



Step 5
Using your rosary pliers, approximately 1/4" from the tip, grab the very end of the wire.



Step 6
a) Using your wrist, curl the wire towards yourself.
b) Slide the pliers back into their original position.
c) Curl the wire again.



Step 7
Continue to curl until the wire forms a complete circle.



Step 8
Double check to make sure the rosary loop is closed.



Step 9
To open or close a rosary loop, lift the loop out of its plane. Do not pull the loop open sideways or you will distort its round shape.



Step 10
Insert other rosary loop (or ear wire). Close the loop using your needle-nose chain pliers. Make sure the tip of the wire fits snugly against the bead to form a secure loop.

LEARNING TO MAKE A WIRE-WRAPPED LOOP



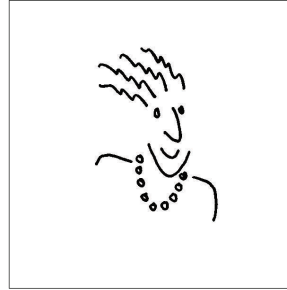
Example of a wire-wrapped loop with two beads and a spacer.

To practice this link, you will need:

- Bent-nose chain pliers
- Needle-nose chain pliers
- Round-nose pliers or rosary pliers
- wire cutter

For supplies gather:

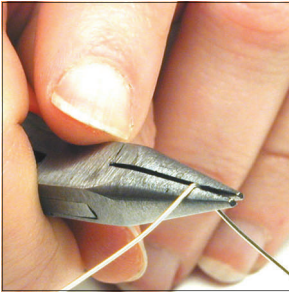
- 5" 24 gauge round wire
- 2 small spacer beads
- 4 8mm beads



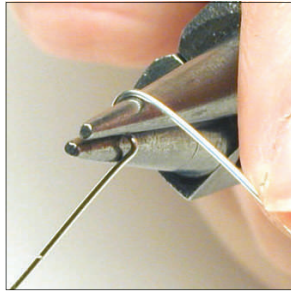
Imagine that the wire-wrapped loop is the head of a little person like me, and the wrap is the scarf.



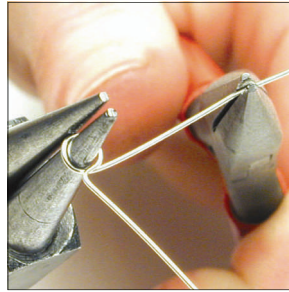
The head and scarf sit on the shoulders of the bead. The first thing you have to do is form my head!



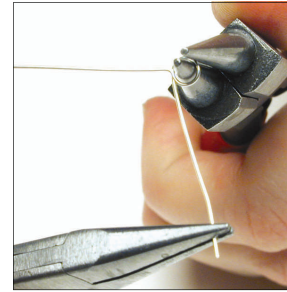
- Step 1**
- a) Holding the needle-nose chain pliers grab the wire about one inch from the end.
 - b) Using your finger, bend the short end of the wire at a right angle.
 - c) Switch to rosary pliers.



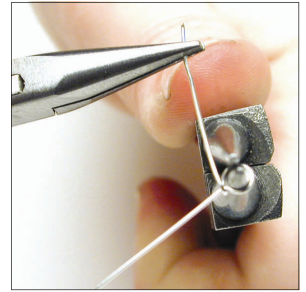
- Step 2**
- a) Place the tips of the rosary pliers above and below the short wire at the right angle.
 - b) Use your finger to begin pushing the short end of the wire over the top plier cone.



- Step 3**
- a) Switch the rosary pliers to your non-dominant hand.
 - b) Use the needle-nose chain pliers to complete the round loop.



- Step 4**
- a) Center the loop on top of the long wire.



- Step 5**
- a) Starting at the base of the loop, begin wrapping the short wire around the long wire.
 - b) Complete three full turns of the wire.



- Step 6**
- a) Using the wire cutters, clip off excess wire.
 - b) Using the bent-nose chain pliers, press down the end of the wire so it isn't sharp.



- Step 7**
- a) Slide beads onto the wire.



- Step 8**
- a) Use the tip of the needle-nose chain pliers to grab the wire against the bead.
 - b) Use your finger to push the wire into a right angle.
 - c) Switch to rosary pliers.
 - d) Repeat steps 2-4 to complete loop.



- Step 9**
- a) To link units together, slide one loop into the other.

Don't forget to link wire wraps together before completing the second wire-wrap.



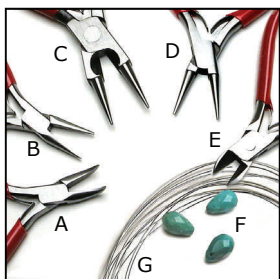
- Step 10**
- a) Hold the loops steady with the needle-nose chain pliers.
 - b) Starting at the bottom of the loop, begin wrapping the short wire around the long wire.
 - c) Continue wrapping until you've reached the bead.

How to Wire-Wrap a Briolette

WHAT IS A BRIOLETTE?



A briolette (bree-oh-let) is any gemstone drop that is an oval or pear shaped cut with triangular facets covering its entire surface. Here at The Bead Shop, our favorite way to "capture" a briolette is to use the triangular wire-wrap method described on this page.



TOOLS NEEDED

- A. Bent-nose chain pliers
- B. Needle-nose chain pliers
- C. Rosary pliers or
- D. Round-nose pliers
- E. Wire Cutters

MATERIALS NEEDED

- E. An assortment of briolettes
- F. Several feet of 24-gauge wire*

***Note:** The example shown uses 24-gauge wire, but the same technique can be used for different gauges of wire. The gauge of wire you use will vary depending on the beads you are wire-wrapping. For tips on choosing the correct gauge of wire for your project, visit our website at www.beadshop.com/chooscorwirf.html



Step 1

- a) Cut 4 inches of 24-gauge wire.
- b) String and center a briolette on the wire.



Step 2

- a) Pinch both wires at the top of the briolette to form the shape of a triangle.



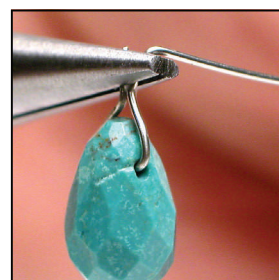
Step 3

- a) Confirm that the briolette is centered inside the triangle.



Step 4

- a) Cut one wire 1/8" from the top of the wire triangle.



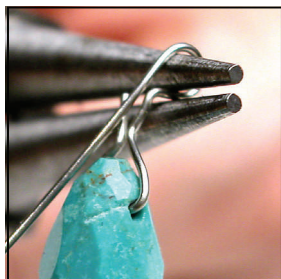
Step 5

- a) Using the needle-nose chain pliers, grab both wires above the triangle.
- b) Bend the longer wire into a right angle.



Step 6

- a) Switch to a round-nose pliers.
- b) Place the tips of the round-nose pliers above and below the longer wire at the right angle.



Step 7

- a) Bring the end of the longer wire up and over the plier to form a loop.

Helpful Hint



To avoid forming a loop over both of the plier cones, rotate your plier a quarter turn and continue to pull the wire all the way around to form the circle.



Step 8

- a) Center the loop above the briolette.



Step 9

- a) Starting at the base of the loop, begin wrapping the longer wire in the space between the loop and the top of the triangle.



Step 10

- a) Using the wire cutters, clip off the excess wire.
- b) Using the bent-nose chain pliers, press down the end of the wire so the sharp end is not exposed.