



Attaching a Wire Embellished Tassel To a Semi Precious Component.

This technique can be used in a variety of ways. This embellished component is perfect for ending a Mala or as a pendant on a strand of beads. Wrap a pair and add jump rings and ear wires to make a statement earring.

Ingredients:

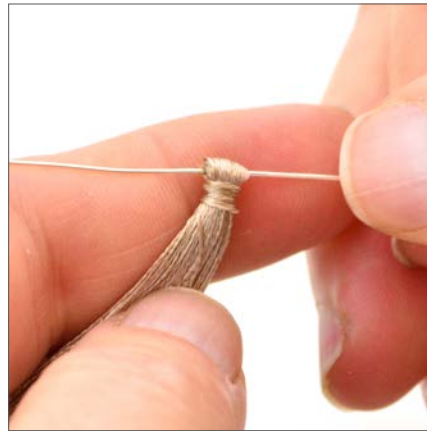
- 1 Spool 26g Silver Tone Craft Wire
- 1 Grey Tassel
- 1 Square Connector- Grey Agate

Tools:

- 1 Pair Round Nose Pliers
- 1 Pair Chain Nose Pliers
- 1 Pair Eurotool Flush Cutters



Step 1.
Cut 12" wire. 26G was used in the sample but you may use 24-28G wire for this technique. Poke the end of the wire under the loop of the tassel and carefully slide the tassel off of the cord and onto the wire. Optional: Add a drop of Hypo Cement glue to the knot holding the tassel together. It will be hidden later by the wire wrap.



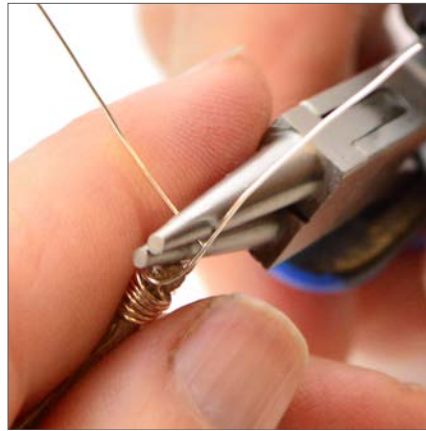
Step 2.
Slide the tassel to the center of the wire. Bend one of the tails down and grip the top of the tassel using needle nose pliers, keeping the bent wire free below the pliers.



Step 3.
Use this wire to wrap around the tassel. Start at the top, just underneath the pliers and make about 5 wraps tightly and evenly over the string that holds the tassel together. When finished, wrap wire back up covering the initial wrap. Use chain nose pliers to tighten any wraps if needed.



Step 4.
Bring this tail up so it sits against the opposite piece of wire and pinch both together with the tip of the chain nose pliers so they come together just above the top of the tassel.

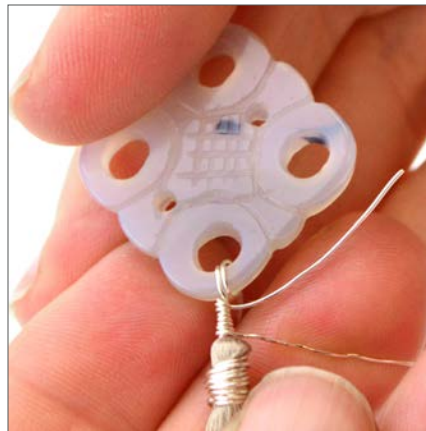


Step 5.

Bend the long wire at a right angle over the pliers to create a bend. Switch to the round nose pliers and with the heads sitting one on top of the other, grip the wire next to the bend and bring the wire up and over the top of the pliers.



Step 6. Remove pliers and insert the wire through one of the large holes in the component. To make a double loop (if desired) bring the wire back through the large hole.



Step 7. Use this wire to wrap around the two wires in the space between the bottom of the loop and the tassel top. Make even and tight wraps starting below the loop and ending at the tassel top. Clip excess wire away using wire cutters and tuck ends in using chain nose pliers. Your component is now ready to add to your project.