

# Poetry, a Macramé Project



by Janice Parsons

Simple is sometimes just perfect. Poetry is a wrap design that uses macramé techniques and beads sparingly but with it can come a rhythm that may feel poetic. We hope you enjoy learning with us and that this adventure into macramé is just the beginning! Happy beading ~janice



Poetry in Pink

Sample by Sarah Grover



Poetry in Grey

Sample by Karen Marshall

Whether you are inspired by one of our kits or decide to use your own beads, the techniques are the same. Here are the ingredients for each design. You will have some leftover beads from the kit. If you have a limited amount of one style of bead, we suggest you lay out a general pattern to ensure you don't run out early of that one bead style, but please...don't do too much pre-planning. The poetry is in the making!



### *Poetry in Pearls:*

- 1 Strand 4.5-5mm Freshwater Pearls
- 1 Button Pearl
- 1 Made with Love Charm (and jump ring)
- 1 Spool Burgundy Tuff Cord #1
- 1 Package Flexible Eye Needles

### *Poetry in Pink:*

- 1 Strand 4mm Devotion
- 1 Strand 6mm Devotion
- 30 or so 4mm Faceted Round Rose Quartz Beads\*
- 1 Button Pearl
- 1 Made with Love Charm (and jump ring)
- 1 Spool Rose Tuff Cord #1



### *Poetry in Grey:*

- 1 Strand 4mm Second Wind
- 1 Strand 6mm Kalahari
- 35 or so 4mm Chinese Crystal Cadet Glaze\*
- 1 Button Pearl
- 1 Made with Love Charm (and jump ring)
- 1 Spool Hematite Tuff Cord #1
- 1 Package Flexible Eye Needles

\* We are in the process of sourcing a replacement for this for future kits and for those who want to purchase separately.

## Studio Essentials:

GS Hypo-tube Cement

Ultra Thread Zap

Design board (and insert) or Macramé Board

Flush Cutters and Chain Nose Pliers

Tape Measure or Handy Tape

Scrap Cord

4 Binder Clips

Scratch Paper and Pen



Whether you use a design tray or a macramé board, you need a surface you can secure your project to so that you can macramé successfully. Everyone finds their favorite surface. One of my first video projects was done with a large baking sheet. It worked!

## About the Length...

Loosely measure your wrist. You can do this with your string and then see what the length is against handy tape measure or tape measure. The button and the loop will add about 1.5 inches (more or less) to the length, so factor that in. Both Pearls and Grey are 6 wrap designs. Pink is a 7 wrap because Sarah used primarily 4mm beads, it was looking skimpy as a 6 wrap. Whatever you decide, measure as you go.

If you're making Poetry as a gift, the average size for a woman's wrist is 6-1/2 to 7 inches. Take your wrist size, multiply it by the number of wraps and that equals your total length.

## Project Maps:

Pearls was done on Burgundy Tuff Cord #1. It would look equally wonderful on another color. This is a 6 wrap bracelet. The total measurement for this bracelet is 40 inches. Length includes the button and loop added in.

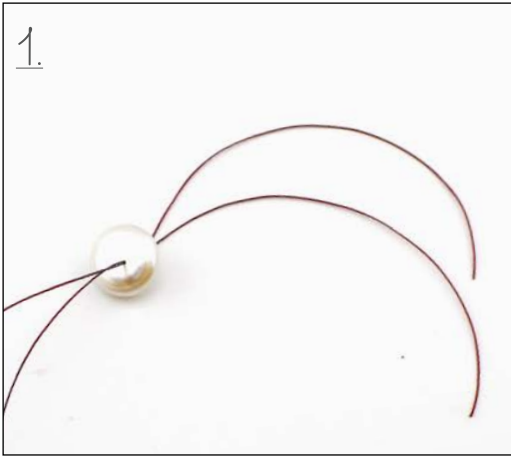


Grey is a full range of colors in the blue-grey palette, with Botswana Agate being the main inspiration. The spacing is random and that's what makes it so artisan.



Pink was created with 3 different rose quartz beads. The spacing is random and quite long in places between beads. Sarah made it a 7 wrap to make it more luscious. The total length is 46.5 inches.





1. Measure and cut two lengths of Tuff Cord 3 yards each. Feed the two tails up through the button. Keep the nicest side of the button at the top. This is what will show. Leave about 3 inches of the tail above the button.



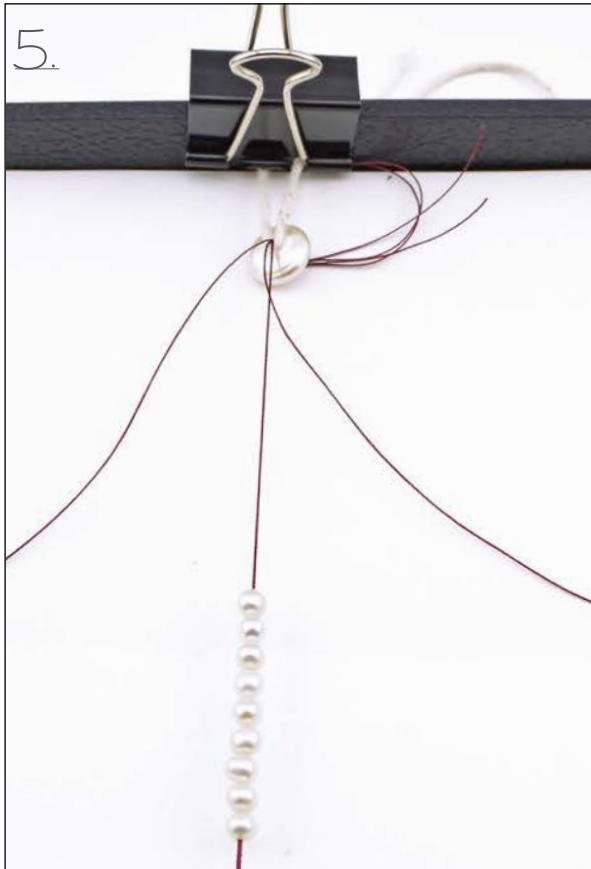
2. Cut another length of Tuff Cord 3 yards long and thread your needle to the mid-way point. Feed the needle and cord down from the top of the button, leaving about 3 inches of Tuff Cord above the button.



3. Tie all the tails together in an overhand knot. Separate the tails and gently pull to tighten down any loose Tuff Cord so you have a compact knot. Add a dab of glue to the knot and give the knot a moment to dry.



4. Slide the button up against the knot and now you're ready to get really started!



5. Using a piece of twine or leftover cord, secure your project to the board. This can be done with binder clips onto a baking sheet or design tray. Of course a [macramé board](#) is an excellent choice. Find the one you like. If you need a refresher, please refer to [Skill Builder: How to Secure a Project to a Board](#). String your beads onto the needle cord before you secure the other end of your project to your board. If you are making a random pattern, like in Poetry in Pink or Grey, you might want to start off stringing 6-10 beads on and seeing how you like your pattern before you commit to all of the beads.

6. With your two loose cords, start your macramé.  
If you need a refresher, please refer to: [Skill Builder: How to Macramé a Square Knot](#).



In Poetry in Pearls, the spacing of the pearls is 6-7 complete square knots. Remember a square knot is a half knot done with the right cord and then a half knot done with the left cord. The two knots together to complete one full, square knot.



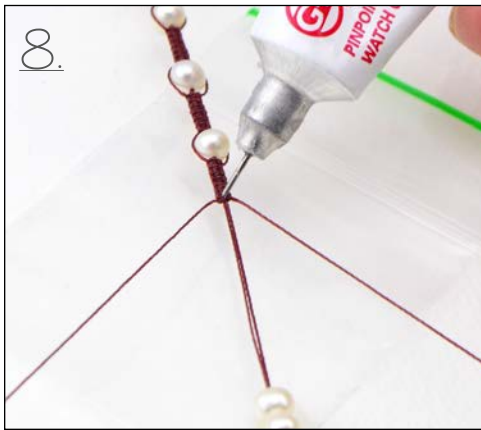
7. Continue adding beads and knotting. You can make your spacing between beads even or random; both have a wonderful look.

Helpful Hints to Remember:

When you want to take a break, it helps to secure your two macramé cords to your tray with binder clips. That way your knots don't get loose while you're away.

When you're gluing on your project, it's also a good idea to place something, like a small plastic bag underneath, so glue doesn't drip onto your board surface.

As you continue knotting, you may find your two macramé cords are getting precariously short. It's hard to say exactly how much Tuff Cord to cut when you first start the project, because the amount you go through can vary with the number of knots between beads. But, not to worry, it's easy to add a new cord!



8. When you have about 12 inches of Tuff Cord left, it's time to add thread. Finish knotting the complete section before your next bead. Dab glue on the last two knots. Slide up your next bead.



9. Cut a new length of Tuff Cord 2 yards in length. Find the midway point and tie an overhand knot around your main cord. Pull the knot tight and bring your next pearl up next to it.



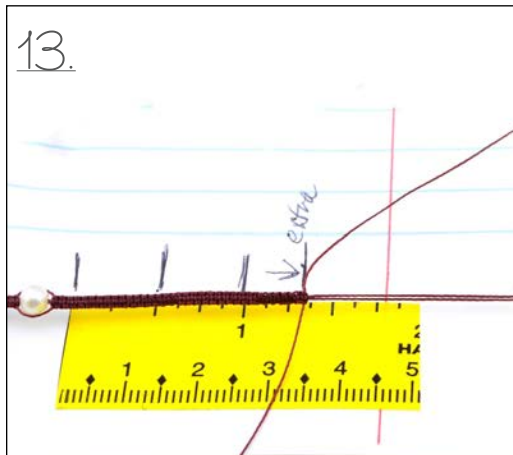
10. Take the new cord tails and start your macramé knotting below your new bead.



11. Cut the old tails short leaving about 1/2 inch on each.

12. As you continue to macramé, rotate placement of your project to give yourself more open cord to macramé. When you do this, take some time to try it on and see your progress.

With a scrap piece of paper and a pen, jot down the size of your button because as you get closer to your ideal measurement, you need to take into account the length the button loop is going to add to your project.



13. Your button loop will add a little over an inch to the length. When you get to the last bead you are adding, begin macramé of the button loop. For the button used in Poetry, you will macramé approximately 1-1/4 inches.



14. Remove your project from the tray and try the button loop around the button. How much more do you need to macramé to make sure the button will fit? Don't go overboard and make it too large. A good fit that allows room for the button to just move through is enough.

15. In order to macramé the button loop, reposition the twine around the middle of the button loop.

Take the two tails and macramé OVER a couple of the knots you made when you first starting knotting the button loop. It adds some girth to the macramé, but it's not very noticeable.







16.

16. The cords with the needle attached are no longer needed. Cut them away leaving just 1/2 inch of cord.

Take your macramé cords and tie a knot below the last pearl you added.



17.

17. Dab some glue along this section between the two pearls and make sure you dab some glue on the tails from the needle threads.



18.

18. When you have knots completed up to your next bead, cut the excess cord away leaving just a bit.

Note: The macramé is heavier over this section, but it isn't really noticeable and your project knotting is secure.



19.

19. Using flush cutters, go back and cut away any excess Tuff Cord to "almost" at its base...leave about 1/8 inch of a tail.

Note: Cutting the fluffy tails by the button is completely a personal choice. You can leave them, shorten them or remove them.



20. Using flush cutters, go back and cut away any excess Tuff Cord along the project where you added or dropped thread. Cut them “almost” to their base...leaving no more than 1/8 inch on each.

Note: Cutting the fluffy button “tassel” tails is completely a personal choice. You can leave them, shorten them or remove them.



21. Singe the tiny tails left along the project. But before you zap away the excess threads, ALWAYS test your thread burner’s melting strength/temperature on a spare bit of cord.

If you need a refresher, please refer to our Skill Builder: [How to Singe a Cord with a Thread Zap II](#). It is basically the same for the Ultra Zapper.



23-23. Try on your creation and think about where you’d like to position the charm(s). With this wide pearl button, we didn’t want the charm to get lost, so we decided on the macramé between the first two pearls at the start. You can put charms anywhere you like.



With a limited amount of pearls (or any bead you choose), take some time to space them out at the beginning to your desired length, so you don't run out of beads. If your ingredients are unlimited, you won't have to do this. Once you know your spacing based on beads, you can then gauge the distance you want to macramé between each knot.

Enjoy and happy beading!

We hope you've enjoyed this project and will tell your friends about us...that's how we can keep the love of learning growing. Thank you and please share your designs with us either by [email](#) or on [Facebook](#). Happy beading! ~ janice



### *Poetry in Spring*

1 strand Cream Freshwater Pearls  
Micro C-Lon in Peridot

1 Be Still Charm in Antique Copper

1 Anne's Button

Optional: 1 Perfect Pi Disc in Serpentine in Greentones

(if you want to wear as a necklace)

### *Poetry in Blush*

1 strand Peach Blossom Freshwater Pearls

Micro C-Lon in Sable

1 Anne's Button

1 Be Here Too Charm in Antique Copper

Optional: 1 40mm Pi Disc in Crazy Lace Agate  
(if you want to wear as a necklace)



### *Poetry in New Gray*

1 strand Soft Grey Freshwater Pearls

Micro C-Lon in Gray

1 Run Around Button

1 Made with Love Charm in Antique Silver

Optional: 1 40mm Pi Disc in Crazy Lace Agate

(if you want to wear as a necklace)

### *Poetry in Petal Purple:*

1 strand Purple Iris Freshwater Pearls

Micro C-Lon in Light Blue

1 Run Around Button

1 Full Lotus Charm in Antique Copper

Optional: 1 40mm Pi Disc in Sodalite

(if you want to wear as a necklace)





When using a button with two holes, the Poetry Project is the same except for how to add the button, which is explained below. The following instructions can be done with Tuff Cord #1 or Micro C-Lon. The difference between Tuff Cord and Micro C-Lon is marginal: knots are about the same size. The Micro C-Lon is available in more colors but can tangle more easily due to its silky texture.



Cut a length of cord 7 yards long. Thread your needle to the middle of the cord.

Tie the two tails into a temporary overhand knot to help keep the cord ends from tangling as you get started.

A. Thread your needle through the holes of the button once and measure the length of the needle cord to be about 48 inches long. Loop the needle and cord again through the button holes.



B. Secure the button to one end of the board with an extra piece of twine or leather. It's best to feed the twine through the hole of the button and secure it that way rather than scooping up the button by wrapping the cord around it from underneath. Feeding the twine through the button hole ensures you begin your macramé stitches right under the button and don't create excess space before your first macramé knot.



C. Cut the temporary knot off the tails. Secure the needle end to the bottom of the board. Macramé about 12 full knots or as many knots as you need to just clear the edge of the button. This view is showing the button from the natural shell side (or back).

Un-secure the needle end from the board and string on a pearl and macramé below it. In this sample, there are 4 full square knots between the first two pearls and 8 full square knots between every pearl after that. It's certainly okay if the distance is a bit more random, but if you only want to use one 16-strand of pearls for a 6 wrap bracelet, you're going to have to be pretty measured in your knots to get the desired length.



D. Un-secure the needle end from the board and string on your charm and additional pearls.



E. Feed the tails of cord through the closed loop of your charm. (If you're adding a charm with a jump ring, you can skip this step and add your charm later using pliers.)



F. Slide the charm up so it sits on the completed knots. Bring up another pearl and continue to macramé. You will have to add threads, as your initial cut of Micro C-Lon is not enough to do the entire project. Follow Steps 8-11 in the Poetry Handout for adding a Thread.

The continuous macramé knotting is the same for the rest of the project. Follow Steps 6-21.

When you are done, you will have a real treasure!



The next page features how to add a disc and wear it as a doubled necklace.



If you decide to wear as a necklace, adding a focal pendant really adds curb appeal. It's easy to do! Wear it long or double it up. And to wear it doubled, here is an easy way to loop it closed:

