

Melon Collar Baby

Two Needle Right Angle Weave (RAW) Project

This design, made with Two needle Right Weave, achieves it's subtle curve by stringing 10mm English cut beads opposite two 6mm (12mm combined) Melon beads.

RAW, using the 1 or 2 needle method, can be done with any size bead in any combination. The different combinations and colors allow you to create amazing designs. See additional handout for Two Needle RAW thread path explanation.

Ingredients 6mm Melon Bead - 5 strands (Color 1) 6mm Melon Bead - 1 strand (Color 2) 10mm English Cut Bead - 1 strand Czech Faceted Drop - 1 strand 11/0 Seed Bead	Wire/thread protectors 4mm oval jump ring Lobster clasp 2in chain Fireline Size 10 or 12 beading needle
--	--

STEP 1

Begin by putting a needle on both ends of a full wing span length of thread. Don't worry if it seems long. You're starting from the middle stitching with each half being only one arm's length.

NOTE: I used Fireline. Your thread must be thin enough to make multiple passes through the 11/0 seed bead without fraying.

STEP 2

Using your left needle, string on one 6mm melon and one 11/0 seed bead. Repeat 3 times and drop your beads to the center of your thread.



Fig. 1

STEP 3

Take your right needle and cross it through the 11/0, 6mm, 11/0 (the last 3 beads added). Pull tight. These three beads act as one bead. This remains a constant throughout the piece. Check to make sure your beads are centered on your thread.



Fig. 2



Fig. 3

STEP 4

Next, using the left needle, pick up a 6mm, 11/0, 6mm, 11/0. Using the right needle, pick up a 6mm. Again, cross the right needle through the 11/0, 6mm, 11/0 and pull tight as in Fig. 3.



Fig. 4



Fig. 5

STEP 5

Next, with your left needle, pick up a 10mm English Cut, 11/0, 6mm, 11/0. With your right needle pick up 2 6mm. Again, cross your right needle through the 11/0, 6mm, 11/0 as before. Pull tight and maintain good tension as you proceed.



Fig. 6



Fig. 7



Fig. 8

STEP 6

Repeat Step 4 then Step 5 eight more times. Then Step 4 two more times.

Keeping your work on your bead mat while stringing will help maintain your tension and allow the curve to form. This will seem a bit floppy but it will tighten up in the next steps.



Fig. 9

STEP 7

You will now weave back through your beads to reinforce and add embellishments. Follow your thread path as if you are starting from the beginning. The only difference is when you get to the double 6mm beads. Instead of weaving straight through both you will stitch through one bead, pick up an 11/0, a 6mm melon in color 2, and an 11/0. Drop them down on your thread so they meet at the center point of the two 6mm. (Fig. 10) Skipping the 11/0, stitch back through the 6mm and 11/0 then proceed through the second 6mm of the pair. (Fig. 11) Pull tight so that the bead group is snug against the 6mm pair. (Fig. 12) Repeat Step 7 at the next pair of 6mm melons.



Fig. 10



Fig. 11



Fig. 12

STEP 8

Repeat Step 7 but add a Czech drop and three 11/0 to your embellishment. Let all the beads drop down. (Fig. 13) Skipping the three 11/0, stitch back through the drop the 11/0, 6mm, and 11/0 pulling tight to form a picot at the base of the drop. (Fig. 14) Continue through the second 6mm of the pair, snug up your beads and proceed to the next pairing. (Fig. 15) Repeat Step 8 four times then repeat Step 7 two times. (Fig. 16)



Fig. 13



Fig. 14

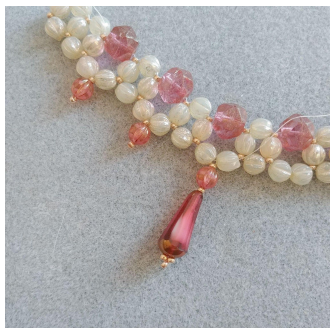


Fig. 15



Fig. 16

STEP 9

End by weaving your thread through following established thread paths finally crossing through a center 6mm bead. (Fig. 17) Do not exit through an 11/0. You risk cutting an unwanted thread and/or having the thread end stick out. This completes the base of the collar. (Fig. 18)



Fig. 17



Fig. 18

STEP 10

For this necklace I completed the collar on each side using the same 6mm melons and 11/0s following the RAW pattern in Step 3. Start a new thread on each end and continue in your preferred color pattern. (Fig. 19 - 21)



Fig. 19



Fig. 20



Fig. 21

STEP 11

To taper down exit the last RAW bead group and add four 11/0s to each strand. (it will look like you have 5) Thread both needles through a 6mm and 11/0. Repeat two more times or to desired length. (Fig. 22) Add an 11/0 to each strand. (Fig. 23) Going in opposite directions stitch each needle through a thread protector and back through the two 11/0s. (Fig. 24) Stitch both needles back through the beads ending with one needle through each set of four 11/0s. (Fig. 25) Weave through to end your thread as previously explained. (Fig. 26)



Fig. 22

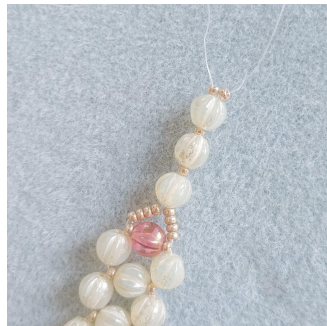


Fig. 23

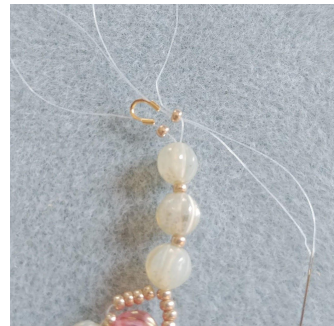


Fig. 24



Fig. 25



Fig. 26

STEP 12

Add a 4mm jump ring to each thread protector. Add a 2in length of chain to one side and a lobster clasp to the other. (Fig. 27) The total length is about 17"-18" plus the bit of extender chain.



Fig. 27

Color Version 2

Ingredients 6mm Melon Bead - 3 strands (Color 1) 6mm Melon Bead - 1 strand (Color 2) 10mm English Cut Bead - 1 strand 4mm Fire Polish Bead - 1 strand Czech Faceted Drop - 1 strand 11/0 Seed Bead 8/0 Seed Bead	Heishi Spacer Oasis Component Chain Toggle Clasp 4mm oval jump ring Fireline Size 10 or 12 beading needle
--	---

The steps are the same as above except that I started and ended with an Oasis component and three 8/0s as my first and last bead. (Fig. 1 and Fig. 2)

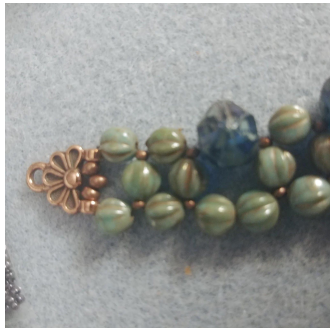


Fig. 1



Fig. 2

I only added drops to the five center 6mm pairs but varied the length of the dangles. I played around with different combinations then decided on adding heishi spacers, 8/0 seed beads, and 4mm fire polish beads to the drop style above.. (Fig. 3, 4, and 5) As Kate says, "You do you!"



Fig. 3



Fig. 4



Fig. 5

To finish off this necklace I used a doubled over strand of Two Lanterns chain connected by 4mm oval jump rings. I decided on a toggle clasp.



For a tutorial on single needle RAW and how to embellish further please refer to Beadshop.com Learning Pages under Seed Bead School. Emily Miller has provided excellent diagrams to accompany the videos.

<https://www.beadshop.com/pages/right-angle-weave>

<https://www.beadshop.com/collections/r-a-w-part-2-br-10-4-17>

Links to bead colors used:

Strawberries and Cream

<https://www.beadshop.com/products/10mm-english-cut-pink-fuchsia>

<https://www.beadshop.com/products/6mm-melons-opal-ivory-and-mercury>

<https://www.beadshop.com/products/6mm-melons-golden-pink>

<https://www.beadshop.com/collections/faceted-czech-drops/products/faceted-drops-rosewood-bronze>

<https://www.beadshop.com/products/11-4204-duracoat-galvanized-champagne-11-0>

Waters Edge

<https://www.beadshop.com/products/6mm-melons-blue-turquoise-picasso>

<https://www.beadshop.com/products/6mm-melons-mustard-brown-wash>

<https://www.beadshop.com/products/10mm-english-cut-blue-sapphire-picasso>

<https://www.beadshop.com/collections/faceted-czech-drops/products/faceted-drops-cobalt-bronze>

<https://www.beadshop.com/products/11-0-metal-seed-bead-antique-copper>

<https://www.beadshop.com/products/4mm-picasso-opaque-red>