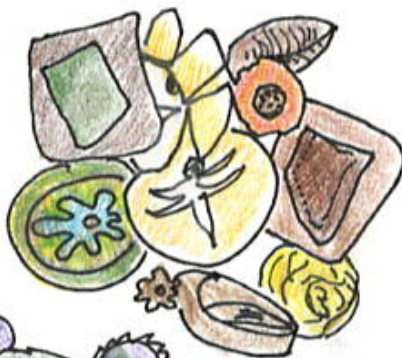
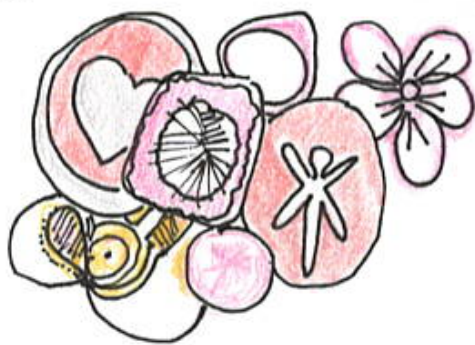


When beadshop introduced the Czech Mixes of Table Cuts by color, I was in Heaven... the beads I was waiting for to design my "neck mess", which I was ready to call "Fun Times."

This project is intended for intermediate level with some wire-wrapping experience. And my guess it takes a full day to a weekend to complete, depending on how fast you are.

1. Begin by freeing your beads from their fishing line. My sample used:

Czech Mix-Crystal Copper, Czech Mix-Natural and Czech Mix-Forest and 8/0 seed bead 8-641.

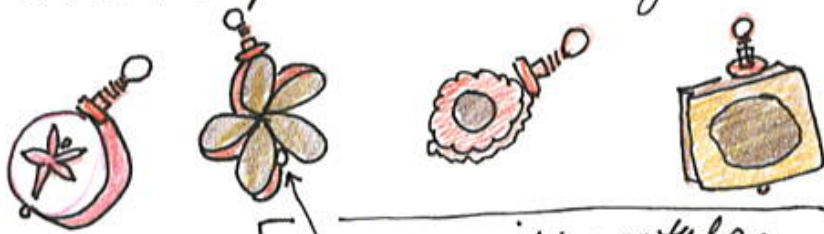




2. I also used assorted link chain in antique copper, some metal

beads and 22g. wire + a hook and extension chain. (Plus head pins and jump rings)

3. Start by not worrying! That's right... the very last thing you want to do is get stuck on how it's all going to look. Your goal is to make a mess! And that mess will look cohesive when you're done.

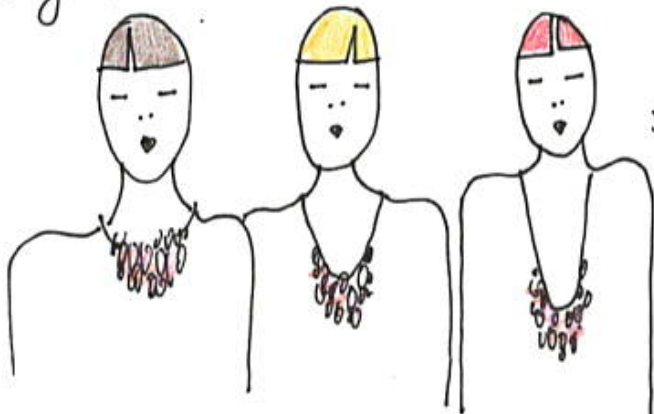
4. Wire wrap each bead you want to use



beads with petals look best on head pin if you position the dot or head of the pin  at indentation. Flat bead at top looks best  here

Each wire-wrapped bead will be attached to a jump ring once you decide its placement in the design. Don't worry!

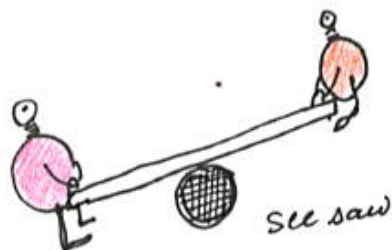
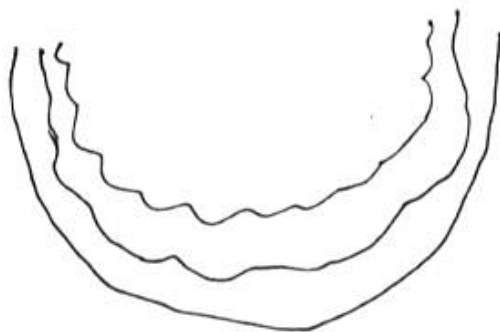
5. Once all your beads have been wire-wrapped (you can always add more embellishments later!), whether you wear it close to your neck or longer, the area to decorate is about the same.



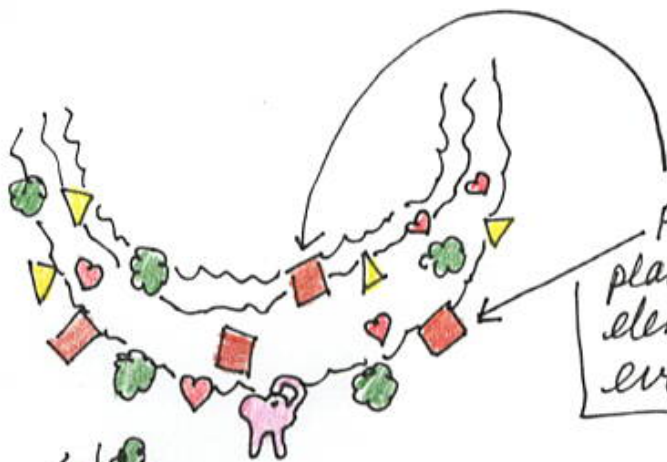
Select chain that has links large enough so it's easy to spot the link you want to attach to later.



6. Cut the chains 3 slightly different lengths. My chain was  $9\frac{1}{2}$ ",  $10$ " and  $10\frac{1}{2}$ ". Lay them on a flat surface in a smile.



7. Don't plan too much, but the heaviest + largest bead units should be positioned towards or at the center and/or the longest chain. It's much like a see saw. They will pull down on the chain wherever you place them.



Play around placing strong elements scattered evenly.



8. When I was pleased with my scattering, I took a photo on my smart phone so I would have a reference to work from. My design has about 40 drops total.

9. Start attaching each bead unit to the longest section of chain in the middle. Line up your chain so your bead units are placed on the link that faces down.



use your chain nose pliers and bent chain pliers to open and securely close your jump ring.

Continue adding bead units to the full length of chain. Leave about  $\frac{1}{2}$ -1" of chain empty on each end.

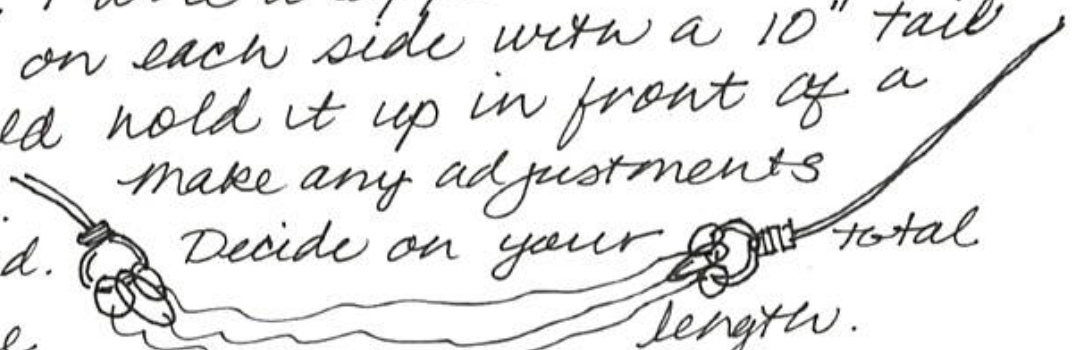
Occasionally hold the chain up to see if you're happy with the placement.

10. Repeat step 9 with your middle chain and then your shortest. I found I moved a few of my bead elements around until I had the "right mess".

In order to really evaluate the results, I wire wrapped the <sup>3</sup> chains together on each side with a 10" tail so I could hold it up in front of a mirror. make any adjustments as needed.

necklace

Mine is 17" plus a 2 $\frac{1}{2}$ " extender chain.



11. Now it's just deciding how you want to reach the finished total length. I used wire-wrapped bead units, a hook and a short length of chain so I could make it adjustable.



12. That's just about it! Please feel free to share your creation with us on our Facebook page, The Bead Table, or email it to [info@beadshop.com](mailto:info@beadshop.com).

happy beading,  
jane