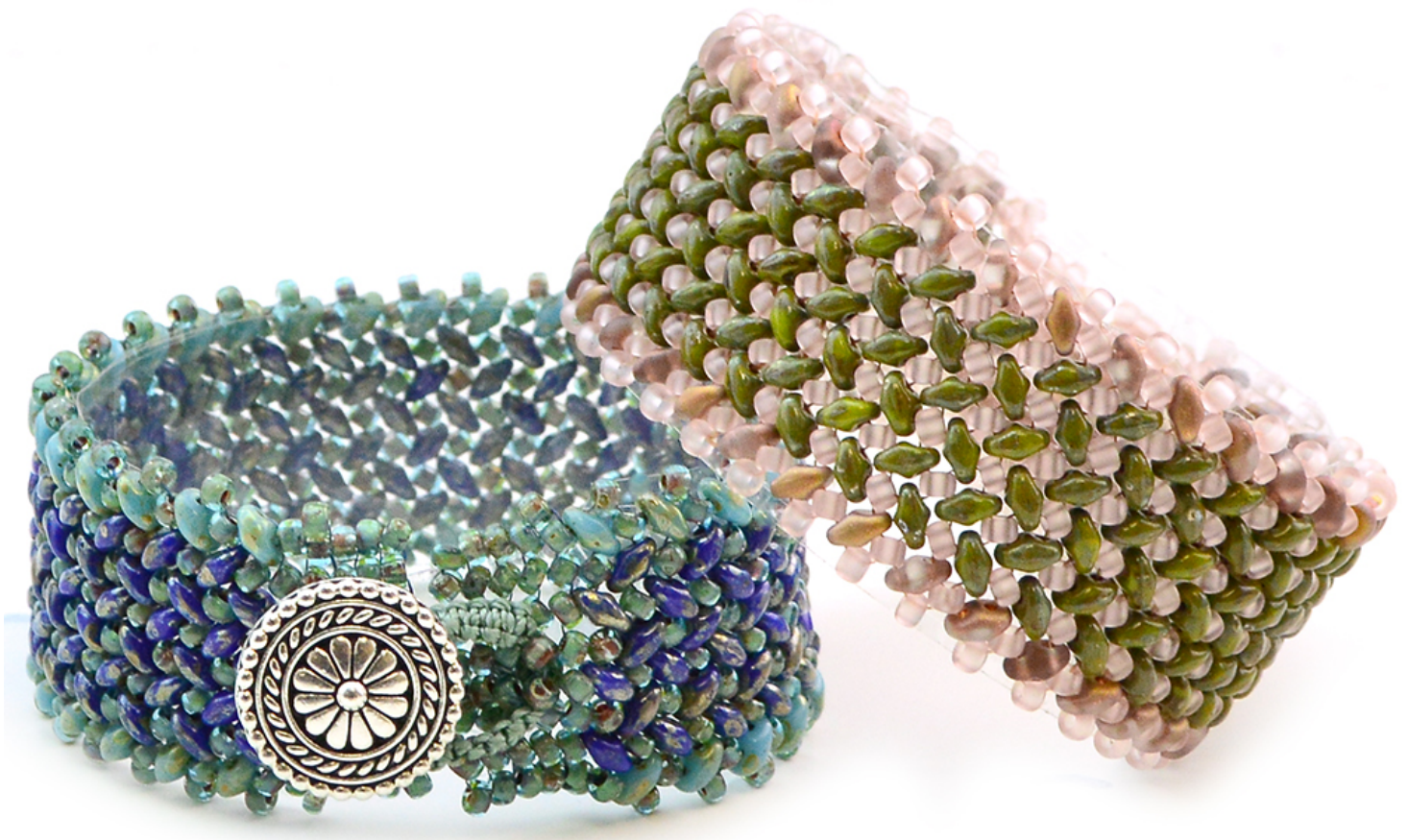


facebook LIVE:

8.09.17

Pathways Herringbone Weave



Facebook LIVE with Kate Richbourg and Emily Miller
Pathways Cuff Design by Linnea Lortsher



Welcome to Episode Notes for Facebook LIVE this week. Kate and Emily revive a wonderful design originally created by Linnea Lortsher, our former Learning Director. Using a seed bead stitch called Herringbone adapted to use for SuperDuos and macramé knotting for a button loop, Emily guides us again through the essentials of the Pathways Cuff.

The original handout and videos by Linnea are really excellent. In fact, there's so much learning for this project that Episode Notes this week is really a bit of background, links to all the learning, and the graphs Emily shared on Facebook LIVE. So, be sure to download the handouts Linnea created, watch Kate and Emily in their Facebook video, *and* watch Linnea's project videos. We think you're going to love Pathways as much as we do.

Thanks for watching!
~Kate and Emily



It all started in 2015, when we first started carrying a Czech bead called "Superduos," a very cute 2-hole bead from the Czech Republic. It exploded on the bead market and helped restart the craze for 2-hole beads. It has yet to die down. It's hugely popular.



We began with a simple wrap bracelet project, Seashore, and before we knew it, we were happily adding Superduos to a number of projects.

Over the course of 2015-2016, Superduos featured beautifully in submissions to our Autumn Look Book, including our first place winner, Harvest by Lauren Hartman.

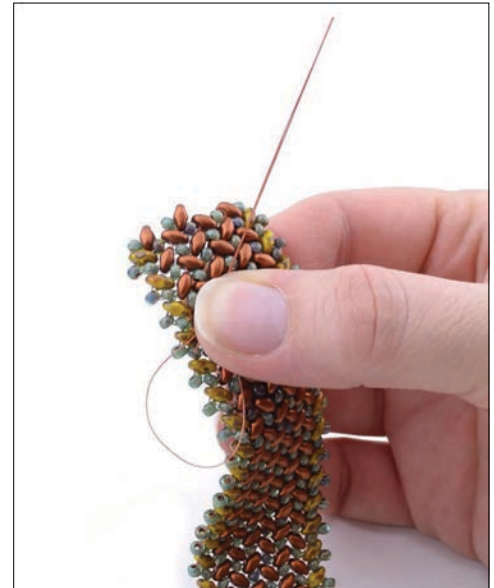


In 2016, Linnea Lortsher came on board as our Learning Director. With her wealth of knowledge about seed bead weaving and techniques, creating a cuff with Superduos using the Herringbone Stitch was easily in her wheelhouse. Before moving to Oregon with her family, Linnea had time to create some projects and videos, including Pathways and Dancer Earring. We miss her but she left an incredible legacy. Thank you, Linnea!

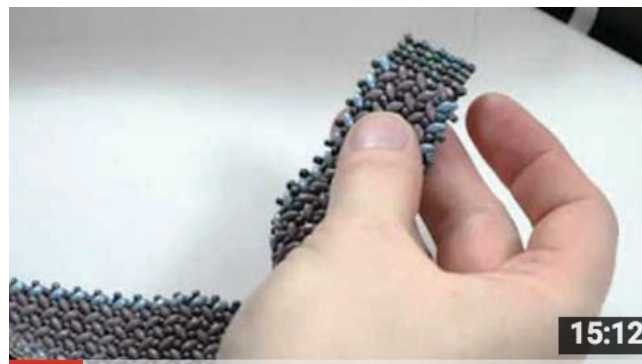


Pathways Cuff Step-by-Step Handout

Skill Builder: Adding a Thread in Superduo Beadweaving



Linnea's 5 Part Video Series on Youtube:
This is also very clear. Linnea broke the project into smaller steps, so be sure to watch all five.



Links to Learning...

[Pathways Cuff](#)

[Adding Thread in Superduo Beadweaving Skill Builder](#)

[How to Macrame Skill Builder](#)

[Class Handouts](#)

[Skill Builders](#)

[Seed Bead School](#)

[Color Collections](#)

[Last Week's FB LIVE: Summertime Blues](#)

[Previous Facebook Live Broadcasts](#)

[Facebook Live Youtube Playlist](#)

[Free Tip Friday Youtube Playlist](#)



Links to Us...

[Customer Service](#)

kate@beadshop.com

emily.beadshop@gmail.com

janice@beadshop.com

[beadshop Facebook Page](#)

[beadshop Twitter Page](#)

[The Bead Table Blog](#)

Links to Events...

[Color By Design Bead Retreat Information](#)

[Bead Fest Philadelphia](#)

[Kate's Class Schedule at Bead Fest Philadelphia](#)

[Bead Fest Tacoma](#)

[Kate's Class Schedule at Bead Fest Tacoma](#)

Links to Project Ingredients...

[Pathways Cuff Project Page](#)

Waves

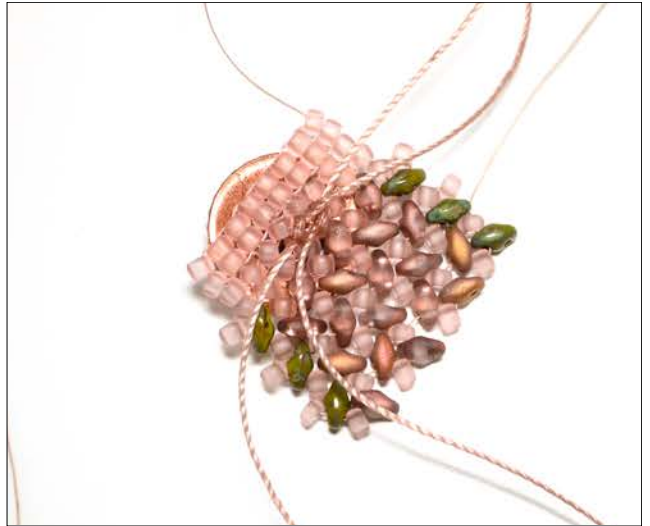
- 2 [Silver Bali Buttons](#)
- 1 Spool [Denim Blue KO Thread](#)
- 1 Spool [Sage Regular C-Lon](#)
- 1 Tube [Picasso Turquoise Blue Superduos](#)
- 1 Tube [Picasso Opaque Blue Superduos](#)
- 1 Tube [Picasso Transparent Olivine 8/0 Miyuki Seed Beads](#)

Bayou

- 2 [Copper Bali Buttons](#)
- 1 Spool [Blush Regular C-Lon](#)
- 1 Spool [Natural KO Thread](#)
- 1 Tube [Picasso Opaque Green Superduos](#)
- 1 Tube [Crystal Capri Gold Matte Superduos](#)
- 1 Tube [Matte Transparent Light Tea Rose 8/0 Miyuki Seed Beads](#)

And, you'll need:

- 1 Pkg [Size 12 Seed Bead Needles](#)
- 1 Pkg [Collapsible Eye Needles](#)
- 1 Tube [GS Hypo Cement](#)



Links to Products...

- [Superduos Two Hole Beads](#)
- [8/0 Seed Beads](#)
- [Half Tila Two Hole Beads](#)
- [Size 12 Seed Bead Needles](#)
- [KO Thread](#)
- [Beeswax](#)
- [Xuron Thread and Cord Scissor](#)
- [Buttons](#)
- [Bali Buttons](#)
- [Regular C-Lon](#)
- [Flexible Eye Needles](#)
- [GS Hypo Cement](#)
- [Toggle Clasps](#)
- [Czech Glass Buttons](#)
- [Heishi Metal Beads](#)
- [Freshwater Pearls](#)
- [Full Moon Emerald Czech Glass Button](#)
- [Full Moon Matte Bone Czech Glass Button](#)
- [Melon Czech Glass Beads](#)
- [Just In Collection](#)



[Green Girl Studios](#)

Emily's Herringbone Bead Pattern. Feel free to download!

