

# facebook LIVE:

7.26.17

Peyote Stitch





## Welcome, Everyone!

This week is another chapter in “seed bead school,” where Emily Miller dives into her immense tool kit of knowledge about seed beading techniques, stitches, and general life-lessons we can learn from beading.

It’s so rewarding to watch a master technician at work. So, let’s get going!  
Begin watching at **Minute Marker 11:12**. Seed Bead School is in session!

Please note: We are thrilled you love Episode Notes. The response has been so positive. We will be posting the Viewer Mail from this week on our [Blog, The Bead Table](#) after Episode Notes are posted, so be sure to check there.

On the last page of Episode Notes will be links to products, projects, and events, along with contact info for Kate and Emily. Thanks so much for your feedback and please keep sending in your questions and beading samples! We love it!!

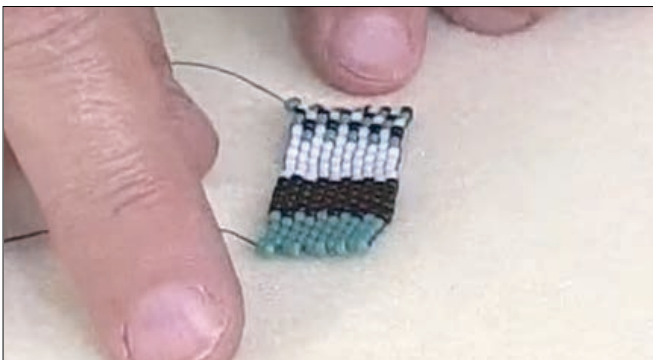




The first thing we need to know about Emily Miller is that she has a very relaxed, no-stress approach to beading. We are learning this about her and it's important to share this with you from the start. Some instructors are super buttoned up and it can only be one way. Not Emily! She wants you to make mistakes. She even wants you to start collecting them in a nice jar!

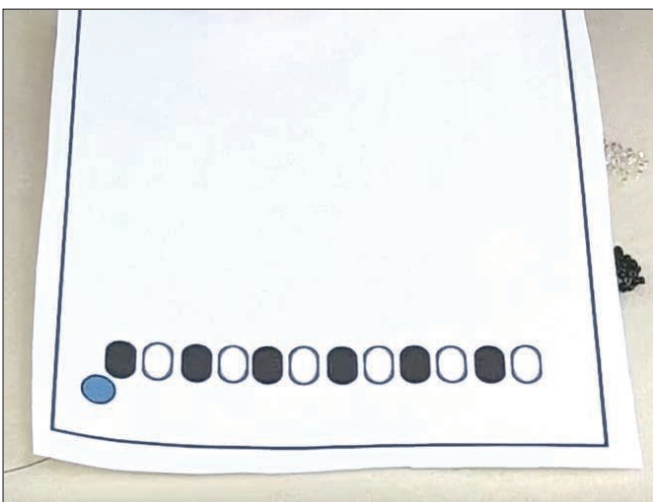
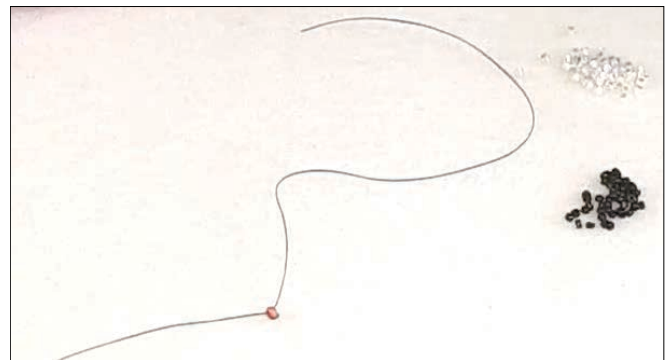
So, take a deep breath...it may take you several times watching the video to pick it up. But, if you believe Emily, you will learn it!

Okay, let's begin!



### Minute Marker 22:11

Today Emily is going to teach flat peyote using three colors of Size 11/0 seed beads. She begins by cutting one yard of KO Thread and threading a Size 12 Seed Bead Needle. She strings on a stopper bead about 8 inches from the tail of the thread.



Emily positions her stopper bead in the same corner whenever she works, so even if she puts her work down, she knows the orientation when she picks it up again.

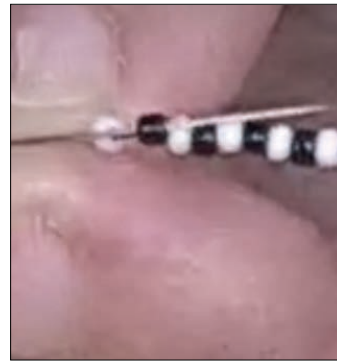
She begins by stringing on 12 seed beads- 6 black and 6 white.



Your first two rows look like one row, but as you string on more beads and go back and through beads, you'll see the beadwork (and rows) emerge.



Pick up the new color to start your third row. Peyote has a mantra: Pick up a bead, skip a bead, go through the next bead.



You will skip the white bead and thread your needle through the black bead. Be sure to keep the tension tight on your thread, as Emily demonstrates.



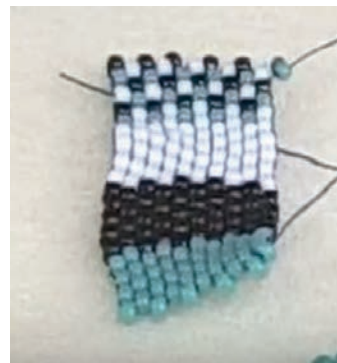
Pick up a total of 6 blue beads until you have the row finished.



Each row that is added is 6 beads of one color going through *only* the beads in the previous row.



You will see the sawtooth edging emerge. And the magic of peyote is that ends or pieces can be seamed together.



Peyote has many possibilities. (In this photo, we want to point out that the beads that look grey are actually turquoise.)



Once you have confidence in your stitches, you can think about trying to ombre your colors. (See Page 5)



And, when you're designing your piece, Emily has learned from experience, to add your button first and then create the loop. (See Page 6 for button diagram)  
Okay, are you ready to ombre?

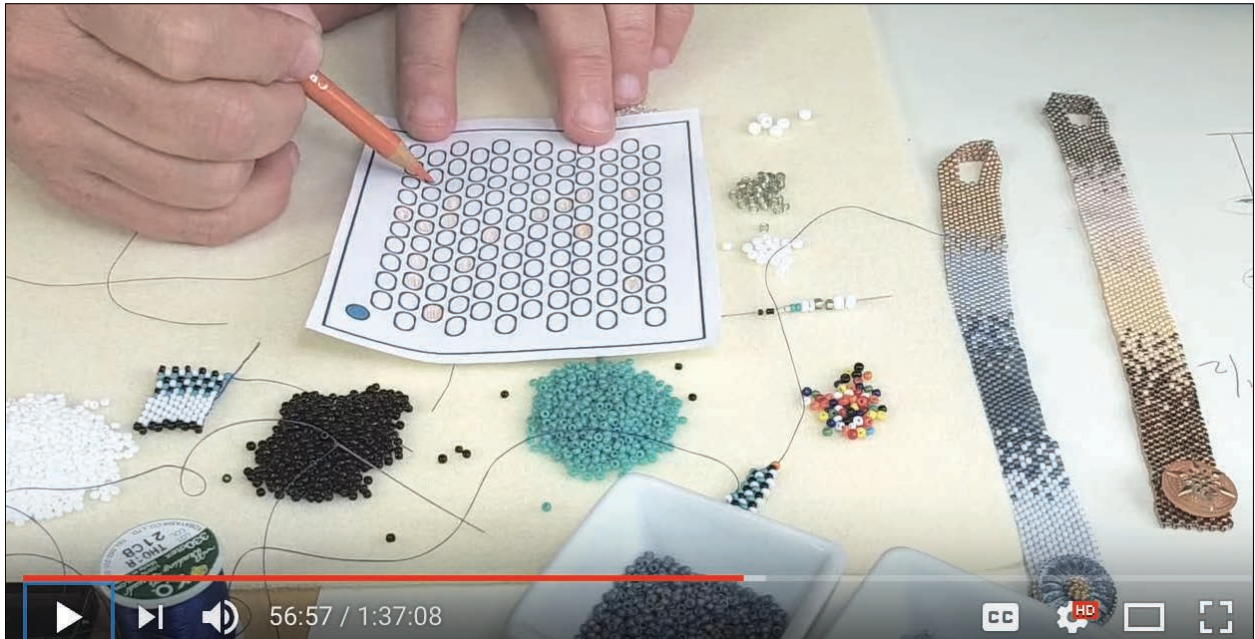


## How to Ombré

...Minute Marker 56:57

There are so many different ways to create the watercolor effect from one color to the next. Emily introduces graph paper to help you map out your variegation, but it really is a personal choice. For an intensive on shading with seed beads, please look at our [Tricks to Looming](#) handout. It's adaptable to Peyote. Also, Kate shows one of her samples, [Illusion Cuff](#), that also has ombré shading.

See page 10 for printable graph design.

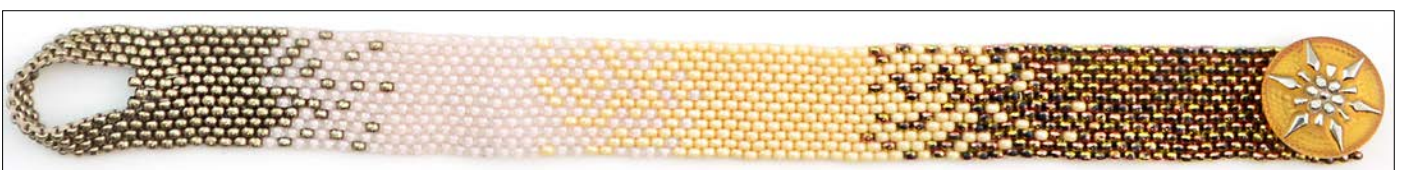


Here are the Project Maps for Emily's samples. You can adjust the length by shortening the rows of beads in the solid section or you can ombré your own style. Emily and Kate start their stitching a few rows from the button end. Each section measures about 1- 1/12 inches in length. Before getting into adding the button, they talk in more detail about ways to get shading or ombré.

### Early Morning Ombré



### Golden Ombré



## Adding your button...

**Minute Marker 1:04:18** Emily demonstrates how to add the button to the almost-middle of the row. Since this is an even-count peyote, the middle is actually between two beads. But, as she points out, no one will notice. See below the diagram Emily has created on how to stitch the button into your project. Think of the shank as a bead in the row. In the next row of beads, Emily adds a bead on either side of the shank to stabilize it in place. Then she treats the bead, shank and bead as one bead and strings through them as one.

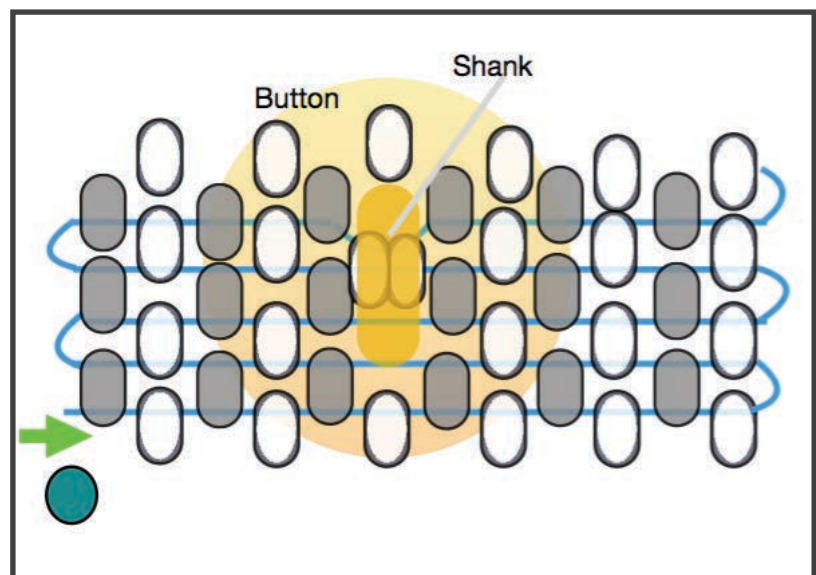


### Minute Marker 1:07:55

Notes on adding a button as a clasp-

Add the button as if it is a bead first, then on the next row add two beads that will fit into the button shank.

On the next row, treat these two beads as one. Continue to bead past the button for a few rows, this will also help the beadwork to lay flat under the button against your wrist.

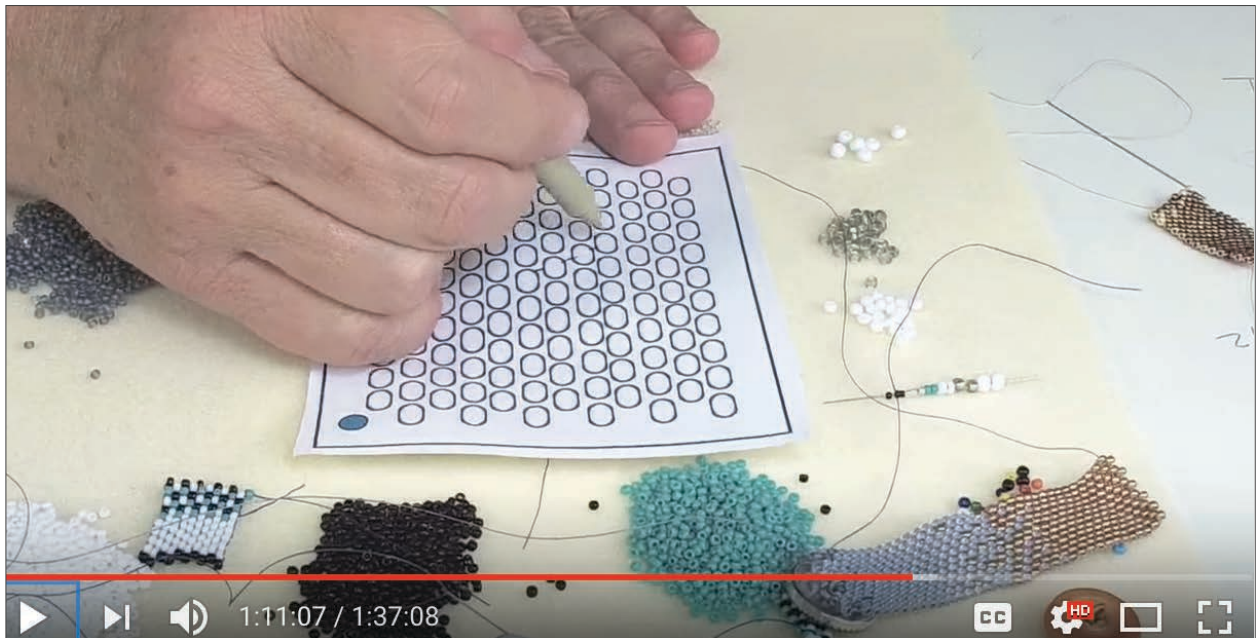




## Adding a New Thread...

**Minute Marker 1:09:50** Watch here to learn how to add thread into your weaving. And Emily considers you're running out of thread when you have to physically lean over with your needle and thread to pick up another bead off your bead mat.

1. To add another thread, stop in the middle of a row. Don't cut your old thread yet! Just let the old needle and thread dangle. You always add a new needle and thread before you dispose of your old.
2. Cut a brand new thread about 1 yard in length and thread a new needle.
3. Start your new needle and thread about three or four rows back in the middle. Thread it through at a diagonal. Emily demonstrates this at **Minute Marker 1:10:50**.
4. Emily likes to "cross her threads," she likes to think of it as drawing a bow tie.
5. With your new thread, you want to come out where you left off with your old thread. Clip the tail of the new thread away. Your new thread is stationary.
6. And with your old thread, stitch in back into the beadwork in the opposite direction of the new thread. Come out into the middle of your beadwork and then trim the thread away.



## Adding your button loop....

### Minute Marker 1:17:30

1. Stitch two beads into the row on the end. Then turn and go back and add two beads.
2. Continue stitching rows of two beads (37-39 rows for the Czech glass bead in this project) until you have a strip long enough to reach comfortably around your button.

### Minute Marker 1:27:16

Running out of time, Emily shows how the the rows of 2 beads create a nice loop.

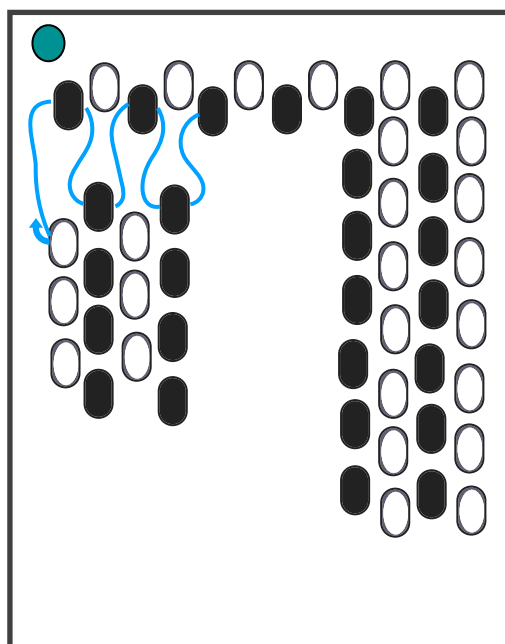


### Minute Marker 1:27:40

Notes on the bead loop for the button clasp-

Add the button first, then create the loop to match! The beaded loop is extended from the bracelet by making short rows of two beads. Bead until the loop will fit over the button and rest underneath the button.

“Zipper” the end of the strip to the other side of the beadwork, pass through all the joining beads twice. Secure the end of the thread into the beadwork, using the Figure 8 thread path.







Thanks for watching with us this week. We loved having the chance to share Peyote Stitch, the next pattern in Seed Bead School. Be sure to contact [Kate](#) with your own Ombré and Peyote projects, so that we might have a chance to share your designs with our Facebook audience and on our blog, The Bead Table.

Thanks again and happy beading!

~[Kate](#) and [Emily](#)

### Links to Learning....

- [Peyote Stitch Bracelet Project](#)
- [Facebook Live Videos and Learning](#)
- [Class Handouts](#)
- [Skill Builders](#)
- [Seed Bead School](#)
- [Poetry Bracelet Project Page](#)
- [Stretch Therapy Bracelet Project Page](#)
- [Bits & Pieces Bead Crochet Project Page](#)
- [Illusion Cuff Project Page](#)
- [Tricks to Looming](#)
- [Treasure Chest Bracelet Project Page](#)

### Links to Events....

- [Last Week's Facebook Live Broadcast: Across Cultures](#)
- [Previous Facebook Live Broadcasts](#)
- [Facebook Live Youtube Playlist](#)
- [Free Tip Friday Youtube Playlist](#)
- [Color By Design Bead Retreat Information](#)
- [Bead Fest Philadelphia](#)
- [Kate's Class Schedule at Bead Fest Philadelphia](#)
- [Bead Fest Tacoma](#)
- [Kate's Class Schedule at Bead Fest Tacoma](#)

### Links to Us...

- [Customer Service](#)
- [kate@beadshop.com](mailto:kate@beadshop.com)
- [emily.beadshop@gmail.com](mailto:emily.beadshop@gmail.com)
- [janice@beadshop.com](mailto:janice@beadshop.com)

### Links to Products....

- [Metal Beads](#)
- [Beachcomber Button](#)
- [Seed Bead School Inna Kit Kits](#)
- [Early Morning Ombre Kit](#)
- [Golden Ombre Kit](#)
- [Czech Glass Buttons](#)
- [Delica 11/0 Seed Beads](#)
- [8/0 Seed Beads](#)
- [11/0 Seed Beads](#)
- [6/0 Seed Beads](#)
- [Seed Bead Needles](#)
- [Fine C-Lon](#)
- [Micro C-Lon](#)
- [Cube Beads](#)
- [Shadows Metal Beads](#)
- [Chinese Knotting Cord](#)
- [Metal Slider/String On Enclosure/Clasp Beads](#)
- [Metal Triangles](#)
- [Foam Bead Mats](#)
- [KO Thread](#)
- [Beeswax](#)
- [EZY Mag Hands-Free Magnifier](#)
- [Magnetic Needle Cases](#)
- [Buttons](#)
- [Awl For One Tool](#)

