

## facebook LIVE: 12.27.17

### Year End Wrap



Project by Kate Richbourg  
With Kate Richbourg and Emily Miller on FB Live  
Episode Notes by Drea Carbone  
Photography by Baranduin Briggs  
and Grace Noland

Kate did it again! She created a mixed-media wrap of strung beads, chain, and a wire-wrapped carved component from our Vintage Finds collection. Whether you're celebrating the end of a year, like we did in 2017, or you want to create a stunning, classic design, this one has infinite possibilities.

We had a power glitch while filming, so this episode is in two parts...Part One is some chit-chat and the beginning of a discussion of our materials. Part Two picks up with further discussion of materials and gets into the learning...so for the sake of ease and less confusion, these notes only refer to the Part Two video.

If you'd like to skip the chat about ingredients and get right to the learning, begin at **Minute Marker 13:30** in Part Two and **Page 4** in these Episode Notes.

## **Minute Marker 1:00**

Discussing ingredients, Kate shows how the chain used in the wraps are supplemented by 4mm and 6mm Czech glass. Emily and Kate also discuss different spacer beads and how they can work with the beaded portion of the design. Copper Penny actually uses brass Temple beads as spacers, but to demonstrate how a variety of spacer beads could work, they used Little Shadows in silver in the Silver Mint sample.

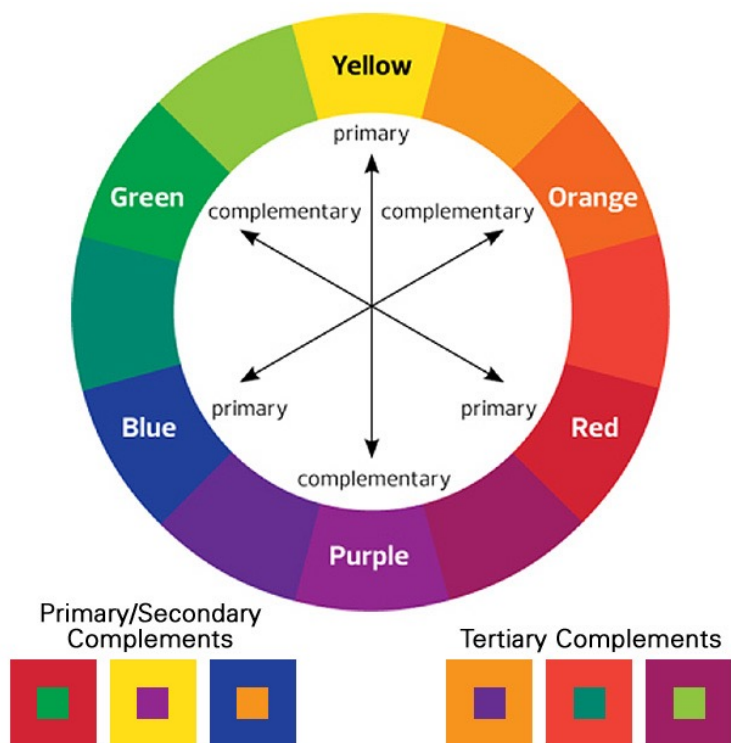


Our Vintage Finds Carved Components are often used as a focal point or pendant, and sometimes we find ourselves very drawn to them without a specific plan for how to use them. Problem solved! With ease, Kate showcases our Square Connector by wire wrapping it on air. Using it this way, as an integrated element of the design really highlights its beauty in a new and exciting way.

Kate begins developing the design of the bracelet around the combination of an interesting chain and the Carved Component. Demonstrating on Emily's wrist, Kate checks components to find one that is the ideal size...you want one that will not overwhelm your wrist. Before making your final selection, check the orientation of the holes. There may be more than one way to wire wrap it and position it: straight-on, square, or perhaps on a diagonal. Take a moment and play with it.



By using two colors of Czech glass across each other on the color wheel, Kate's color palette becomes unexpected. You can do this too. Find two colors you wouldn't necessarily put together and explore their relationship. You might be surprised at what you discover.



In Silver Mint, the ladies used two greens closer to each other on the color wheel. It's a more monochromatic look, yet the greens also feel unexpected. Maybe because one green is cool and transparent and the other is muddier and opaque. Doesn't that give the pieces such different moods and appeal? Don't be afraid to experiment and create combinations that don't seem to "match." This design proves you can put a variety of materials together that don't "go together" and make it work.

The Czech Saturn beads are the visual "glue" that hold the design together. They not only add a new layer of interest to the design, they work as transitional stations between the different sections. With the addition of the Saturn bead between the two sizes and colors of the Fire Polish beads, it bridges any divide you might have in color or size of Fire Polish. It also singles out the Carved Component to say "I'm special" and it tells our eye that the chain makes sense.





### **Minute Marker 11:13**

Emily discusses patterning of beads, just the simple rhythm of a spacer and a fire polish. Kate thinks of it as dot-dash-dot-dash, Emily considers the process as small-large-small-large and remarks on how it looks similar to the links of chain. However you categorize it, It all comes together in the simplest of patterns...no need to overthink it!



### **Minute Marker 13:30:**

Keep in mind that if you're using a toggle clasp like Kate does, you'll want to be sure the toggle bar is attached to the end of your bracelet with a small bead, like the 4mm fire polish. The bar of the toggle bar must be able to turn sideways to fit through the loop, and if the bead you use next to it is too large or bulky, it can be a problem. Kate demonstrates how this works here. Note: On the circle side of the toggle clasp, you can use a Saturn or a larger bead.

### **Minute Marker 14:55**

Let's wire-wrap! Kate shares her amazing skills with us and demonstrates how to adapt wire-wrapping to this project. It's a bit different than the norm. Use your Nylon Jaws to straighten out an 8" length of 22G wire. This is a nice gauge...not too thick, not too thin.

The tools, however, are the same: Nylon jaw pliers, a flush cutter, chain nose plier, bent nose plier, and round nose pliers.



### **Minute Marker 17:45**

Kate brings her wire through a hole of the carved component, then loops it around and through a second time. This double pass is perfect for the smaller holes of the Infinity Clover, but note how Kate used three passes for her Square Connector in Copper Penny. Use your best judgement based on the hole sizes of the connector you are using.

Bring your wire ends together to complete your two loops. Use the shorter wire tail to wrap around the longer as you'll want the longer end free to add your Saturn bead and attach to your toggle.



### **Minute Marker 25:00**

Kate demonstrates a typical wire wrap on the other side of her Saturn bead. Check out our [Skill Builder: How to Wire Wrap a Bead Unit](#) for detailed instructions on this technique. You've seen us use this several times over the course of 2017! Kate adds a tip to show how to straighten your loop out...rolling it slowly and carefully with her Round Nose Plier to center it perfectly. Nice! Add your toggle to this loop and get ready to wrap!



### **Minute Marker 28:00**

Slow and steady wins the wire-wrap race! Kate takes her time to develop and build her wire loops and wraps. Rather than do a single coil of wraps, she does two: One going up the center wire and coming back down again over the first wire wrap. If done carefully, it gives a heartier, meatier look to the wraps. Note the wrap on the left in the photo below, it's still a single coil. The wrap on the right is a double.



Cut away the excess wire carefully and as close as possible to your coil. Use your Bent Nose or Chain Nose pliers to tuck your end in, and adjust your coils and loops as needed. Don't overwork your wire....that can create weaknesses you can't fix.



### **Minute Marker 31:20**

Watch a second time as as Kate starts the wire-wrap on the other side of the carved component, but does not complete it by attaching it to her chain...yet.





### **Minute Marker 34:30**

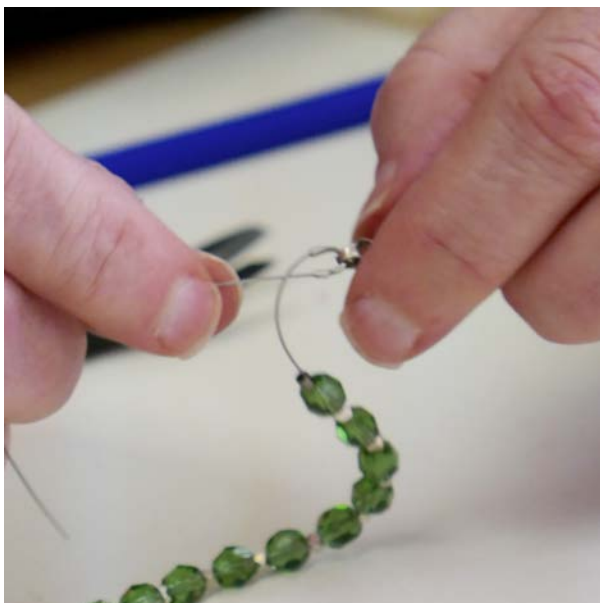
Kate shares her design process at this point in the video. To help her visualize where she is with design and length, she sets aside her unfinished wire-wrap to the chain section, and mocks up the entire bracelet section by section. Kate made the combined length of the two sections of Fire Polish beads long enough to fit around her wrist twice. It's worth noting that the spacers you choose will affect the overall length of your strung section. Copper Penny has thinner spacers and therefore uses more Czech Glass. With Little Shadows being larger, fewer Czech glass beads are used. By using more or less chain, you can create as many wraps as you'd like. Our samples are both 4-wraps.



### **Minute Marker 37:25**

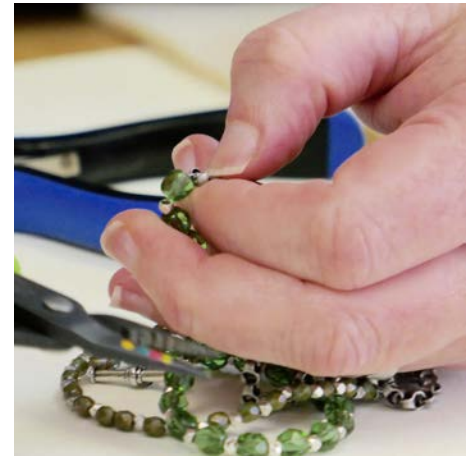
Wire Guards were something we discussed last week while creating The Gatsby Necklace, though we didn't use them in that piece. This week, we're going to use them because of the way we are using Soft Flex: both with chain and a clasp, and with a weightier overall piece. To protect our Soft Flex at these points of contact, a Wire Guardian is a must and will prolong the life of the piece.

Kate threads a crimp tube onto her Soft Flex, then slips her wire guard on. Hook the U of the Wire Guard through loop of the toggle bar, thread back through the crimp tube, and crimps. Our Skill Builder and last week's Gatsby broadcast go over crimping Soft Flex in depth.



### **Minute Marker 48:30**

We'll repeat the crimping on the other end of our strung beads to attach to the end of our chain. Be sure your Soft Flex has enough air so that your beads can breathe and move...you don't want your Soft Flex to show...but you do want your beads to have just enough room to curve around your wrist. Once you're satisfied with your tension, crimp and cut away any excess wire. Cover with a crimp cover, for a polished and finished look.



### **Minute Marker 54:15**

Now let's finalize our measurements for this piece. Kate takes her strung beads and the attached 2 foot length of the Little Keyholes chain and wraps it around Emily's wrist to measure. If you're making this on your own at home, use your bracelet form! Clever Kate, she closes her toggle clasp so she can see just where the carved component will sit and which link of the chain she should attach to the wire loop she left open earlier. Be sure you've got the right measurement before you cut!



Use your Flush Cutter to snip the chain at the link next to the one you want to attach...and close 'er up! Finish that wire wrap from your carved component piece, and you are good to go! Wasn't that so quick and so easy? You'll be making them in droves!



### **Minute Marker 1:01:00**

Oh wait! We forgot to add an element! No biggie, this is an easy fix. In her original piece, Copper Penny, Kate wire-wrapped a Saturn bead between her strung beads and chain. In Silver Mint, which was created live, she forgot! She's fixed the piece post-show, but explains here how easy it is to fix this if you've done what she has. Simply cut the last link of chain that your wire guardian goes through, and wire-wrap your unit through the wire guardian on one end and through the chain on the other. Compensate for the extra length by removing a few links of chain the same length as your wire-wrapped bead unit.



And that's a wrap! It was nice to go over some of our basic beading techniques that we've covered over 2017 and wrap it all up into one nice neat little bracelet to start off 2018 with. Be sure to share your versions with us via email and in our [beadshop Community on FB!](#) We can't wait to see what you come up with.

So long, 2017, and dear friends...we'll see you next year! Happy beading!



Copper Penny



Silver Mint

## Links to Us...

[beadshop Facebook Page](#)

[beadshop Twitter Page](#)

[beadshop on Instagram](#)

[The Bead Table Blog](#)

[Newsletter Sign Up](#)

[FB Community-The Bead Table](#)

[info@beadshop.com](mailto:info@beadshop.com)

[kate@beadshop.com](mailto:kate@beadshop.com)

[janice@beadshop.com](mailto:janice@beadshop.com)

[emily@beadshop.com](mailto:emily@beadshop.com)

[drea@beadshop.com](mailto:drea@beadshop.com)

## Links to Events and More...

[Last Week's Facebook Live Broadcast: The Gatsby Necklace](#)

[Facebook Live Youtube Playlist & FB Live Archive Page on beadshop.com](#)

[Free Tip Friday YouTube Playlist & FTF Archive Page on beadshop.com](#)

[Bead and Button Show](#)

[Bead & Button 2018 Class Preview with Kate & Janice](#)

[Kate's Classes at Bead and Button](#)

## Links to This Project's Ingredients...

[Year End Wrap Projects and Recipe](#)

### [Copper Penny](#)

- 1 [Plain and Simple Toggle- Antique Copper](#)
- 1 [Spool Soft Flex .014- Satin Silver 10ft](#)
- 2 Ft [Keyholes Chain- Antique Copper](#)
- 1 Strand [Temple- Brass](#)
- 1 Strand [4mm Opaque Yellow-Copper Picasso Czech Fire Polish](#)
- 1 Strand [6mm Milky Alexandrite Moon Dust](#)
- 4 Czech [Saturn Beads- Mustard](#)
- 1 [Square Connector- Dyed Brown](#)
- 1 Spool [22G Craft Wire- Antique Copper](#)
- 1 Pkg [Crimp Tubes- Assorted Colors](#)
- 1 Pkg [Crimp Covers- Antique Copper Plate](#)
- 1 Pkg [Wire Guardians- Antique Copper](#)

### [Silver Mint](#)

- 1 [Plain and Simple Toggle- Antique Silver](#)
- 1 Spool [Soft Flex .014- Satin Silver 10ft](#)
- 2 Ft [Keyholes Chain- Antique Silver](#)
- 1 Strand [Little Shadows- Silver Plate](#)
- 1 Strand [4mm Nebula Wasabi Czech Fire Polish](#)
- 1 Strand [6mm Prairie Green](#)
- 4 Czech [Saturn Beads- Green Aqua](#)
- 1 [Infinity Clover- Gray Agate](#)
- 1 Spool [22G Craft Wire- Brushed Silver](#)
- 1 Pkg [Crimp Tubes- Assorted Colors](#)
- 1 Pkg [Crimp Covers- Antique Silver Plate](#)
- 1 Pkg [Wire Guardians- Antique Silver](#)

You will also want to have:

[Chain Nose Pliers](#), [Round Nose Pliers](#), [Bent Nose Pliers](#), [Maxi Shear Flush Cutters](#), [Nylon Jaw Pliers](#), [Xuron 4-in-1 Crimper](#)

## **Links to Learning, Products, & More...**

[Class Handouts and Skill Builders](#)

[SoftFlex 101](#)

[SoftFlex 101 Part 2](#)

[The Gatsby Necklace](#)

[How to Wire Wrap a Bead Unit Skill Builder](#)

[Using Crimps, Guardians, and Covers Skill Builder](#)

[Color Collections](#)

[Chain and Keyholes Chain](#)

[Clasps and Toggle Clasps](#)

[Czech Fire Polish Beads](#)

[Little Shadows Metal Beads](#)

[Temple Metal Beads](#)

[Daisy Spacer Beads](#)

[Heishi Metal Beads](#)

[Vintage Finds](#)

[Czech Glass Saturn Beads](#)

[Craft Wire](#)

[SoftFlex](#)

[Crimps and Finishings: Crimp Tubes, Crimp Covers, Wire Guardians](#)

[Nylon Jaw Pliers](#)

[Xuron Maxi-Shear Flush Cutters](#)

[Chain Nose Pliers](#)

[Bent Chain Nose Pliers](#)

[Round Nose Pliers](#)

[Xuron 4-in-1 Crimping Pliers](#)

### **Kate's Bracelets on this Broadcast:**

[Free Tip Friday: Braided and Knotted Bracelets with Leather Cord](#)

[Free Tip Friday: Sleek Stacker Bracelets](#)

[Free Tip Friday: Seed Beads on the Brain](#)