

Beadshop LIVE: 5.8.19 Tubular Herringbone Stitch



*With Kate Richbourg and
Emily Miller on Beadshop LIVE
Project by Emily Miller
Photography by Baranduin Briggs and
Karen Marshall
Episode Notes by Drea Carbone*

Just over a year ago Emily first introduced us to Tubular Herringbone when she made Candy Floss, a stack of bangles created with our April 2018 Monthly Mix, Rainbow Sherbert. As soon as Emily saw the mix she knew what she wanted to make! That idea came to fruition...but then we didn't revisit it. Silly us! Emily has steered us back to Tubular Herringbone (AKA Ndebele Stitch) this week with an extravagant necklace design full of little surprises tucked into the design.

It's so great to have Seed Bead School back, isn't it? Let's get ready to learn.

We have plenty of chit chat today...we've missed you, Em!
Skip to **Minute Marker 21:30** for the basics of this stitch,
and **Minute Marker 45:00** to hear more about today's color ways and design.

Minute Marker 12:30

We get started with a few book recommendations. It's Beadshop Book Club! Here's what Emily brought:

[Gemstones of the World](#), by Walter Schumann

[Design Language](#), by Tim McCreight

[Color Problems](#), by Emily Notes Vanderpoel

Minute Marker 18:00

Kate does a quick review of our many Brick Stitch pieces...here's a linked list!

[Brick Stitch Bracelets](#)

[Heart On My Sleeve](#)

[Lantern Earrings](#)

[Bead Embroidery](#)

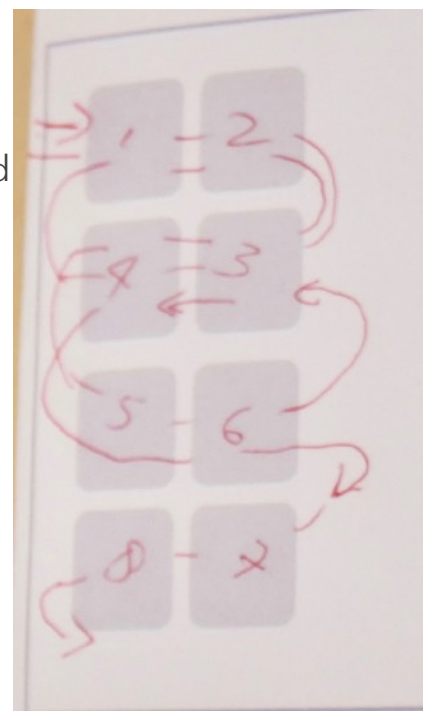
[The Dancer Earrings](#)



Minute Marker 21:30

Let's get to the stitches! Emily goes over the creation of [Into The Woods](#), her new necklace. Each section of this necklace was made on its own, and joined together later, Emily left about 8" of tail thread on each to help join each together. Emily has some trusty charts to help us understand the stitch, thanks, Em!

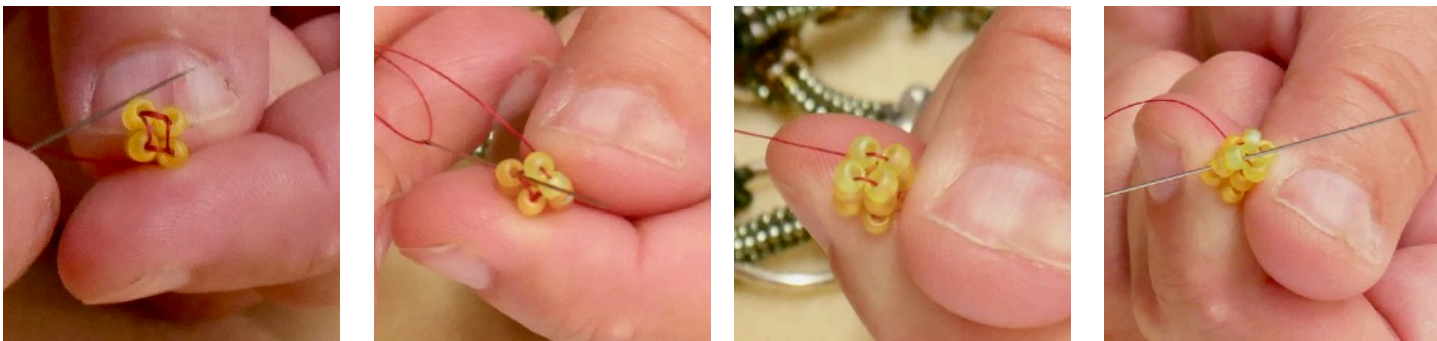
For the purposes of our demo, Emily is using a red thread with yellow and green beads. Much like Brick Stitch, we're starting with a "ladder" of beadwork. Emily takes four yellow beads, and leaves about a 8" tail. She folds the beads around so they are side by side, and needles back through her first two beads and pulls them around to form a little circle. Now, she goes down through her second and third beads, picks up a new pair of beads, circles around through the second and third beads again, and then back through the first and second beads. You should now have four little stacks of two beads each. Bring these rows around on themselves to form a tube and string through your last pair of beads, forming a little tube. Bring your needle up through your next stack (beads 3 and 4) so it's coming out of the top of your stacks.



Minute Marker 34:00

Kate's ready to learn more! But let's stick with the basics for a few...Emily brings her chart back into view. Now that we have our four rows in a tube it's time to add the next rows of beads which will sit at angles to make the "herringbone" shape.

Pick up two beads (Emily is now using pale green) and needle down into the top bead on the neighboring stack. Your two newest beads will sit at that side-by-side "wonky" angle. Bring your needle back up the very next top bead in your stack, and pick up two more beads. Go down through the top bead on the neighboring stack, then up again through the next stack and out through the top *two* beads.



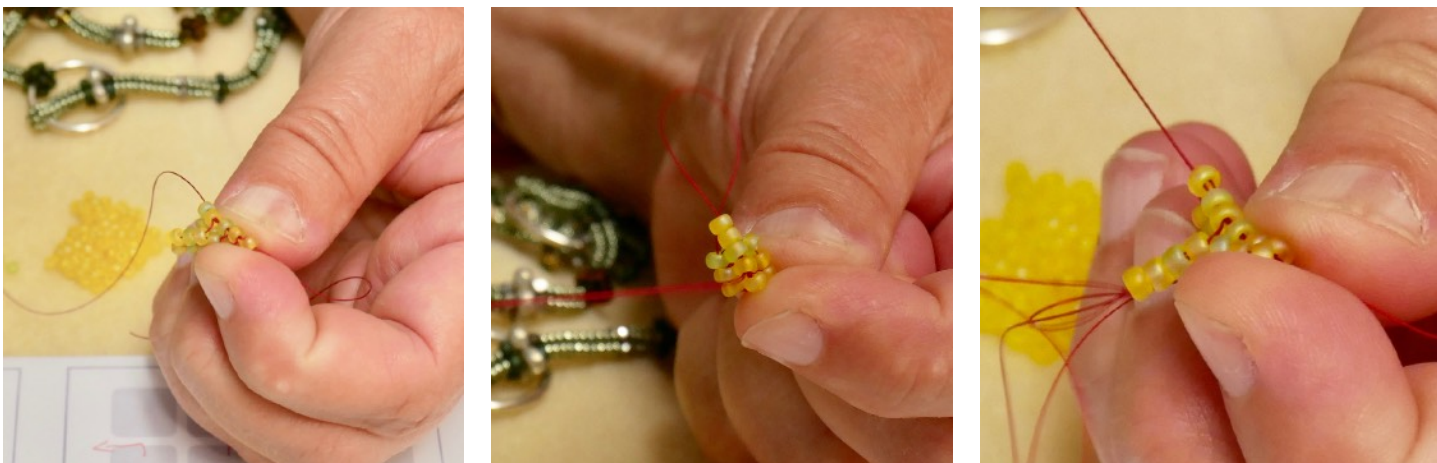
Minute Marker 37:45

Back to yellow beads...Emily picks up two (NOTE: it's always two with Herringbone!) and goes back down through her top bead *and* the row below. She repeats: Emily goes back up the next two beads, picks up two new beads, and down through the neighboring two beads, and back up and out the top again. You can see she has two "columns" of beads that are separating a bit.

Pick up two more beads, go down through two beads, go up through two beads.

Repeat, but this time you'll notice you come up through *three* beads.

It's not the easiest to catch on camera, but I'm hoping you can follow the thread path on these closeups that Baranduin took. It helps to watch the video a few times, too!



Minute Marker 41:30

Now Emily grabs 6/0 beads. She picks up two, and makes sure they are similar in size and shape. She again goes down through two beads and up through the next two. Repeat! This is the “step up” here where you’ll need to go up through three beads instead. Make sure each row of beads is even. And, see how those two columns that were totally separate are slowly coming together as you bead? The top few rows will always be separated... and they should be!



Now Emily adds a row of 8/0s again, just this one row of 6/0s makes a little visual interest and the next row of 8/0s cinches the tube back together.

Minute Marker 45:00

Now that you have the basics down, here’s how to join your smaller sections of Herringbone Stitch together. As we mentioned, Emily started off with several smaller sections created, leaving 8” of thread tails on either end of each section. You can see Kate’s sample she’s started here, she’s using the colors listed in the [Into The East](#) sample. You’ll also notice that Kate’s tube is bigger...she’s added four more rows to her tube, so she has 8 columns as opposed to Emily’s four. Both use Fireline, waxed, and singly (not doubled over). Emily’s colorway can be found on the [Into The Woods](#) page. It’s a little difficult to see the different color ways on the video, but in our photos (and in real life!) these colors are brilliant and different. See the patterning Kate has added by alternating colors for each row? She’s also added texture with bigger beads (Little Shadows) and smaller beads (Cut Delicas).



Minute Marker 1:01:30

Let's connect! Emily has several small sections of Herringbone that she's ready to combine into a finished necklace. First, she's going to make some loops to connect to some Hoop components. Emily strings six 6/0 beads and the hoop component on her thread, then needles back down into about three beads in her Herringbone stack. Next she ties a knot around the thread between her beads...goes back up through the beads, back through the loop she's created, and back down into her Herringbone again...and ties another knot around her thread between beads.

Next she "bridges over" into a neighboring stack to needle her way back to the top of the stack and out. She grabs six more beads, goes through the hoop again, and repeats the process to create a second loop. Each loop is exactly the same...six beads, threaded through twice and secured.

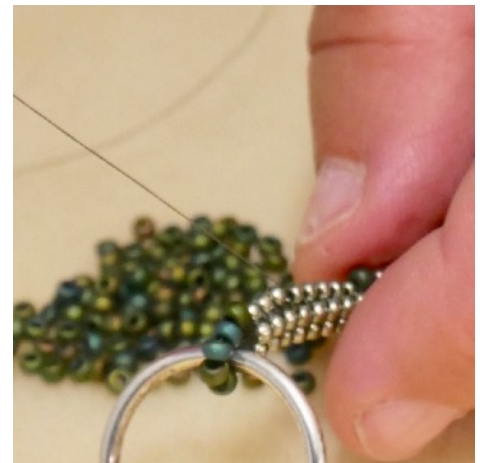
You can use other types of beads, other sizes...just adjust your loop size to make sense with the beads you're using.



Pick up beads and hoop and go back into your beadwork



Bring your needle around the thread between beads



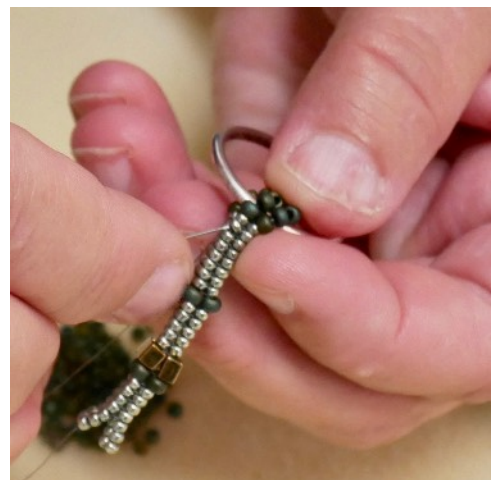
Tie a knot around the thread itself between the beads



Lather,
Rinse,
Repeat!

Secure each loop by making two passes through and tying knots after each.

TIP: If your needle won't fit, get a smaller needle!



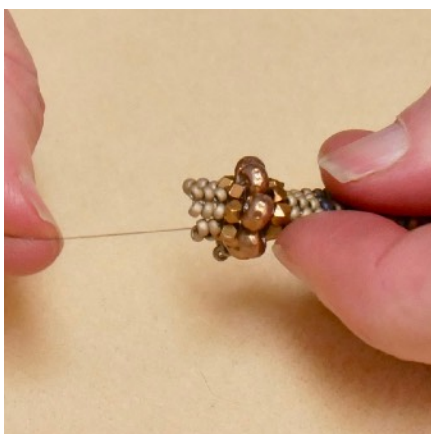
Minute Marker 1:00:00

We're revisiting Kate's sample now! Again, Kate's is a larger tube, and she's moving right along in her beadwork. She discusses a few ways she could connect her section of beadwork...taking small rings and attaching two, to create a "branch off" that could create a multi-strand necklace, or since her tube is so large she could string cord through it.



Minute Marker 1:04:00

What Kate wants to do, though, is add bigger beads like Emily showed earlier at Minute Marker 41:30. She's going to add Little Shadows and 6/0 Miyuki Baroque Pearls. Kate adds a row Little Shadows all the way around. Now it's time to add a row of the larger beads, the 6/0 Miyuki Pearls, then back down to Little Shadows and finally back down again to her 11/0 beads. Perfect!



Hit Pause! Before I continue on with the broadcast, I want to touch on what Kate continues to do here with her own sample. At **Minute Marker 1:24:30** we revisit Kate's sample and troubleshoot her larger bead section a bit, as it's a bit floppy. Emily suggests there may be some thread tension issues, but adding a small bead inside the tube to help support this section keeps it rounded...but it's what she's done off-air, after this episode aired that I want to show you now.

Kate really liked the idea of branching this off into 2 tubes, making a multi-strand necklace. Note how she took her larger tube of 8 and split it into two tubes of four. Smart cookie!

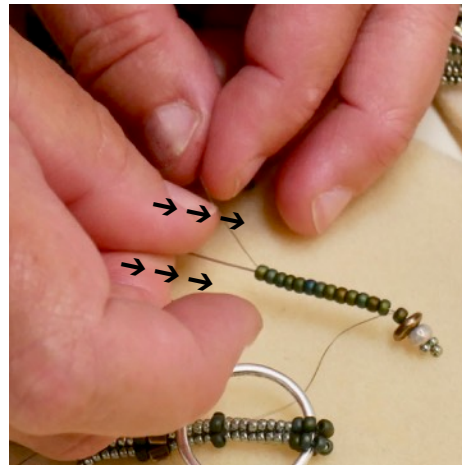
She also added a Circle of Bronze, which was a bit too small for loops like Emily made...so she created the loops on one side, then used the SAME center beads from her first pair of loops to go through from the second side. Now that's a bead hack!!



Minute Marker 1:12:00

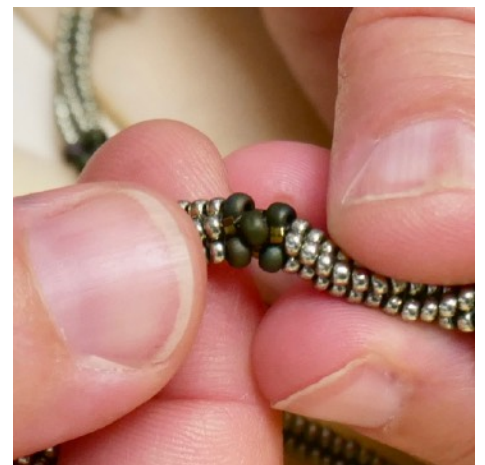
OK, back to the broadcast! Emily's going to show us how to make some dangles and decor for the necklace. Just add a little pizzaz!

Emily makes a cute little drop using 14 (but you do you!) 8/0 beads, followed by a spacer, a baroque pearl, and three 11/0s. Those three 11/0s will become a picot...go back up through the pearl and spacer, pulling so those three 11/0s form a cute little end. Next, go back through your 8/0s the same way you went before, in order to form a loop. be sure to go around your hoop component or whatever you want to add this little bauble to. Tie off your thread in a double knot and add a dab of glue.



Emily also makes a similar little loop, this time skipping the drop and picot end to make just a nice ring of beads, a little "donut" as Emily says. So pretty! Another little loop is made to hold a Make A Point! charm from...your options are endless.

She also points out a section where she alternates the beads she's picking up...instead of picking up two of the same bead she picks up one 8/0 and one 11/0, which creates a kind of checkerboard pattern (see below, far right). Very cool!



Here's the Project Map layout of Into The Woods, it's worth it to pore over, zoom in, and see all the patterns and ideas Emily has thrown into it!



And that's all folks! This whole necklace is just Herringbone Stitch over and over again, with different sized beads here and there, different colors...all to create a multitude of patterns and textures in one necklace. Emily calls it "opulent," and she's so right!



Here's Kate and Emily's selfie from the beginning of the broadcast. These two are too much!!

Kate has been beading away, working on her Into The East sample...keep an eye on the Project Page for that finished sample...little by little she's working on it. I can't wait to see the finished piece!



Links to Events and More...

- Last Week's Episode: [Brick Stitch Earrings](#)
- [Beadshop LIVE Youtube Playlist](#)
- [Beadshop LIVE Archive Page](#)
- [Free Tip Friday YouTube Playlist](#)
- [FTF Archive Page](#)
- [The Journey Bead Retreat](#)

Links to Us...

- [beadshop YouTube Channel](#)
- [beadshop Facebook Page](#)
- [beadshop Twitter Page](#)
- [beadshop on Instagram](#)
- [The Bead Table Blog](#)
- [Newsletter Sign Up](#)
- [FB Community-The Bead Table](#)
- info@beadshop.com
- kate@beadshop.com
- janice@beadshop.com
- drea@beadshop.com

Links to This Project's Ingredients...

[The Dancer Earrings](#) and [Recipe](#)

Into The Woods

- 1 Spool [Fireline 4lb- Smoke](#)
- 2 Tubes [11-4215 Duracoat Galvanized Sea Green 11/0s](#)
- 1 Tube [11-593 Dark Beige Ceylon 11/0s](#)
- 1 Tube [DBC-0011 Metallic Olive Cut 11/0 Miyuki Delicas](#)
- 1 Tube [8-2066 Matte Metallic Teal Iris 8/0s](#)
- 1 Tube [6-93956 Baroque Pearl Silver 6/0s](#)
- 1 Tube [SB3-457 Metallic Dark Bronze](#)
- 1 Strand [Little Shadows- Antique Silver Plate](#)
- 1 Strand [Shadows- Antique Silver Plate](#)
- 1 Pkg [Happy Donuts- Antique Brass](#)
- 1 Pkg [Tierra Daisy Spacers- Gold](#)
- 3 [Medium Hoops- Antique Silver](#)
- 2 [Mini Hoops- Antique Silver](#)
- 1 [Make A Point Charm](#)
- 1 Pkg [1.5" Head Pins- Antique Brass](#)



Into The East

- 1 Spool [Fireline 4lb- Smoke](#)
- 1 Tube [11-152FR Matte Transparent Grey AB 11/0s](#)
- 1 Tube [11-2091 Matte Metallic Tarnished Silver 11/0s](#)
- 1 Tube [6-93955 Baroque Pearl Antique Brass 6/0s](#)
- 1 Tube [DBC-0022 Metallic Dark Bronze Cut 11/0 Miyuki Delicas](#)
- 1 Tube [SB3-2001 Matte Gunmetal Miyuki Cubes](#)
- 1 Strand [Little Shadows- Antique Brass](#)
- 1 Pkg [Circle of Bronze](#)
- 1 [Pyrite Pi- 30mm](#)
- 1 [Space Buddha- Grey Agate](#)



You will also want to have...

[Size 10 Beading Needles](#), [Beeswax](#),
[Thread Clippers](#), [Foam Beading Mats](#),
[Chain Nose Pliers](#) and [Bent Nose Pliers](#)

