

facebook LIVE: 2.21.18

Teardrop Boho Earrings



Project by Emily Miller
With Kate Richbourg and
Emily Miller on FB Live
Episode Notes by Drea Carbone
Photography by Baranduin Briggs and Karen Marshall

With our new hoop components just arriving from Nunn Design we dove right in to creating something fabulous with them! We love these wire frames, they're beautifully crafted and there's so much you can do with them. Kate and Emily use wire and seed beads, but let your imagination run wild, and enjoy!

Our Chit Chat today is worth the watch, the gals talk about common successes and failures with selling your work, and it's a nice little pep talk!

Of course If you want, you can bypass the chit chat...

Skip to **Minute Marker 16:20** to get right to the learning.

Happy beading!



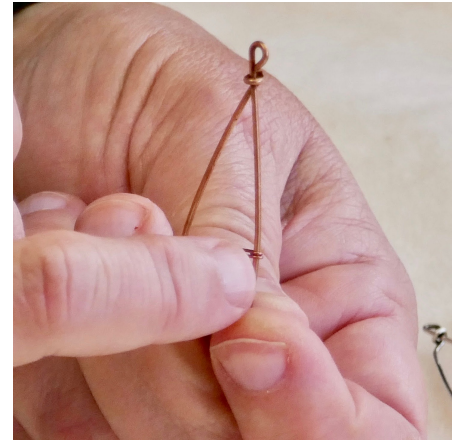
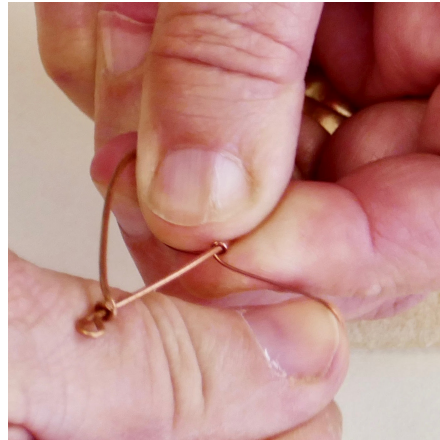
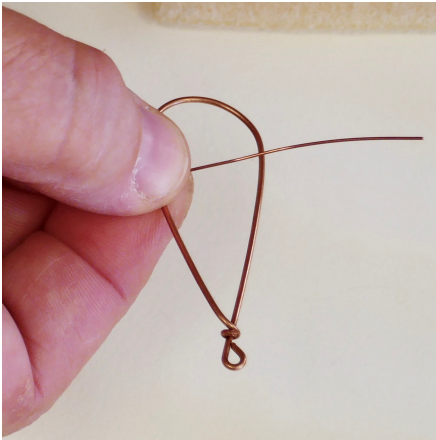
Minute Marker 16:20

Becky Nunn is a really interesting designer who started in the paper world, creating components for scrapbooking and moved into the world of metal and jewelry. We are starting to carry a number of items from her, including the hoop frames we'll be using today.

We'll be using all 8/0 seed beads today and doing a few variations of wiring them onto these frames. Emily points out that you could fill the entire frame with beading, but leaving a little negative space is also impactful.

Emily chose 24G wire to use with this project. It fits in our 8/0 seed beads and makes nice, sturdy wraps without overpowering the frames themselves. If you choose to use 11/0s or Delicas, perhaps consider sizing your wire down to a 26G, purely for aesthetic reasons. Emily works with lengths about 14" long, and wired one strand across at a time. Using one long length of wire and stringing back and forth makes for a lopsided look, so Emily chose to make one "stripe" at a time.

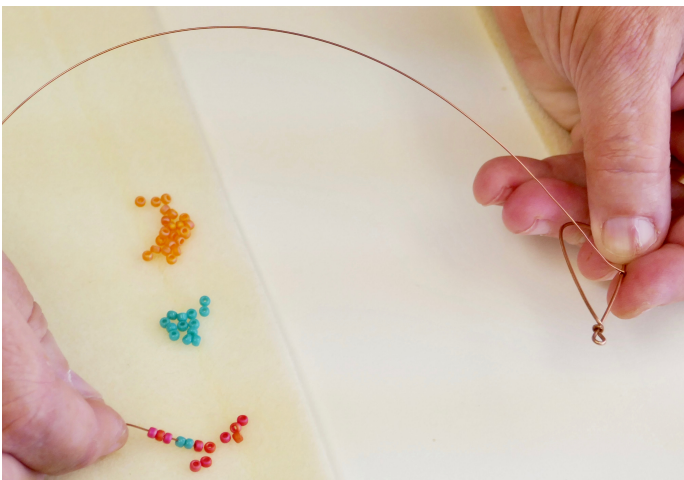




Minute Marker 30:00

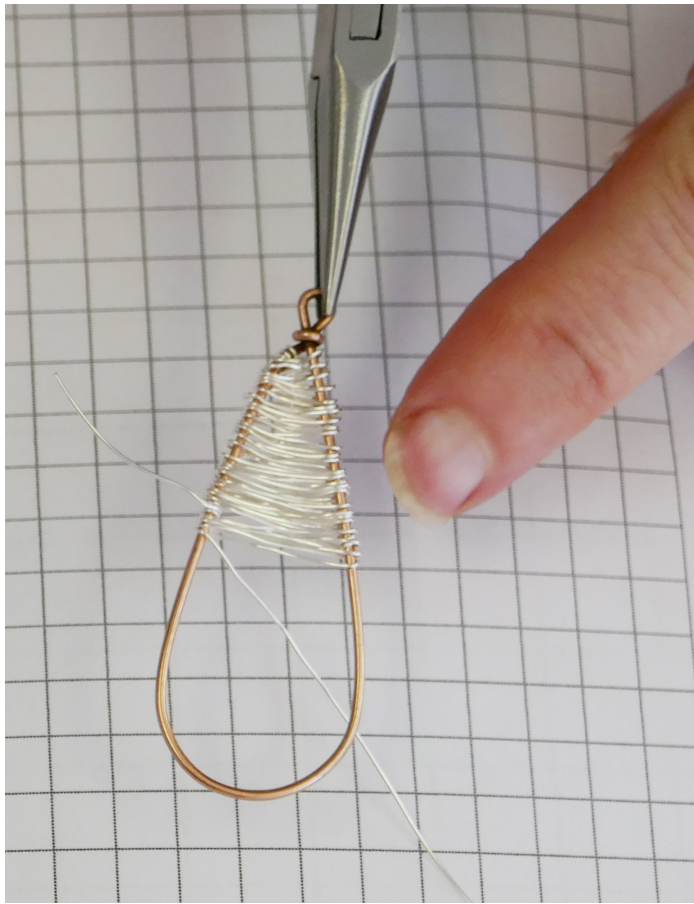
Use Nylon Jaw Pliers to straighten and work harden the wire a bit. Working with the Sweet Beauty sample, Emily chooses to start in the middle of her frame (another reason to do one stripe at a time, rather than zig-zag back and forth) and work her way up and down from there.

Holding the wire firmly in place on top the frame, she brings her tail around the frame and creates a two-wrap coil, then snips her tail off. With the long end, she adds her pattern of seed beads.



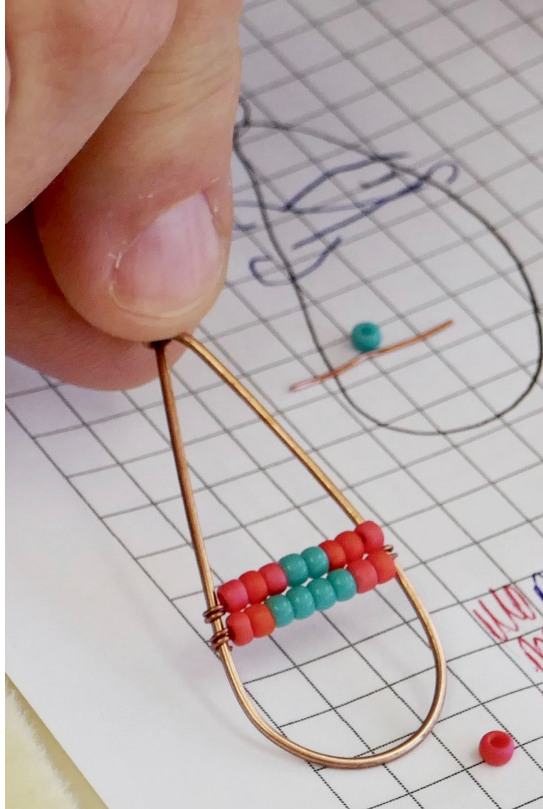
Once she has strung on the beads she wants, Emily fits them inside the frame and closes the other end of her stripe the same way she started, with another two-wrap coil. To keep her work looking uniform Emily makes sure to wrap from the same side of the frame with each stripe she adds, so the wire starts on top of the frame and coils around twice in the same direction.

When you add your second stripe, be sure to start the wire once again on top of the frame, coil around twice, then add your beads, and close with a coil starting on top of the frame. Use your chain nose pliers to keep your coils aligned and tails tucked



Minute Marker 38:00

Kate shows what she has been working on, a continuous wrap of wire, sans beads (for now!). Emily explains a bit more in-depth why she's not doing a zig zag. Kate's wire-only sample is basically using the Infinity Stitch to create a series of figure eights around and around the wire frame, filling it in. Note how her wires cross each other in the middle, it's more of a woven piece. Emily's samples, however, with multiple rows of beads next to each other, don't look uniform when done in this pattern. When Kate adds a row of beads to her sample she does it in the same way Emily does, with her entire row sitting on top of the frame.



Minute Marker 51:15

Emily shows how she makes her curved stripes of beads in the Metal Beauty sample. She starts the same way, with wire across the top of the frame, coiling it in place, and snipping the tail. Emily strings 6 beads on, and curves her beaded wire just using her fingers. Then she closes the open end with a coil...oh no! She loses the curve a bit... oh, but who's the boss of that wire?? Emily is! She just moves that wire right where she wants it to go...presto!

As Emily adds her second wire stripe she accidentally slides her first stripe off to the side...and that a happy accident! This looks cool! Now Emily is creating this off-set curve and it looks fantastic.

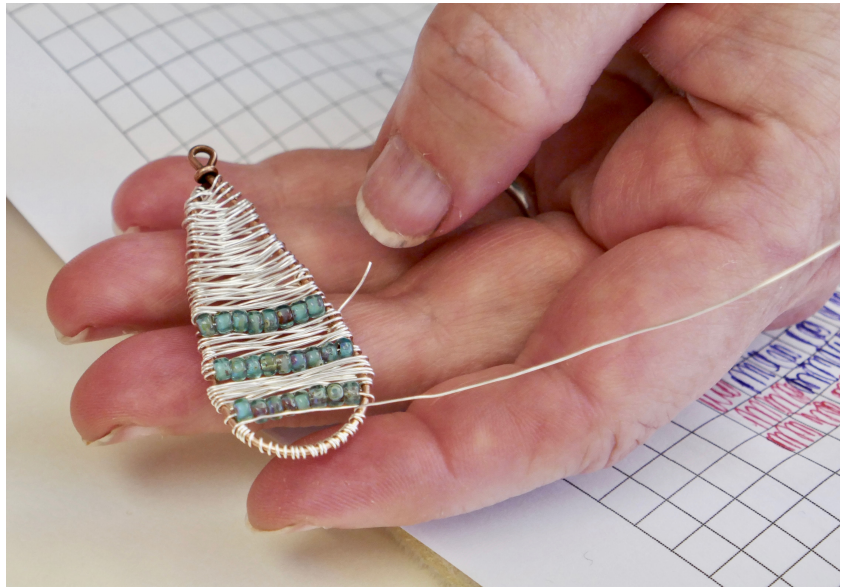
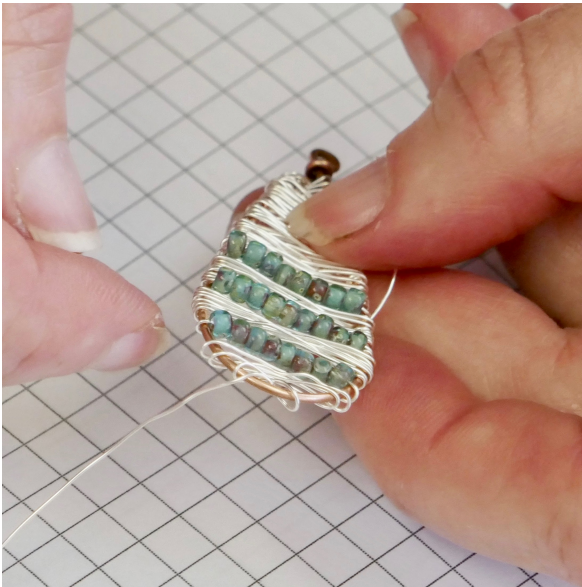
Minute Marker 59:00

Janice asked Emily to show why we aren't doing a zig-zag method with one continuous piece of wire. Here's why! Emily demonstrates on a round hoop with orange seed beads...I used this photo at the right because you can really see it...note how these stripes do not sit evenly next to each other? It's because the wire is coming from the back of the hoop on the second stripe, but the front on the surrounding stripes. It really does make a difference!



Minute Markers 57:30 and 1:05:30

Meanwhile, Kate's been having some troubles finishing her "infinity" style weave on her teardrop frame...down towards the bottom she's not liking how the wire looks and it's driving her a little nutty! She undoes her work (seen below on the left) and instead wire wraps around the curve of the frame itself rather than try to fill in the negative space. She adds a few final infinity wraps, using her coils around the frame to help keep her wire in place.



Look at all the great designs we've got here! How fun!! The possibilities are endless...work with chain, briolette danglers, even fiber...what will you create?? We can't wait to see what you make!



Links to Us...

[beadshop Facebook Page](#)

[beadshop Twitter Page](#)

[beadshop on Instagram](#)

[The Bead Table Blog](#)

[Newsletter Sign Up](#)

[FB Community-The Bead Table](#)

info@beadshop.com

kate@beadshop.com

janice@beadshop.com

emily@beadshop.com

drea@beadshop.com



Links to Events and More...

[Last Week's Facebook Live Broadcast: Freeform Wire Heart](#)

[Facebook Live Youtube Playlist & FB Live Archive Page on beadshop.com](#)

[Free Tip Friday YouTube Playlist & FTF Archive Page on beadshop.com](#)

[Bead and Button Show](#)

[Bead & Button 2018 Class Preview with Kate & Janice](#)

[2018 Best of Both Worlds Beat Retreat Info](#)

[Interweave.com Katie Hacker Article](#)

[Beads Baubles and Jewels](#)

[Nunn Designs Video from Tucson](#)

Links to This Project's Ingredients...

[Boho Earrings](#)
[Recipe](#)

Metal Beauty

2 [Drop Hoops- Antique Gold](#)
1 [Spool 24G Wire - Gold Tone](#)
1 [Tube 8-4201 Duracoat Galvanized Silver](#)
1 [Tube 8-4204 Duracoat Galvanized Champagne](#)
1 [Tube 8-4206 Duracoat Galvanized Muscat](#)
1 [Pair Earwires - Gold Filled w/ 3mm Bead](#)



Marbled Beauty

2 [Drop Hoops- Antique Silver](#)
1 [Spool 24G Wire - Silver Tone](#)
1 [Tube 8-4515 Picasso Chartreuse Matte](#)
1 [Tube 8-4506 Picasso Transparent Olivine](#)
1 [Tube 8-4513 Picasso Red Garnet Matte](#)
1 [Pair Earwires - Sterling Silver w/ 3mm Bead](#)



Sweet Beauty

2 [Drop Hoops- Antique Copper](#)
1 [Spool 24G Wire - Antique Copper](#)
1 [Tube 8-138FR Matte Transparent Orange AB](#)
1 [Tube 8-407FR Matte Op. Vermillion Red AB](#)
1 [Tube 8-412 Opaque Turquoise Green](#)
1 [Pair Earwires - Niobium Antique Copper w/ Coil](#)



*You will also want to have: [Nylon Jawed Pliers](#),
[Xuron Maxi Shears](#), and [Chain Nose Pliers](#)*

Links to Learning, Products, & More...

[Class Handouts and Skill Builders](#)

[Main Project Page](#)

[Beadshop Recipes Page](#)

[FB Live: Wire 101 With Emily 1.31.18](#)

[FB Live: Wire Wrapping 1.29.17](#)

[Free Tip Friday: Embellished Hairpins](#)

[Branch Wire Necklace Class Handout](#)

[Infinity Stitch Skill Builder](#)

[Netted Bead Project Page](#)

[Beads and Gems](#)

[Seed Beads](#)

[8/0 Seed Beads](#)

[11/0 Seed Beads](#)

[Delica Seed Beads](#)

[Monthly Seed Bead Mixes](#)

[Components](#)

[Nunn Designs Components](#)

[Craft Wire](#)

[Ear Wires](#)

[Head Pins and Eye Pins](#)

[Tools](#)

[Chain Nose Pliers](#)

[Xuron Maxi-Shear Flush Cutters](#)

[Nylon Jaw Pliers](#)



The first question asked each week on Facebook Live...

"What are you wearing?"



Above: Emily's necklace, a beaded chain made from a strand of irregular Roman beads. By choosing to use her wire in a very consistent way made for a more uniform necklace...it's perfect!

Below: even Emily's shirt is a chain! Haha!!



Above: Kate's earrings, made with Emily's Netted Beads, 8mm Rondelles- Light Colorado, and links from one of our favorite chains, My Fair Lady Chain in Antique Silver.

Below: Kate's ring, handmade by the metal master herself. It features a Kingman Turquoise stone at the center, flanked by sterling stamped accents and two Ruby cabochons.

