

facebook LIVE: 10.04.17

Right Angle Weave Part Two



Facebook LIVE with Kate Richbourg and Emily Miller. In this episode, our fearless instructors show us how to embellish the Right Angle Weave Base we created last time. Emily also shares the steps to adding a clasp. We hope you enjoy watching the Facebook LIVE Episode and that these notes add learning and inspiration beyond just watching the video!



This week, rather by coincidence, our two designers both wore black and white stripes. Kate spoke of a favorite blog, [Advanced Style](#), by Ari Seth Cohen, where black and white play such a predominate role. I (Janice) could not resist the side-by-side photos of the timeless, classic appeal of women with style...at every age! Well done!

And if you are new to Right Angle Weave, please watch [Part One, Basics of Right Angle Weave](#) and download [Episode Notes](#) from last week.



[Part One is the RAW base](#)

[Part Two is Embellishment](#)

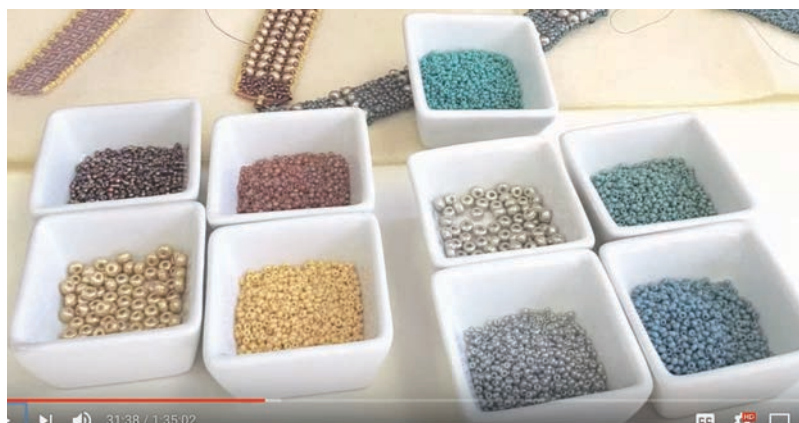
Kate and Emily have their usual chat about upcoming events, viewer mail, and about this and that.

Minute Marker 12:00 Project Learning Begins:

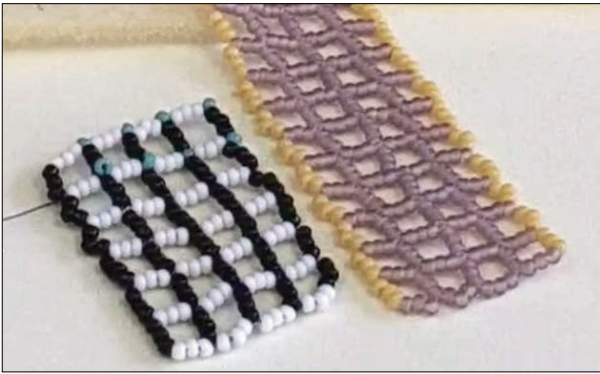
Now that we know how to create a Right Angle Weave (RAW) base, we're ready to embellish, decorate, and style it.



Making a sampler is how Emily likes to teach students how to RAW. It makes so much sense to just try some stitches out and find what you like. Emily is a strong proponent of using the supplies you have at home and learning by making mistakes.



The base uses two 11/0 Miyuki Seed Beads and the added garnish is done with 6/0 Miyuki Baroque Pearls and a contrasting 11/0 seed bead.



Whatever base you start with, Emily wants us to remember that as we begin to decorate it, the Right Angle "Circles" really start looking like squares. This happens because the reinforcing of the thread through the beads add more body to the shape.

To go quickly to the spot in the video where you want to review a section, refer to these Minute Marker Notes:

Minute Marker 11:57- Learning begins.

15:01- Overview of Embellishment.

15:35- RAW Samplers are discussed. Corner Stitch technique is shown with a Delica in the corners.

18:38- Longer fringe coming out of the corner.

19:34- Pattern of pyramid/flowers is shown.

21:40- Emily shows the charts for this week's project and reminds us to save the clasp for last!

23:00- Path for Embellishment using the Zig Zag method.

24:00- Embellishing flowers: you can go in any direction. And, here is where they talk more in-depth of leaving windows or squares unadorned.

28:20- Blank chart can be filled in. Optional bead choice: 11-4479

33:39- You can embellish using wire, suede, silk...almost anything! Do this by weaving it back and forth through the windows.

34:27- Emily and Kate reiterate that the squares don't have to be squares. You can make rectangles (3 on 1 side, 2 on the other side).

35:00- Tie on a new cord

37:05- Measuring length. Your beadwork should almost touch when you put it around your wrist before you add the clasp. The clasp will add about 1-1/4 inches, depending on the clasp.

38:54- Avoid thread showing and slipping out.

40:26- Half hitch. Make 2 knots to secure and then go right and left in your pattern until you get where you want to start embellishing.

47:09- Flower Embellishing (5 in the square). Also demo of backing out the stitch eye of the needle first. The "mistaken" lilac color seed bead that Emily used was 11-142FR Matte Transparent Smokey Amethyst AB.

50:22- How to break out a bead using an awl. Very essential trick!

52:40- Demo of flower pattern.

54:50- Putting a bead in the corner.

57:50- Super Shore Fringe with a 6/0 and 11/0.

1:01:00- Fish Scales.

1:05:00- Let's put the clasp on. See how Emily doubles her thread when she needs to.

1:09:00- Check clasp is as you would like it.

1:10:00- Ending with a knot in the middle of a row. Go through a few more beads, turn a corner, and one more knot. Repeat for the other side of the clasp.

1:11:48- Knotting it off.

1:14:53- Top Things to Remember:

1. The beads, as they turn the corners in your RAW base, want to be circles, not squares. You're going to "influence" them to become squares. You're in charge! And tension will tighten them up.
2. You don't want to see thread if you don't have to...so don't stitch too loose or too tight.
3. Only need 2 knots to add a new thread or end it. Bury that thread as deep in the project as possible. Don't end your thread coming out a bead on the outside row.
4. Fireline in 4lb is super strong and ideal for RAW.
5. An English Beading Needle Size 12 is perfect for this stitch and size beads, but if you need to learn on a Size 10, that's fine.
6. Marker 1:19:35-Don't use beads that will chip or flake!
Replacement orange is 11-138FR.

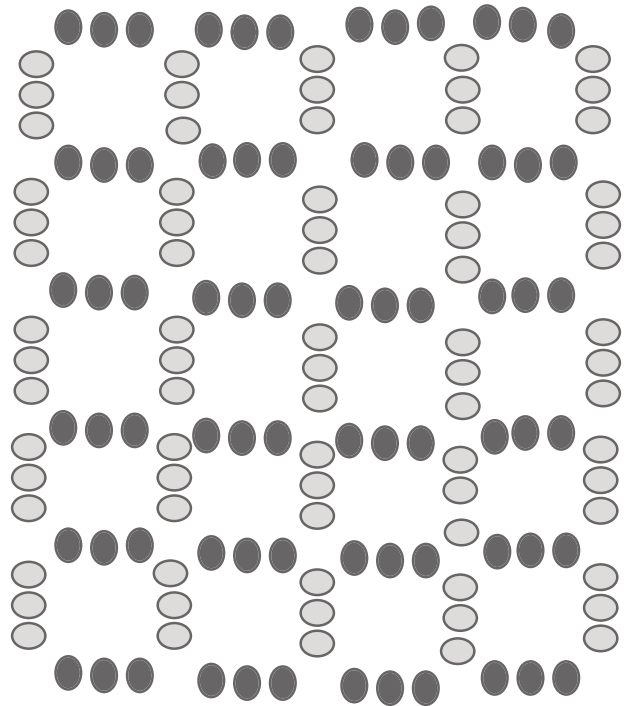
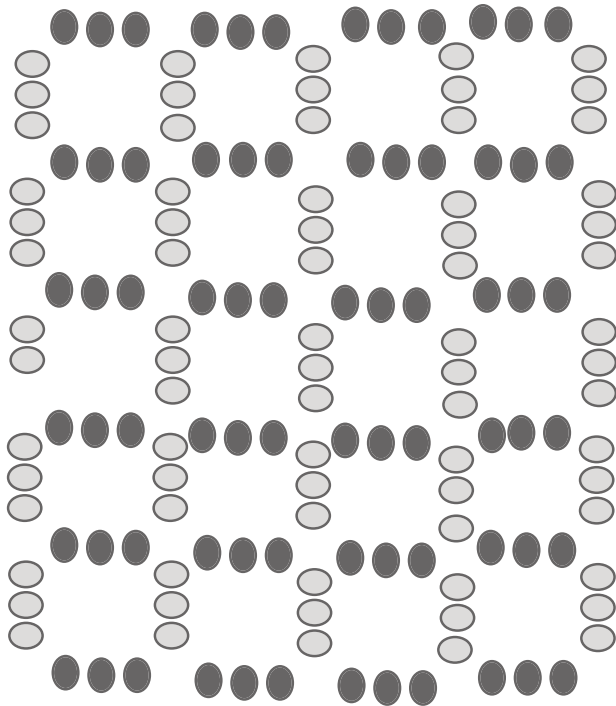
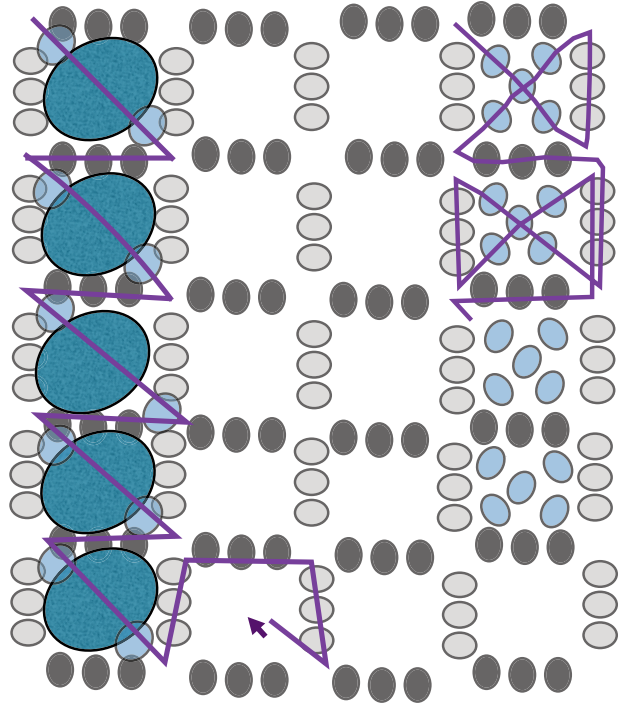
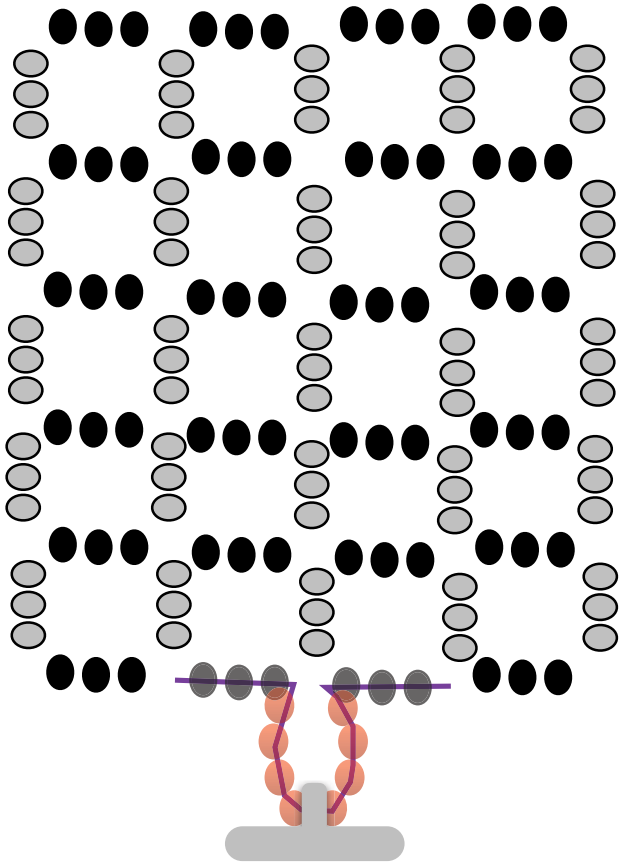


Here is the beaded lamp shade that inspired Emily to create her first RAW, from the movie Bull Durham. How amazing! So glad you saw that movie!

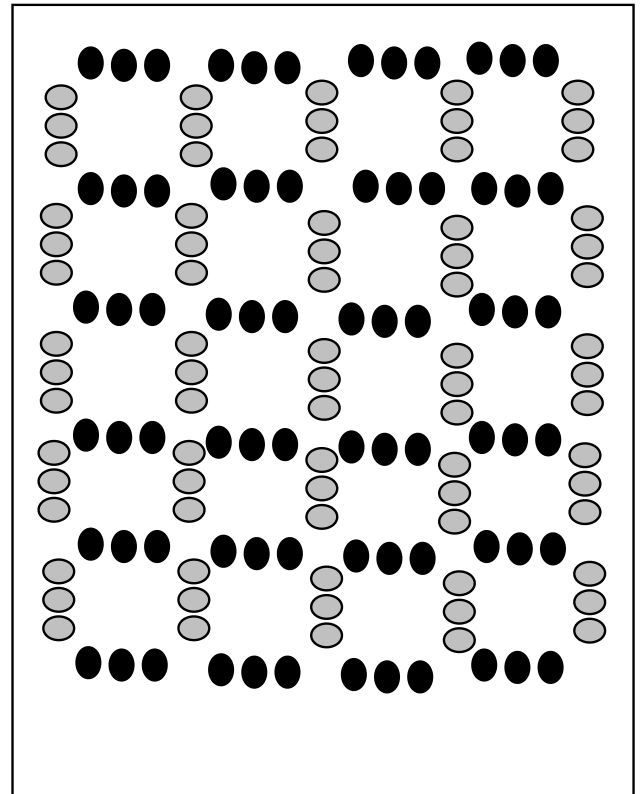
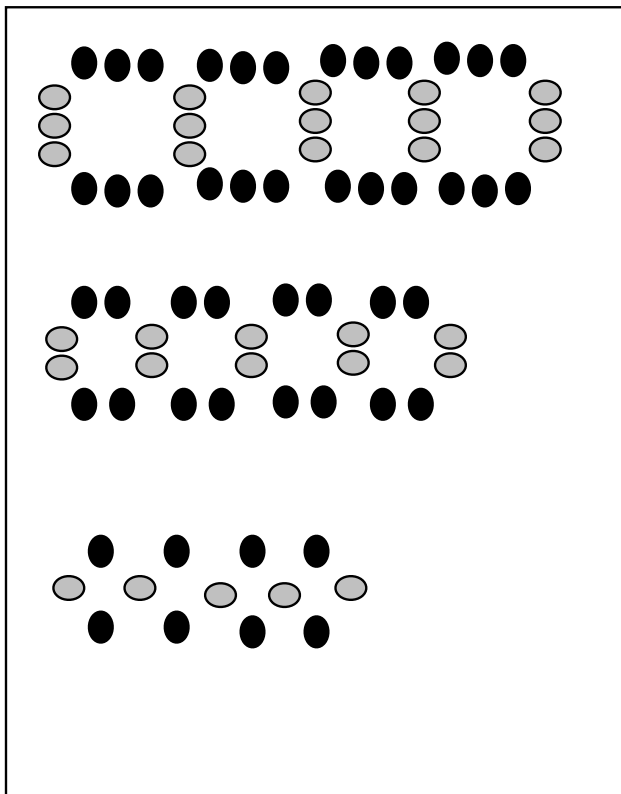
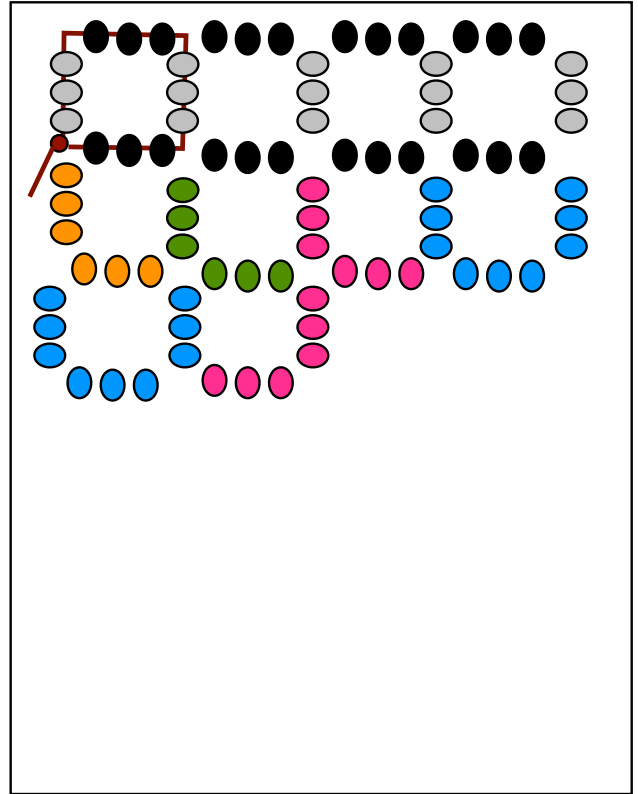
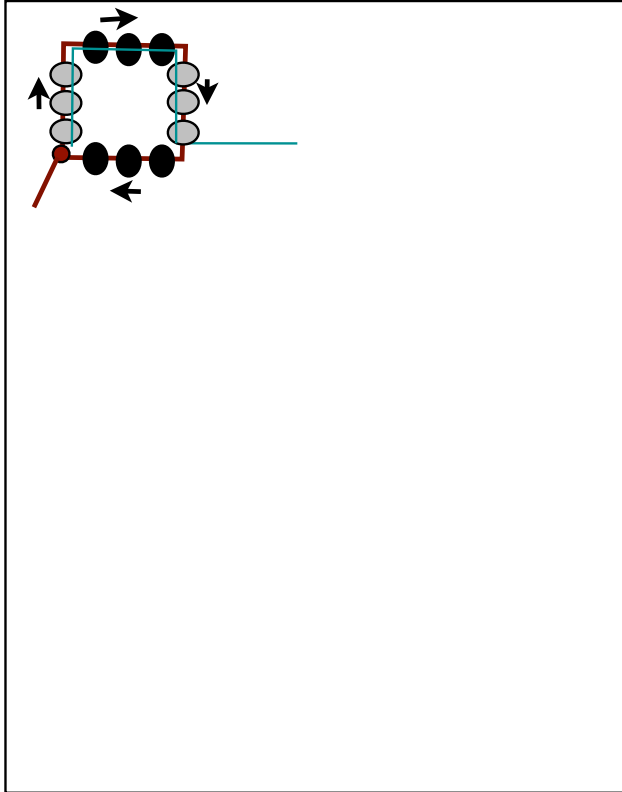


Also, be sure to watch [Free Tip Friday RAW](#), when Kate takes the [11/0 Gilding Matte Seed Bead](#) and turns it into a beaded component with the [October Monthly Mix](#). It's amazing! And you can do it, too!

Here are RAW Charts Emily focused on this week:



Here are RAW Charts from Part One RAW.





We hope you enjoyed watching and beading along with Emily and Kate. And we look forward to seeing you next time on Facebook LIVE. Every Wednesday and Friday, Kate shares another project, more inspiration, and designers with incredible knowledge and talent. It's live at 10:30am Pacific Time (1:30 Eastern Time) on Facebook. So, be there and happy beading!

~ Janice

Please Note: Emily's charts and Episode Notes may be reproduced for personal use only. They may not be resold or used for instruction without written permission from beadshop.com

Links to Us...

[beadshop Facebook Page](#)

[beadshop Twitter Page](#)

[The Bead Table Blog](#)

[Newsletter Sign Up](#)

info@beadshop.com

kate@beadshop.com

janice@beadshop.com

emily.beadshop@gmail.com

drea.beadshop@gmail.com

Links to Events...

[Last Week's Facebook Live Broadcast: Right Angle Weave Part 1](#)

[Previous Facebook Live Broadcasts](#)

[Facebook Live Youtube Playlist](#)

[Free Tip Friday Youtube Playlist](#)

[Free Tip Friday 10.6.17 RAW + Monthly Mix](#)

[Free Tip Friday 9.29.17: Leather + Chain + Green Girl](#)

[Free Tip Friday 9.22.17: Making Wire Beads With Kate](#)

[Bead Fest Tacoma](#)

[Kate's Class Schedule at Bead Fest Tacoma](#)

[Tiara Challenge](#)

Links to This Project's Ingredients...

[Right Angle Weave Project Page](#)

Austin

1 [Copper Forest Secrets Toggle Clasp](#)

1 Spool [Crystal Fireline 4LB](#)

1 Tube [Matte Transparent Topaz AB 11/0 Seed Beads](#)

1 Tube [Silver Lined Dark Topaz AB 11/0 Seed Beads](#)

1 Tube [Duracoat Opaque Banana 11/0 Seed Beads](#)

1 Tube [Gold Miyuki Baroque Pearl 6/0 Seed Beads](#)

1 Pkg [Size 12 Beading Needles](#)

New York, New York

1 [Silver Black Forest Secrets Toggle Clasp](#)

1 Spool [Smoke Grey Fireline 4LB](#)

1 Tube [Duracoat Opaque Moody Blue 11/0 Seed Beads](#)

1 Tube [Duracoat Opaque Eucalyptus 11/0 Seed Beads](#)

1 Tube [Silver Gray Ceylon 11/0 Seed Beads](#)

1 Tube [Silver Miyuki Baroque Pearl 6/0 Seed Beads](#)

1 Pkg [Size 12 Beading Needles](#)

Links to Products & More...

[Class Handouts and Skill Builders](#)

[Seed Bead School](#)

[How to Silk Wrap Skill Builder](#)

[Tricks to Looming](#)

[October Seed Bead Mix: Cinnamon Spice](#)

['Just In' Section](#)

[Green Girl Studios Collection](#)

[Seed Bead School Inna Kit](#)

[Delica Seed Beads - 11/0 Seed Beads - 8/0 Seed Beads - 6/0 Seed Beads](#)

[Cube Beads - Bugle Beads - Baroque Pearls](#)

[11-4514 Picasso Seafoam Green Matte 11/0 Seed Beads](#)

[11-412 Opaque Turquoise Green 11/0 Seed Beads](#)

[11-142FR Matte Transparent Smoky Amethyst AB 11/0 Seed Beads](#)

[11-138FR Matte Transparent Orange AB 11/0 Seed Beads](#)

[Heishi Metal Beads](#)

[Pearls](#)

[Gem and Earth Stones](#)

[Tribal and Trade Beads](#)

[Tide's Out Glass Beads](#)

[Compassion Suede](#)

[Charms](#)

[Toggle Clasps](#)

[FireLine](#)

[KO Thread](#)

[Beeswax](#)

[Seed Bead Needles](#)

[Xuron Thread and Cord Scissor](#)

[Awl For One Tool](#)

[Beadsmith Knotting Tweezers](#)

[Foam Bead Mats](#)

[Metal Triangles](#)

[Organza Gift Bags](#)