

# facebook LIVE: 9.27.17

## Right Angle Weave Part One

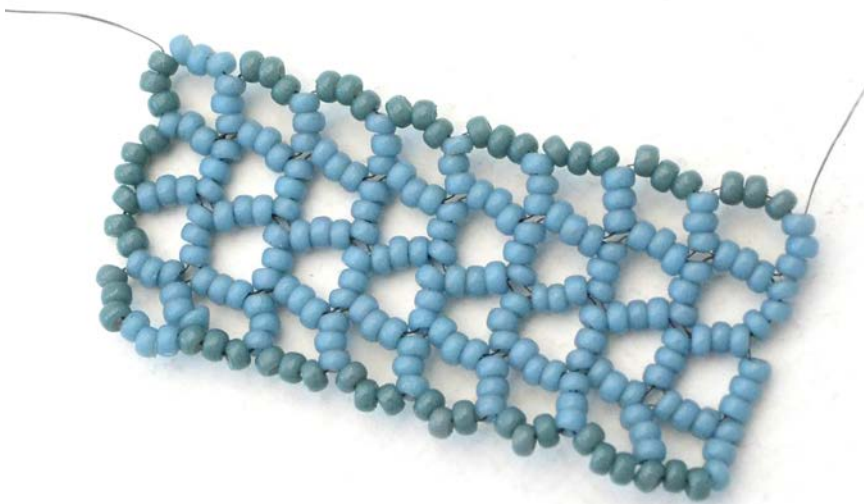


Facebook LIVE with Kate Richbourg and Emily Miller. In this episode, our designers discover the joys and challenges of this tried and true seed bead stitch, Right Angle Weave. We hope you enjoy watching the Facebook LIVE Episode and that these notes add learning and inspiration beyond the video.



Well, the bead queens are back for another week of amazing learning. Emily is an expert in bead weaving and classic seed bead stitches and Kate is her novice. There are many applications for Right Angle Weave (RAW). As you watch, you'll see how the simplicity of the steps builds a base that you can then embellish.

This is a two-part class. This week, we are just focusing on the base stitch. Part Two, airing 10.4.17, is embellishment.

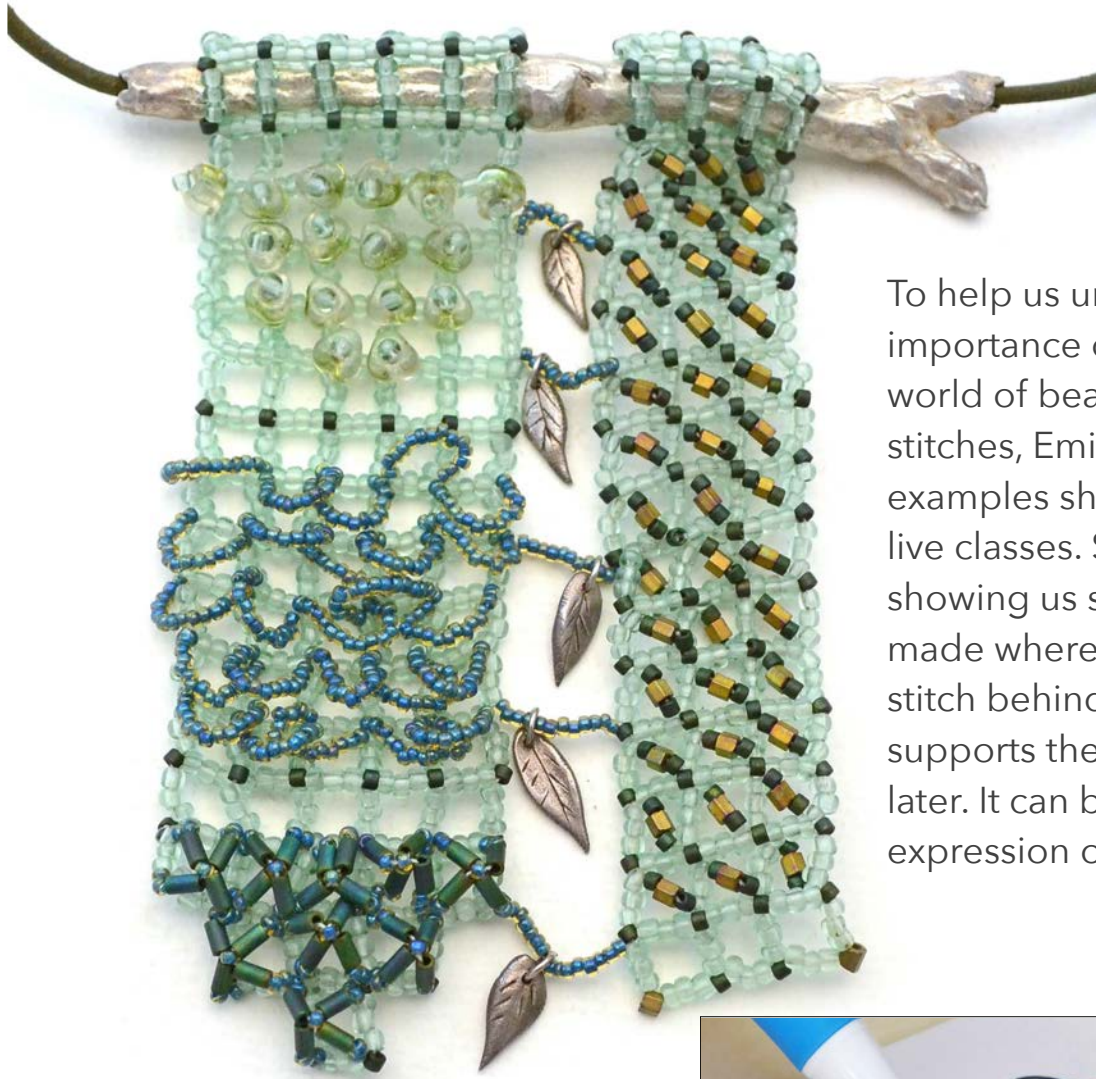


Part One is the RAW base



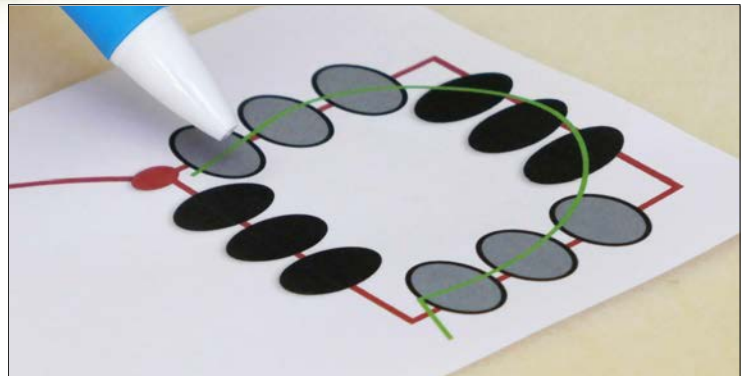
Part Two is embellishment

It's true, Kate and Emily love what they do and it shows! If you want to skip the chit chat and go straight to the learning, it begins around **Minute Marker 13:00.**



To help us understand the importance of RAW in the world of bead weaving stitches, Emily shares some examples she has done in her live classes. She begins by showing us samplers she has made where the simple RAW stitch behind the decoration supports the weaving done later. It can become an expression of art.

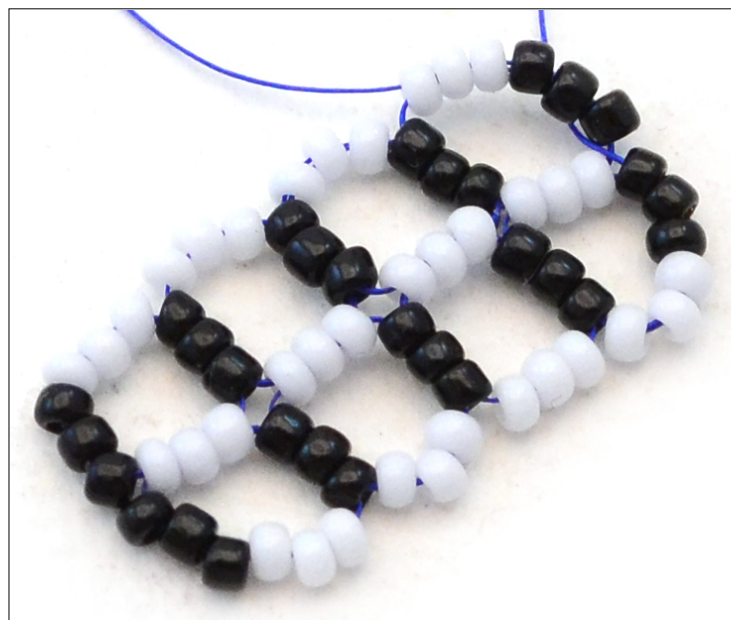
It all begins with twelve seed beads turning corners (right angles), three beads at a time, to form a square!



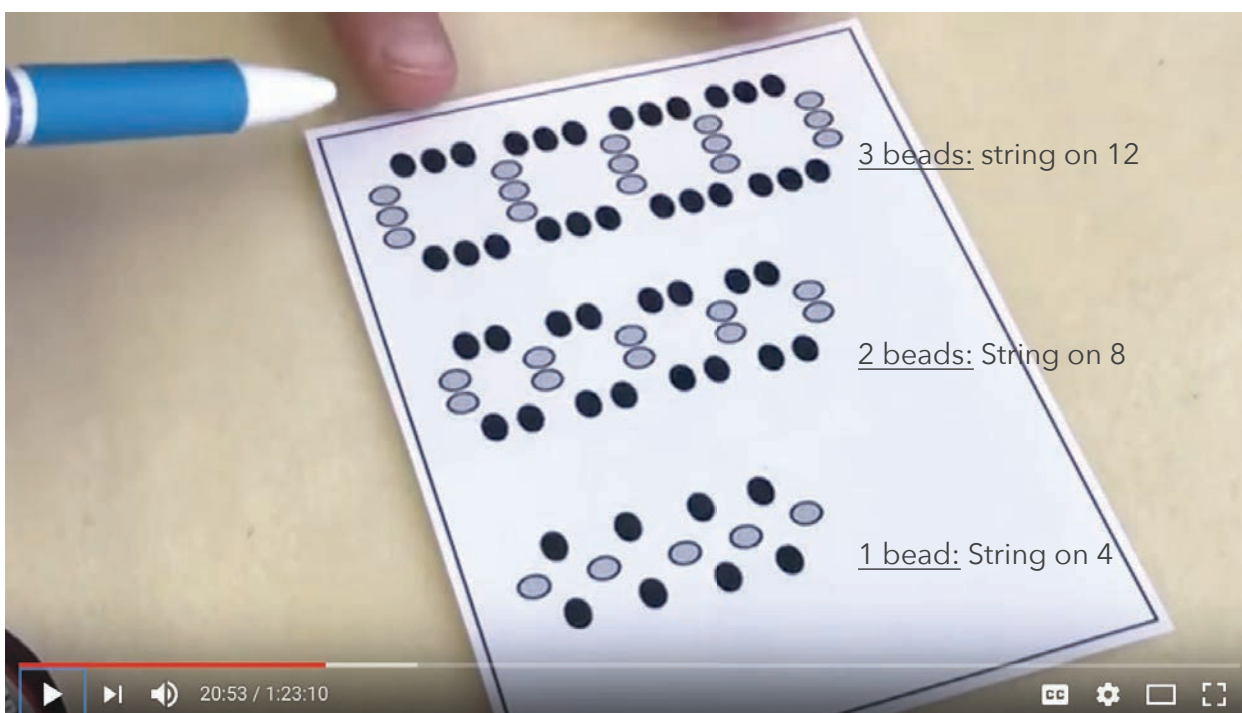
What ever you decide to create, it all starts with a simple base....As Emily says, it's the most flexible and adaptable of all the bead stitches.



The first sample Emily builds for us uses the black and white 11/0's and Clear Blue KO in our Seed Bead School Inna Kit. Emily uses her needle of choice, an English Beading Needle in Size 12.

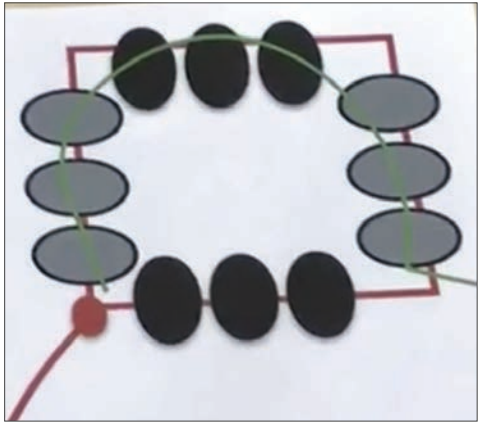


To learn RAW, Emily starts us off looking at charts.



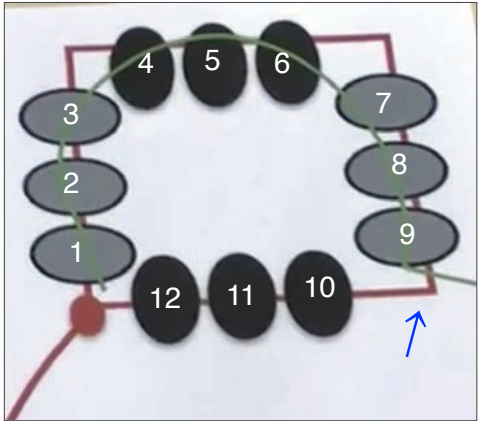
This stitch has several variations but it's important to think of it as having sides, so whether your side has three beads, or two, or even one, the concept is that it's a square. Emily points out it might look more like circles when you begin stitching, but when you're done, you will have 4 sides.

Copies of Emily's charts are at the end of these notes and you can download and print them to help you diagram.



Begin by stringing on 12 beads (shown with red square) and then tying two square knots. Emily knows that the knot, no matter how she holds her beads, is always going to tell her where the start of her square is.

Emily also reminds us to leave a tail of at least 6-8 inches, so that we can weave the end back in later.



Before she can add more beads, Emily has to string back through 9 beads (shown in green thread) and come out after the ninth bead (shown with arrow).

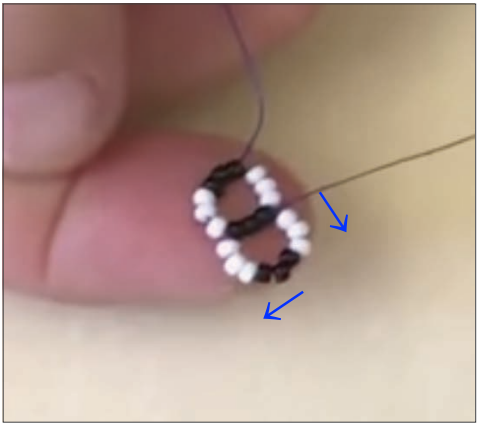
She knows where beads 1-9 are based on where her knot is.



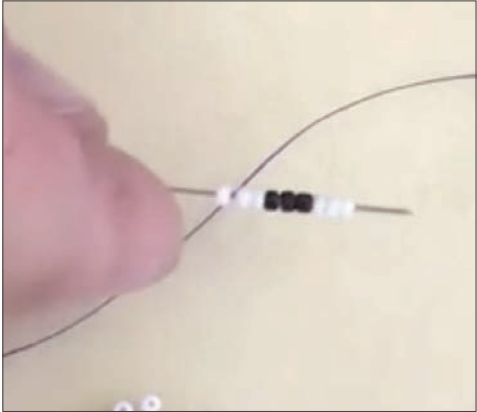
### **Minute Marker 31:30**

Emily strings on 9 beads and then goes back through beads 10, 11 and 12 from the previous square to form a new square.





Before Emily can add more beads, she has to string her needle and thread through the white wall and the black wall of her new square.



When she pulls her needle and thread out of the third black bead, she is then going to pick up 9 more beads, 3 white, 3 black, and 3 more white.



Emily makes a new square by going through the black wall of the last square.



It's pretty cute how Kate got confused on when to add the next square and many watching were coaching her!

So, after you've formed the third square, bring your needle and thread through the 3 white beads and then the 3 black and you'll then be coming out on a Right Angle to form another square.



And before you know it, the squares begin to appear and the path the needle and thread need to take becomes clearer.

So, in this photo, what does Emily need to do now?

The answer, if you were continuing to make a longer row of squares, would be to go through the 3 white and then the 3 black BUT....



Emily told us when we started that the width of the cuff was 4 squares, not 5...so we need to begin a new row.

So, Emily is going to string down through the 3 white beads and her thread will come out *before* the 3 black.

Now Emily is forming the next row of right angle squares to her bracelet and this time she will be picking up beads in a different alternating pattern. Right angles only to add more squares to her "fabric."

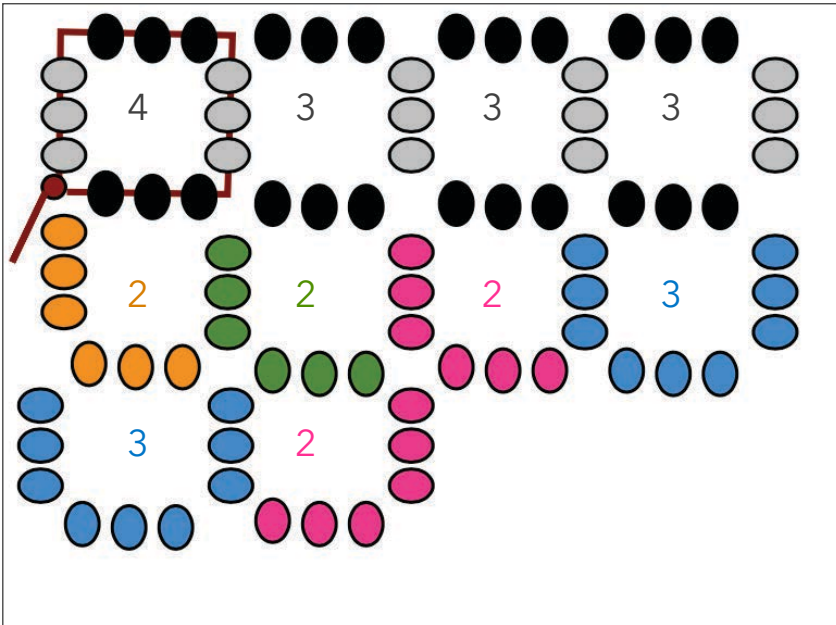
### **Minute Marker 36:13 to 48:28**

Be sure to watch this entire portion of the video! Some viewers said they would do this several times to see how Emily builds the squares.

Remember, "right angles are always right angles, whether you go left or right!"







**Minute Marker 52:40**

Another chart Emily has created shows the walls she had to add to build each square.

Next week, Emily will be teaching us (including Kate!) on how to embellish RAW and add a clasp. At **Minute Marker 57:00**, Emily starts talking with us about the materials.





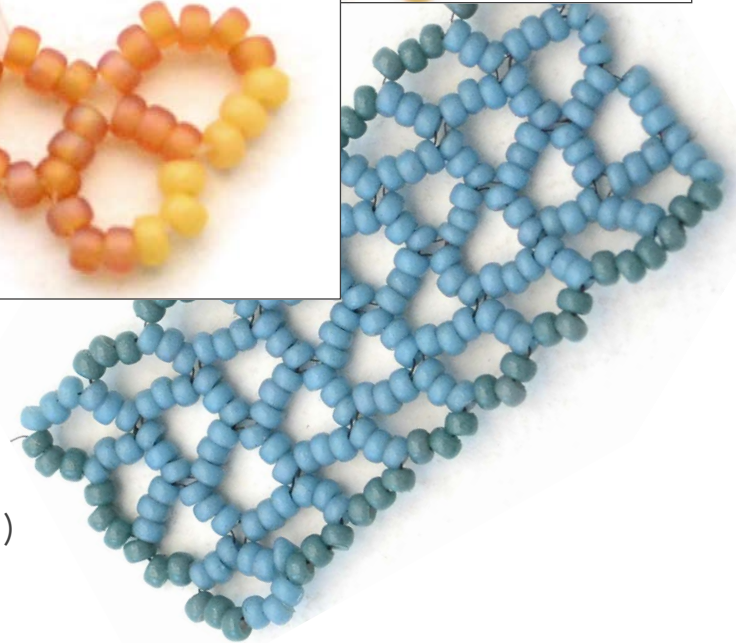
Emily likes to do Right Angle Weave with 4 lb Fireline and warns us how sturdy it is, so we don't want to use good thread snips to cut it. Use Xuron Thread/Cord Scissors or really good shears...the Fireline can mark or mar fine thread scissors.



At **Minute Marker 58:50**, Emily starts building the Austin Sample. The seed beads she uses for her RAW squares are 11-4452 (Duracoat Opaque Banana) and 11-133FR (Matte Transparent Topaz AB).



And Kate showed a portion of New York, New York that was done with a base of:  
11-4479 (Duracoat Opaque Moody Blue)  
and  
11-4481 (Duracoat Opaque Eucalyptus)





Watch along as Emily and Kate create new squares. You can practice at home and learn RAW by watching the video. Be sure to weed out the really inferior seed beads that are either too small or too large. You want consistency!

And as you weave, you want to have that final measurement in mind. Your RAW section should be about 1/2 inch shy of your finished length. Remember, we will be adding a toggle clasp in Part Two.

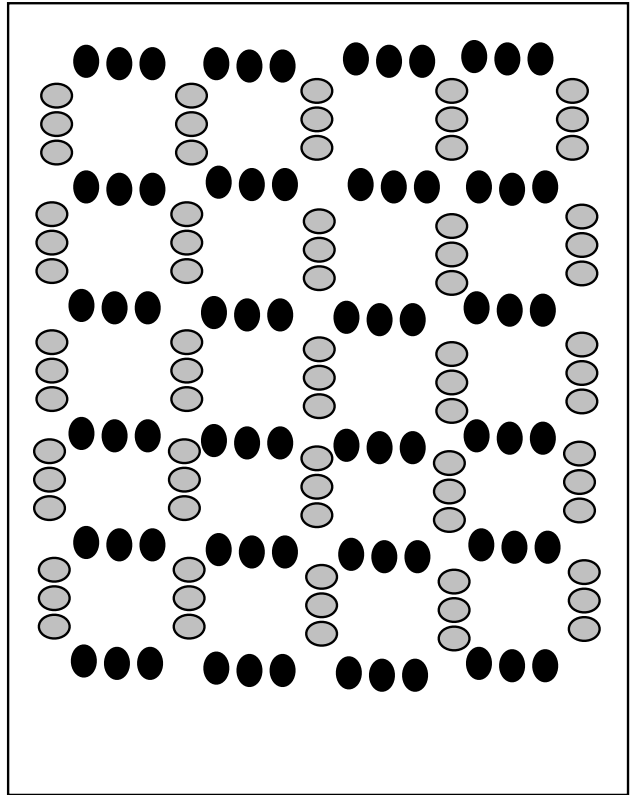
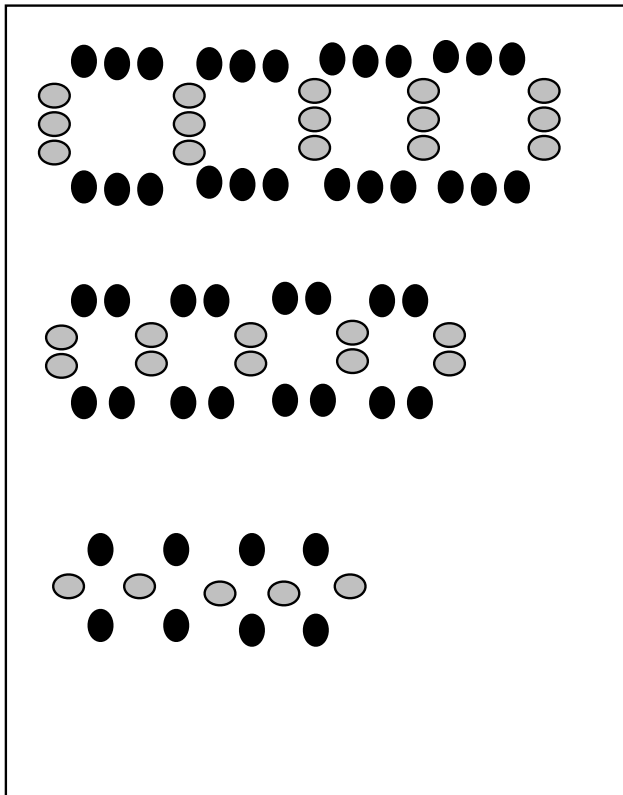
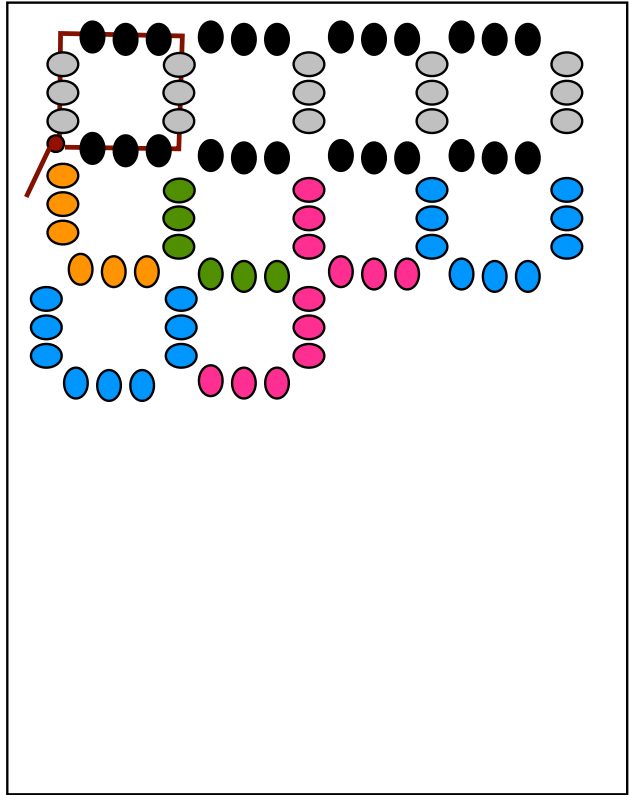
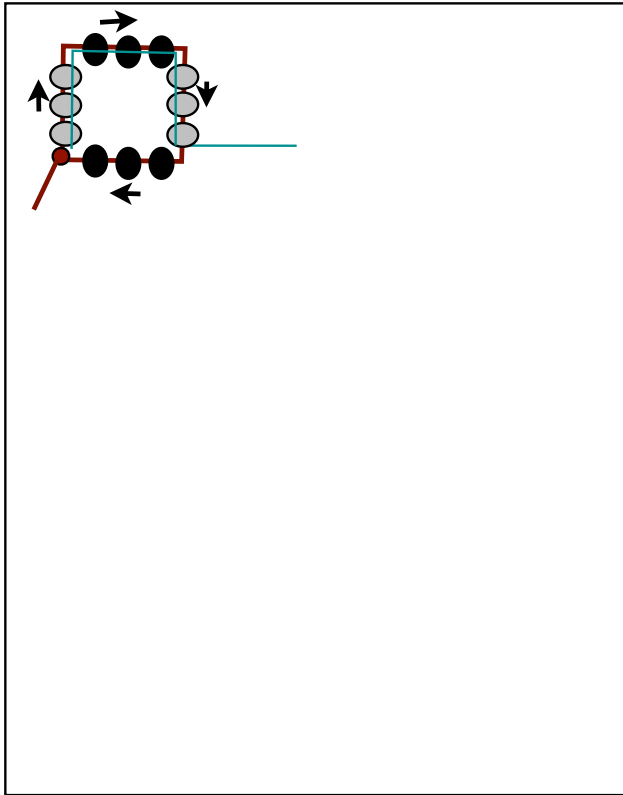
So, make a couple "volcanos" of seed beads, grab a Size 12 Seed Bead Needle, some beeswax, your KO thread or Fireline, and get weaving! See you next week!



And don't give up hope! If we can learn, so can you!

Happy Beading!

Kate and Emily



Emily's RAW Weave Charts to download for personal use only.  
 Not to be reproduced for resale.

## Links to Us...

[beadshop Facebook Page](#)

[beadshop Twitter Page](#)

[The Bead Table Blog](#)

[Newsletter Sign Up](#)

[info@beadshop.com](mailto:info@beadshop.com)

[kate@beadshop.com](mailto:kate@beadshop.com)

[janice@beadshop.com](mailto:janice@beadshop.com)

[emily.beadshop@gmail.com](mailto:emily.beadshop@gmail.com)

[drea.beadshop@gmail.com](mailto:drea.beadshop@gmail.com)

## Links to Events...

[Last Week's Facebook Live Broadcast: Forged Earrings](#)

[Previous Facebook Live Broadcasts](#)

[Facebook Live Youtube Playlist](#)

[Free Tip Friday 9/22/17: Making Wire Beads With Kate](#)

[Free Tip Friday Youtube Playlist](#)

[Picard Trade Bead Museum in Carmel Valley, California](#)

[Bead Retreat Live Broadcasts Playlist](#)

[Bead Fest Tacoma](#)

[Kate's Class Schedule at Bead Fest Tacoma](#)

[Drea's Blog Post About MG Walk & Fundraiser](#)

[Tiara Challenge](#)

## Links to This Project's Ingredients...

[Right Angle Weave Project Page](#)

### [Austin](#)

1 [Copper Forest Secrets Toggle Clasp](#)

1 Spool [Crystal Fireline 4LB](#)

1 Tube [Matte Transparent Topaz AB 11/0 Seed Beads](#)

1 Tube [Silver Lined Dark Topaz AB 11/0 Seed Beads](#)

1 Tube [Duracoat Opaque Banana 11/0 Seed Beads](#)

1 Tube [Gold Miyuki Baroque Pearl 6/0 Seed Beads](#)

1 Pkg [Size 12 Beading Needles](#)

### [New York, New York](#)

1 [Silver Black Forest Secrets Toggle Clasp](#)

1 Spool [Smoke Grey Fireline 4LB](#)

1 Tube [Duracoat Opaque Moody Blue 11/0 Seed Beads](#)

1 Tube [Duracoat Opaque Eucalyptus 11/0 Seed Beads](#)

1 Tube [Silver Gray Ceylon 11/0 Seed Beads](#)

1 Tube [Silver Miyuki Baroque Pearl 6/0 Seed Beads](#)

1 Pkg [Size 12 Beading Needles](#)

## Links to Products & More...

[Class Handouts](#)

[Skill Builders](#)

[Seed Bead School](#)

[Peyote Stitch Project Page \(With New Ombre Samples\)](#)

[Brick Stitch Project Page](#)

[Laddering with Infinity Stitch FB Live](#)

[Stretch Therapy Project Page](#)

[Seed Bead School Inna Kit](#)

[Craft Wire](#)

[Awl For One Tool](#)

[Pearls](#)

[Seed Beads](#)

[11/0 Seed Beads](#)

[Baroque Pearls](#)

[Bugle Beads](#)

[Cube Beads](#)

[Seed Bead Needles](#)

[Beeswax](#)

[FireLine](#)

[KO Thread](#)

[Toggle Clasps](#)

[Xuron Thread and Cord Scissor](#)

[4mm Fire Polish Czech Glass Beads](#)

['Just In' Section](#)

[Tribal and Trade Beads](#)

[Heishi Metal Beads](#)

[Organza Gift Bags](#)