

Beadshop LIVE: 10.2.19

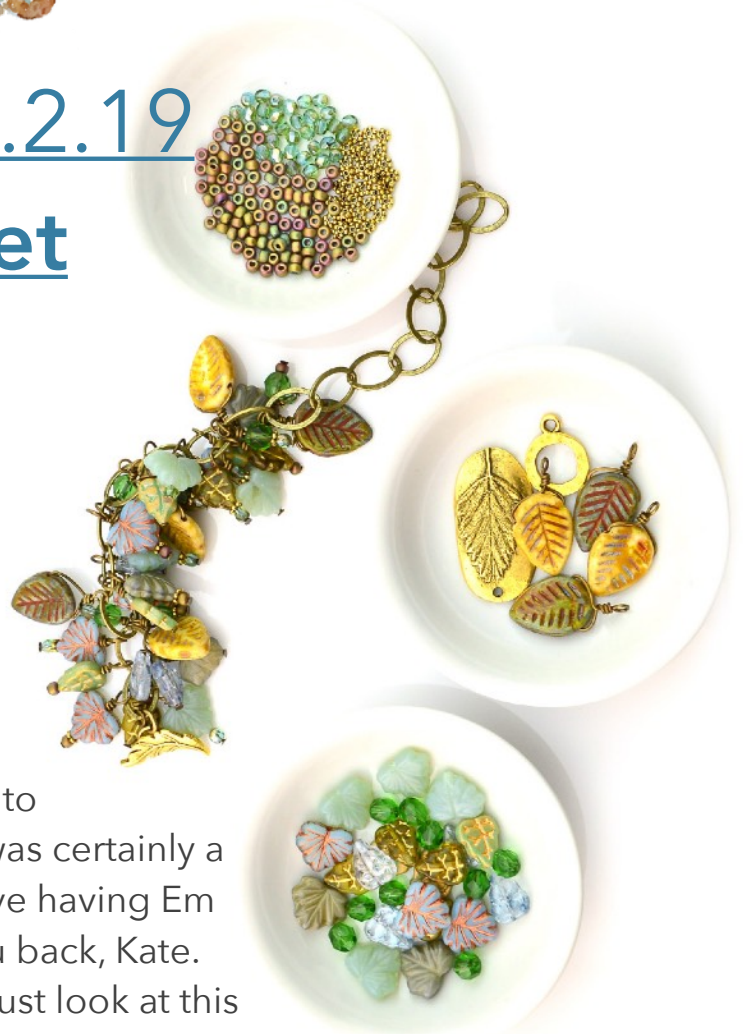
Leaf Charm Bracelet

With Kate Richbourg on Beadshop LIVE

Project by Kate Richbourg

Photography by Baranduin Briggs & Karen Marshall

Episode Notes by Drea Carbone



Kate's back! She got some great R&R in Mexico last week, and Emily came on down to work on some Brick Stitch with us. While it was certainly a well-deserved vacation, and while we do love having Em here, we gotta say...we are glad to have you back, Kate. And what an EPIC bracelet to return with – just look at this lovely, luscious, luxurious leafy goodness!

Calling this Autumn Awakening, Kate has some tips and tricks for designing and wire-work on this Autumnal masterpiece. Taking her cue from an archived beadshop project, the Chunky Wire Wrap Bracelet, Kate was ready to rock and roll with these leaves to help usher in the Autumn. Let's get to it!

Want to bypass the chit chat?

Go to **Minute Marker 9:00** to hear about the project background and ingredients.

Skip to **Minute Marker 30:30** to get right to the learning.

Minute Marker 9:00

Kate chats a bit about your materials today, including our new leaves and how they'd also look great in an Emily project, [Textured Bead Fringe](#).

She also brings up her choice to use a toggle clasp, but finds a few comments from viewers who are skeptical, and mention how sometimes a toggle clasp on a bracelet can be problematic...but the solution here is easy: make sure you're using toggles on weighty bracelets, and not a lightweight one. You can also add a small length of chain to use as a safety chain—smart thinking, Kate!



Kate and Baranduin also take a peek at our new leaf shapes and colors...find them all in our [Czech Glass](#) category, then select [leaves](#).

In the middle of the leaf exploration, inspiration strikes Kate...what a surprise! Check out her cute idea to string the Maples back-to-back as an earring or to string in a bracelet.



Minute Marker 26:30

Want to get Kate's pink-and-brown colorway she makes up on the fly? We love it, too! Here's what she put together:

[Maple Pink Opaline Matte](#)
[Maple Maroon Opaque](#)
[Maple Jet Bronze Wash](#)
[Maple Golden Umber](#)
[Dogwood Aged Ivory Mercury Finish](#)
[Dogwood Amber Mercury Finish](#)
[Heart Milky Pink Glow](#)
[Heart Milky White](#)
[3mm Rose Bronze Illusion](#)
[6mm Luster Opaque Amethyst](#)
[8-2035 Matte Khaki Iris 8/0](#)
[Feel Good Chain- Antique Copper](#)
[Shelter Toggle- Antique Copper](#)
[Alder Leaf Charm- Antique Copper](#)



Minute Marker 30:30

Start with about 7" of chain, or adjust for your own wrist size. You need some extra length to help account for the heft of this bracelet, these leaves take up space! Kate adds the toggle bar to one end of the chain, attaching with a pair of jump rings to allow for some extra movement as well as length to help close the clasp.

Each link of chain has four dangles hanging from it, two on each "side" of each link. Kate repeats her color patterns. This gives her bracelet a "cohesively random" look. It's not too random, not too patterned...see what we mean?



This way there's not too many of the same bead all in one spot.

Set yourself up for an assembly-line style of working! Add all your beads to the headpins first. Then go through and bend them all. Next, make your loops. Finally, add them to your chain, coil, and finish them.

The production-mode Kate talks about helps to keep your muscle memory working and ensures smooth sailing with your wirework. Doing one at a time can be a bit jarring! Doing every *task* instead of every *piece* really helps!



Beads on headpins...



...90° bend...

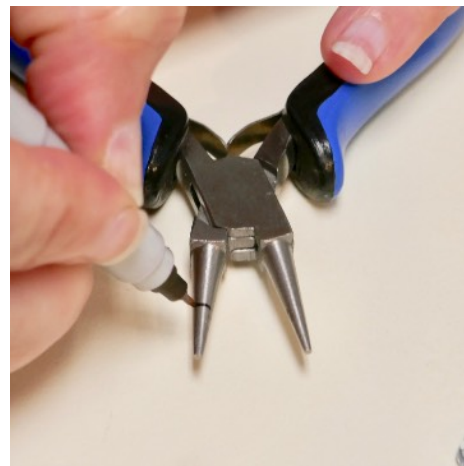


...loop!

Tips and tricks, anyone?

First off, here is our fantastic [Skill Builder on How to Wire Wrap Using A Headpin](#).

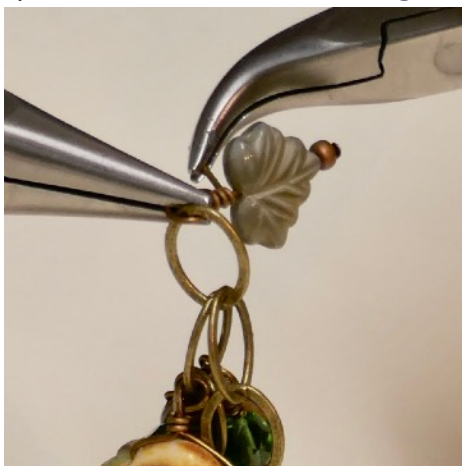
Second, Kate's tip on marking your Round Nose Pliers with a Sharpie is great...using that mark as a guide helps ensure your loops are uniform in size.



Once your bead units are all made up (but not closed!) re-organize everything into your pattern to help you attach to the chain in order with ease.



Now...add one at a time and make your coils to wrap these beauties closed around the links. Trim the wire tail, and make sure you're not clipping your loop, too! Cover the wire so it doesn't go flying (ouch!) and then push the little bit of tail down into place so it's not sticking out.



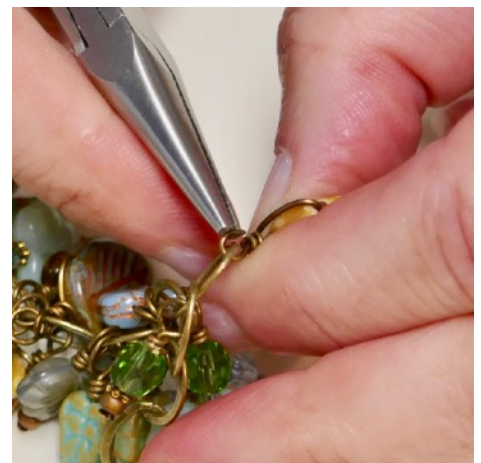
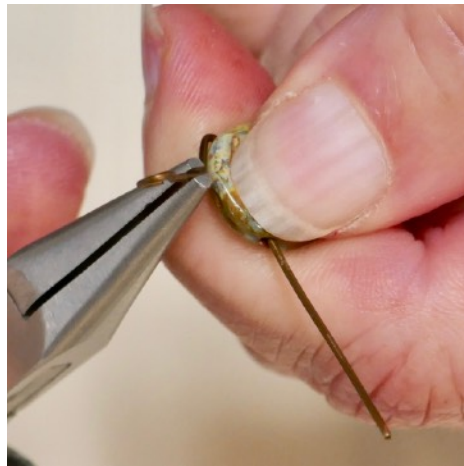
Minute Marker 1:02:40

OK, now what about those Dogwood leaves? They are drilled differently, which means they won't lay correctly if we stack them on head pins. Eye pins to the rescue! Similar to Wire-Wrapping A Briolette, we'll use eye pins to make a little "hanger." Kate points out that the real challenge is centering the loop at the top of the leaf, but it's no biggie...once on the bracelet it's going to be really hard to see if your wirework is off by a bit. No biggie!

So. Here we go! Add a Dogwood leaf to an eye pin, and leave about 5/8" of wire from the bead hole to the eye. Bend the wire upward along the top curve of the leaf. Use chain nose pliers to make a 90° bend, making the eye part stand up and leaving a bit of a "neck" which you'll wire wrap around with the other side.

So now, take the other end of the wire and bend it up to meet in the middle...coil it around to secure. Now you can just open the eye of the eye pin to attach to your chain. Be sure to open and close this eye correctly...like a jump ring!

Note: In Kate's first example (and these photos) she leaves her first slide a bit too long, and the "neck" is wayyy long. The technique is perfect, it's just the measurements were a bit off! Half an inch is a bit too long, but 5/8" should be ok.



Minute Marker 1:17:00

Once you've added all your leaves and dangles, you can add a charm and your closing toggle loop. Be sure to measure the bracelet on yourself before you close it off! For the purposes of the length of our live show, Kate hasn't filled in her last few links... but she does after the episode ends and you can see the finished piece on the [Project Page](#) and at the end of these Notes. Gorgeous!

Thank you so much for joining us...and enjoy!!



At the end of the episode, Kate shows off Alley Mori's latest Monthly Mix Wrap! There are actually three wraps made with October 2019's mix, and you can find all three right here on the [Fall Gourds Wraps](#) project page, part of the [Farmer's Market](#) collection.

Links to Us...

[beadshop YouTube Channel](#)

[beadshop Facebook Page](#)

[beadshop Twitter Page](#)

[beadshop on Instagram](#)

[The Bead Table Blog](#)

[Newsletter Sign Up](#)

[FB Community-The Bead Table](#)

info@beadshop.com

kate@beadshop.com

janice@beadshop.com

drea@beadshop.com

Links to Events and More...

- Last Week's Episode: [Anticline](#)
- [Beadshop LIVE Youtube Playlist](#)
- [Beadshop LIVE Archive Page](#)
- [Free Tip Friday YouTube Playlist](#)
- [FTF Archive Page](#)
- [Society6 Site](#) (for Alfie mugs and more!)

Links to This Project's Ingredients...

[Charm Bracelet and Recipe](#)

Autumn Awakening

- 1 [Shelter Toggle- Antique Gold](#)
- 8 [Maple- Milky Green Opaline Beads](#)
- 8 [Maple- Blue Opaline Copper Wash Beads](#)
- 8 [Maple- Silken Gray Beads](#)
- 8 [Heart Leaf- Smoky Topaz Gold Beads](#)
- 8 [Heart Leaf- Luster Blue Beads](#)
- 8 [Heart Leaf- Turquoise Antique Shimmer Beads](#)
- 5 [Dogwood- Honey w/ Picasso Finish Beads](#)
- 5 [Dogwood- Artichoke Coral Wash Beads](#)
- 1 Strand [3mm Aquamarine Celsian Czech Fire Polish](#)
- 1 Strand [6mm Prairie Green Czech Fire Polish](#)
- 1 Tube [8-2035 Metallic Khaki](#)
- 1 [Alder Leaf Charm- Antique Gold](#)
- 1 Pkg [Daisy Spacers- Gold](#)
- 3 Pkgs [2" Head Pins- Antique Brass](#)
- 1 Pkg [2" Eye Pins- Antique Brass](#)
- 1 Pkg [6mm/18g Jump Rings- Antique Brass](#)
- 1 Ft [Feel Good Chain- Antique Brass](#)



You will also want to have...

[Chain Nose Pliers](#), [Bent Chain Nose Pliers](#),
[Round Nose Pliers](#), and [Flush Cutters](#)