

facebook LIVE: 4.11.18

Fun With Soft Flex



*Project by Sara Oehler
With Kate Richbourg and Sara Oehler on FB Live
Episode Notes by Drea Carbone
Photography by Baranduin Briggs and Karen Marshall*

What a treat! We were so lucky to have special guest Sara Oehler from Soft Flex with us on FB Live this week. We learned how to make one of the projects in her incredible new book, *Seed Bead Revolution*, and got a peek at some other really amazing pieces made with Soft Flex.

Sara shared some Soft Flex history and chatted about her own FB Live show, which airs on Wednesdays at 1pm PST on the [Soft Flex FB Page](#). She also gave us some background on the making of her latest book and all that went into it.

This was such a great show...enjoy!

Want to skip the chatter?

Fast forward to **Minute Marker 13:45** to see samples from *Seed Bead Revolution*.

Fast forward to **Minute Marker 22:00** to start this project's learning.

Minute Marker 13:45

Check out some of the brilliant pieces Sara and her colleague Kristin Fagan created for *Seed Bead Revolution*.





Minute Marker 22:00

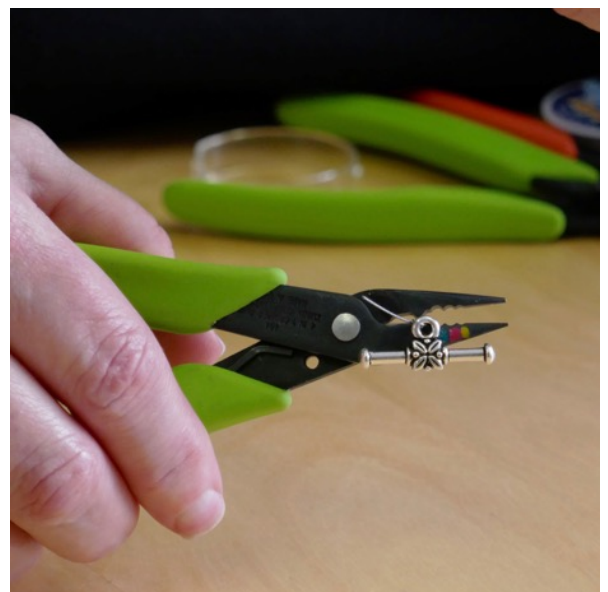
OK, gang! Grab your tools and your Soft Flex...and let's get beading.

In Sara's book, she calls this design the Western Diamondback. We'll follow along as she makes it in the River Stone colorway.

We'll start by creating Sara's connector, which is very similar to the silk wrapped leather connectors we made with Janice's Trail's End bracelets. We'll use Soft Flex .010 to create the little figure-8 with a crimp in the middle. On one loop, string on one side of the clasp. On the other, string on a single SuperDuo.

Kate demonstrates crimping with the Xuron 4 in 1 Crimping Plier. We have a fantastic Skill Builder on crimping, which you can review [here](#). We've marked our Crimpers with colored dots to help identify which holes to use in the crimping process, which was a good idea Janice had last year! The Xuron Crimpers can crimp several sizes of crimp tubes, they're really great!

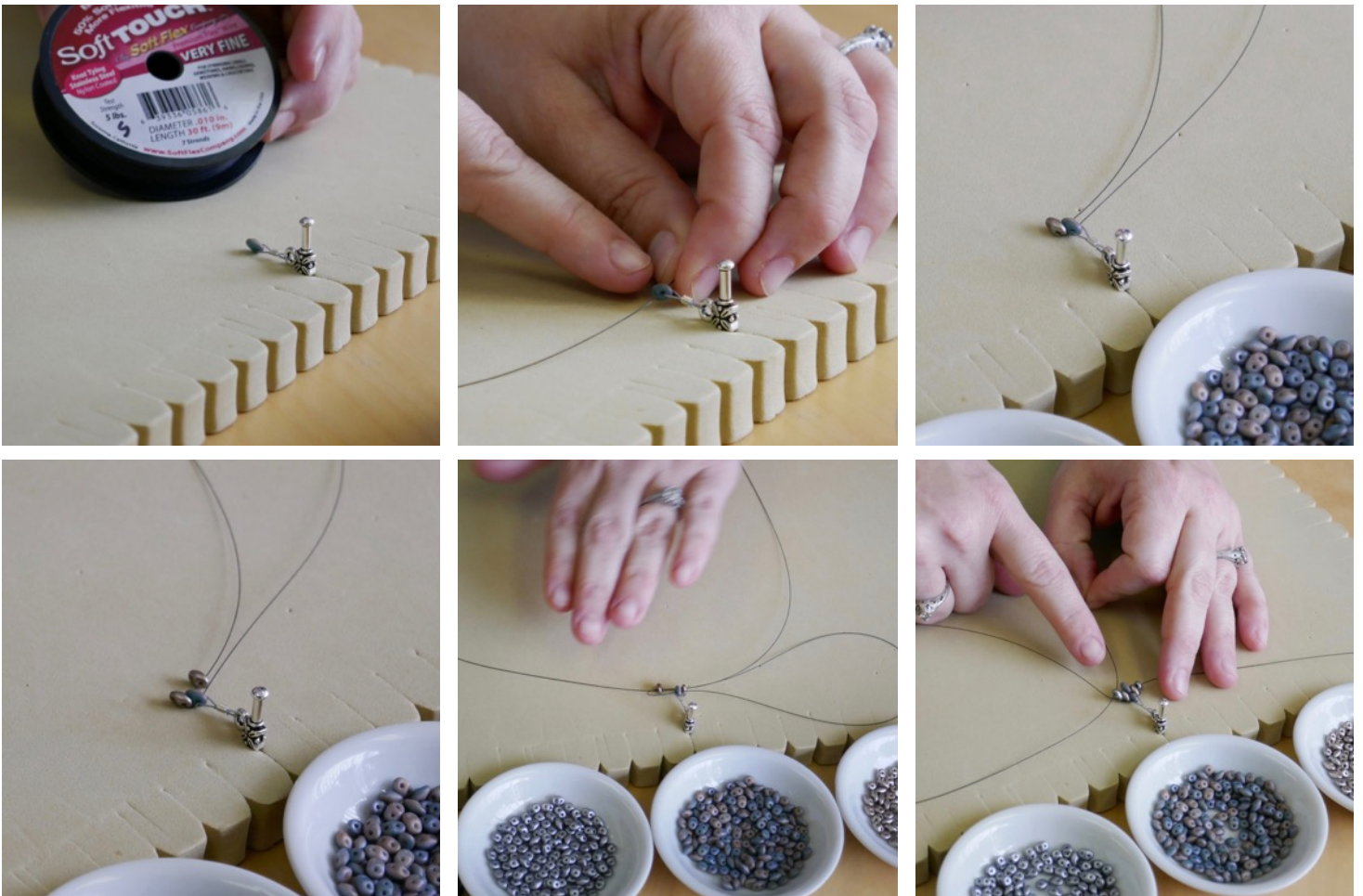
Kate creates this little bow-tie component and passes it over to Sara to start beading from.



Minute Marker 31:00

Sara's setup is simple: She inserts the Toggle Bar into the Macramé Board and twists the little connector component Kate made so that her SuperDuo is set up perfectly for her beadwork to lay flat.

She cuts a length about 2 ft long of Soft Flex .019 in Black, and strings it through the top hole of her SuperDuo alongside the .010 that was used to make the connector. Sara notes that when she made her original bracelet samples, she used a 5-6ft length of Soft Flex...for the purposes of the show she's using a shorter length.



Sara adds a SuperDuo on one side and then goes down through the second hole on her original SuperDuo, then picks up a SuperDuo on the other side. Pull taut, and slide your other side of the Soft Flex strand through these same three holes going the other direction. You'll basically be using a ladder stitch to go back and forth through the bead holes...like laddering without the leather edges! Increase and decrease beads on the sides to create the diamond shapes. As you go through first one hole and then the other of each SuperDuo, they will line up next to each other and fit into each other perfectly.

Minute Marker 43:45

What happens when you run out of Soft Flex? Sara shows us how to end a strand and start a new one.

Sara ties two overhand knots and pulls tight. She trims the tails close to the knot and adds a dab of Zap Glue to the knot to secure it.

You don't want to hide your knot within your beadwork, it will cause your SuperDuos to sit unevenly! Knot your Soft Flex on an outer edge. (Sara shows why later!)

To start a new strand, simply cut a new length of Soft Flex and string it into the next row of holes from where you left off. Make sure you have an equal amount of Soft Flex on both sides of your beadwork since you're using both strands to bypass each other as you bead.



Minute Marker 51:30

Sara really gets beading...watch how fast her bracelet works up! This is really great spot to watch, you can really see the path the Soft Flex takes as Sara adds beads. It's a great view of adding the beads in the inner rows. Kate points out that what you do with one side of the thread you will repeat with the other side of the thread.



Minute Marker 56:30

A viewer asks about graduating the sizes of the diamonds, which is so easy to do! Just add a new set of SuperDuos to the outer edges to expand the diamond...see how our in-progress sample is getting larger as it goes? It's just adding one more SuperDuo to each side until you reach the width you want. When decreasing, it's also simple: you just don't add beads to the outer edge!

You can also choose not to increase over and over and just make a long, straight bracelet design.



Minute Marker 1:01:00

Kate takes a moment to go over Crimp Covers while Sara beads away. Don't fear the Crimp Cover! We know they are tricky sometimes and many find them intimidating...but watch Kate, she makes it easy! She demonstrates with 2mm crimp tubes and a 3mm cover and creates the other side of the clasp connector for Sara's bracelet.

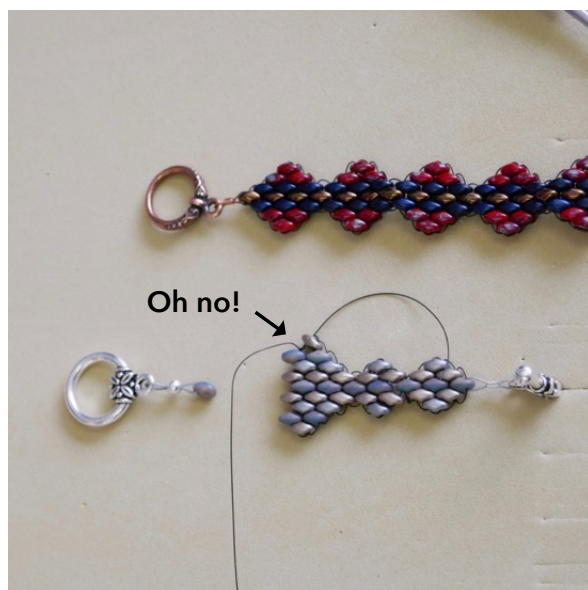
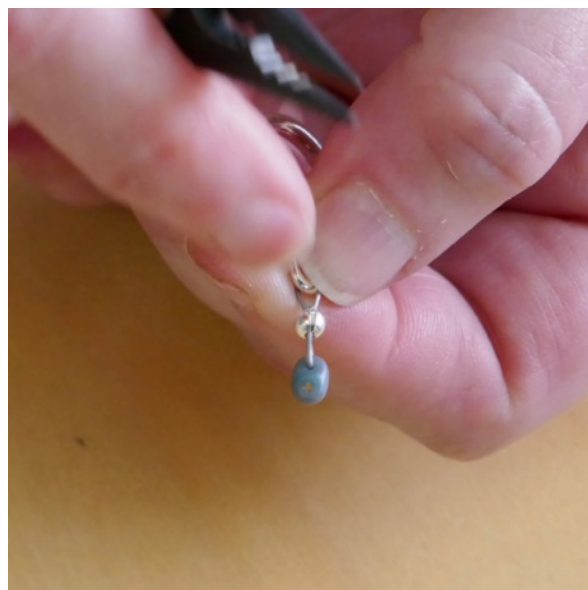
Kate shows a few tips and tricks here...she uses the tips of her Crimper to pull her Soft Flex through the crimp tube, and makes sure her Soft Flex has plenty of air before she crimps and adds her cover. The crimp cover will take up a tad more space than the crimp tube itself does, so you do want to be sure to leave a bit of extra space.

To the right, Kate's crimp cover still has an open seam. She slowly, carefully, and gently "hugs" the cover closed. With each hug of the pliers the crimp cover will close up and Kate adjusts to apply pressure to where it is needed...closing the seam, making sure the edges are the same height, making sure there's not one edge higher or lower than the other...take your time!

Minute Marker 1:09:00

Sara shows us why it's important to knot finished pieces of Soft Flex on the outer edge of the bracelet...whoops! That SuperDuo gap is not what we want to have happen!

Sara shows how to end the bracelet with the same technique as we started, with the connector Kate made.



Tada!

We can't wait to see what you all make with this fun new technique! Kate and Sara show off some more of Sara's samples (we show them in the beginning of Episode Notes) and announce the awesome raffle prizes we gave away today...it's always fun to tune in live for the community and chatter in the comments...but also for a chance to win a giveaway or raffle! You can purchase *Seed Bead Revolution* right on **Soft Flex's website** and also from **Amazon**.

Thank you, everyone, for tuning in, and happy beading!



Want more?
Catch FTF 4.20.18,
where Kate continues
creating those
cute connectors and
makes a fun little
bracelet!

Links to Us...

[beadshop Facebook Page](#)
[beadshop Twitter Page](#)
[beadshop on Instagram](#)
[The Bead Table Blog](#)
[Newsletter Sign Up](#)

[FB Community-The Bead Table](#)
info@beadshop.com
kate@beadshop.com
janice@beadshop.com
emily@beadshop.com
drea@beadshop.com

Links to Events and More...

Last Week's Facebook Live Broadcast: [Prairie](#)
[Facebook Live Youtube Playlist & FB Live Archive Page](#) on beadshop.com
[Free Tip Friday YouTube Playlist & FTF Archive Page](#) on beadshop.com
[Bead and Button Show](#)
[Bead & Button 2018 Class Preview with Kate & Janice](#)
[Kate's Classes at Bead and Button](#)
[Project Embellish Challenge](#)

Links to This Week's Ingredients...

Fun With Soft Flex

Recipe

River Stone

- 1 Leafy Toggle Clasp- Silver
- 1 Spool Soft Flex .019 Satin Silver
- 1 Spool Soft Touch .010 Satin Silver
- 1 Tube Pastel Light Brown SuperDuos
- 1 Tube Pastel Light Gray SuperDuos
- 1 Tube Green Turquoise Ivory Nebula SuperDuos
- 1 Pkg Crimp Tubes- Silver
- 1 Pkg 3mm Crimp Covers- Silver
- 1 Pkg Big Eye Needles
- 1 Tube Zap Glue



Wayfarer

- 1 Forest Secrets Clasp- Antique Copper
- 1 Spool Soft Flex .019 Satin Silver
- 1 Spool Soft Touch .010 Black
- 1 Tube Jet Bronze SuperDuos
- 1 Tube Picasso Coral Red SuperDuos
- 1 Tube Jet Metallic Suede Dark Blue SuperDuos
- 1 Pkg Crimp Tubes- Copper
- 1 Pkg 3mm Crimp Covers- Antique Copper
- 1 Pkg Big Eye Needles
- 1 Tube Zap Glue



You will also want to have:

Maxi Shears, Crimping Tool, and Macrame Board



Links to Learning, Products, & More...

[Class Handouts and Skill Builders](#)

[Main Project Page](#)

[Fun With Soft Flex](#)

[Soft Flex 101 Projects](#)

[Skill Builder: Crimps, Guardians, and Covers](#)

[Soft Flex Collection](#)

[Crimp Tubes](#)

[Crimp Covers & Wire Guardians](#)

[SuperDuos](#)

[Toggle Clasps](#)

[Tools](#)

[Xuron 4 in 1 Crimper](#)

[Maxi Shear Flush Cutters](#)

[Macramé Board](#)

[Zap Glue](#)



“What are you wearing?”

Check out Sara’s necklace and earrings...
wow!

