



## Beadshop LIVE: 4.24.19

# Designing With Wire and Chain

*With Kate Richbourg on Beadshop LIVE*

*Project by Janice Parsons*

*Photography by Baranduin Briggs, Karen Marshall,  
and Janice Parsons*

*Episode Notes by Drea Carbone*

Janice and Kate have been pearl-crazy lately! As we've come across new strands of pearls to love and adore there are some that we just get into our heads from a project right away. You may be surprised to know that our journey for this necklace started with far more pearls and just a touch of chain and glass—but look at what has evolved from Janice's trial-and-error! Although, I didn't see much error, if I'm being honest! Take a peek through Janice's design process and get a wire-wrapping workout with us in this fun episode...and create this lovely necklace to boot!

The chit chat is short...

Skip to **Minute Marker 8:00** to get right into the design discussion,  
and **Minute Marker XX:XX** to get right to the learning.

# Minute Marker 8:00

Here's a closer look at Janice's Project Map, complete with her own personal notes.



## **Minute Marker 11:30**

Now let's take a gander at the past lives of this project...the first iteration is almost unrecognizable! Some may remember seeing this in-progress as Janice was working on it during her annual Bead-Up at her home in Virginia in March.



### **Here we see...**

Pearls

6mm Pyrite Rounds

Jet Chrome O Beads

Little Shadows- Antique Silver

all strung on Soft Flex with crimps,  
crimp covers, and wire guardians.

### **and...**

Lt Colorado Picasso Spindles

Pyrite Briolettes

Copper Turquoise Briolettes

More 6mm Pyrite Rounds

Think of Me Flower Charm

all wire-wrapped to Long View  
Chain in Antique Silver.

Finish it off with an Essential  
Toggle, Filigree Bird Focal, and a  
selection of Jump Rings, Head  
Pins, and Wire.

*What's not to love? Well, it just  
didn't speak to Janice.*

From the original, Janice moved on almost entirely... she wanted to keep working with the chain and the Spindles...but how? She switched her colorway to these rosy hues, starting with the Rosewood Bronze Spindles, and experimented with adding more and more silver chains. She also tried using different focals, as you can see here, with a Rose Quartz Pi disc and Ancient Leaf from Green Girl Studios. What else? She tried knotted pearls, tiny charms, and more! Finally she decided to ditch the focals and make the necklace a series of graduated strands with elegant U-shapes.



Here are a few more shots of Janice's in-progress trials and tests!



## **Minute Marker 20:00**

Kate takes a few minutes to go over our latest toggle clasps and chains...we have a great mix of old and new chains used in the Longing Necklace. To the right, here's what we used, all in Antique Silver (but all are available in several other shades...click the names for more).

Note how Janice paired beads with similar shapes to the links of the chains...Spindles with Troika, and 6mm Rounds with Fancy Pants, for example. She also made sure to break up the chains in placed that made sense...and vice versa. Note how she uses a beaded chain of pearls and breaks it up with single links from Fancy Pants. Placement can be everything!

One thing we don't include in the ingredients on this piece? The jump rings! Don't cut the open links on your chain as you work...use them! Troika and Fancy Pants both have plenty of open jump rings as links—reuse them! If the links are soldered, you're out of luck, but there are plenty of open links on these two chains to get you through this whole project. Be sure to check out our How to Open and Close Jump Rings Securely Skill Builder...you definitely want those rings closed well!

For wire wrapping, we'll want 22G for the larger glass beads, and 24G or 26G for the pearls and briolette.

Kate also points out Janice's name tag! A cute and clever way to brand your jewelry, and here are her resources for tags:

[Infinity Stamps](#)

[MicrostampUSA](#)

[Frontline Engraving](#)



**Troika**



**Long View**



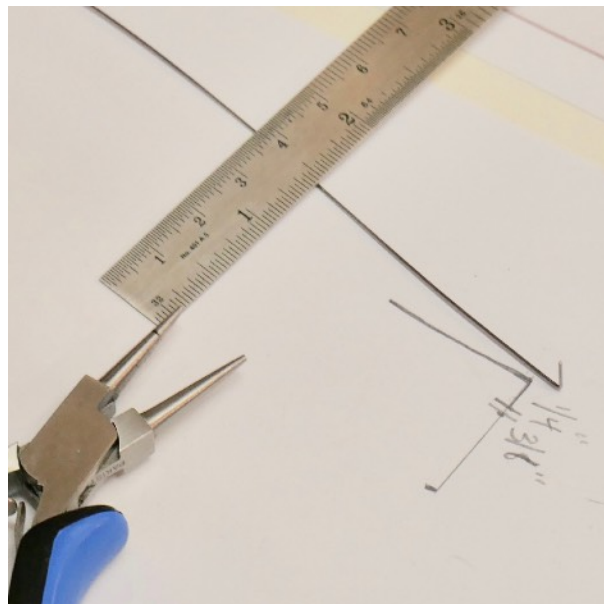
**Fancy Pants**



**Little Lentil**

### **Minute Marker 46:00**

Let's wire wrap! We have great [Skill Builders](#) on both [Rosary Loops](#) and [Wire Wrapped Bead Units](#), but you can also check out our refresher on the video and below. Kate uses a [ruler](#) to help measure out some wire...first she wants to find out the correct length to make a loop size (in comparison to her bead) and then, once she has it, she can refer to that same length over and over again to ensure her *all* of loops are consistent in size. With a simple mark on her paper work surface, Kate now has a guide for her wire work to keep it consistent. Kate also marks her [round nose pliers](#), so she knows just where to hold her wire each time she makes a new loop.



### **Minute Marker 1:02:30**

Now, check out Kate's "assembly line" to create lots of components at once. She cuts several lengths of wire first, all the same length. Second, [flush cut](#) each end. Next, bend each at their right angle. Finally, make your loops. Now you can add your beads and repeat the process on the other side.

Doing this assembly line and repeating an action over and over helps with your muscle memory to make these loops easier and easier to make.



### **Minute Marker 1:10:00**

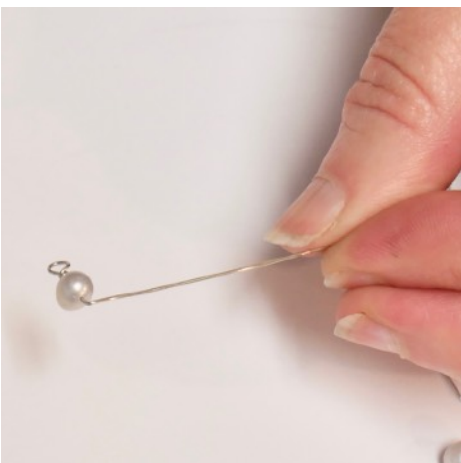
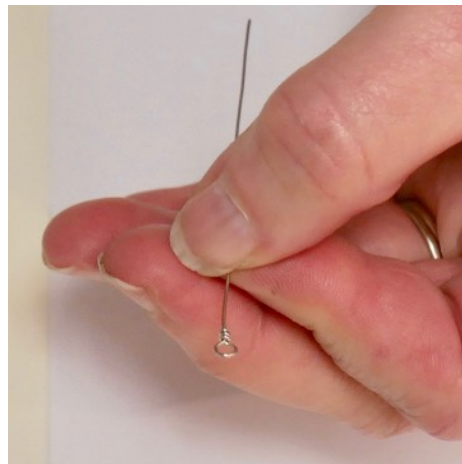
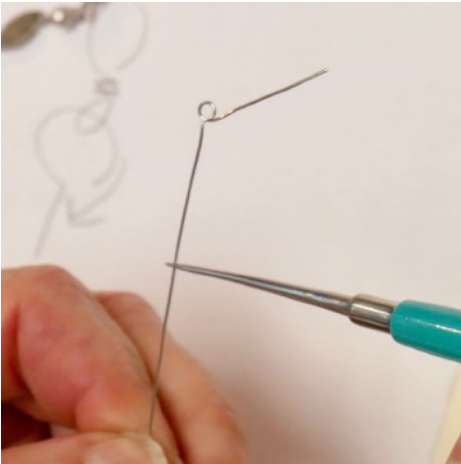
All your components made? Ready to combine your beads and chains? Let's go! Refer again to our [Skill Builder on opening jump rings](#)—the same rules apply to these rosary loops we've just created for our beads. Opening from the side and lifting means we'll keep our loops nice and round.



## **Minute Marker 1:16:00**

The other loops we're making today are wire wrapped loops. Where rosary loops are open and can be opened and closed, wire wrapped loops cannot. The tail of your wire will be wrapped around beneath your loop to create a secure and closed loop. With these loops, you need to add your next component before closing and wrapping your wire coil closed.

Here's our [Skill Builder on Wire Wrapped Bead Units](#)...with some great close-up photos from the show below that are really clear (thanks, Baranduin!).



Remember to add your next bead unit before closing off your second loop on a bead. If you've forgotten, no biggie—just connect with a new, not-closed-yet component. Do what works for you! Also, note how Janice connected links from both Fancy Pants and Troika chain directly to her wire-wrapped bead units, and she didn't use jump rings.

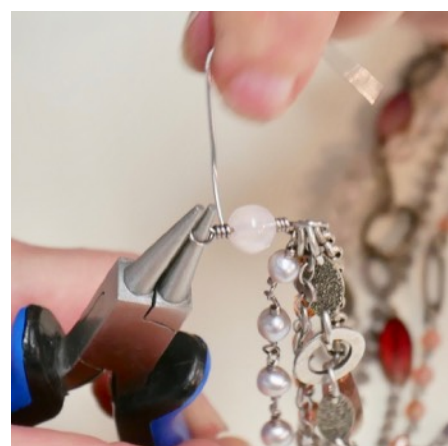
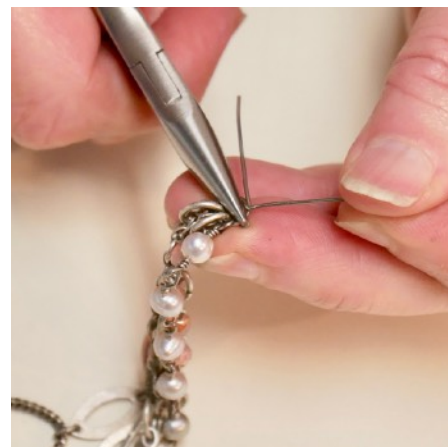
### **Minute Marker 1:31:00**

Let's talk about graduating your strands for this necklace. As Kate says, you need to make some decisions here...your overall length of this necklace and your order of strands. Refer to Janice's project map (back up on Page 2 of these Notes) to see her lengths. Her shortest strand is 17", and the longest is 24".

Another great reference is Janice's video on measuring necklace lengths that are perfect and personalized for you. [Find it here on our Facebook Page](#). If you're adjusting your length from what Janice did (and you may want to—make sure you're making a necklace that will look great on you!!) be sure to also adjust where your beads lay. One thing that's important to Janice is to make sure the bottom U-shape of the necklace lays nicely, symmetrically, and with that graceful shape.

### **Minute Marker 1:37:00**

Once your strands are all set as you like them, you'll want to combine them at the clasp. Make another wire wrapped bead unit...the one side which will connect all your strands needs to be a generous sized loop. Be sure to leave this loop open so you can add all your strands before wrapping it closed! Add a single bead and make a second wire wrapped loop on the other side, again, before wrapping the loop. If you do forget to add items before you've wrapped the loop closed, use a jump ring! In Janice's original sample she actually used a jump ring on one side, and *not* on the other—it's up to you!





What an epic episode! In closing Kate reminds us to do what we want to do...change up your colors, amount of strands, overall length...**you do you!** Janice reminds us to let the chain speak to you: choose beads that complement your chains, and choose what you love! We can't wait to see what you create...happy beading!



### Links to Events and More...

- Last Week's Episode: [Macrame With A Twist](#)
- [Beadshop LIVE Youtube Playlist](#)
- [Beadshop LIVE Archive Page](#)
- [Free Tip Friday YouTube Playlist](#)
- [FTF Archive Page](#)
- [The Journey Bead Retreat](#)

### Links to Us...

[beadshop YouTube Channel](#)  
[beadshop Facebook Page](#)  
[beadshop Twitter Page](#)  
[beadshop on Instagram](#)  
[The Bead Table Blog](#)  
[Newsletter Sign Up](#)  
[FB Community-The Bead Table](#)  
[info@beadshop.com](mailto:info@beadshop.com)  
[kate@beadshop.com](mailto:kate@beadshop.com)  
[janice@beadshop.com](mailto:janice@beadshop.com)  
[drea@beadshop.com](mailto:drea@beadshop.com)

## Links to This Project's Ingredients...

[Stones of Wisdom](#) and [Recipe](#)

### Synchronicity

- 1 [Essential Toggle- Antique Silver](#)
- 1 Spool [22G Non-Tarnish Titanium ParaWire](#)
- 1 Spool [24G Non-Tarnish Titanium ParaWire](#)
- 1 Strand [Spindles- Rosewood Bronze](#)
- 1 Strand [4mm Milky Pink Celsian Fire Polish](#)
- 1 Strand [5mm Soft Grey Potato Pearls](#)
- 1 Strand [6mm Rose Quartz Rounds](#)
- 1 [Rose Chalcedony Briolette](#)
- 1 Ft [Fancy Pants Chain- Antique Silver](#)
- 2 Ft [Little Lentil Chain- Antique Silver](#)
- 2 Ft [Long View Chain- Antique Silver](#)
- 2 Ft [Troika Chain- Antique Silver](#)



### You will also want to have...

[Chain Nose Pliers](#),  
[Bent Nose Pliers](#),  
[Round Nose Pliers](#),  
[Flush Cutters](#),  
[Nylon Jaw Pliers](#),  
[Handy Tape](#) or [Ruler](#).