

ONLY AT  
*beadshop.com*<sup>®</sup>  
*.....guiding and inspiring you with projects and products*

## facebook LIVE: 2.28.18 Chunky Wire Bracelets



*Project by Emily Miller  
With Kate Richbourg and  
Emily Miller on FB Live  
Episode Notes by Drea Carbone  
Photography by Baranduin Briggs  
and Karen Marshall*

What a fun and funky project! Quick, easy, and a brilliant showcase for your statement beads, the Chunky Wire Bracelet uses heavier gauge wire and simple loops to link together your bead story. It's a project that's easily adaptable to a variety of bead types and styles, from Tribal to Czech!

Want to skip the chit chat? Fast forward to **Minute Marker 17:45** to hear the discussion on the project and get right to the learning. Happy beading!

### **Minute Marker 17:45**

Emily started on this FB Live Project after seeing the response to the bracelets she brought to show off on her solo episode, *Wire 101*. Emily created this set of bracelets with chunky silver wire and a selection of large, interesting, showcase beads. This is a great project for those beads in your stash that you only have one or two of...those beads you have been holding on to, waiting for that perfect piece of jewelry to add to...well, this may just be it!

### **Minute Marker 22:45**

Kate reveals Emily's designing trick to this bracelet: she first makes each wired component individually, then takes her collection and arranges them, linking them into a bracelet. Emily chose a really fun selection of Tribal and Trade beads, Czech glass, and Semiprecious Stones.

Heishi spacers and smaller beads can help to keep any beads with very large holes steady and in place. Kate demonstrates this stabilizing effect by showing off her own earrings and making a component with Aged Czech Picasso beads surrounding the large-holed Giant Melon bead.



*Emily's bracelets from  
FB Live 1.31.18: Wire 101 With Emily*

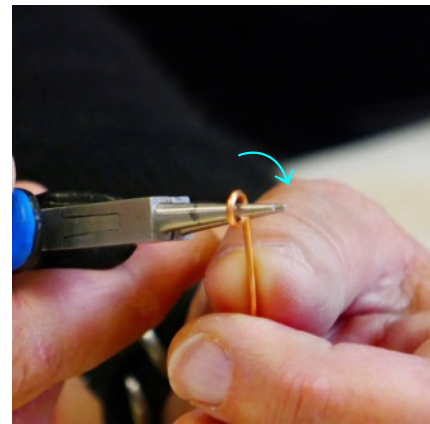


*Kate's earrings, with Little Shadows and Czech Melons stabilizing the large-holed "Wood Carving" serpentine beads from our Vintage Finds collection.*



### **Minute Marker 31:00**

Emily shows us the tools we'll be using today: Round Nose, Chain Nose, and Nylon Jaw pliers...and Kate also likes to use Bent Nose pliers! We'll also need our Xuron Maxi-Shear Flush Cutters to get those perfectly straight cuts in our wire. Once again, Emily reminds us how to get that blunt flush cut! Kate also points out that the Xuron Memory Wire Cutters are a great way to get a flush cut on your larger gauges of wire. Remember, *only* use Memory Wire Cutters on Memory Wire...but you can use them on other wires as well.



### **Minute Marker 37:00**

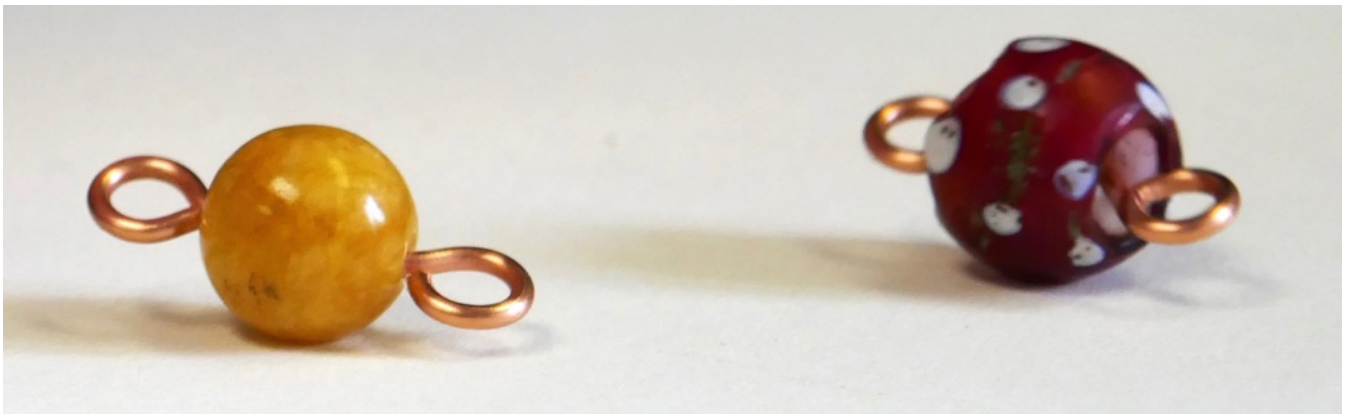
Just like we often talk about a piece needing "air" as we string, we need air in these bracelets as well. We want to make nicely sized wire loops so that our links have ease of movement as they curve around the wrist.

Emily shows two ways to create her simple wire loops. First, she aligns the flush cut end of her wire with the edge of her round nose pliers, then she rolls the wire slowly and gently around on itself until the wire closes in on itself in a perfect loop. Your wire looks a bit like the letter "P" now. Grasp this completed loop and bend it back on its base so it stands perfectly centered atop the straight wire, more like this: ♀



### **Minute Marker 38:00**

Emily adds her bead, flush cuts the wire on the other side of the bead, and makes her simple loop the way we have shown many times: bend the wire at a 90° angle and then roll the wire back on itself to form the loop. This creates that “centered” loop automatically, thanks to that angle we form before making the loop. Now have one complete component! Emily shows a few more simple loops as she makes more.



### **Minute Marker 49:00**

Kate steps in to show what she has been working on... components using differently shaped beads, like our Ashanti Saucers. She also demonstrates how to clean up the edge of the cut wire with an emery board! Clever!

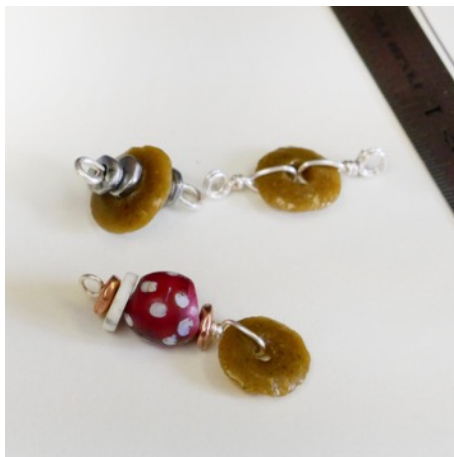
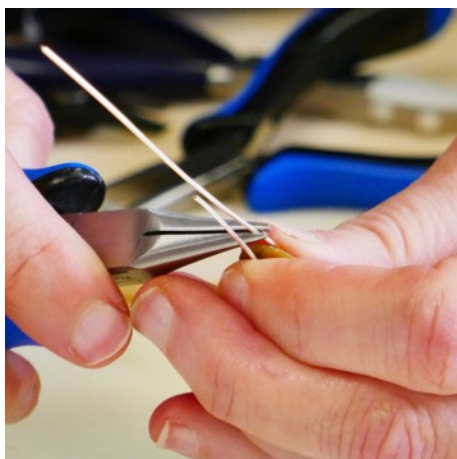


## **Minute Marker 52:00**

The Ashanti Saucers can be made into components in a couple ways, so let's explore! You could string your wire straight through, along with some heishi or small beads to stabilize the saucer, or you could lay it flat. To make it lay flat we'll need to wire it from "both sides."

Kate is making wrapped loops for these components, so she's sizing down to 20G wire...it's close enough to look similar to the 16G wire we're already using but it's more malleable and will give us wrapped loops with ease.

With a 3" piece of 20G wire, Kate slides her saucer on about ¼ of the way down, and bends the wire in a U shape right around the saucer. Much like you'd wire wrap a briolette, we're going to wire wrap this saucer.

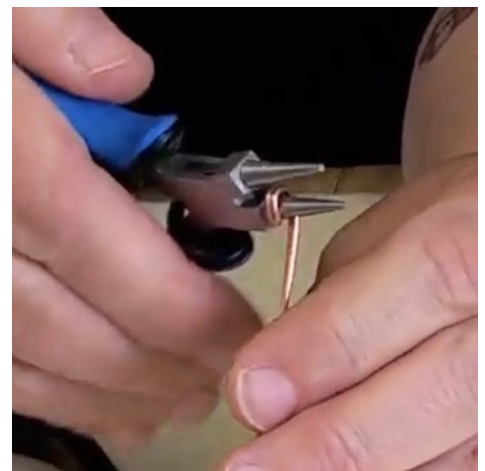


Kate also shows how you can double up your loop, one of her signature wire styles. We've seen her do this in Projects like [Year End Wrap](#) and [Freeform Wire Heart](#). This creates a closed loop, so you'll need to link it to a simple loop in this Project.

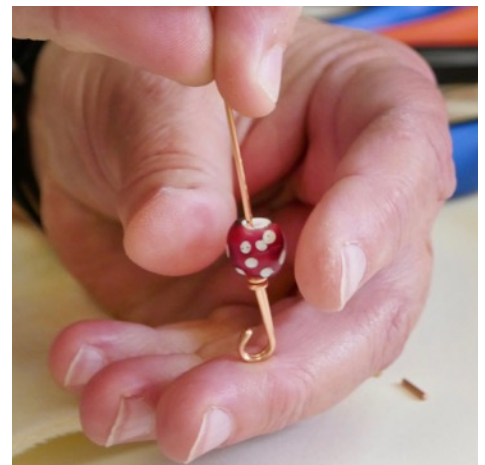
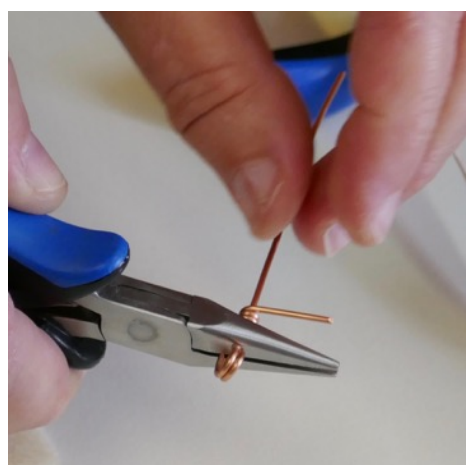
### **Minute Marker 1:02:30**

Meanwhile, Emily has been connecting her components. The ladies are ready to create a clasp, so they measure the almost-finished bracelet on Emily's wrist. They leave lots of extra "ease," as Emily calls it. These beads are large and take up more space than you might expect! So for Emily's 7" wrist we are creating an 8¼" bracelet.

Emily starts to create the clasp. With a piece of 16G wire that's 7" long, she uses chain nose pliers to grasp about 3" down the wire. Emily makes a bend in the wire around the jaw of the chain nose, then closes it completely together by gently pushing that bend closed from the outside with her chain nose pliers. Next, use the largest part of your round nose pliers to bend a not-closed hook.

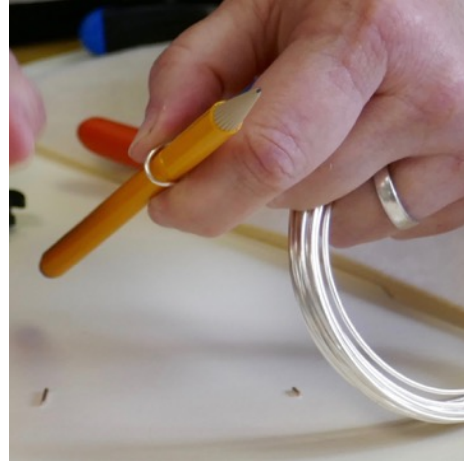


Go back to your chain nose pliers and grab just below your hook. Using the shorter tail of wire, create a wrapped coil just like you would when making a wrapped loop. Emily makes about 3 wraps, cuts the tail off, and adds a bead. Slide the bead right on and you can make a simple loop on the other side and connect this to your bracelet just like any other link.



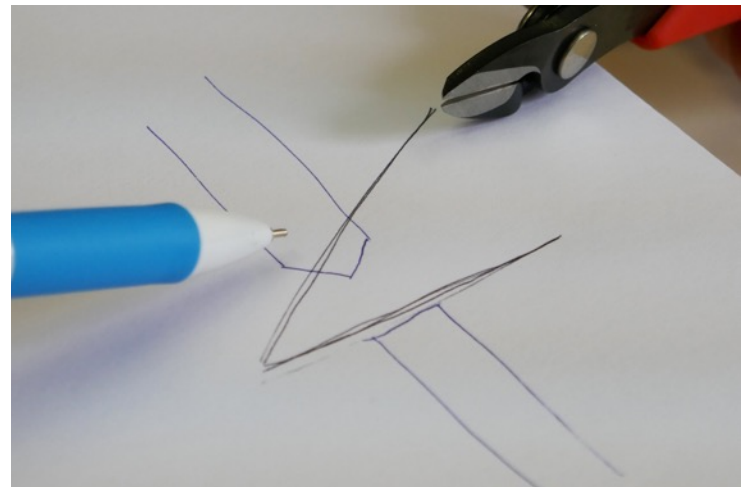
### **Minute Marker 1:15:00**

To show one more way to work with the Ashanti Saucers, Emily shows how you could make a simple loop to connect them as well. Since our round nose pliers aren't large enough to make a loop wide enough to fit around the saucer (see below, left), Kate uses a pen to make a loop. Anything round can work...an voila! Larger loops that fit!



### **Minute Marker 1:08:45**

Something the ladies stressed throughout this episode is what side of the flush cutters to cut with. Emily draws a quick doodle to show how the flush cutters work. When you cut a wire, the top end will end at a point, the bottom will end flush and flat. You want to always have a flush end, so you will be trimming those



Kate reminds everyone to keep in mind that while she and Emily can make it look easy on the show, working with wire is something that really does take some time to get used to. This is a learned technique, and you'll get better and better the more you practice and work with wire. Kate and Emily have been doing this for quite some time! So don't get frustrated. In no time you'll become more familiar with wire. You'll be eyeballing your lengths and loops before you know it!

Thanks so much for watching and learning with us this week! For even more on making your own wire clasps, check out [Kate's Free Tip Friday](#), which aired just a few days after this episode. In it, she shows more techniques and tricks...and she breaks out the chasing hammer!



Fun! See you next week, gang!

### Links to Us...

[beadshop Facebook Page](#)

[beadshop Twitter Page](#)

[beadshop on Instagram](#)

[The Bead Table Blog](#)

[Newsletter Sign Up](#)

[FB Community-The Bead Table](#)

[info@beadshop.com](mailto:info@beadshop.com)

[kate@beadshop.com](mailto:kate@beadshop.com)

[janice@beadshop.com](mailto:janice@beadshop.com)

[emily@beadshop.com](mailto:emily@beadshop.com)

[drea@beadshop.com](mailto:drea@beadshop.com)

### Links to Events and More...

Last Week's Facebook Live Broadcast: [Teardrop Boho Earrings](#)

[Facebook Live Youtube Playlist](#) & [FB Live Archive Page](#) on beadshop.com

[Free Tip Friday YouTube Playlist](#) & [FTF Archive Page](#) on beadshop.com

[Bead and Button Show](#)

[Bead & Button 2018 Class Preview with Kate & Janice](#)

[Beads Baubles and Jewels](#)

[Bead Fest Philadelphia Homepage](#)

[Best of Both Worlds Bead Retreat Info](#)

[Stitches Events Page](#)

[A Verb for Keeping Warm](#)

[Yarn on the House / YOTH](#)

[Woolly Walkers for Kate & Ems Punch Needle projects](#)



## Links to This Project's Ingredients...

[Chunky Wire Bracelet](#)  
[Recipe Page](#)

### [Silver Collector](#)

1 Spool [16G Craft Wire- Silver](#)  
3 [Ivory Mercury Roller Beads](#)  
1 Pkg [Currents- Mist](#)  
1 Pkg [Currents- Black Squid](#)  
1 Pkg [No Ending](#)  
2 Pc [King Shadows- Silver](#)  
1 Pkg [Happy Donuts- Pewter](#)

### [Copper Trade](#)

1 Spool [16G Craft Wire- Copper](#)  
1 Pkg [Ostrich Shells](#)  
1 Pkg [10mm Dappled Serpentine](#)  
1 Pkg [Red Talisman](#)  
2 Pc [King Shadows- Antique Copper](#)  
1 Pkg [Happy Donuts- Copper](#)  
1 [Old Pottery- Vase](#)

*You will also want to have: [Xuron Maxi Shears](#),  
[Chain Nose Pliers](#), [Round Nose Pliers](#), and [Nylon Jawed Pliers](#).*



## **Links to Learning, Products, & More...**

[Class Handouts and Skill Builders](#)

[Main Project Page](#)

[Beadshop Recipes Page](#)

[FB Live: Wire 101 With Emily 1.31.18](#)

[FB Live: Wire Wrapping 1.29.17](#)

[How to Make Rosary Loops with Beads Skill Builder](#)

[How to Wire Wrap a Briolette Skill Builder](#)

[How to Wire Wrap a Bead Unit Skill Builder](#)

[Craft Wire](#)

[Tribal and Trade Beads](#)

[Vintage Finds](#)

[Shadows Metal Beads](#)

[Czech Glass Melon Beads](#)

[Aged Czech Picasso Beads](#)

[Giant Melons in Serpentine](#)

[Wood Carving Beads](#)

[Ashanti Saucers](#)

[Tools](#)

[Round Nose Pliers](#)

[Chain Nose Pliers](#)

[Xuron Maxi-Shear Flush Wire Cutters](#)

[Nylon Jaw Pliers](#)

[Bent Chain Nose Pliers](#)

[Xuron Memory Wire Cutters](#)

[Mini Rulers](#)



The first question asked each week on  
Facebook Live...

## "What are you wearing?"

Kate and Emily's  
Punch Needle brooches  
with magnetic backs.  
They made these at the  
Stitches event as a make  
and take from Woolly  
Walkers



Kate's ring, a torch enameled piece  
she made. In her signature mixed  
metal style, with a split shank, and a  
copper star and a bezel-set  
turquoise stone in a sea of red  
enamel...gorgeous!

You know how Kate likes  
a statement ring!



Emily's necklace, a metal clay pendant with some riveted and "stapled" pieces. Beautiful from the front and the back, this steampunk piece is elegant and fun!



Kate's earrings, which were discussed early on in the episode to show how to stabilize large-holed beads. Kate madder own earwires, but the rest of the ingredients are:

Wood Carving Serpentine Beads  
Sapphire and Bronze 6mm Czech Melons  
Hematite Matte Silver Cut Cubes  
Falling Charms in Silver  
22G Silver Craft Wire  
Kate-made earwires