

ONLY AT  
*beadshop.com*<sup>®</sup>  
*.....guiding and inspiring you with projects and products*

facebook LIVE: 11.08.17

Beaded Bead Stacks



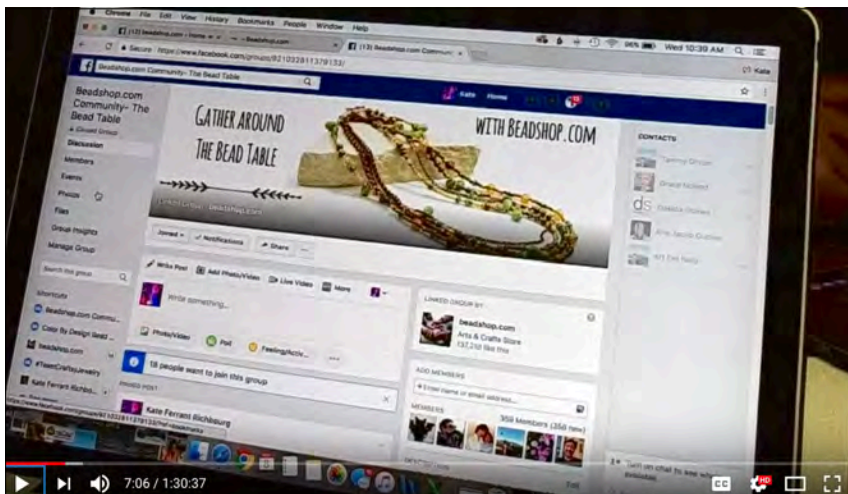


Hi Everyone!

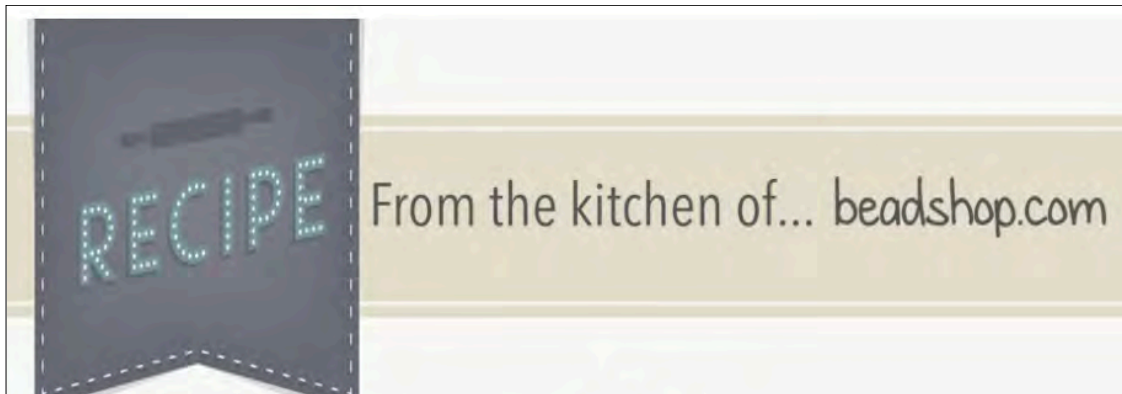
This week on Facebook LIVE, Kate combined one of her favorite bead stitches, Peyote, with simple stringing on Stretch Magic to make stunning, show-stopping bracelets. Then, to layer more magic in, Emily demonstrated how this beaded bead can be used to embellish a tassel. Both artists shared with us concepts that will boost our skill levels and design savvy, and they can be applied in many different jewelry projects. Fun!

We hope you enjoy watching this Facebook LIVE episode.

The project learning begins at **Minute Marker 30:00**, if you want to skip ahead.



Are you interested in joining the private group of friends of beadshop? We'd love to have you! [Click here](#) to learn more.



Let's begin with the materials you need. Kate and Emily selected an 11/0 Miyuki Japanese Seed and an 11/0 metal seed bead, but, as both indicated, you could also use Delicas in place of the Miyuki 11/0.

In addition to Czech Glass Rondelles, Kate decided to add in Saturn Beads on either side of the beaded bead for an extra artisan touch.

And, whether you begin with one of our project Ingredient Lists or you go off the Recipe Card, it's pretty hard to not pick a winning combination.

- 1 Spool Stretch Magic Clear Elastic .7mm
- 1 Spool Fireline- 4lb Crystal or Smoke
  - 1 Strand Czech Glass Rondelles
  - 1 Tube 11/0 Miyuki Seed Beads
  - 1 Tube 11/0 Metal Seed Beads
- 1 Pkg Size 10 Beading Needles and Flexible Eye Needle
  - 1 Tube GS Hypo Cement

You will also want to have: Thread Snips, Beeswax, a Beading Mat, and Triangles



Next week on Facebook Live, Kate and Emily inspire us to stack our beaded stretch bracelets with coordinating ladder bracelets.

How fun! Be sure to watch.



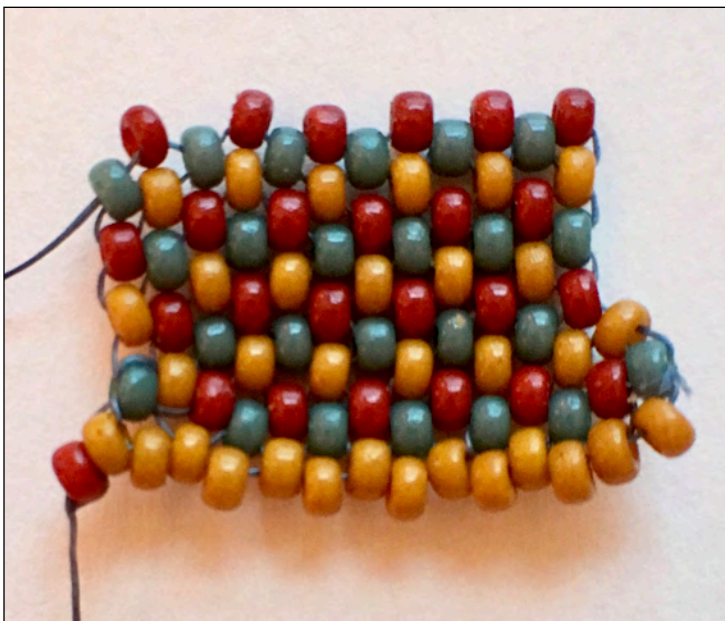
### **Minute Marker 30:00**

After sharing all kinds of different permutations of color combinations, Kate and Emily get down to sharing how to make a flat, even count Peyote Stitch Bead.



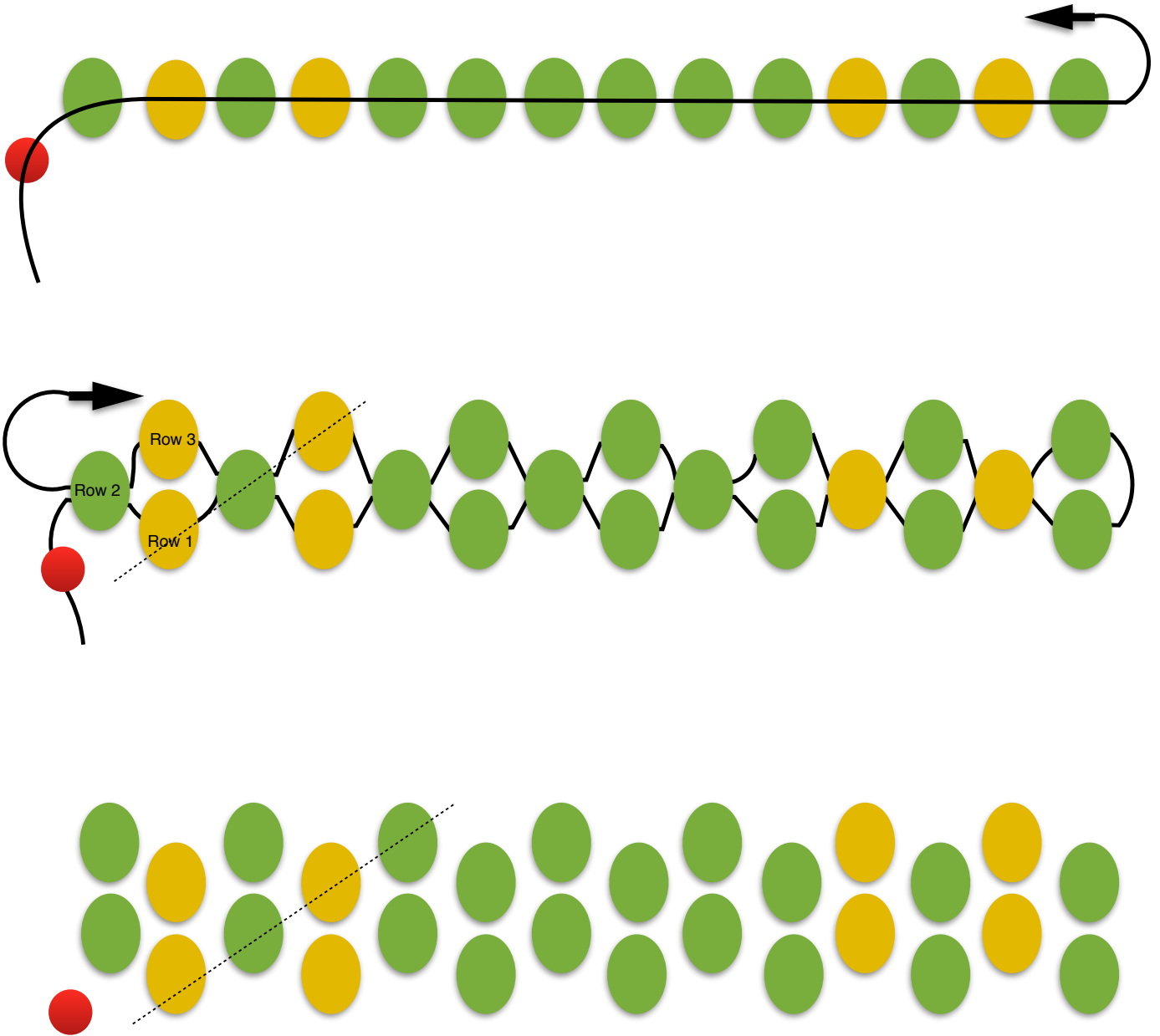
Our designers chose 4lb. Fireline for two reasons:

1. The wear and tear Kate thought the beads would take on a bracelet and
2. the abrasive quality of metal seed beads against the thread could be an issue, and Fireline protects your stitches.
3. Fireline will also give your weaving more body and, in the case of a beaded bead, will lend more weight to it.



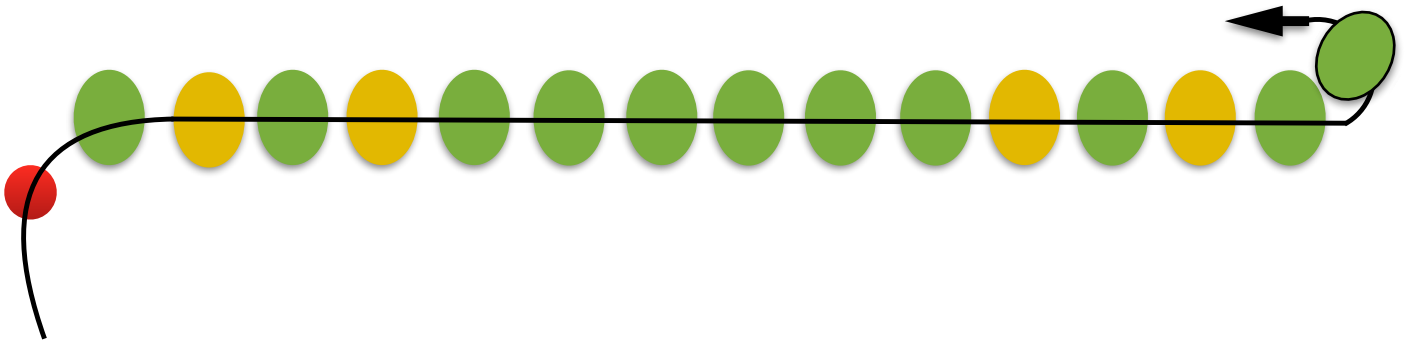
I feel like I, Janice, am the ideal person to write Episode Notes this week. Honestly, I haven't done Peyote Stitch since 1990! So, to follow along, I decided to make a sampler. I was so confused about Row 2. When to add a bead...how did Row 1 become Row 2? I couldn't really understand until I tried it. As you can see, I made LOTS of mistakes, but by doing this, I found my way.

As much as Peyote is Kate's favorite seed bead stitch, our Queen of all things Seed Beads is Emily. So, when I was following along with the video (yes, it is hard to see grey seed beads and grey metal beads!), I was able to text Emily and say I really needed more information to write Episode Notes. She happily obliged with a new graph:

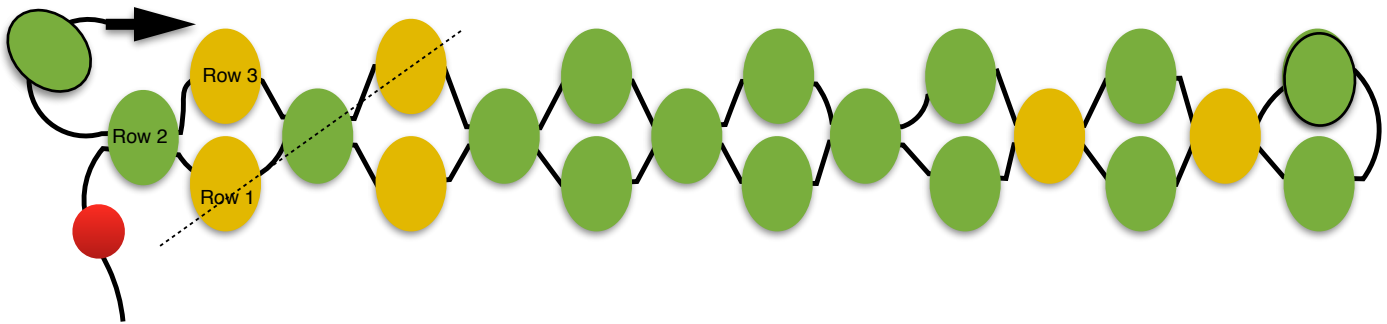


What I still needed help with was understanding exactly where I added a bead, so the next page has this chart with my notes and markings on it!

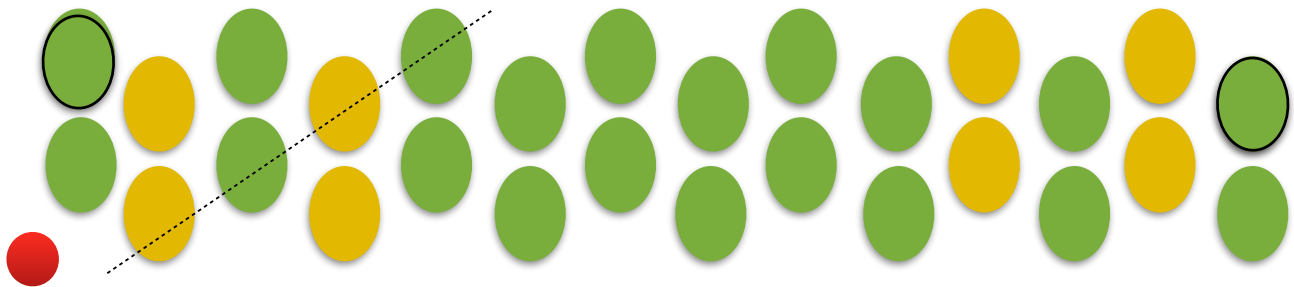
Add a green bead before you go back through the first yellow bead



Add a green bead before you go back through the first yellow bead



The added green beads are outlined in black. All you do is continue this pattern.



And all of a sudden it was perfectly clear to me!

It's so interesting how we all learn, isn't it?

Well, now that we've straightened that out, let's begin by:

1. Cutting about 1¼ yards of Fireline.
2. Thread a Size 10 English Beading Needle.
3. String a stopper bead about 7 inches up from the tail.
4. String on 14 beads in your pattern of glass and metal seed beads.

The total number of rows you'll be stitching to make a bead like Kate's is 16 rows of 14 beads each with a 16th row being the Zipper Row you add to complete the beaded bead. To count how many rows you've done, you can count your beads on the diagonal or add up the number of outside beads you have, and that will tell you how many rows you've done.

The Mantra for Peyote is:

Pick Up a Bead

Skip a Bead

String through a Bead



At **Minute Marker 47:00**, Emily talks more about how the beads line up into your pattern. Both Emily and Kate finding Even-Count Peyote easier to do. "Even Count" is when the number of beads you have on your row is an even number, like this photo which shows 14 beads (don't count the stopper bead).



At **Minute Marker 56:00**, Kate finishes up her beaded bead, she shows us how the beads need to line up like zipper teeth in order to stitch them together. We apologize for the confusion in the video about row count. It's been a long couple of weeks for Kate with traveling and teaching! For this project you want to stitch 16 rows to make this bead. But, if you're wanting to make a bigger bead or a longer bead, the formula for bead count for Even Count Peyote:

Even number of beads you string on starting with your first row.  
Even number of rows you do in length.

When you check to see if you have enough rows, check to see if the beads line up like teeth of a zipper. If you have the right amount, they should "click" into place and all you need to do is thread the beads together.



To secure the threads into your bead, weave your needle and Fireline back through your bead rows weaving in a zig-zag pattern to create a secure ending. No knotting needed! Then, remove the stopper bead and repeat this with the tail from the start. Cut both excess tails with thread snips or flush cutters.





### **Minute Marker 1:10:04**

Kate shares her thoughts with Emily about doubling over the .7mm Stretch Magic.

The .7mm is strong enough to use it singly, but if the beads will fit on doubled SM without too much effort, Kate recommends it, and do it using a Flexible Eye Needle.



Using a Saturn Bead on either side of the beaded bead creates a cap effect. The shape of the Saturn Bead—with its pointy end—allows it to sit firmly inside the beaded bead and helps it stand up on the Stretch Magic. So, if your Peyote Bead seems to be sinking on your thread, it can be because the inner opening needs a bead on either side with a pointy end to keep it balanced in place.



To close off the Stretch Magic securely, at **Minute Marker 1:12:13**, Emily demonstrates her surgeon's knot married with an overhand knot. She then adds a drop of glue to the knot and pulls the knot away from the Peyote Bead and into the Saturn Bead. This will really be secure. Allow the glue to dry a few hours and then cut away your Stretch Magic tails.



### **Minute Marker 1:05:13**

This week we had the added bonus of watching Emily create a Peyote Bead to embellish around a tassel. Does the tassel look familiar?



Last week (11.03.17) on Free Tip Friday, Kate made this tassel with her mom, Guin, at their quilt retreat. You have to watch!



In today's Episode, Emily took that tassel and raised the artisan scale by beading around the silk wrap. Watch how she does it and also shows us her Picot Technique for giving it even more style.

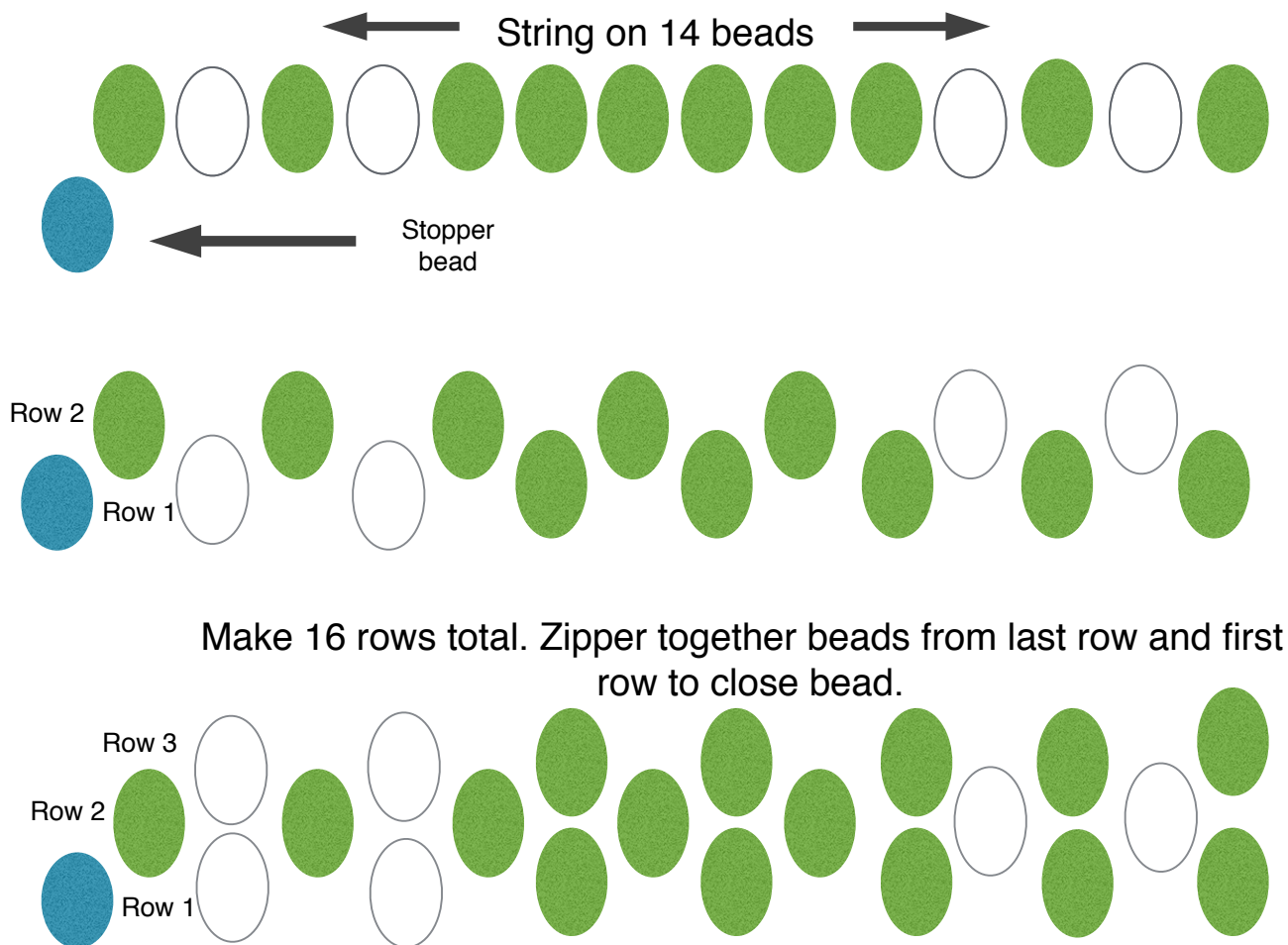


Well, another Facebook LIVE episode is ready for the archives. We hope you enjoyed today. Next week we're going to build on stacks and do some laddering. We're so glad you could join us. Stay connected...we love to hear from you so don't be shy about emailing us your questions and queries...that's what we're here for.

Happy Beading!



Online we showed a chart that mistakenly said 15 rows and a zipper row... what we meant to show you was this:



Emily has asked me to mention the following tips for counting rows:

1. Count the diagonal from the first bead *next to* the stopper bead all the way up to the last bead in the opposite corner.
2. Count and add up the outside bead on each row going up and then coming back and that tells you how many rows you have.

No matter how many rows, if you're ready to zipper:

1. Try connecting the first row and last. Are they opposite teeth so they can be zipped?
2. The tail at the beginning by the stopper bead is in the lower left. The tail with the needle is coming out the top bead on the right (on the diagonal), so you can zip!

## Links to Us...

[beadshop Facebook Page](#)

[beadshop Twitter Page](#)

[The Bead Table Blog](#)

[Newsletter Sign Up](#)

[New beadshop.com Community-The Bead Table](#)

[info@beadshop.com](mailto:info@beadshop.com)

[kate@beadshop.com](mailto:kate@beadshop.com)

[janice@beadshop.com](mailto:janice@beadshop.com)

[emily@beadshop.com](mailto:emily@beadshop.com)

[drea@beadshop.com](mailto:drea@beadshop.com)

## Links to Events and More...

[Last Week's Facebook Live Broadcast: Textile Looming](#)

[Previous Facebook Live Broadcasts](#)

[Facebook Live Youtube Playlist](#)

[Free Tip Friday: Make Tassels with Kate](#)

[Free Tip Friday Youtube Playlist](#)

[New beadshop.com Community-The Bead Table](#)

## Links to This Project's Ingredients...

[Beaded Bead Stacks Project Page](#)

[Recipe Page](#)

### [Morning Mist](#)

1 Spool [Stretch Magic Clear Elastic .7mm](#)

1 Spool [Fireline- 4lb Crystal](#)

1 Strand [Heather Opalite Czech Glass Rondelles](#)

1 Tube [11-152FR Matte Trans. Grey AB 11/0](#)

1 Tube [11/0 Metal Seed Bead Matte Zinc Plate](#)

1 Pkg [Size 10 Beading Needles](#)

1 Tube [GS Hypo Cement](#)

### [Golden Hour](#)

1 Spool [Stretch Magic Clear Elastic .7mm](#)

1 Spool [Fireline- 4lb Crystal](#)

1 Strand [Light Colorado Czech Glass Rondelles](#)

1 Tube [11-2022 Matte Op. Antique Beige 11/0](#)

1 Tube [11/0 Metal Seed Bead Gilding Matte](#)

1 Pkg [Size 10 Beading Needles](#)

1 Tube [GS Hypo Cement](#)

### [Sunset Bronze](#)

1 Spool [Stretch Magic Clear Elastic .7mm](#)

1 Spool [Fireline- 4lb Crystal](#)

1 Strand [Bronzed Copper Czech Glass Rondelles](#)

1 Tube [11-133FR Matte Trans. Topaz AB 11/0](#)

1 Tube [11/0 Metal Seed Bead Antique Copper](#)

1 Pkg [Size 10 Beading Needles](#)

1 Tube [GS Hypo Cement](#)

## Links to Learning, Products & More...

[Class Handouts](#)

[Skill Builders](#)

[Seed Bead School](#)

[Poetry Bracelet Project](#)

[Peyote Stitch Bracelet Project Page](#)

[Stretch Therapy Bracelet Project Page](#)

[Free Tip Friday: Make Tassels with Kate](#)

[Tricks to Laddering](#)

[First Laddering and Infinity Stitch FB Live](#)

[How to Ladder Skill Builder](#)

[Mosaic 4-Wrap Bracelet Project](#)

[Infinity Stitch Skill Builder](#)

[11/0 Seed Beads](#)

[11/0 Metal Seed Beads](#)

[Czech Glass Rondelles](#)

[Awl For One Tool](#)

[Delica Seed Beads](#)

[November Seed Bead Mix: Pecan Pie](#)

[FireLine](#)

[Beeswax](#)

[GS Hypo Cement](#)

[Clampers Metal Clips](#)

[Stretch Magic](#)

[Chain Nose Pliers](#)

[Xuron Thread and Cord Scissor](#)

[Size 10 Seed Bead Needles](#)

[Czech Glass Saturn Beads](#)

[Tassels](#)

[Foam Bead Mats](#)

[Magnetic Needle Cases](#)

[Organza Gift Bags](#)

[Ear Wires](#)