

facebook LIVE: 8.30.17

Leather and Looming



Welcome to Facebook LIVE with Kate Richbourg and Emily Miller. In this episode, our designers give us some great tips about looming, gluing, and creating artisan jewelry. So, don't go anywhere! Grab your favorite loom, some beads, and a bit of leather...

If you want to go straight to the learning and skip the chit-chat, fast forward to Minute Marker 16:00.



Welcome to Episode Notes for Facebook LIVE August 30, 2017. This week Kate combined one of her very favorite techniques, looming, with a product she is passionate about, leather. And, we did something a bit different, Janice was live from the East Coast on Kate's phone. If you look closely, you can see me (Janice) in the foreground...

Anna S.



We began with some very beautiful samples from Anna S. and Lisa D. Both created their own versions of Emily's Brick Stitch. The button in each one is definitely the star. Great job! You can also see more submission on our blog, The Bead Table.

Lisa D.



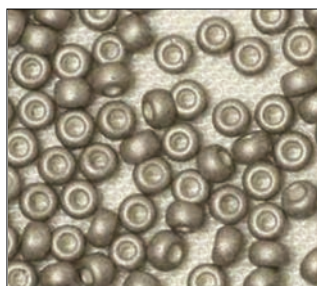
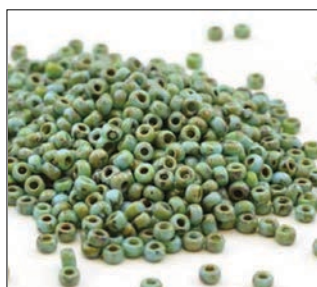
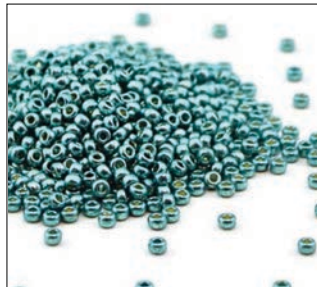
Kate begins with materials and how the options are endless...almost any combination will net a wonderful design. Pick an 11/0 seed bead in metal. Select an 11/0 Miyuki Glass seed bead. Decide on your 5mm strap leather, and, last but not least, pick a magnetic clasp with a 10-12mm opening that will accommodate the looming and leather. The results, no matter what you choose, will be awesome!

Here are a few options that came to mind...

11/0 Metal Seeds



11/0 Miyuki Seeds

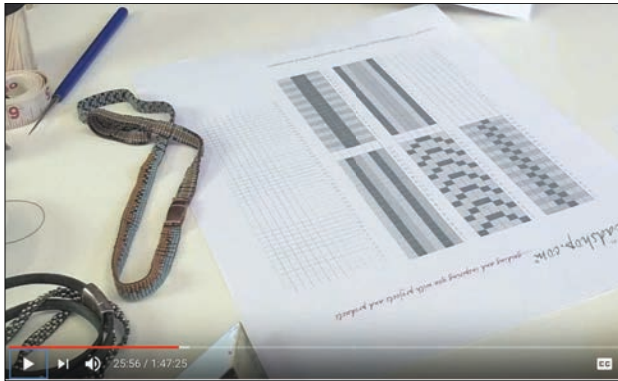


5mm Strap Leather



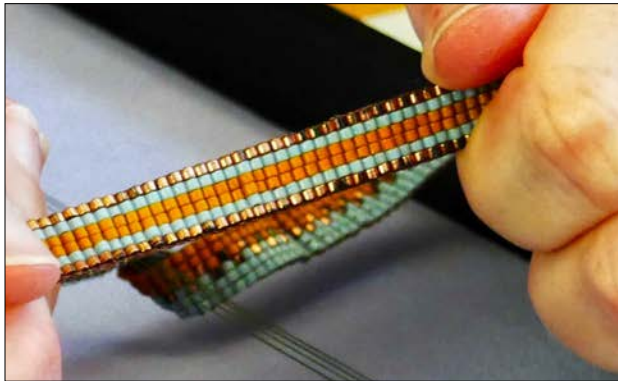
Magnetic Clasp





Minute Marker 25:56

Kate shares her seed bead chart. You'll find a chart at the end of these notes that you can print out. You can also see more great stuff on our blog, [The Bead Table](#).



Kate also talked about looming with [Delicas](#), also an 11/0 seed bead made by Miyuki. However, instead of being a rounded bead, Delicas are more like a tube; they are straight-across flat at the hole, so when they're loomed, they fit together to form a column.

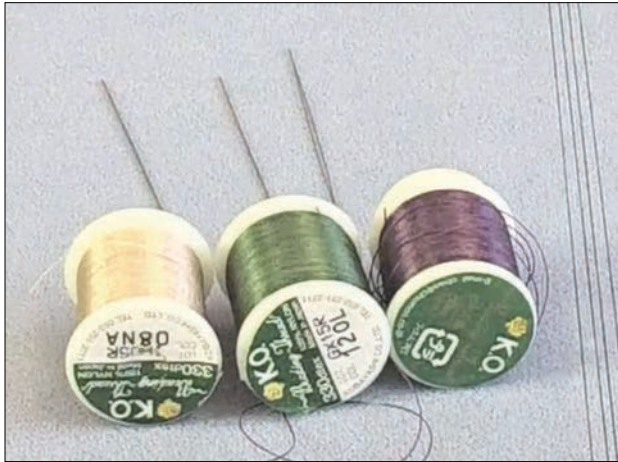


Follow along as Kate demonstrates how she fills out a grid using symbols for colors, rather than color. However, if you are really visual, print out more than one copy of the chart...get out your colored pencils and get coloring!



Minute Marker 37:00

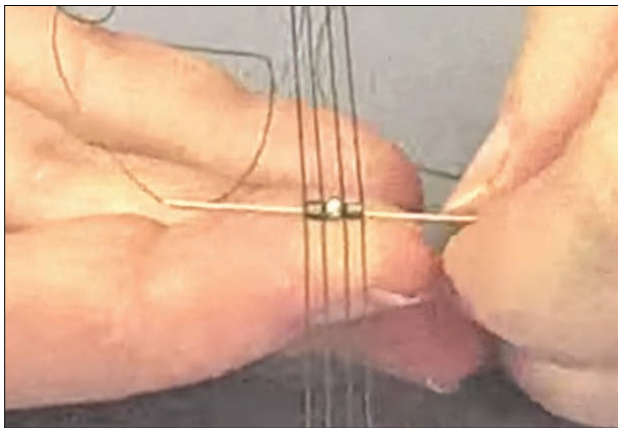
It's really easy to set up the Deep Dish Design Board for Looming...you don't need a fancy, expensive loom! Watch how Kate and Emily get the warp set up.



For looming seed beads, you have lots of choices of needles and thread. Kate and Emily use KO thread, but you could also loom with Micro C-Lon, C-Lon D, Superlon D, Nymo, or even Fireline. You want a thread that is strong yet thin. And, for your needle, English Beading Needles in Size 12 or 10, Jewel Loom Needle, or even a Big Eye Needle will work great.

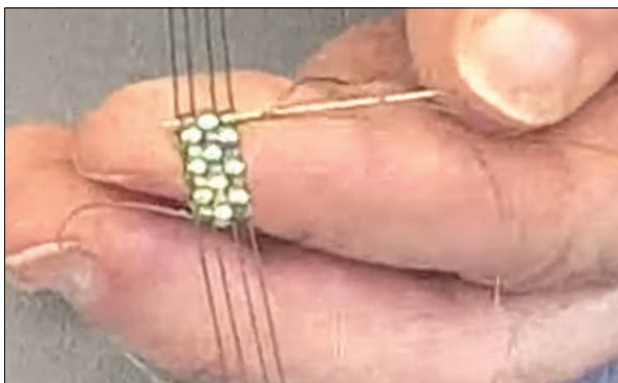
Minute Marker 50:00

Kate starts looming her beads. An old trick she learned was to begin looming in the center, rather than at one end. If you have a pattern that has to fit into a certain dimension, starting in the middle and working out in either direction helps ensure you won't overshoot the pattern.



Minute Marker 55:00

One of our viewers, Yancy, shared with us on Facebook LIVE a tip for locking in the thread and not splitting the threads as you weave back through: take your needle back through eye *first*! Very clever!



Minute Marker 1:03:20

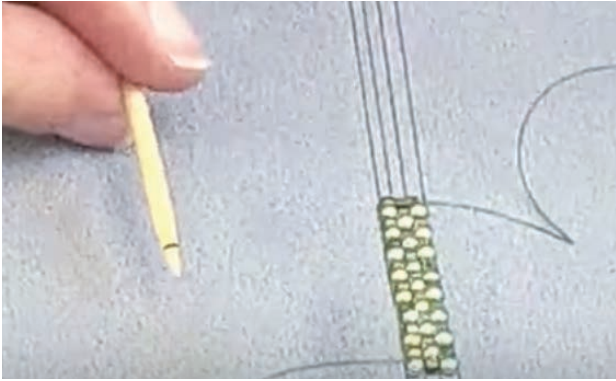
Kate demos how to add a thread. This is so important...who wants to work with yards of thread that slow us down and gets tangled? Not us!



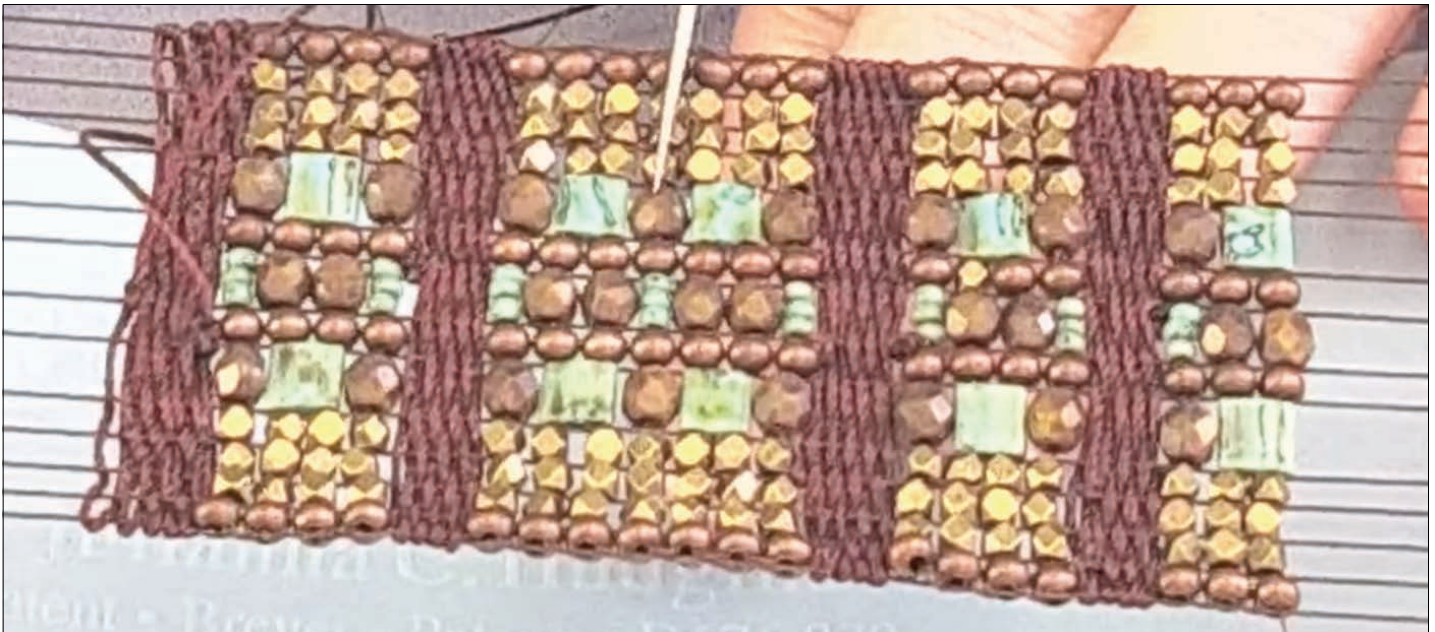


Minute Marker 1:09:30

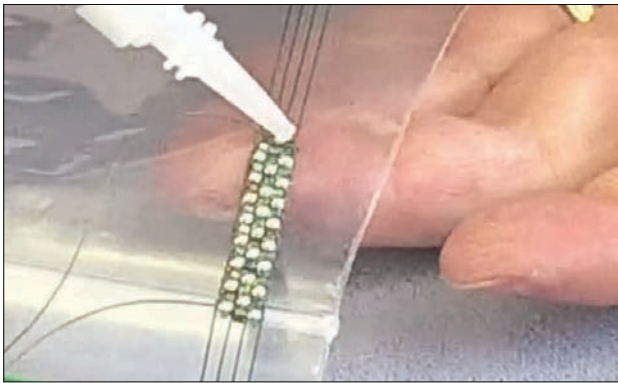
At the end of your piece, you will want to add the weft, which are rows of thread woven back and forth *without* beads. Kate shows us how to bring the warp threads in a bit by adding a last row of Delicas. You can also achieve this by cinching the width of the weft threads as you weave them back and forth. Don't forget to leave a bit of air between the beadwork and the rows of weft. "AIR!!!!"



The weft threads should be no deeper than the channel opening in your clasp. Kate demonstrates with a mark on a tooth pick to indicate how deep the opening of her clasp is.



One of my favorite examples of the weft being used as a design element is this sample Kate started. It's so organic and interesting. Each section of beadwork is finished and secured before creating the weft. Then C-Lon is woven back and forth. To insure the C-Lon doesn't unravel, start wefting in the middle of a row, rather than at the side. When you go to end, use a Big Eye Needle and take one tail at a time and thread the end into the middle of the weft rows adding just a tiny dab of glue on the portion that will live inside. Repeat the other tail and then cut the excess C-Lon.



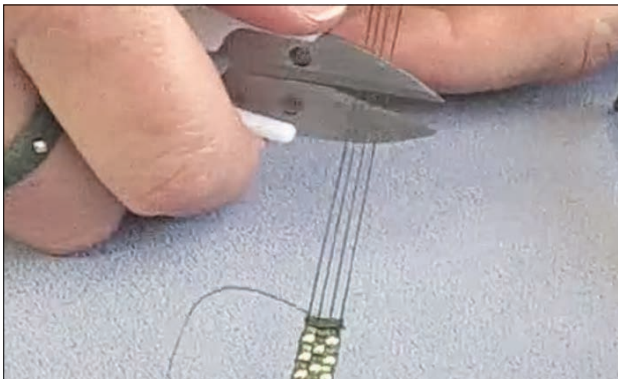
Minute Marker 1:22:00

Watch how Kate carefully adds her Zap Glue to the warp threads making sure the glue doesn't drift down to the beads.



Minute Marker 1:24:30

While the glue is setting up, Kate prepares her leather for gluing into the clasp opening. Our recommendation is to glue the leather into the clasp first. Because it's more rigid than your beadwork, getting it perpendicular and even is critical.



Minute Marker 1:25:00

Clip your beadwork off the board when you're ready. And then get close to the weft and give your warp threads a crew cut. (Minute Marker 1:26:45)



Watch as Kate carefully glues in both the leather and the beadwork. You want to double check the beadwork isn't looped or twisted before you glue in the second side.



Before we end, we have to chat just a bit about Emily's Soft Flex necklace. Her little tip of spacing each "bead" with similar spacing of small little beads is really worth storing away for another project. When you're not sure how to incorporate a long, random group of beads, try what Emily did: She used a spacing pattern of 5 beads and then a pearl or focal bead. It really works!



And Kate showed you what to do with those extra scraps of leather just a few days later on [Free Tip Friday](#), so be sure to watch!



There is so much learning this week! We hope Leather and Looming opens doors to your creativity. Don't be afraid to experiment, try new colors, make something with your leftovers and just get your creative juices flowing.

See you next week!

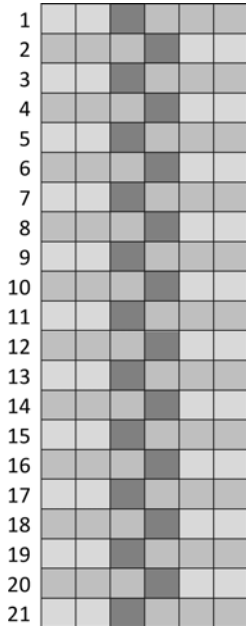
~Kate and Emily (and Janice on the iPhone)



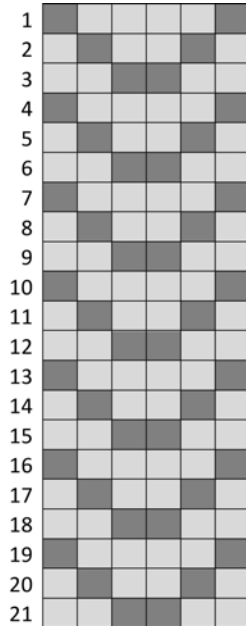
Would you like to make a Tiara and enter it to win?

Deadline is September 30, 2017. It's so much fun and we're giving away prizes!

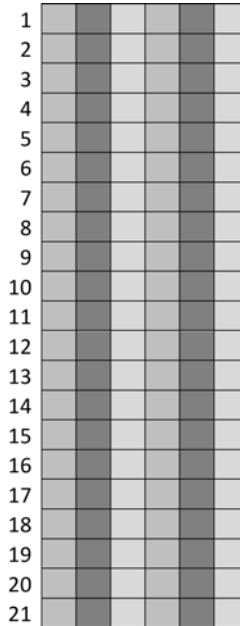
Zipper Pattern



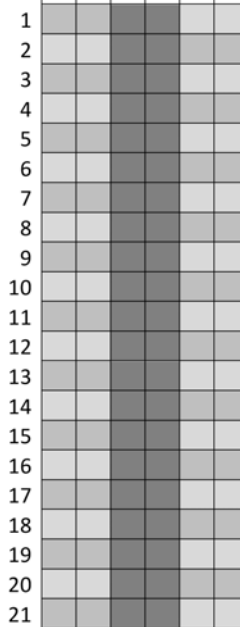
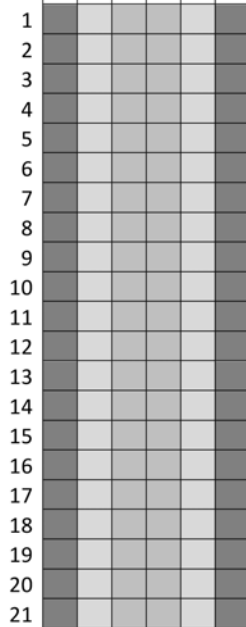
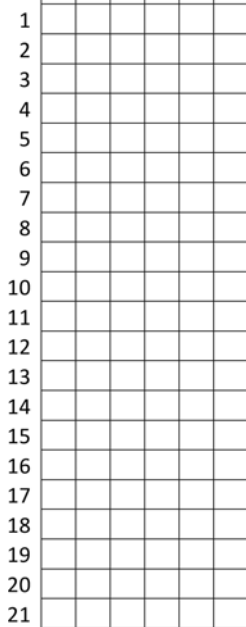
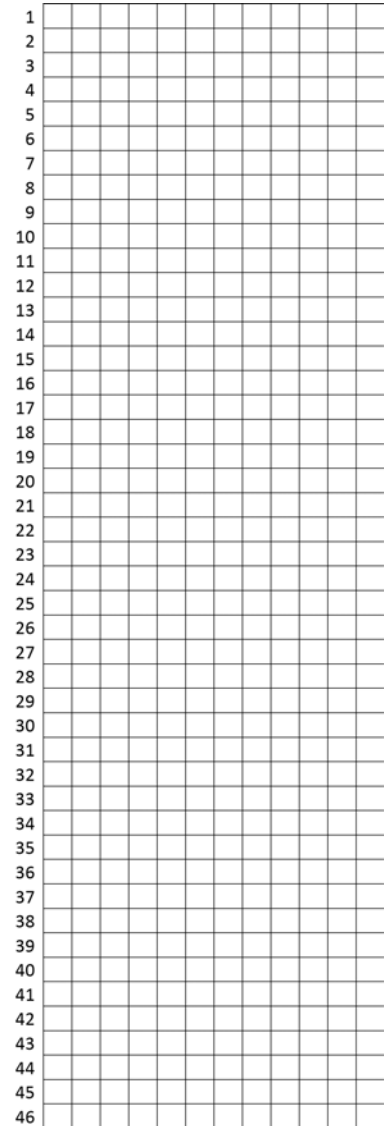
Chevron Pattern



Stripe Pattern



Blank Grid 12 beads across



Blank Grid

Stripe Pattern 3

Stripe Pattern 2

11/0 Delica Seed Beads

6 beads across = 3/16"

16 rows long = 1"

11/0 Seed Beads

12 beads x 12 rows = 5/8" x 1"

8/0 Seed Beads

12 beads x 12 rows = 1" x 1 3/8"

6/0 Seed Beads

12 beads x 12 rows = 1 3/8" x 2"

Ivy on Stone



Italian Tapestry



Nautilus



Links to Us...

[beadshop Facebook Page](#)
[beadshop Twitter Page](#)
[The Bead Table Blog](#)
info@beadshop.com
kate@beadshop.com
janice@beadshop.com
emily.beadshop@gmail.com

Links to Events...

[Last Week's Facebook Live Broadcast: Summer of Love Earrings](#)
[Previous Facebook Live Broadcasts](#)
[Facebook Live Youtube Playlist](#)
[Free Tip Friday Youtube Playlist](#)
[Color By Design Bead Retreat Information](#)
[Bead Fest Tacoma](#)
[Kate's Class Schedule at Bead Fest Tacoma](#)
[Tiara Challenge](#)

Links to This Project's Ingredients...

[Leather & Looming Project Page](#)

[Nautilus](#)

- 1 [Antique Brass Bountiful Magnetic Clasp](#)
- 1 Spool [Natural KO Thread](#)
- 1 Meter [Natural 5mm Stitched Strap Leather](#)
- 1 Tube [Sparkle Beige-Lined Crystal Cut Delica Seed Beads](#)
- 1 Tube [Gilding Matte 11/0 Metal Seed Beads](#)

[Italian Tapestry](#)

- 1 [Antique Copper Bountiful Magnetic Clasp](#)
- 1 Spool [Dark Purple KO Thread](#)
- 1 Meter [Purple 5mm Strap Leather](#)
- 1 Tube [Dark Metallic Raspberry Cut Delica Seed Beads](#)
- 1 Tube [Antique Copper 11/0 Metal Seed Beads](#)

[Ivy on Stone](#)

- 1 [Silver Bountiful Magnetic Clasp](#)
- 1 Spool [Dark Olive KO Thread](#)
- 1 Meter [Forest Green with Silver 5mm Dotted Strap Leather](#)
- 1 Tube [Metallic Olive Green Iris Cut Delica Seed Beads](#)
- 1 Tube [Matte Zinc Plate 11/0 Metal Seed Beads](#)

[Links to Products & More...](#)

[Class Handouts](#)

[Skill Builders](#)

[Seed Bead School](#)

[Brick Stitch Bracelet Project Page](#)

[Peyote Stitch Bracelet Project Page](#)

[Tricks to Looming](#)

[Lalique Looming FB Live](#)

[3-Wrap Loom Bracelet Free Tip](#)

[Friday](#)

[Prairie Bracelet Project](#)

[Tapestry Project Page](#)

[Free Tip Friday: Button Rings](#)

[Turquoise/Purple Star Czech Glass Button](#)

[Czech Glass Buttons](#)

[11/0 Seed Beads](#)

[11/0 Metal Seed Beads](#)

[Half Tila Beads & Tila Beads](#)

[8/0 Seed Beads](#)

[Tierra Daisy Spacers](#)

[Delica Seed Beads](#)

[Hexagonal Cut Delica Seed Beads](#)

[Strap Leather](#)

[Magnetic Clasps](#)

[Deer Skin Lace Leather](#)

[6/0 Seed Beads](#)

[Jewel Loom](#)

[Awl For One Tool](#)

[KO Thread](#)

[Micro C-Lon](#)

[Big Eye Needles](#)

[Size 10 Seed Bead Needles](#)

[Jewel Loom Needles](#)

[Beeswax](#)

[Thread Snips](#)

[Zap Glue](#)

[Fine C-Lon](#)

[Regular C-Lon](#)

[4mm Fire Polish Czech Glass Beads](#)

[8/0 Metal Seed Beads](#)

[Shadows Metal Beads](#)

[Ultra Suede](#)

[Xuron Maxi-Shear Flush Cutters](#)

[FireLine](#)

[SoftFlex](#)

[Crimp Tubes & Crimp Covers](#)