



# The New Design Team

1st  
Inspiration Box  
Challenge



**1 Bracelet Kit + 2 Colorways + 4 Designers =**

# Unlimited Inspiration

What started as a twinkle in Kate's eye has quickly blossomed into an excursion of immense proportions. This first Design Challenge was intended as a practice warm-up for getting to know the rules and guidelines. However, the enthusiasm of the team took me by surprise and I had to share the outcome with all of you.

Each designer received the same Color Study project - Danielle and I worked on Meadowland, Faye and Kim tackled Garden Path. As you will see, there really is no limit to creativity. Please join us on our endless journey of design.

Stay tuned... this is just the appetizer!

~ Alley ~







## Designer

# Faye Luxemburg-Hyam

### Challenge Project

Color Study - Garden Path

### Additional Ingredients

CzechMates Tiles - Matte Iris Green  
3mm Melons - Op. Red Bronze Picasso  
Transitions - Antique Copper

### From the Designer's Stash

Czech Glass Button - Purple AB

### Additional Learning

How to Macrame  
How to Ladder  
Infinity Stitch



### Deco

#### From the Designer:

While I was creating this piece, my thoughts turned to the Art Deco period and the volume of gorgeous jewellery, objects of art, architecture, couture, etc that came from that era. I think the shape and colours of the tiles influenced me.

You know how much I love the West County Cuff style so this first piece is a five row cuff. I used the Infinity stitch to do this piece and my tension was a little tight which caused some buckling when the bracelet is laid flat. I have never laddered a cuff and my curiosity will lead me down that path to see how it turns out. I enjoyed designing this cuff.



### Sunday Afternoon

#### From the Designer:

This piece complements "Deco" and was made on a sunny Sunday afternoon in my backyard.





Meandering

**From the Designer:**

Building on Janice's Garden Path got my curiosity stirred and I wondered where does the path lead? I wanted to continue the path adding destinations. You enter along the paver walkway and discover the flower garden. Think peonies, roses or begonias. From there you'll meander through the stone lined cobblestone path to the pond. Take your time crossing the pond and be careful not to slip on the stepping stones! Be sure to pause, toss in a penny and make a wish. Timed properly you'll be able to watch a golden sunset give rise to a silvery moon.



Swinging Bridge

**From the Designer:**

Tapping into the opposite end of outdoor emotions gets your adrenaline pumping as you cross a swinging bridge. I have memories of this from a trip to Montana crossing the Kootenai River. The views are spectacular! This can be worn either as a necklace or as a delicate 4 wrap bracelet.



**Designer**  
**Kim Golias**

**Challenge Project**

Color Study - Garden Path

**Additional Ingredients**

- Micro C-Lon - Peridot
- 11/0 Blush Lined Crystal
- Light Smoky Grey Roller Beads
- Coiled Spacer - Antique Copper
- 8/0 Duracoat Opaque Eucalyptus
- 3mm Melons - Pacifica Watermelon
- 9mm Oval Coil Jump Ring - Ant. Copper
- Clamshell End Tips - Antique Copper

**From the Designer's Stash**

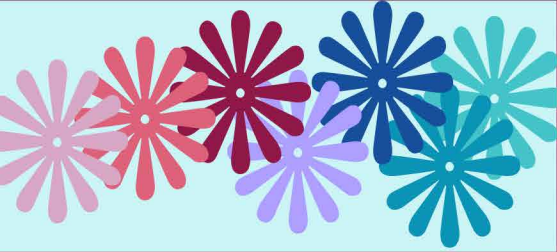
Coiled Toggle – Antique Copper

**Additional Learning**

- How to Ladder
- Infinity Stitch
- How to Macrame
- Wall Knot
- Emily's Float







# Designer Danielle Wickes

## Challenge Project

Color Study - Meadowland

## Additional Ingredients

- KO Thread - Black
- 11/0 Seed Beads - Black
- 8/0 Seed Beads - Opaque Black
- Clasp - Little Lobster, Antique Silver
- 1.5 inch Head Pins - Antique Silver
- Chain - Circle Back, Bright Silver
- Fireline - 4lb Smoke Grey
- Sterling Dot Ear Wires

## Additional Learning

- Tricks to Looming
- Brick Stitch



Bamboo Sticks

### From the Designer:

The idea for this design began when I laid out all the materials. The bugles caught my eye and reminded me of decorative bamboo mats or the wall hanging at my local yoga studio. I recalled how the bugles were stitched in "Heart on My Sleeve" and the design fell into place.



Stained Glass Window

### From the Designer:

This design actually started out as a variation of peyote stitch but just didn't work out. I set it aside for a bit while I finished other pieces. After trying again with the loom, I was quite happy with the result.



Metals & Tilas Fringe

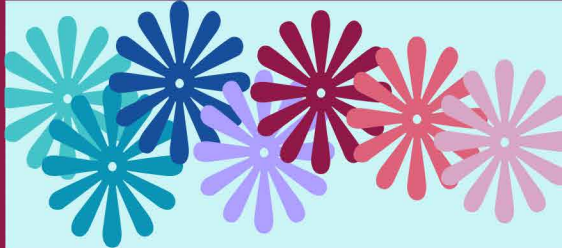
Boho Fringe



### Good Vibes

**From the Designer:**

The colors and selection of materials in the kit drove my desire to create Boho flavored pieces. The contrast between the color of the leather and the glass button produced a very eclectic feel. Since the kit had a variety of components, my "go to" Trails End style was the perfect choice.



## Designer

# Alley Mori

### Challenge Project

Color Study - Meadowland

### Additional Ingredients

- Swirl Button - Antique Silver
- Hibiscus Bead - Violet Brown Wash
- Antique Silver Roller Beads
- 5mm Rondelles - Lavender Mercury
- Clamshell End Tips- Antique Silver

### Additional Learning

- How to Ladder
- How to Macrame
- Wall Knot

### Wild & Free

**From the Designer:**

Another Boho piece using lots of seed beads to create texture. Light and casual, fun for summer.

