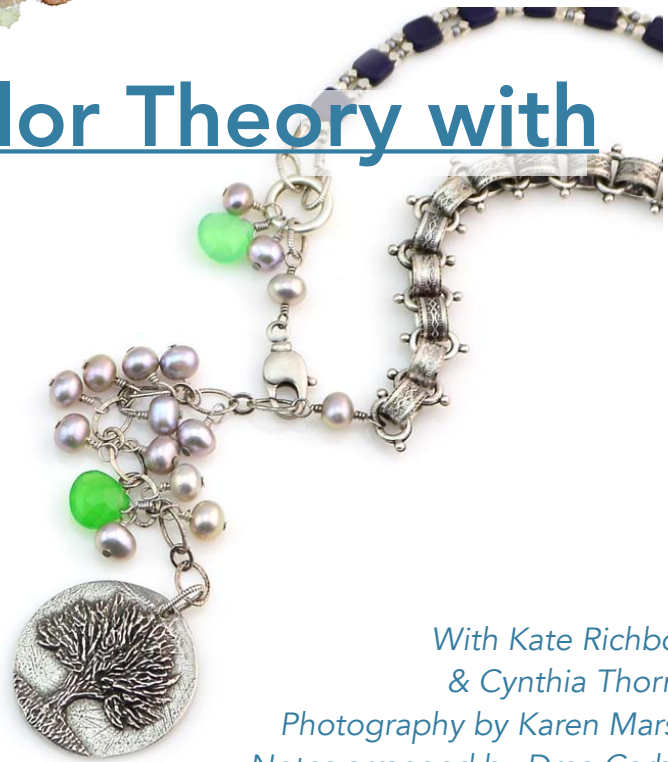


Designing and Color Theory with Cynthia Thornton



*With Kate Richbourg
& Cynthia Thornton
Photography by Karen Marshall
Notes arranged by Drea Carbone*

OMG you guys!! Look who's here! Cynthia Thornton is the artist behind the popular Green Girl Studios line of beads, buttons, and more. An omnicrafter with an incredible eye and imagination, Cynthia has been creating a fantasy world since childhood.

In these two videos we explore so many things! Cynthia's creative process, ideas for working with her pieces, Kate's epic necklace, and more! We did two LIVE shows this day, the first was our traditional Wednesday Beadshop LIVE, and the second was a follow-up "afterparty" a few hours later. Find them both here:

11.13.19 Beadshop LIVE
11.13.19 Beadshop Afterparty

In these notes we'll explore photos and bits of wisdom from both Kate and Cynthia... We'll also check out Kate's Chatelaine Project, at **Minute Marker 40:00**. Enjoy!

A Peek Through Cynthia's Sketchbook...

Even with an alcohol spill, these sketches are something truly fantastic!



Feather Charm



Faerie Realm Pendant



Seek Charm

"Carry a sketchbook with you...usually I just use whatever I have on hand (to draw), almost everywhere I go I have a little teeny watercolor set with me."



Tiny Bunny Charm



Walt Whitman Flower Pendant



Curled Snake Button



“Just imagine...I mean, what if?”



Tiny Bird Charm



Large Mermaid Button



Little Octopus Button

“I write down ideas, because you know what? I’ll probably forget!”

Works in Progress

Cynthia uses wax to create tiny sculptures that will eventually be used to make molds for castings. Many of these pieces have been in the works for weeks, months, even years! Cynthia wants each piece to be not only pretty to look at, but also purposeful. Each open space, hole, strand of mermaid hair...you name it, Cynthia has a reason for putting it in place. It's a very thoughtful design process!

Gotta start somewhere!

"If I don't know what I'm doing, I'll make a shape. I might not know necessarily what it's going to be, but I'll look into my sketchbook and pick some element. At any give time I'm working on half a dozen pieces."



Cynthia's husband, Greg, helps her make the wax to the perfect color and consistency she likes. From these waxworks, molds are made which the different metals can be cast in. There are about 600 designs out there!

In addition to helping create the wax and casting the final product, Greg also hand-creates many of the carving tools...so cool!



What to do, what to make?

As we mentioned above, Cynthia likes to create pieces that will have a variety of uses. Her pieces are often beautiful to look at from all angles (you rarely find "plain" back side!) and functional from many different design standpoints. Take a peek at some of the projects we've made with Green Girl pieces as well as some of Cynthia's ideas for her creations...



Never
Stop
Growing

Little Hedgehog Bead



Grow Strong Bead



Two Goldfish
In A Pond
Component



The Zen of
Fishing



Design Team member
Danielle Wickes' Brick Stitch
Earrings, as seen in The
Bead Table.



Seek Charm

More Ideas...



Filigree Bird Component

A quick pair of earrings...just add a briolette to the bottom! Or, add to a leather bracelet, think a thick cuff!
Drea (with input from our FB Group!) used this piece with parts of the July 2019 Monthly Mix, stringing several strands of seed beads and Little Shadows on Soft Flex, crimping along both sides and finishing with a Cleo Clasp closure.



When creating this fan component, Cynthia imagined Nefertiti and pairing it with turquoise and carnelian...we love this idea!



Ancient Leaf Pendant



Dragonfly Pebble Bead



Both Alley Mori and Danielle Wickes used this dragonfly bead in pieces featured the Beadshop Design Team's Summer 2019 Look Book, Creative Journey.



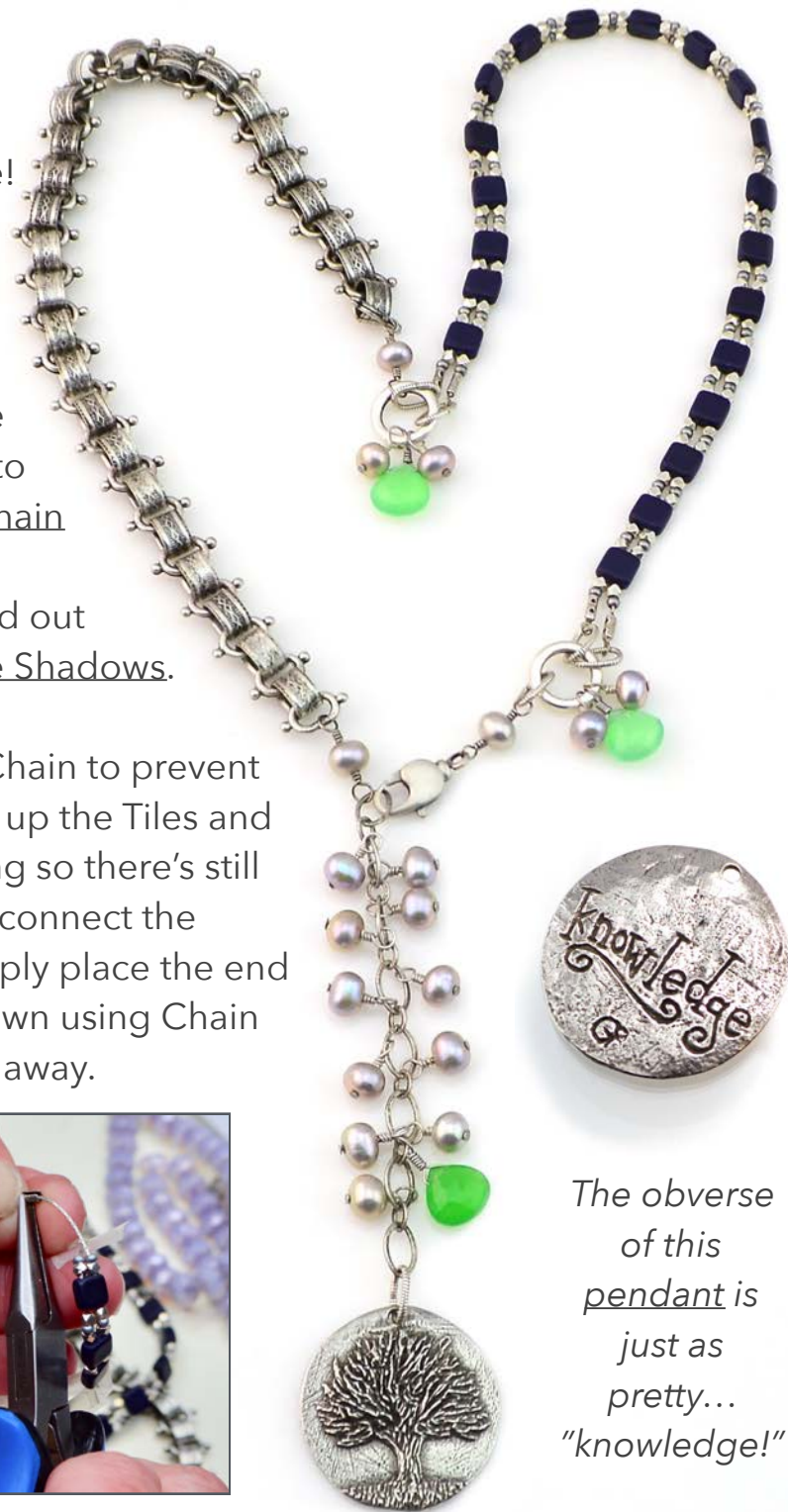
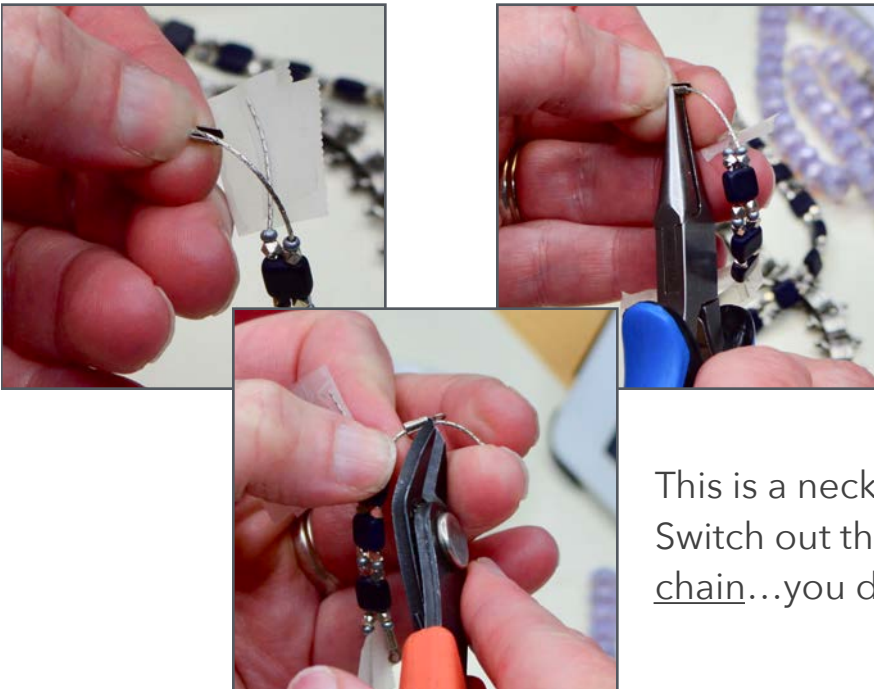
Minute Marker 40:00

Taking her inspiration from our Swivel Clasp, Kate created Chatelaine with Cynthia's visit in mind. It's so very Kate! Antique metals, wire work, chain, a pop of color...and a vintage vibe.

Minute Marker 1:00:00

Many of these techniques we've done time and time again, but we do want to focus on Kate's use of the Fine Line Chain to string beads on. That's where her CzechMates Tiles are, perfectly spaced out with 11/0 Metal Seed Beads and Little Shadows.

Kate tapes the ends of the Fine Line Chain to prevent her beads from falling off, and strings up the Tiles and spacers. Leave a bit of air as your string so there's still movement and flexibility. To end and connect the chain, she used Foldover Crimps. Simply place the end of the chain inside, fold both sides down using Chain Nose Pliers, then trim the tail of chain away.



*The obverse
of this
pendant is
just as
pretty...
"knowledge!"*

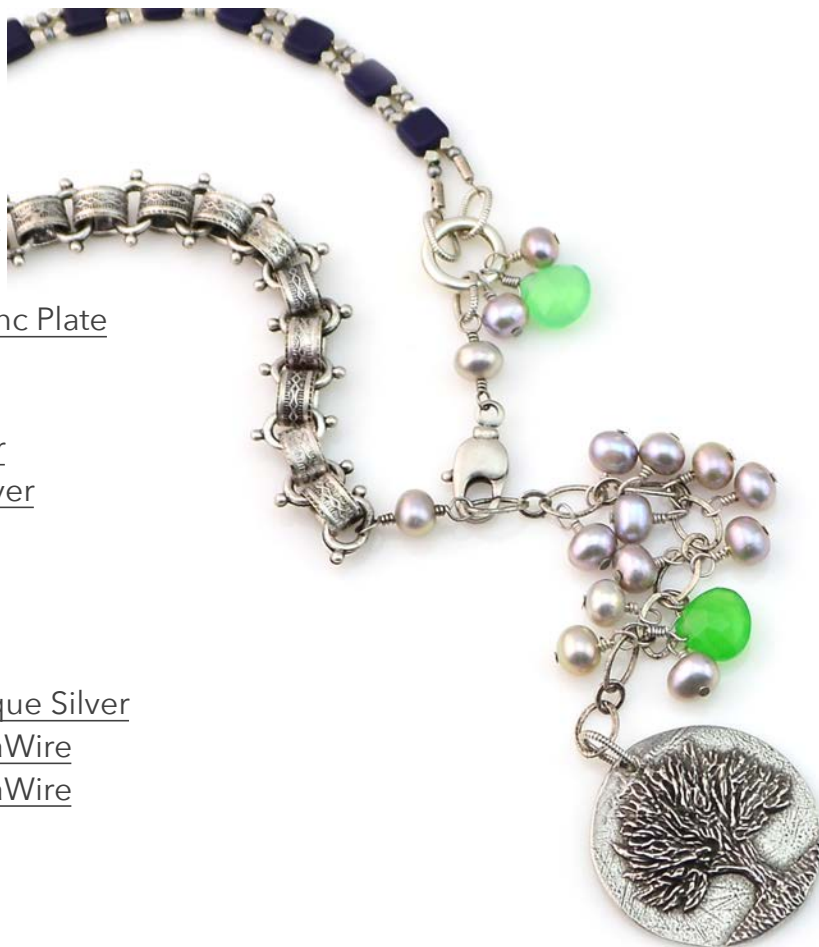
This is a necklace that is so easily customizable. Switch out the briolettes, change the pendant or chain...you do you! Watch to see some of Kate's

Links to This Project's Ingredients...

[Stones of Wisdom](#) and [Recipe](#)

Chatelaine

- 1 Swivel Clasp- [Antique Silver](#)
- 1 Strand [5mm Soft Grey Potato Pearls](#)
- 1 Strand [CzechMates Tiles- Matte Navy](#)
- 1 Strand [Little Shadows- Silver](#)
- 1 Tube [11/0 Metal Seed Bead Matte Zinc Plate](#)
- 3 [Chrysoprase Briolettes](#)
- 2 Ft [Fine Line Chain- Antique Silver](#)
- 1 Ft [Love of Lydia Chain- Antique Silver](#)
- 1 Ft [Smooth Sailing Chain- Antique Silver](#)
- 1 [Knowledge Tree Pendant](#)
- 2 [Mini Hoops- Antique Silver](#)
- 1 Pkg [Foldover Crimps- Antique Silver](#)
- 1 Pkg [1.5" Headpins- Antique Silver](#)
- 1 Pkg [9mm Oval Coil Jump Ring- Antique Silver](#)
- 1 Spool [24G Non-Tarnish Titanium ParaWire](#)
- 1 Spool [26G Non-Tarnish Titanium ParaWire](#)



Additional Learning:

- [How to Wire Wrap a Briolette](#)
- [How to Wire Wrap Using a Headpin](#)
- [How to Wire Wrap a Bead Unit](#)
- [How to Open and Close Jump Rings Securely](#)
- [How to Use A Foldover Crimp With Chain](#)

You will also want to have...

[Macrame Board](#) or [Project Tray](#), [Size 12 Beading Needles](#), [Beeswax](#), [GS Hypo Cement](#) or [Thread Burner](#), [Thread Snips](#), [Knotting Tweezer](#), [Chain Nose Pliers](#), [Bent Chain Nose Pliers](#), and [Flush Cutters](#)

In the Details

We end this episode checking out some of Cynthia's necklaces in detail. Using Emily's Bead Crochet technique, Cynthia loves to make and layer these necklaces...we adore them!



Creative Explosion:

The Beadshop LIVE Afterparty with Cynthia Thornton!

[Here's a link to this second video](#), and now we'll see screenshots from this episode and a few more pearls of design wisdom from these two creative souls.

Color Class:

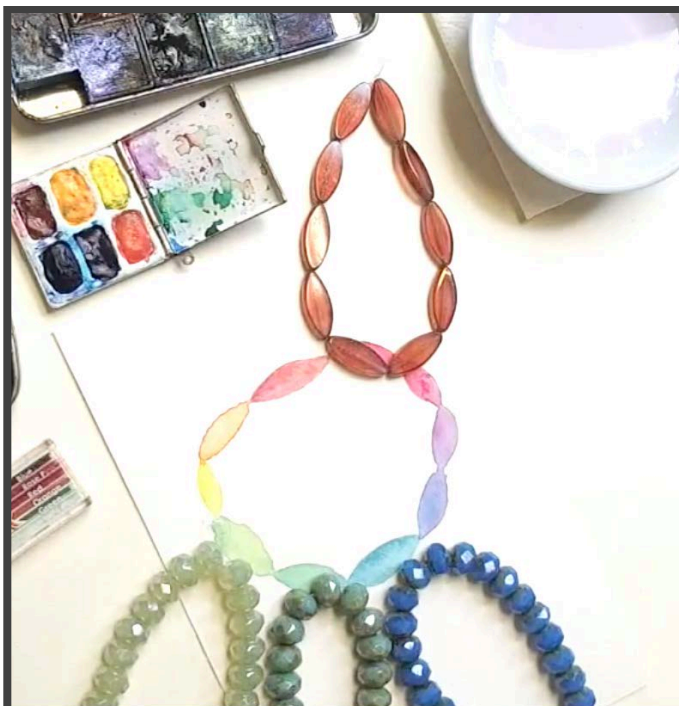
The Color Wheel shows us our basic colors. The three primary colors, Red, Blue, and Yellow, and the secondary colors that we discover upon mixing primaries: Orange, Purple, and Green.



Color Theory:

We often choose colors from the same side or opposite side of the color wheel.

"If you ever have any doubts, just take three colors next to each other on the color wheel."



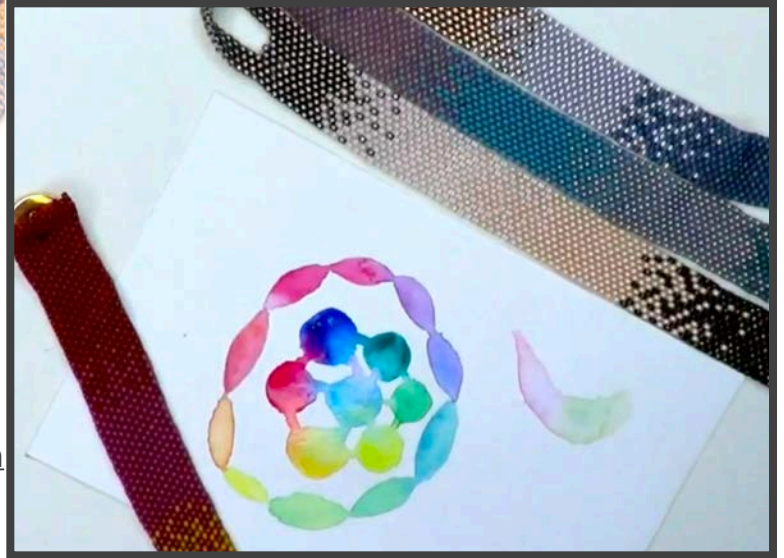
Nature does it best.

"If you ever have any doubt, go outside and look around. Look at the sunset, sunrise, you'll see complementary color schemes."

Ombre mixes of colors working together!



Peyote Stitch
Bracelets



Third Wheel.

Tertiary colors work, too. Here's a mix of purple, red, grey, and pale yellow...they mix and match beautifully...where an orange-purple won't always work together, adding extra colors helps!



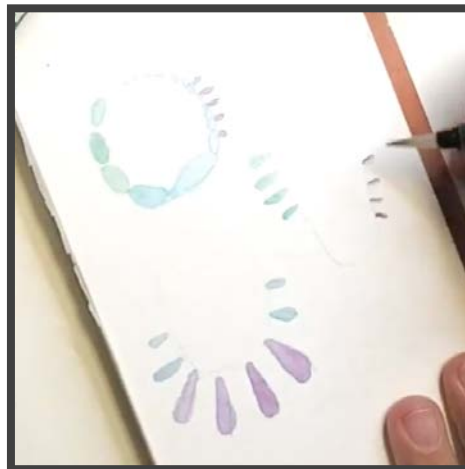
Painted Desert

Act naturally.

"That's why it's so successful, it has a natural flow that you'd see in nature."

Colors? Check. Next up? Shape.

Cynthia sketches out some shapes for ideas, then fills them in with her color palette.



Balance colors, shapes, and sizes as you design.

Creating with symmetry is easy. When you're creating an asymmetrical piece, be sure to balance your colors and sizes appropriately.

Color Blocking

A favorite piece Kate made long ago, this chunky tribal necklace is a mix of colors, shapes, and sizes. They work because she's grouped her colors into "blocks," large swaths of color rather than mixing it all up.



Hot and Cold

"Even the greens work here, because they're still warm."

Blue tones are considered cool, red tones considered warm. It can be helpful to keep your tones similar, too!



Exploring Janice's Flight of the Butterfly, an Odyssey Project. These individual strands have mixes of beads and colors, which are all cool blues, teals, purples... and just that little hint of that warm golden hue as an accent.



Link City!

Green Girl Collection on beadshop.com

Cynthia & Co.

Green Girl Studios
Cynthia's Etsy Shop
Cynthia's Instagram

Cynthia's Daughter, Azalea, on Instagram
Cynthia's Brother, Andrew, on Instagram
and his shop, Allegory Gallery

Cynthia's Paints and Colors:

Limn Paints
Daniel Smith Paints
Colored Lead for Mechanical Pencils
Water Brush Pens

Links to Us...

beadshop YouTube Channel
beadshop Facebook Page
beadshop Twitter Page
beadshop on Instagram
The Bead Table Blog
Newsletter Sign Up
FB Community-The Bead Table
info@beadshop.com
kate@beadshop.com
janice@beadshop.com
drea@beadshop.com

Links to Events and More...

- Beadshop LIVE Youtube Playlist
- Beadshop LIVE Archive Page
- Free Tip Friday YouTube Playlist
- FTF Archive Page
- Society6 Site (for Alfie mugs and more!)