

Beijing

A Curated Collection

By Janice Parsons

This project is the sister to Ming, a collection of freshwater pearls and lapis launched in January 2020 that was so popular Janice was inspired to do this new design and collection in June 2023.

"Unlike Ming, this new collection is done with macramé, not Soft Flex. This piece reminds me of my visit to Beijing many years ago...a city of opposites and similarities; traditions and innovations that feed off each other...a unique, thriving city." -Janice

Janice created two projects from this Curated Collection. The first she calls Simply Pearl, which can be worn with or without the Lapis Disc. The second is Beijing, which can be worn with the pearls and disc as a necklace or on its own as a wrap bracelet. It's up to you!



A Note on Curated Collections

beadshop.com creates Curated Collections on a very limited basis. They are not kits, but a collection of beads and components with which you can create anything you like! The projects we create are meant to inspire, and we hope you'll remake them or anything else your heart desires!

These Collections sell out quickly, so if you missed out you'll want to look for a variety of freshwater pearls, lapis, sunstone, rose quartz, and cloisonné, along with a 50mm Pi disc.

Additional Supplies

1 Spool of Micro C-Lon
Flexible Eye Needles- Medium
Zap Glue
Thread Snips or Flush Cutters
Deep Dish Design Tray with Insert
2 Pairs Clampers
Twine and Measuring Tape

Additional Learning

This is an Intermediate-Advanced project.
Skill Builder: [How to Macramé](#)
6.27.23 YouTube video

Simply Pearl Sample: 17" with loop



Beijing Pearl and Lapis Sample: 21-22" with loop



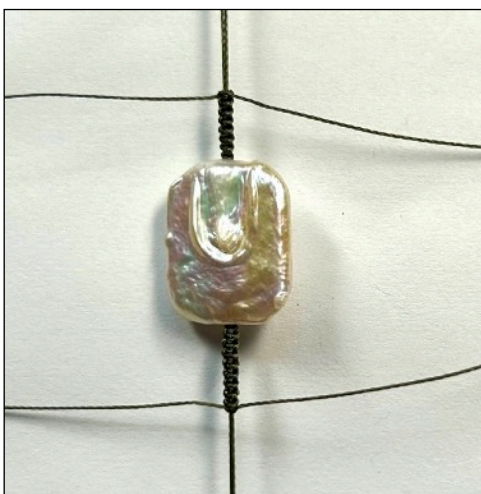
The inner hole diameter (IHD) opening of your Pi Disc is a deciding factor in your design. The IHD on this one is approximately 10mm. Many of the beads and pearls will fit through, but some will not.

When you design your necklace, it's best to keep the large beads (9mm+) away from the loop and the button by 1.5 to 2 inches. This will allow the loop side of your design to string through the inner hole and secure the button, which is too large to fit.

As always, size to fit you! Our sizes listed above are a guideline, but you want to make sure the piece fits *you*.

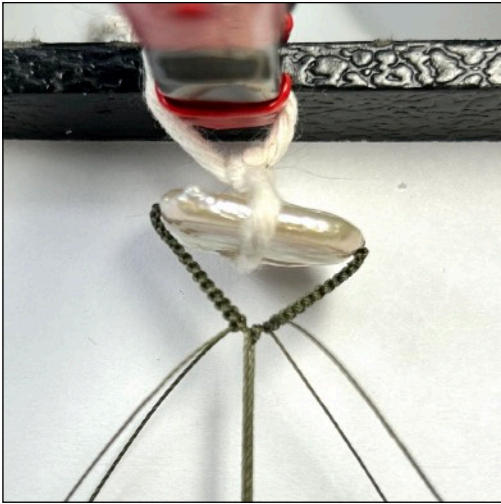
Where to begin:

1. Cut two lengths of Micro C-Lon at 4 yards each. Using one needle per strand of thread, bring your needle to the halfway mark on each cord. String your needle through a rectangle pearl with one needle going in one direction. Do the same with your other needle and thread going the opposite direction. Pick the nicest side of the rectangle pearl to face out. This is going to be your button.
2. Pull your needle ends 30 inches from the rectangle pearl on both strands.
3. Anchor your rectangle pearl to the design board with clampers holding down the needle ends in opposite directions.



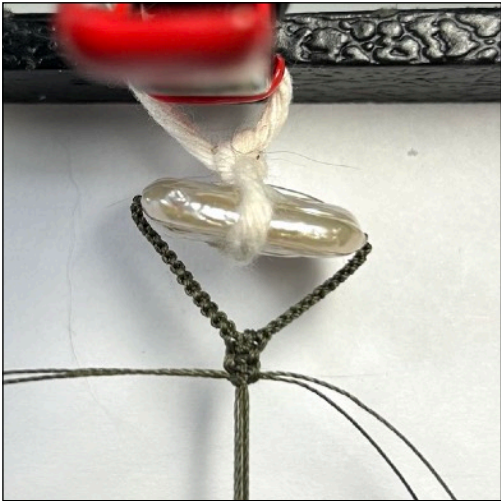
Using your tails on each side, macramé enough square knots on each side that the knots can meet in the middle under the rectangle pearl.

You will have to remove your project from the board to double check you have the correct length.

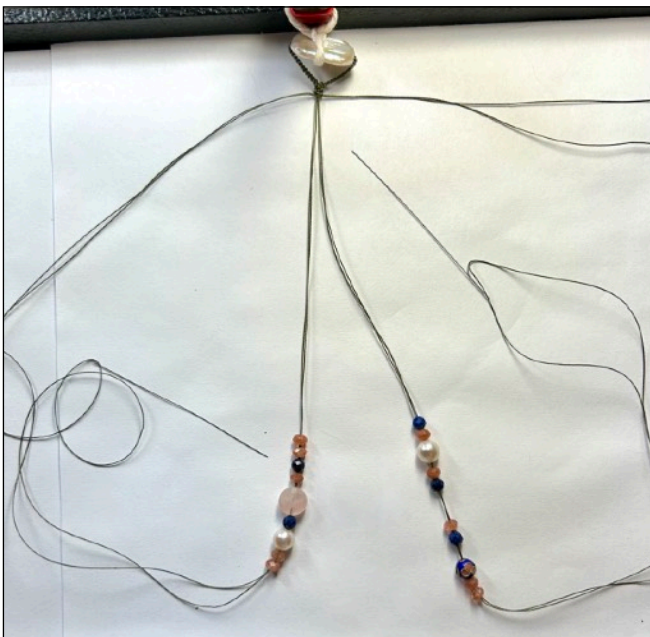


When your macramé stitches are long enough for the two ends to evenly meet in the middle, secure your rectangle button to the board using twine.

To bring your two sides together, grab the needle ends and tie them into a square knot. Then, secure both needle ends to the opposite side of the board using a clamer.



Using the loose tails (two on each side), tie two full square knots, which will bring everything together securely under your rectangle button.



Unclamp the needle ends from the board and begin to string on beads on both threads. Remember to keep your beads small for the first inch or two.

It's helpful to string both strands together. You will have knots between the beads, but it's nice to see what is side-by-side on each strand. Keep in mind that some of your special beads are limited, so factor that in as you string.



It's pretty much just fun now! Add sections of beads on both needle ends and knot away. There is no reason to keep the number of knots between each bead the same, unless you want to.

If you decide to wear your project both as a necklace and as a wrap bracelet, it's important to try it on as you go. Because of the large size of the rectangle pearls and cloisonné bead, you will probably need to add some length for a wrap bracelet.



Space out your "say something" beads so they won't clump all in one place when you wear as a necklace. As a wrap bracelet, they will overlay in places. That's okay!



Continue knotting until you are ready to macramé your button loop.

Taking the two needle ends together, secure them together by tying a square knot. Don't worry! You won't even see it!

Secure the needle ends back to the end of the board with your claspers.



Macramé your button loop using the all four of the loose cords over your two center cords.

Continue this until you have a loop long enough to fit the rectangle pearl through. Add 2-3 extra knots so you can macramé back over (after you glue) to form your loop.

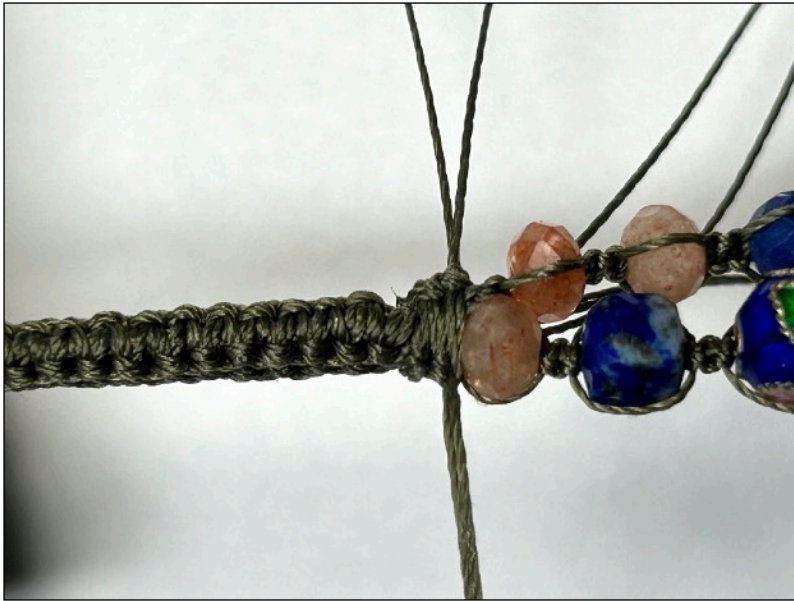


When your button loop is the correct length, loop it through a piece of twine, which is attached to your board.

Carefully add a drop or two of glue to the inside of the loop. Add the glue just above the extra knots. Be sure to put a plastic bag underneath while you glue, so you don't damage your design board!



Bring the two ends of the loop together, making sure the glued areas are in contact. Use a clamp to secure the top and bottom of the button loop together. Don't glue your fingers or the clammer!



Once the glue is set, you can macramé the ends over the first few stitches.

Carefully add glue to the last stitches both top and bottom. Allow to dry.

Using your flush cutters or thread snips, carefully cut away the excess threads.

There are so many options for designing with the Beijing Collection. The magic of beads is that they never spoil! Don't limit yourself to just one outcome. Take some time and look back at [Ming](#), review the designs of [Poetry](#), and visit our [Born Yesterday](#) collection of samples. There are other ways to add a disc to a macramé design!

If you haven't joined our community of worldwide beaders in our private Facebook group, [The Bead Table](#), this is *the place*! Please join us and post your creations. It's fun and you'll find answers to questions and if you want, make new friends!

This is a 2 strand bracelet made while photographing this handout to show how to make the button loop. It's another a very cute idea, in my opinion!

