

Beaded Bezel Necklace



Skill Level: Beginner-Intermediate

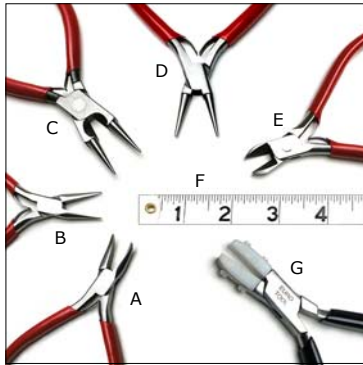
Project time: 3 hours

Learn how to showcase each of your gems by creating individual bezels out of tiny gold or silver beads. Once you begin to nestle your gems in their gold and silver frames, you will be searching for as many coin-shaped beads as you can find! You will also learn how to link each of these bezeled beads together to form a necklace with multiple chain drops.

BEADED BEZEL NECKLACE RECIPE

© Copyright 2010 Beadshop.com

Ingredients for One Necklace



TOOLS NEEDED

- A. Bent-nose chain pliers
- B. Needle-nose chain pliers
- C. Rosary pliers or
- D. Round-nose pliers
- E. Wire cutters
- F. Tape measure or ruler
- G. Wire straightener (optional)

STEP-BY-STEP INSTRUCTIONS INCLUDE

Part 1—Beaded Bezel Necklace
 Making the Bezeled Drops
 Building the Center of the Necklace
 Finishing the Necklace

Part 2—Technique Review Included
 How to Make Wire-Wrapped Loops



20 10mm Coin-shaped beads



400 2mm Gold-filled or sterling silver beads



20 10mm Gold-filled or sterling silver soldered rings



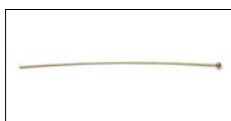
5'+ Gold-filled or sterling silver wire, 26 gauge



10" Gold-filled or sterling silver thin gauge chain



2" Thick gauge, gold-filled or sterling chain for extender

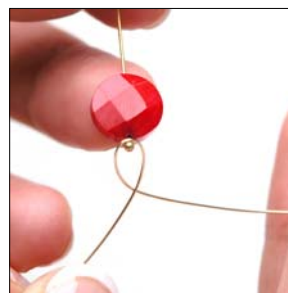
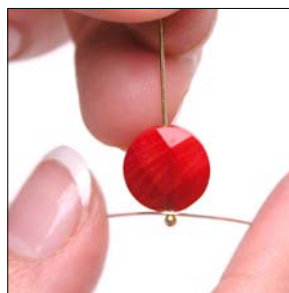
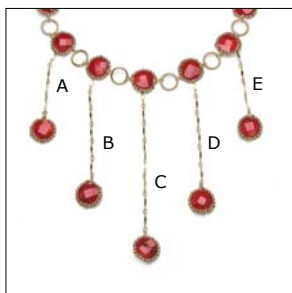


6 2" Gold-filled or sterling silver headpins



1 Gold-filled or sterling silver clasp

Making the Bezeled Drops



First we will create the 5 dangling bezeled drops that form the central focal point of your necklace.

Step 1

Cut 5 sections of your fine-gauge chain to the following lengths:

A, E = 1.5"
B, D = 2"
C = 2.5"

Step 2

Slide a coin shaped bead onto a 2" headpin.

Helpful Hint

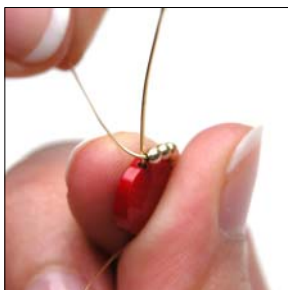
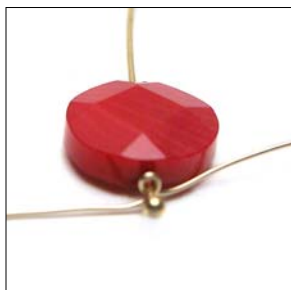
Headpins with a small ball shaped ends work best.

Step 3

Cut 6" of 26-gauge wire and bend it in half around the end of the headpin.

Step 4

Begin to wrap each end of the wire in opposite directions, securing the length of wire around the headpin.



Step 5

Use your needle-nose chain pliers to squeeze the loop and make sure the wire fits closely to the headpin. Each side of the wire should be pointing in opposite directions.

Step 6

Add 2mm beads to one side of the wire until you reach the point where the headpin exits the coin bead.

Step 7

- Keep the 2mm beads as close to the edge of the coin bead as possible.
- Using your hand, wrap the end of the now beaded wire around the headpin.

Step 8

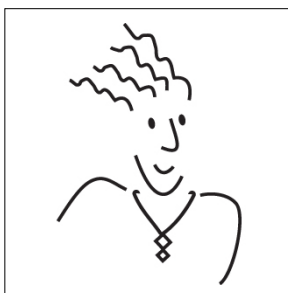
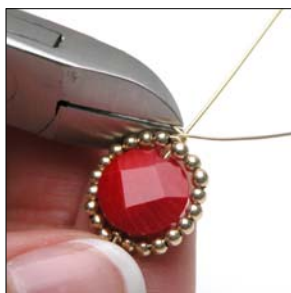
Wrap the wire around the headpin two full times to make it secure.

Step 9

Repeat steps 6-8 to bezel the other side of the coin bead.

Note

You'll want to use the same number of 2mm beads you used on the first side.



Step 10

- Trim the excess from both pieces of 26-gauge wire flush against the headpin with wire cutters.
- Use the bent-nose chain pliers to ensure that no sharp ends stick out.

Step 11

- Begin to make a wire-wrapped loop at the end of the headpin.
- Attach the loop to the end of the 2.5 section of fine gauge chain you cut in Step 1.

Review

Need a wire-wrapping review? Its included at the end as a separate step-by-step.

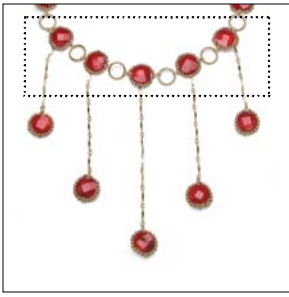
Step 12

Complete the wire-wrap after attaching the chain. You have finished the middle of 5 dangling drops for your necklace.

The Other Dangles

Repeat steps 2-12 to create the remaining 4 dangling drops.

Building the Center of the Necklace

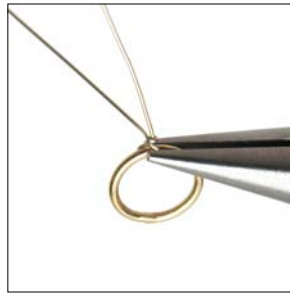


Now you will build the center section of the necklace. The dangling drops you created in the last section will be used in this section.



Step 13

- Cut 10 inches of 26-gauge wire.
- Begin to make a wire-wrapped loop, 2" from its end.
- Attach a soldered ring to the open wire-wrapped loop.



Step 14

Finish the wire-wrapped loop with the soldered ring inside.

Note

Do not cut the 26-gauge wire after your wire-wrap is finished.



Step 15

Add a coin shaped bead to the longer section of wire. The shorter section of wire you wrapped in the last step should be perpendicular to the longer section.



Step 16

Make a wire-wrapped loop at the other end of the bead.

Important

Attach a soldered ring to the wire-wrapped loop **before** completing the wrap.



Step 17

Add 2mm beads to one section of the 26-gauge wire. Use steps 6-9 as a reminder for this technique.



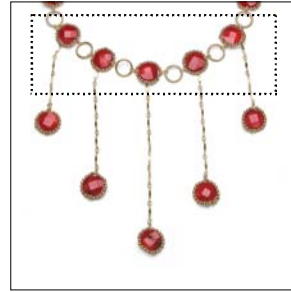
Step 18

- Add half of the number of 2mm beads needed to cover the second side of the coin bead.
- Next, add the 2.5" (longest) dangling drop.



Step 19

Add the remainder of 2mm beads needed to cover the second side of the coin bead. Be sure to wrap the end of the 26-gauge wire around the existing wire-wrap (↑) to hold it in place. Trim the excess wire.



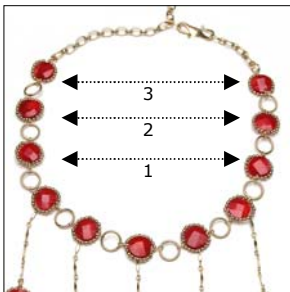
Step 20

Building outward from the soldered rings on both sides of the center, repeat steps 12-18 four more times to add your other dangling drops.

Finishing the Necklace



Once the center section of the necklace is built, you will continue to add a pattern of soldered rings and bezeled coin beads, this time **without** attaching chain drops.



Step 21

Work your way outward from the center section on each side, alternating sides as you go (in the order shown above). This will keep the dangling drops centered in your necklace.



Helpful Hint

Test the length of the necklace by holding it up to your neck and looking in the mirror. Stop adding soldered rings and coin beads a few inches **before** the necklace is the desired length.



Step 22

Using a wire-wrap, attach the final bezeled coin to a length of thicker gauge chain instead of a soldered ring. Attach the other end to a clasp. Lobster or hook clasps work best.



Congratulations!

Your beaded bezel necklace is complete. Use the techniques you learned here to add a new detailed touch to other jewelry you create.

LEARNING TO MAKE A WIRE-WRAPPED LOOP



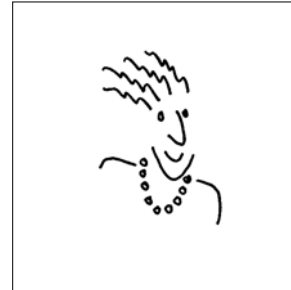
Example of a wire-wrapped loop with two beads and a spacer.

To practice this link, you will need:

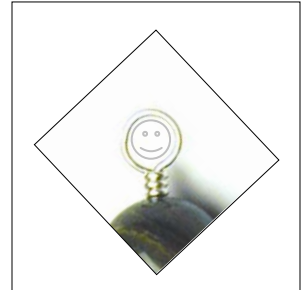
- Bent-nose chain pliers
- Needle-nose chain pliers
- Round-nose pliers or rosary pliers
- wire cutter

For supplies gather:

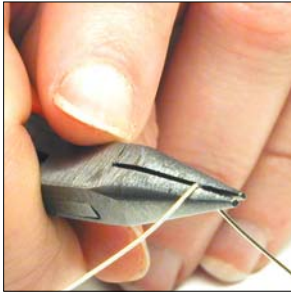
- 5" 24 gauge round wire
- 2 small spacer beads
- 4 8mm beads



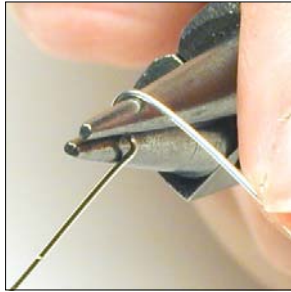
Imagine that the wire-wrapped loop is the head of a little person like me, and the wrap is the scarf.



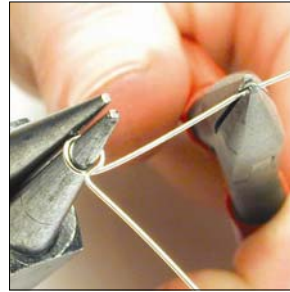
The head and scarf sit on the shoulders of the bead. The first thing you have to do is form my head!



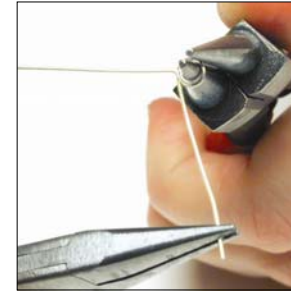
- Step 1**
- a) Holding the needle-nose chain pliers grab the wire about one inch from the end.
 - b) Using your finger, bend the short end of the wire at a right angle.
 - c) Switch to rosary pliers.



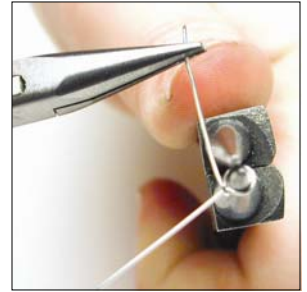
- Step 2**
- a) Place the tips of the rosary pliers above and below the short wire at the right angle.
 - b) Use your finger to begin pushing the short end of the wire over the top plier cone.



- Step 3**
- a) Switch the rosary pliers to your non-dominant hand.
 - b) Use the needle-nose chain pliers to complete the round loop.



- Step 4**
- a) Center the loop on top of the long wire.



- Step 5**
- a) Starting at the base of the loop, begin wrapping the short wire around the long wire.
 - b) Complete three full turns of the wire.



- Step 6**
- a) Using the wire cutters, clip off excess wire.
 - b) Using the bent-nose chain pliers, press down the end of the wire so it isn't sharp.



- Step 7**
- a) Slide beads onto the wire.



- Step 8**
- a) Use the tip of the needle-nose chain pliers to grab the wire against the bead.
 - b) Use your finger to push the wire into a right angle.
 - c) Switch to rosary pliers.
 - d) Repeat steps 2-4 to complete loop.



- Step 9**
- a) To link units together, slide one loop *into* the other.

Don't forget to link wire wraps together before completing the second wire-wrap.



- Step 10**
- a) Hold the loops steady with the needle-nose chain pliers.
 - b) Starting at the bottom of the loop, begin wrapping the short wire around the long wire.
 - c) Continue wrapping until you've reached the bead.