

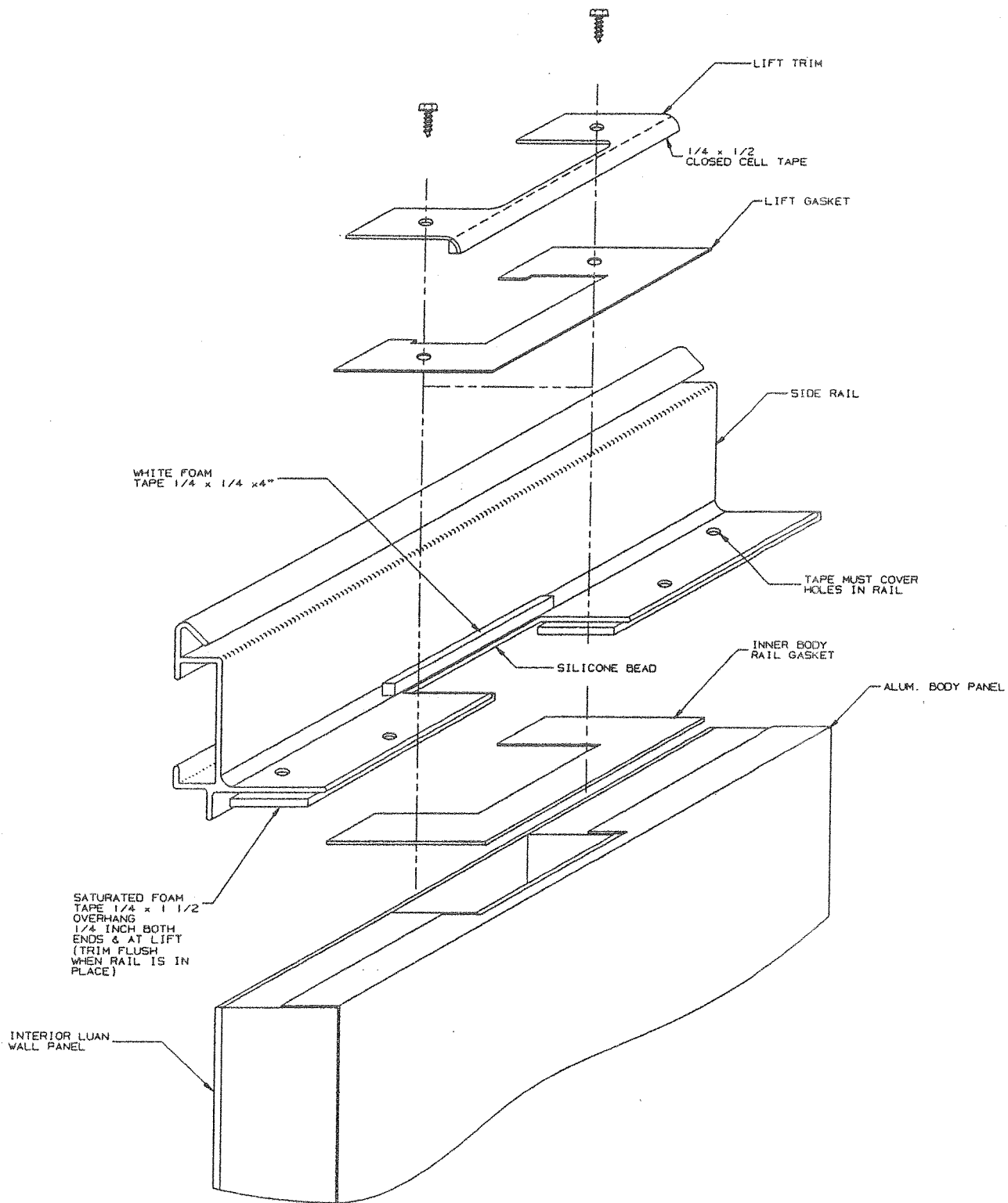
## SEALING OF DESTINY LIFTS AND RAILS

Install 1/4" x 1 1/2" saturated foam tape on underside of body rail. Tape to extend 1/4" beyond each end and 1/4" into lift opening cut-out. Tape to cover all .199 diameter screw holes.

Place gasket on top of wood wall at lift cut-out keeping centered over opening and attach with two staples.

Place 1/4" x 1/4" x 4" strip of white foam tape on body rail behind each lift cut-out in the radius as close to the bottom as possible. Place bead of silicone caulk on underside of lift cut-out area where body rail rests on wall panel. Note: Apply silicone caulking just prior to placement.

Apply super glue to underside of lift trim and place gasket on lift trim. The holes in the lift trim should align with the holes in the gasket. The super glue is used to hold the gasket in place when re-attaching. Place a strip of 1/4" x 1/2" tape (435-00-000-22) on top of the gasket on the underside of the lift trim at the radius area.



## SEALING OF DESTINY LIFTS & BODY RAILS