

**FLEETWOOD FOLDING TRAILERS, INC.**  
**INSTALLATION INSTRUCTIONS**

**1968N503**  
**Revised May 2006**

**PART NUMBER: 4755D8581**

**Mini-Mach/Super-Mach Air Conditioner Installation Kit for 2000 – Present Destiny (except Tucson, Taos, & Yuma), Destiny DLX, Destiny SE, 2004 – Present Highlander Series, 2005 – Present Americana & Grand Tour Series, Scorpion (except S-3), 2006 – Present Evolution Series (Except E1)**

**IMPORTANT NOTICE**

These instructions are intended for the use of qualified individuals specially trained and experienced in installation of this type equipment and related system components. Installation and service personnel are required by some states to be licensed. Persons not qualified should not attempt to install this equipment nor interpret these instructions. Improper installation may cause damage to the equipment and may cause a hazard.

These instructions are for the installation of the air conditioner kit and the air conditioner unit itself. Refer to the instructions included with each air conditioner model for additional mounting details.

**This package contains:**

1	-	4741B965	Expansion rivet	3	-	4739-415	Nylon clamp
3	-	4745-396	Screw (painted)	1	-	4752-244	Caution decal
1	-	1212-013	Grommet	1	-	1202B269	Flat Washer
1	-	4748A659	Cord	4	-	4749A212	Channel extension (Aluminum tops) ¾"
1	-	4723-337	Velcro strap				
2	-	1107B1012	¾" Screw	1	-	4303100020	#24221 Loctite
4	-	4767-084	Channel extension (Filon tops) 1"				

**A. INSTRUCTIONS (AIR CONDITIONER KIT)**

1. Route the power cord through the pre-drilled roof brace after loosening the roof brace from the mounting bracket on the side closest to the 20 amp electrical outlet. Allow 18" to 24" of the power cord (non-plug end) to remain at the air conditioner cut-out location for later attachment to the ceiling assembly.

**On 2007 – current Highlander Series units, the power cord will run through the slot formed in the roof brace. This slot will be covered by a nylon cover that will need to be removed and reinstalled after power cord is placed in the slot.**

**IMPORTANT:** A 20 amp receptacle is located within the interior wall paneling at the front, rear, or sides of the trailer and can be identified by the short horizontal notch in one leg of the outlet.

2. Remove four accordion rivets from within the ceiling paneling of the top assembly. Carefully mark the air conditioner cut-out opening on the top interior. For ease of cutting, it recommended that a  $\frac{1}{2}$ " –  $\frac{3}{4}$ " circular hole be drilled through each corner of the disposable section of the cut-out. This will allow ample room for the saber saw blade to miter each corner.

**WARNING:** Always check location of the pre-determined accordion rivets prior to cutting to ensure the correct 14" x 14" opening size, as well as proper clearance from the air conditioner top braces for installation of the air conditioner unit.

**NOTE:** The cut-out must be 11" from the screen door track for proper air conditioner alignment.

3. Cut out the opening for the air conditioner with the use of a saber saw or other suitable cutting tool.

**IMPORTANT:** Due to the various types of commercial air conditioners available, check each individual manufacturer's recommendations for the exact air conditioner cut-out size to measure.

4. Place the four channel extensions into the air conditioner hole cut-out, one in each side between the interior ceiling paneling and the exterior metal skin of the top assembly. Align the edges of the channel extensions with the hole cut-out.

**NOTE:**  $\frac{3}{4}$ " for aluminum tops (4749A212) – 1" for filon tops (4767-084)

**IMPORTANT:** Insert the channel extensions between the ceiling panel and the outer skin. Do NOT remove the foam from the top core.

**NOTE:** For 2005 to 2006 Highlander Series, there is a 2" wide wood strip below the center seam. You will need to cut 2" off the end of the front and rear channel extensions. Dispose of the 2 pieces. The remaining front and rear channel extensions will need to be cut in half. You will then place a piece on both sides of the wood strip.

5. Once the air conditioner hole is completely cut, lower the top assembly to enable easy access to the exterior portion.
6. If installing on an aluminum top, cut the exterior metal center seam strip 2" back on each side of the opening. This will allow the air conditioner unit to properly seal against the exterior portion of the top assembly. See Figure 1. If installing on a filon top, proceed to Step 10.

**CAUTION:** Failure to cut the center seam strip back 2" on each side may create a water leak on one or both sides of the A/C unit.

7. Cut away any double-stick tape that remains between the end of the center seam strip and the edge of the cut-out opening. Measure  $\frac{3}{8}$ " back from the edges of the center seam strip you cut in Step 6. Drill a  $\frac{3}{16}$ " hole in the bottom of the center seam strip at these locations. Secure the center seam strip edges with the screws provided in this kit. See Figure 1.
8. Place a bead of caulking along the cut edge of the center seam strip. See Figure 1.

9. Re-seal the exposed 2" section of the center seam with caulking. See Figure 1.

10. You are now ready to begin the actual air conditioner installation.

## **B. INSTRUCTIONS (ROOF AIR CONDITIONER UNIT)**

1. Remove the carton and packaging from the roof air conditioning unit.
2. Lift the air conditioning unit off its wooden skid and set directly on the prepared roof opening cut-out with the pointed end of the unit facing the front of the trailer and the condensing coil facing the rear. The air conditioning unit may be lifted by its plastic cover. See Figure 2.

**NOTE:** The centering flange on the underside of the air conditioning unit must be centered over the roof opening cut-out.

**IMPORTANT:** Different brands of roof air conditioners and ceiling assemblies are not interchangeable. Check individual manufacturer's recommendations.

3. Using any brand of clear silicone caulking, apply a consistent bead of caulking around the inside perimeter of the A/C gasket and roof from inside the trailer up through the 14" x 14" cut-out. See Figure 1.

## **C. INSTALLING THE AIR CONDITIONER INTERIOR CEILING ASSEMBLY**

1. Place the "CAUTION" decal on the ceiling assembly.

Specific instructions for this part of the air conditioner installation can be found in your installation booklet. Follow these as indicated for proper installation.

**NOTE:** Apply Loctite (4303100020) to each of the four A/C anchor bolts.

**CAUTION:** When tightening the air conditioner anchor bolts, do not exceed 50% of gasket compression or irreversible cell damage to the gasket material will occur. Periodically check tightness of all anchor bolts. (On 8000 series Coleman air conditioners, it will be necessary to remove the ceiling assembly to access the anchor bolts.)

## **D. WIRING PROCEDURE**

### **DANGER - SHOCK HAZARD**

**MAKE SURE THAT THE POWER SUPPLY TO THE UNIT IS DISCONNECTED BEFORE PERFORMING ANY WORK ON THE UNIT TO AVOID THE POSSIBILITY OF SHOCK, INJURY, OR DAMAGE TO THE EQUIPMENT.**

1. A wiring access hole through the interior plastic ceiling assembly cover of the air conditioner should be located 1" down from the top and 2 ½" in from the curbside on the front of the ceiling assembly cover. This hole is located directly adjacent to the pre-drilled hole in the front ceiling

brace. See individual manufacturers recommended hole locations included with the ceiling assembly instructions.

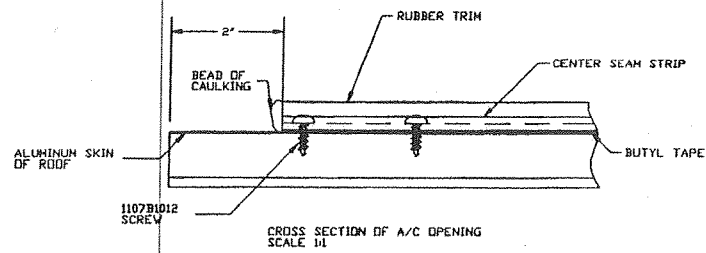
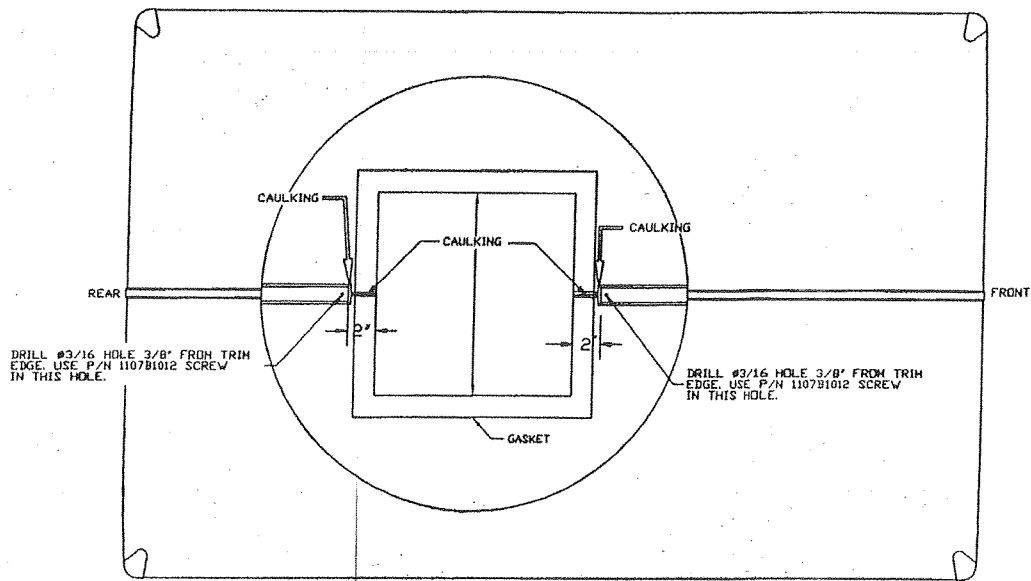
**On 2007 – current Highlander Series units, the power cord will run through the slot formed in the roof brace. This slot will be covered by a nylon cover that will need to be removed and reinstalled after power cord is placed in the slot.**

**NOTE:** The electrical control box is located on the curbside of the ceiling assembly cover.

2. Insert wire through enclosed white rubber grommet and the interior plastic ceiling assembly cover.
3. Splice wires color for color with the enclosed wire nuts. Reference air conditioner manual.
4. Using electrician's tape, tape the wire nuts securely to the wires.
5. Tighten the strain-relief clamp to secure the 115 volt supply wire in place (see air conditioner booklet). Coil the two connected wire ends and place inside the control box. Reinstall the control box cover. Be sure the thermostat probe is in position, routed through the rubber grommet and not touching any metal. See air conditioner manual.
6. Make sure the filters are in position in the ceiling assembly cover and are held in place by elastic cords around four retainer pins; if they are not, install them at this time. See air conditioner manual.
7. Reinstall the interior ceiling assembly and secure with the two screws taken out earlier. Put the control knobs back on the ceiling assembly and turn the selector switch to "OFF."
8. Route the power cord along the top of the roadside or curbside aluminum canvas track toward the 20 amp receptacle, then fasten the cord to the top with the three nylon clamps and three screws provided.
9. Route the power cord along the seat bench frame or curbside cabinet assembly and into the 110 volt, 20 amp receptacle.
10. Drill a 13/64" hole in the corner of the top assembly (through ceiling panel only) coinciding with the routing of the power cord. Fasten the power cord retaining Velcro strap with the expanda-rivet and flat washer provided.

**NOTE:** Store power cord looped at corner of top assembly prior to closing.

FIGURE 1  
ALUMINUM SKIN STYLE



FILON SKIN STYLE

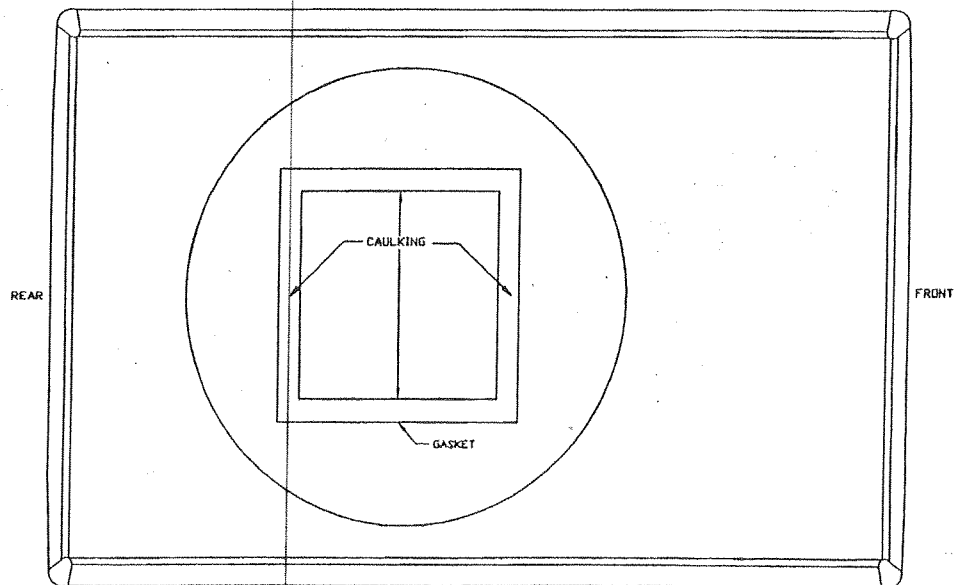
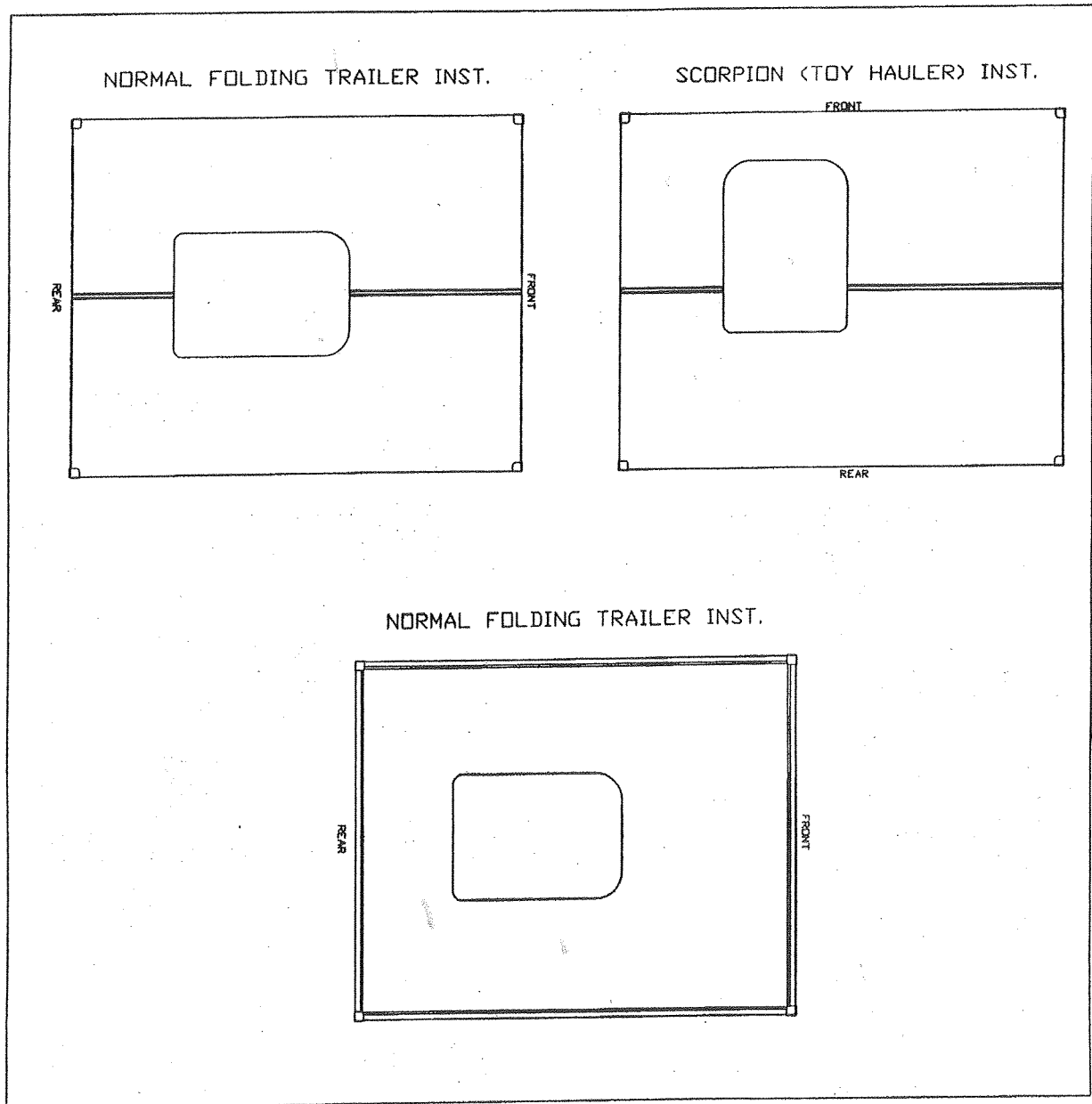


FIGURE #2



1968L503