

## ***CENTURION 3000 CONVERTER***

---

### **Model CS 1200**

Input: 120 volts, 60 hertz, 4 amps

Output: 12 volts, 12 amps

Dimensions (H, W, D): 5.625", 10.08", 3.38"

Faceplate: 7" x 11.83" Cut-out: 6.25" x 10.58"

Weight: 4.5 pounds

Without Breakers

CSA + CSA NRTL/C

### **Model CS 2000**

Input: 120 volts, 60 hertz, 8 amps

Output: 12 volts, 20 amps

Dimensions (H, W, D): 5.625", 10.08", 3.38"

Faceplate: 7" x 11.83" Cut-out: 6.25" x 10.58"

Weight: 5 pounds

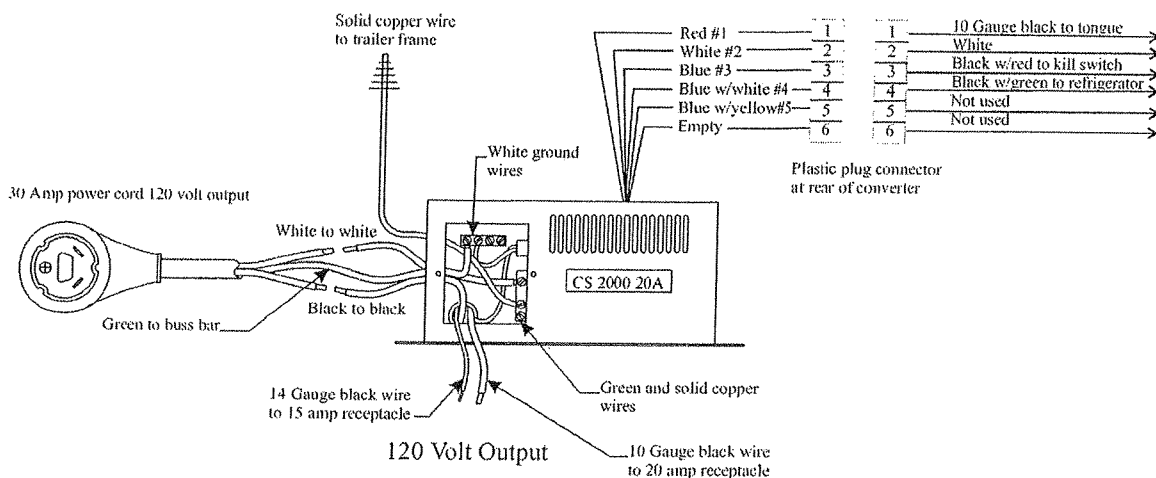
Without Breakers

CSA + CSA NRTL/C

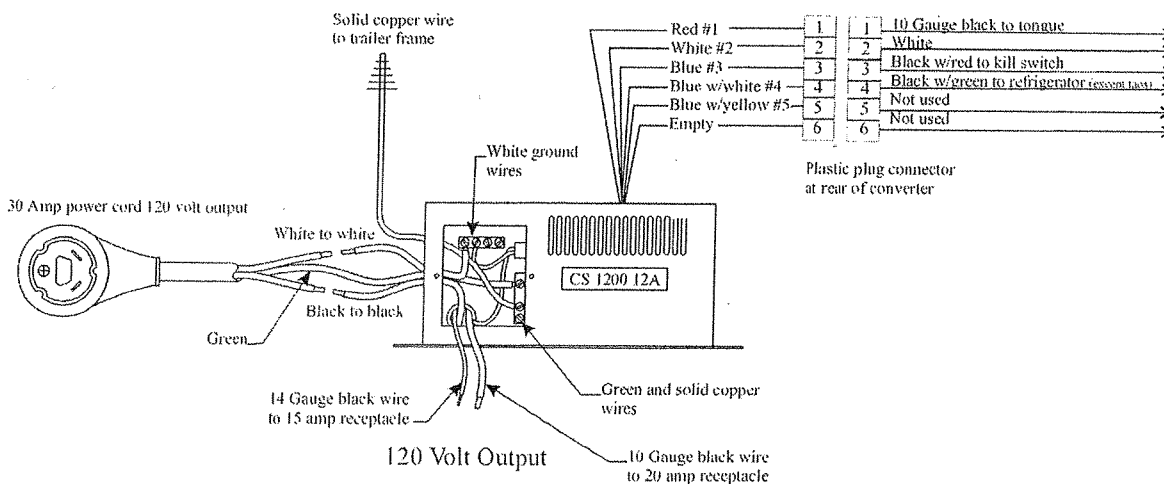
# CENTURION 3000 CONVERTER

Page 2

## Centurion 3000 Series CS 2000 20 Amp Converter (ELECTRONIC)

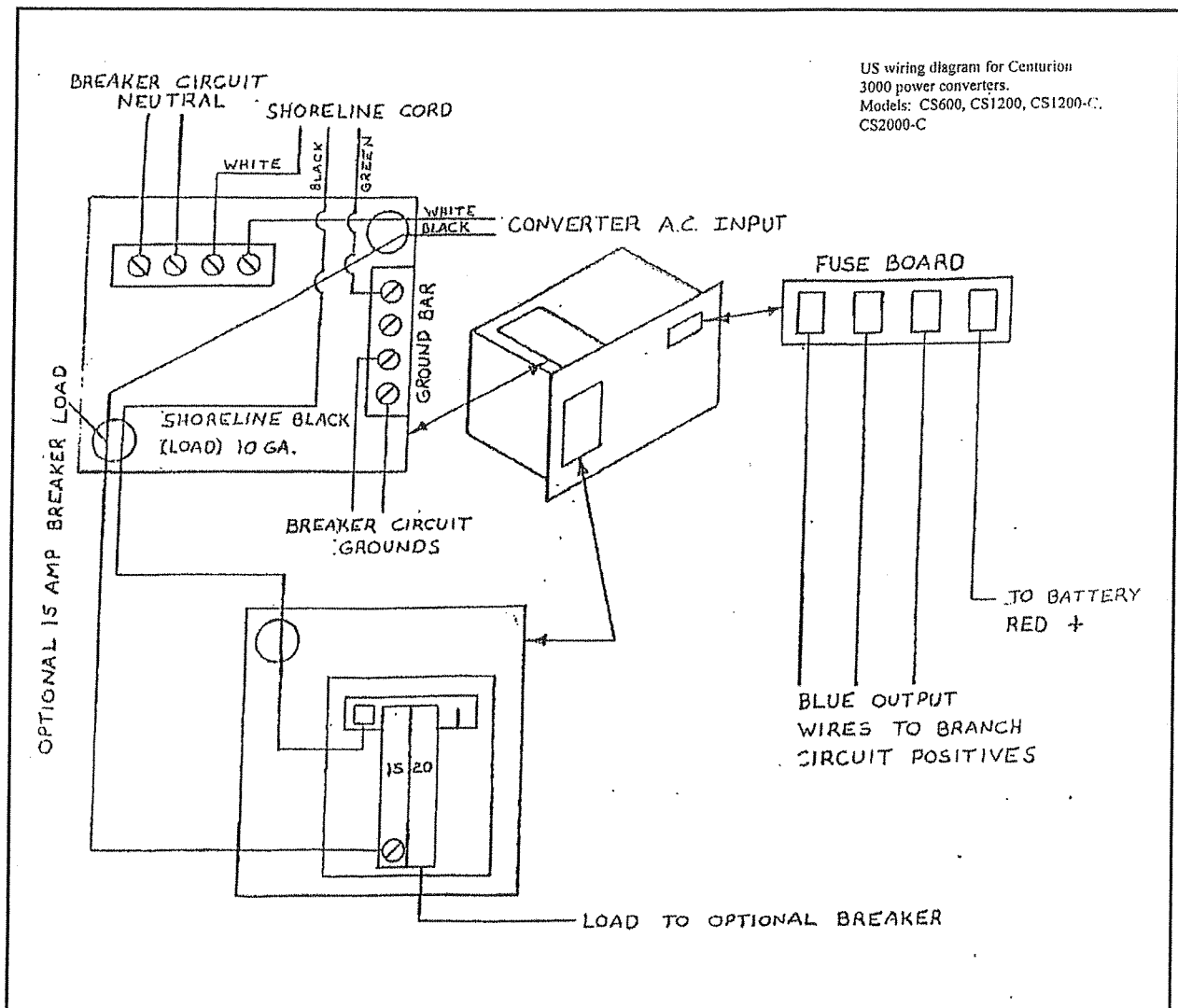


## Centurion 3000 Series CS 1200 12 Amp Converter (ELECTRONIC)



# CENTURION 3000 CONVERTER

Page 3



# CENTURION 3000 CONVERTER

Page 4

