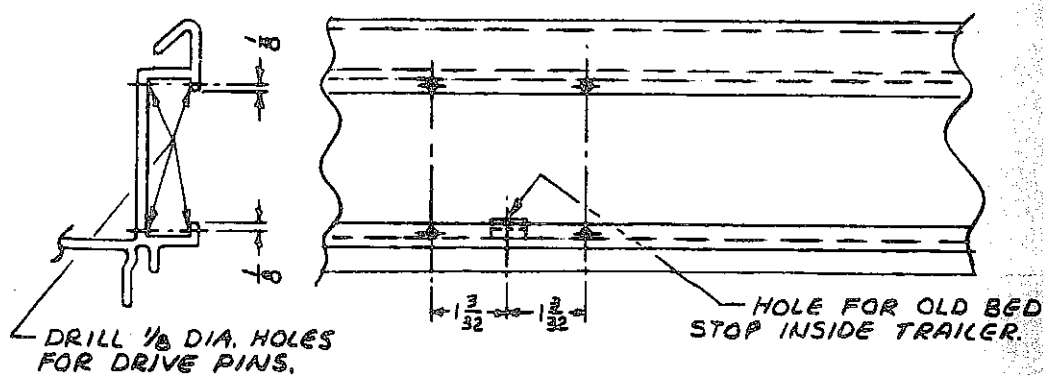
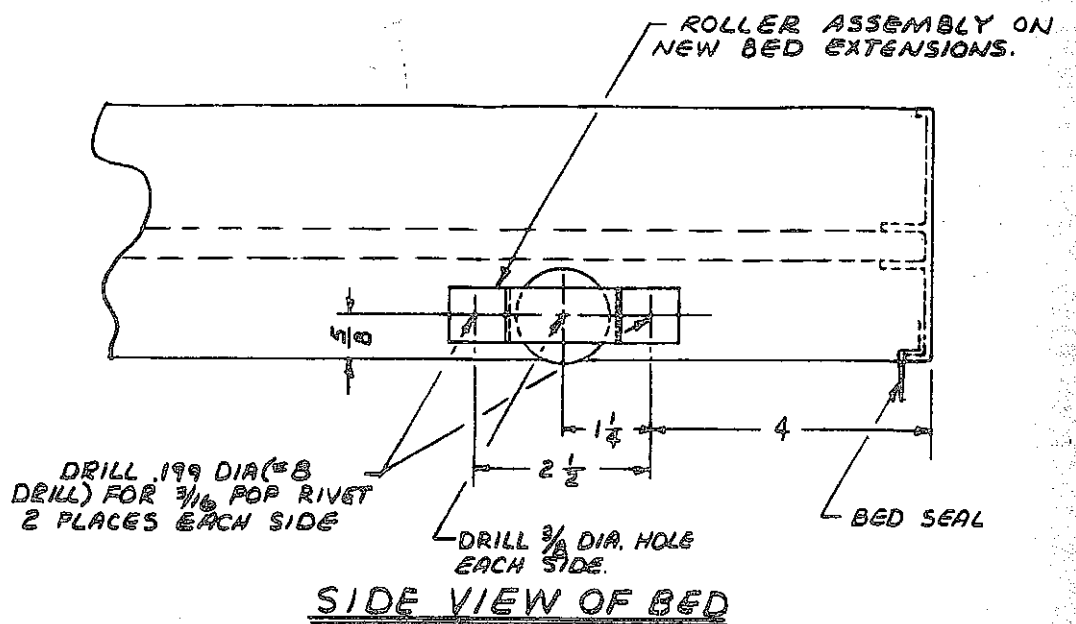




# INSTALLATION INSTRUCTIONS

When it is necessary to replace the Bed Extension No. 4720B5601 on the CT-280 Trailer, it will be necessary to move the Roller Assembly as indicated on the drawing. If the Rivets cannot be replaced, Nuts and Screws can be used. Use #10 x 1/2" Screw and a Lock Nut with the Head of the Screw in front of the Roller Assembly.

The Center Bed Stop must be replaced by Roll Pins and placed as indicated on the drawing.



THE COLEMAN COMPANY, INC.  
CAMPING TRAILER DIVISION  
Somerset, Pennsylvania 15501