

**FLEETWOOD FOLDING TRAILERS, INC.
INSTALLATION INSTRUCTIONS**

1968B493
September 1998

MODEL NUMBER: 4757A5831 ROOF BRACE KIT

For use with: 1996 and newer models with ABS top assemblies.

This kit contains:	1	-	4757-584	Brace assembly
	2	-	4754-925	U-shaped mounting bracket
	2	-	4754B926	Exterior mounting plate
	4	-	1200E218	1/4" x 20 x 2 1/4" SS carriage bolt
	2	-	1200E224	1/4" x 20 x 6" carriage bolt
	4	-	1201B637	1/4" x 20 lock nut
	2	-	4738-047	1/4" x 20 nut
	4	-	1202E040	5/8" O.D. flat washer
	3	-	4741A910	3/4" tek screw
	3	-	4739-415	Plastic cable clamp
	1	-	4350000059	Sealant tape
	4	-	4755-423	Plastic screw caps
	1	-	4756A275	ABS glue kit for top covers
	2	-	4757-093	A/C top plate cover (plastic)

1. Orient the U-shaped mounting bracket on the inside of the roof as shown in figure 1 using the following procedure:
 - A. Begin on the roadside interior of the top assembly.
 - B. For all models except the Sun Ridge and Bayside, place a straight edge against the rear edge of the rear screen door track and draw a light pencil mark from the screen door track outward to the radius on the inside of the top. For Sun Ridge and Bayside models, place a straight edge along the front edge of the front screen door track and draw a light pencil mark from the screen door track to the radius on the inside of the top.
 - C. Place the U-shaped mounting bracket against the pencil line (in front of the pencil line on Sun Ridge and Bayside, behind the pencil line on all other models) at the very edge of the radius on the interior of the roof as shown in figure 1. The bracket should rest flat on the interior roof surface.
 - D. Using the bracket as a template, mark the hole location closest to the pencil line on the interior of the roof, then lay the bracket aside.
2. Drill a 17/64" mounting hole straight up through the roof at the location marked in the previous step.

3. This step must be performed from outside the trailer. Place the exterior mounting plate over the hole drilled in step 2 and insert a carriage bolt through the exterior mounting plate and into the top assembly. Visually align the exterior mounting plate parallel to the rain gutter on the roof. **Be certain** the exterior mounting plate is positioned so that the next hole drilled will match the location of the interior U-shaped mounting bracket (in other words, **do not** rotate the exterior mounting bracket 180°, which would cause the interior bracket to straddle the screen door track).
4. Using the exterior mounting plate as a template, mark the location of the second hole on the exterior of the top and remove the mounting plate and carriage bolt.
5. Drill a 17/64" mounting hole **straight** down through the roof at the location marked in the previous step.
6. Temporarily reposition the mounting plate on the exterior of the roof and insert the two carriage bolts.
7. For Sun Ridge and Bayside models, see figure 2. For all other models, see figure 3. Measure distance from end of canopy track indentation to edge of exterior mounting plate. This will be dimension "X". Remember this dimension.
8. For Sun Ridge and Bayside models, see figure 4. For all other models, see figure 5. Use dimension "X" from the previous step to locate curbside exterior mounting plate. Place exterior mounting plate parallel to the rain gutter, maintaining the same spacing between the exterior mounting plate and rain gutter as on the opposite side of the roof.
9. Using the exterior mounting plate as a template, mark the two mounting hole locations on the exterior of the roof.
10. Remove the mounting plate and drill two 17/64" mounting holes **straight** down through the top assembly.
11. Place sealant tape on bottom of curbside exterior mounting plate and position on roof with 2 1/4" carriage bolts extending down through the top. Have another person inside the trailer. Attach the U-shaped mounting bracket and air conditioner brace to the carriage bolts using two of the washers and lock nuts supplied. Thread the nuts onto the carriage bolts so that only one course of the carriage bolt thread is visible below the nut. **DO NOT TIGHTEN.** See Figure 1.
12. See Figure 2. Place sealant tape on bottom of roadside exterior mounting plate and position on roof with 6" carriage bolts extending down through the top. Attach the U-shaped mounting bracket and air conditioner brace to the 6" carriage bolts using the two nuts (not lock nuts) and washers supplied. (The washers are provided to prevent the bracket from being scratched by the nuts.)

13. Tighten the nuts on the bottom of the 6" carriage bolts to draw the brace up to the roof. Remove one of the 6" carriage bolts and install a 2 1/4" carriage bolt, washer, and lock nut. Tighten securely. (Caution: Do not over-tighten bolts. Bolts should be tightened only until the top plate begins to squeeze sealant out evenly on all four sides.) Remove the other 6" carriage bolt and install a 2 1/4" carriage bolt, washer, and lock nut.
14. Return to curbside mounting bracket and securely tighten both carriage bolts. Do not over-tighten. See "Caution" in step 13. Place plastic screw caps on thread ends of all four carriage bolts.
15. Trim excess sealant from around both top plates. Be careful not to cut or scratch the top assembly when trimming sealant.

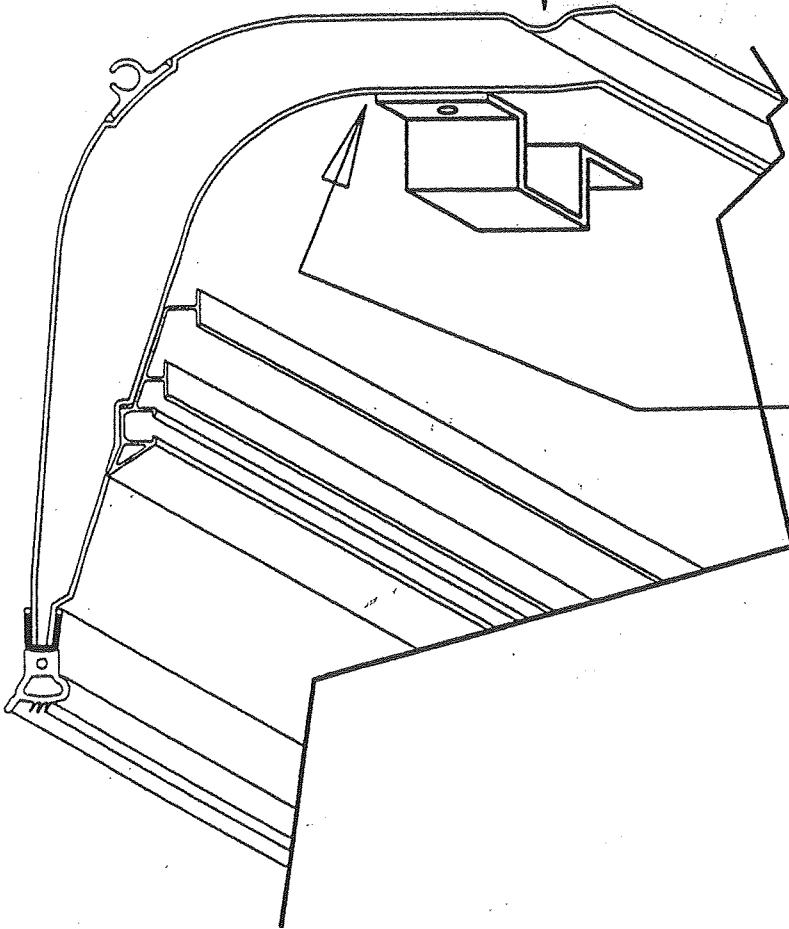
NOTE: The air conditioner brace is not permanently fastened to the roof so that it may "float" back and forth within the U-shaped mounting brackets as the roof expands and contracts.

16. If installing this kit in a unit with an air conditioner, use the three enclosed plastic cable clamps and tek screws to attach the power cord to the side of the air conditioner brace closest to the air conditioner.

FIGURE 1

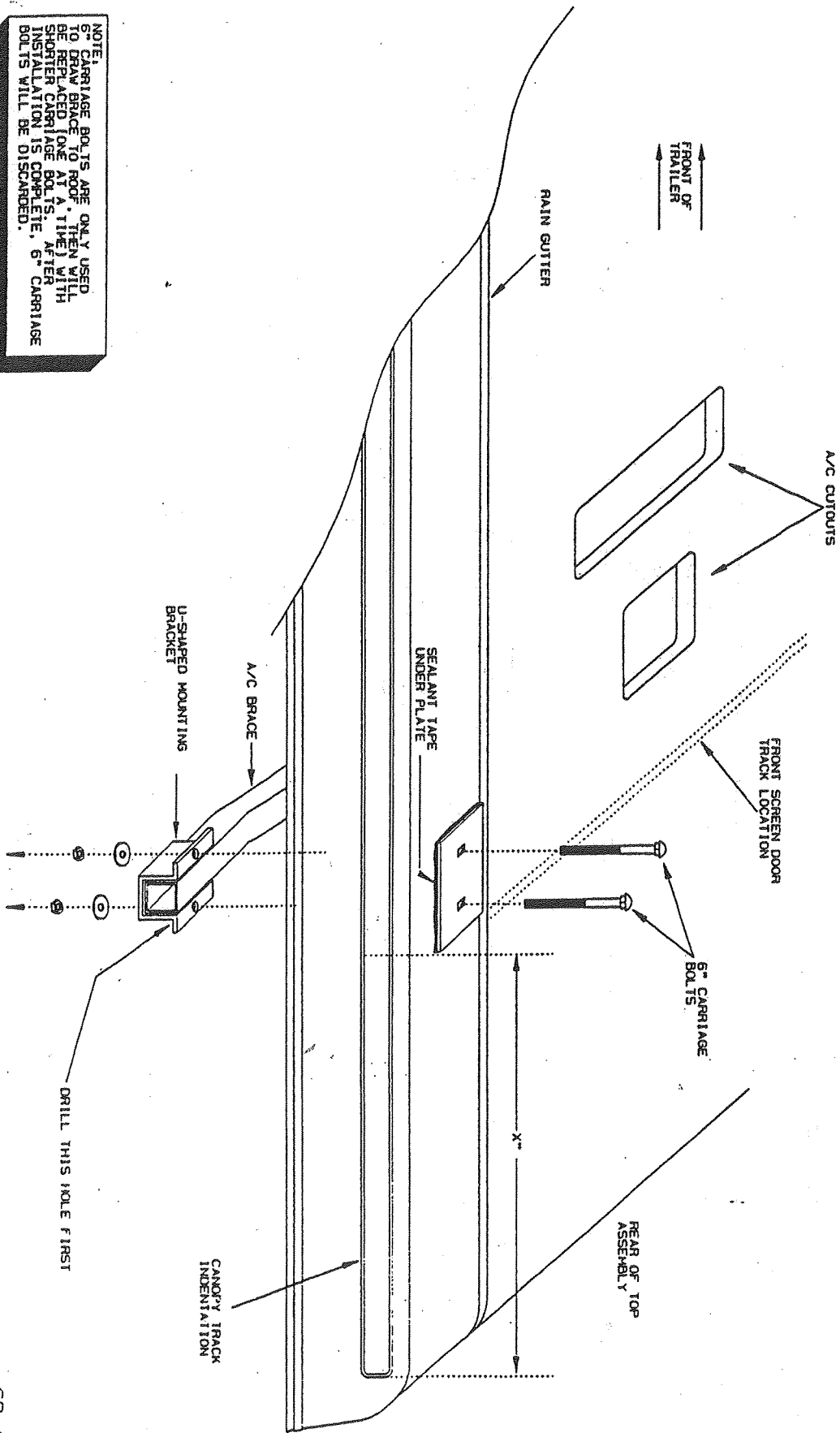
RAIN GUTTER
(EXTERIOR OF ROOF)

EDGE OF BRACKET MUST
BE FLUSH WITH EDGE OF
INTERIOR TOP SKIN RADIUS



68-493E

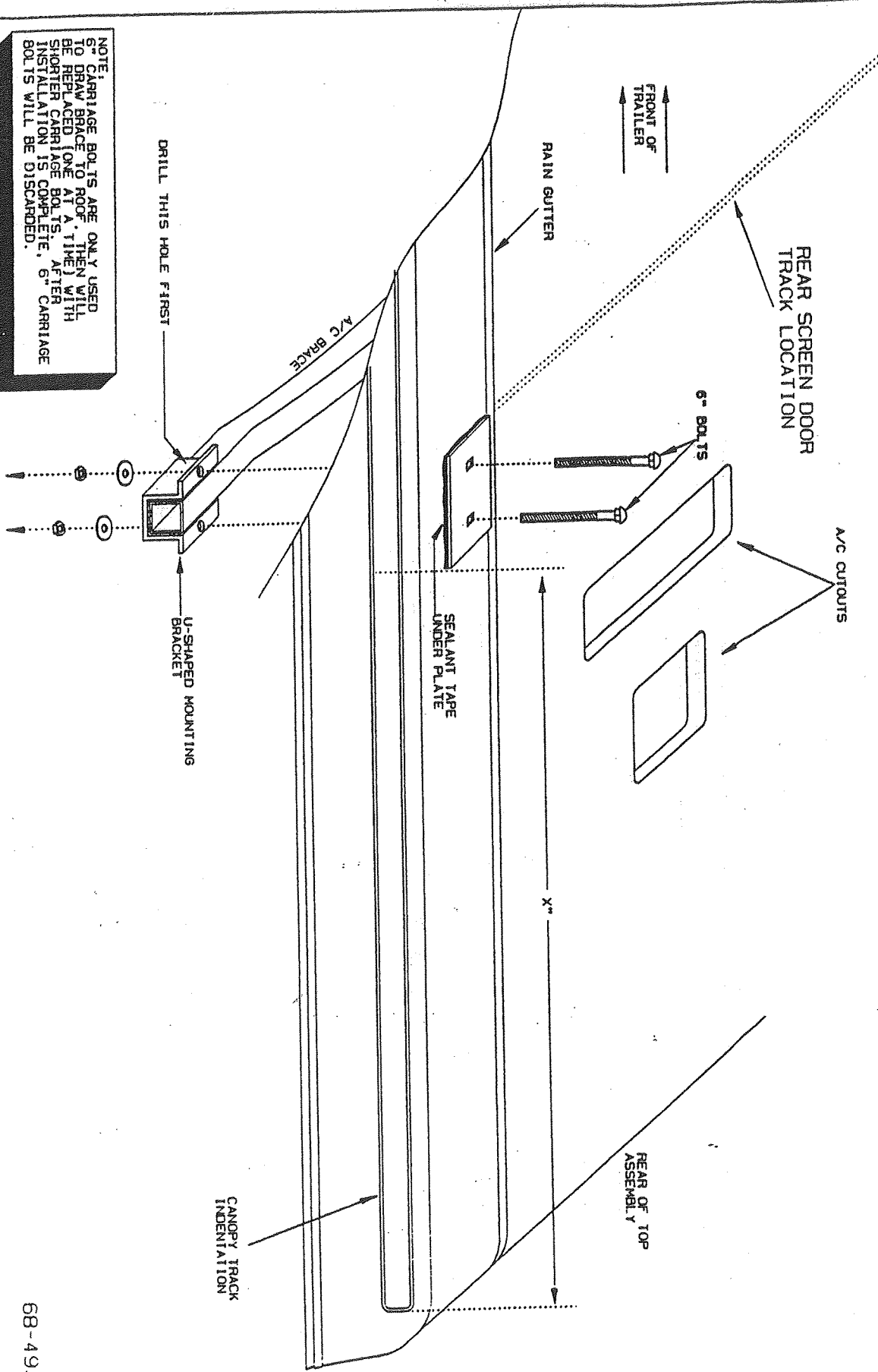
FIGURE 2 ROADSIDE REAR VIEW (SUNRIDGE AND BAYSIDE MODELS ONLY)



NOTE:
6" CARRIAGE BOLTS ARE ONLY USED TO DRAW BRACE TO ROOF. THEN WILL BE REPLACED (ONE AT A TIME) WITH SHORTER CARRIAGE BOLTS. AFTER INSTALLATION IS COMPLETE, 6" CARRIAGE BOLTS WILL BE DISCARDED.

ROADSIDE REAR VIEW (EXCEPT SUNRIDGE AND BAYSIDE MODELS)

FIGURE 3



NOTE: 6" CARRIAGE BOLTS ARE ONLY USED TO DRAW BRACE TO ROOF. THEN WILL BE REPLACED (ONE AT A TIME) WITH SHORTER CARRIAGE BOLTS. AFTER INSTALLATION IS COMPLETE, 6" CARRIAGE BOLTS WILL BE DISCARDED.

FIGURE 4
 CURBSIDE REAR VIEW
 (SUNRIDGE AND BAYSIDE MODELS ONLY)

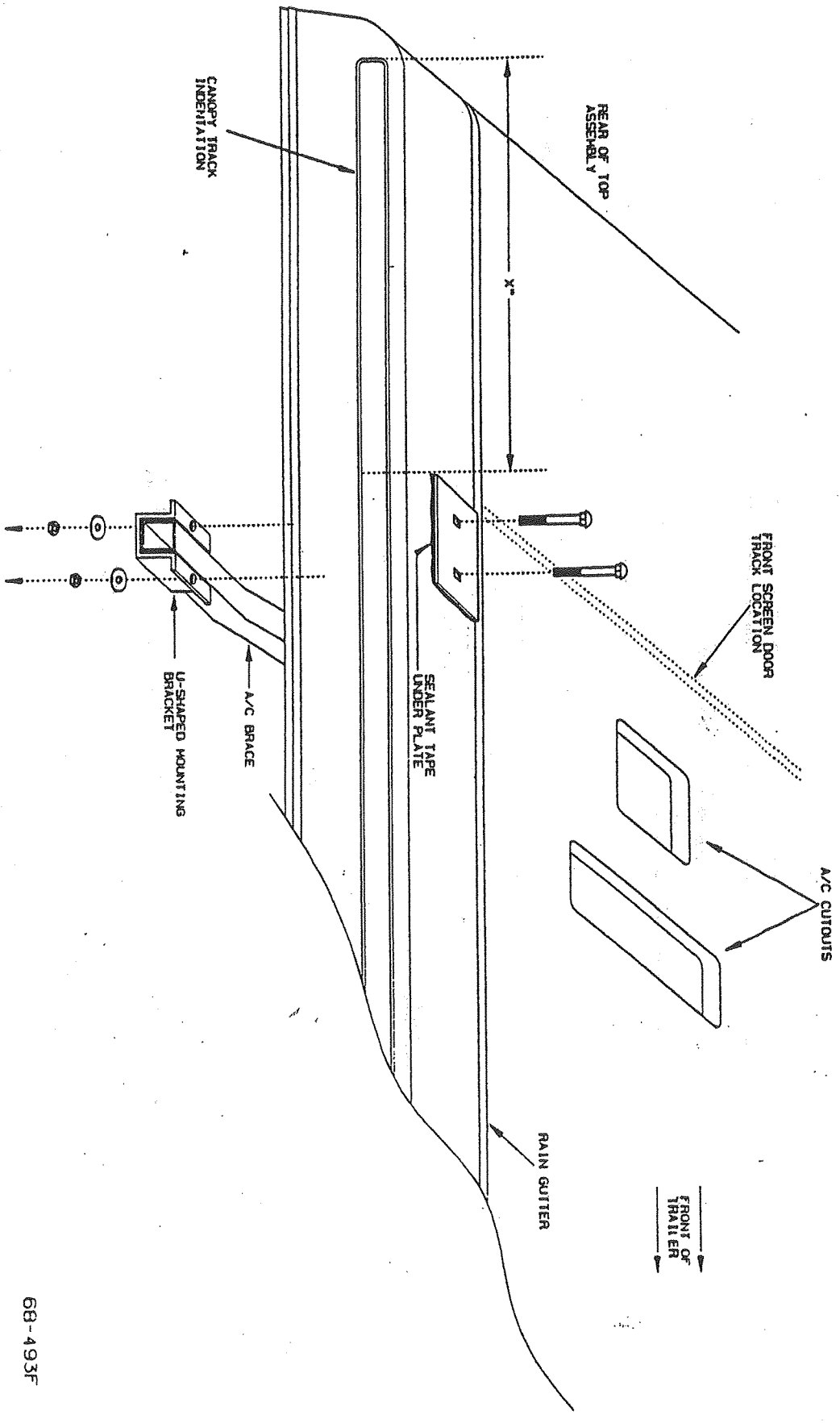


FIGURE 5
CURBSIDE REAR VIEW
(EXCEPT SUNRIDGE AND BAYSIDE MODELS)

