

FTCA, INC.

INSTALLATION INSTRUCTIONS

1968H389

July 2004

PART NUMBER: 4742B9091 2 BAR DESTINY/PIONEER/FOUR SEASON SERIES ROOF RACK

- For Use on:**
- All 1996 - present Taos models
 - All 1992 - 1995 Destiny series folding trailers
 - All 1996 - 1997 Laredo model trailers
 - All 1996 Sedona model trailers
 - All 1988 and prior Americana series trailers
 - All Four Seasons series trailers
 - All Pioneer series trailers
 - All Evergreen folding trailers
 - All 2004 - present Tucson models

4742B9091 (2 Bar) Kit Contains:

- | | | | |
|-----|---|---------------|---------------------------------------|
| 8 | - | 1200E206 | 1/4" x 1 1/2" S.S. carriage bolt |
| 8 | - | 4755-265 | acorn nut |
| 8 | - | 4755-266 | lock washer |
| 8 | - | 1203-865 | rivet |
| 2 | - | 4742A911 | crossbar |
| 4 | - | 4742B915 | roof rack riser |
| 4 | - | 4742-919 | offset mounting plate |
| 4 | - | 4743-339 | plastic end cap |
| 1 | - | 4747A388 | caution decal |
| 18" | | 435-00-000-59 | tacky tape |
| 4 | - | 4738-258 | S.S. Tek screw |
| 8 | - | 4733F4136 | 3/4" Tek screw (2005 - current units) |
| 4 | - | 4676-442 | mounting plate (2005 - current units) |

Crossbar Storage Capacity: The maximum weight capacity of the roof rack is 75 pounds evenly distributed per crossbar or 150 pounds evenly distributed over multiple crossbars

CAUTION: When outfitting a camper top for cargo carrying, the trailer's GVWR and tire load range rating must be considered in addition to the weight of an air conditioner, if applicable, and other vehicle cargo such as take along water and general camping provisions. The camper's GVWR and tire load range rating are not to be exceeded. All roof top cargo with the exception of an air conditioner, if applicable, must be removed prior to raising the camper top or the top assembly and lift system warranty will be voided.

INSTALLATION OF DOUBLE CROSSBARS

1. Set-up trailer in normal open display manner.
2. Locate the screen door storage bracket mounted directly above the access door on the interior curbside panel of the top assembly.
3. Using the snap button hole on the screen door storage bracket as the starting point, measure 20" along the interior curbside cover towards the rear of trailer and 16" - 18" towards the front of trailer. Place a pencil mark on the painted surface of the metal cover at each of these measured points. See figure 1.
4. Duplicate the two curbside pencil marks made in Step 3 onto the roadside metal cover by measuring from the interior metal front cover to each pencil mark and transferring exact measurements to the roadside metal cover and marking. Reference Figure 1, dimensions A and B. Recheck all dimensions and confirm pencil marks to be in identical locations on both sides of the top assembly.

IMPORTANT: 16" minimum allowable spread between crossbars for installation of bike racks or basket case, maximum spread 44" (center of bar to center of bar).

For 2005 to current models, follow steps 5 through 12.

5. From each of the pencil marks made in steps 3 and 4, center mounting plates (4767-442) over these marks. Place them securely against the ceiling and valance track as in figure 5.
6. Recheck locations of each mounting plate to ensure that the curbside and roadside locations align with each other prior to drilling.
7. Using a pencil and the mounting plates as templates, mark the bolt locations on the ceiling.
8. Using a 9/32" drill bit, drill completely up through the top assembly at each bolt location marked in step 7. **DO NOT ANGLE HOLES WHEN DRILLING OR REAM OUT HOLES.** See figure 5.

9. Assemble each roof rack riser with one strip of tacky tape to cover the bottom surface of the riser contacting exterior portion of top assembly and two 1 1/2" carriage bolts per riser. See figure 5.
10. Remove the adhesive backing from the tacky tape on the risers and place the risers on the roof with the carriage bolts inserted in the holes drilled in step 8. See figure 5.
11. From inside the trailer, secure each riser assembly by placing one lock washer and one acorn nut onto each carriage bolt. Partially tighten with 7/16" wrench.
12. Using the Tek screws (4733F4136), attach the opposite end of each mounting plate to the side cove. See figure 5.

For 2004 models, follow steps 13 through 21.

13. From each of the pencil marks made in steps 3 and 4, establish two center points for drilling fastening holes through the interior aluminum cove for attachment of the offset mounting plates. Each center point measuring 1 1/2" in front of and behind the pencil mark and 5/16" in from the top edge of the cove molding as illustrated in figure 2.
14. Recheck locations of each offset mounting plate to ensure that the curbside and roadside locations align with each other prior to drilling.
15. Using a center punch and hammer, indent each of the 8 center points marked in step 13.
16. Using a drill and a 3/16" drill bit, drill through the indented center points on the metal cove. **DO NOT DRILL THROUGH THE ENTIRE TOP, ONLY THE METAL COVE AND PANELING.**
17. Fasten each offset mounting plate to the interior metal cove using two rivets supplied. See figure 3. If any rivets retaining the interior metal cove interfere with fastening the offset plate flush along the cove, drill off the interfering rivet heads.
18. Using the two remaining holes in the offset mounting plates installed above as templates, drill completely up through the top assembly using a 9/32" drill bit. **DO NOT ANGLE HOLES WHEN DRILLING OR REAM OUT HOLES.** Repeat step for remaining three offset mounting plates. See figure 3.
19. Assemble one roof rack riser, one strip of tacky tape to cover bottom surface of riser contacting exterior portion of top assembly), and two 1 1/2" carriage bolts together. See figure 4.
20. Remove the adhesive backing from the tacky tape on the risers and place the risers on the roof with the carriage bolts inserted in the holes drilled in step 18. See figure 4.

21. From inside the trailer, secure each riser assembly by placing one lock washer and one acorn nut onto each carriage bolt. Partially tighten with 7/16" wrench.

NOTE: Do not completely tighten until crossbars have been installed. To access the riser carriage bolts from outside the trailer, it may be advantageous to remove the side tenting sections.

22. Slide the crossbars into the risers. Center the crossbars in the risers.

CAUTION: Do not drop the crossbars or damage to the top assembly will occur.

23. Fasten the crossbars to the risers by inserting a self-tapping Tek screw through the hole on the top of the riser and into the crossbar. After installing the Tek screw, remove it and clean any metal shavings from the crossbar and riser. Apply silicone or Loc-tite to the threads of the screw and reinsert.

24. Fully tighten all roof rack riser carriage bolts on inside of trailer top. If necessary, add additional flat washers to achieve proper tension.

25. Trim excess tacky tape from around base of riser and seal around base of riser with caulking.

26. Affix one caution decal to the curbside crossbar directly above the access door.

27. Recheck tightness of all bolts and nuts.

28. Insert two plastic end caps into end of each crossbar.

29. Install bike racks or basket case per instructions included with each accessory package.

INSTALLATION OF DOUBLE CROSSBARS FOR CANOE OR BOATS

1. Install the roof rack risers as close to the front and rear radiused edges of the top assembly as allowed for each top configuration.

2. Follow installation procedure. Pencil marks established in Step 3 for locating the offset mounting plates on the interior metal side covers must be measured starting at the lift pocket cover (Pioneer) or front/rear metal covers (Destiny) towards the center of the top assembly. When measuring, allow a minimum clearance distance of 2" from either the lift pocket cover or metal end covers. Maximum crossbar spacing can then be obtained on the top. Refer to Arcadia and Sedona notes at the end of Step 3.

INSTALLATION OF DOUBLE CROSSBARS ON TRAILERS EQUIPPED WITH AIR CONDITIONERS

1. The crossbars should be installed in front of, behind, or straddled over the air conditioner depending upon the size of the top assembly and the effect of the load to be carried on the trailer hitch. Follow steps for installation of double crossbars.

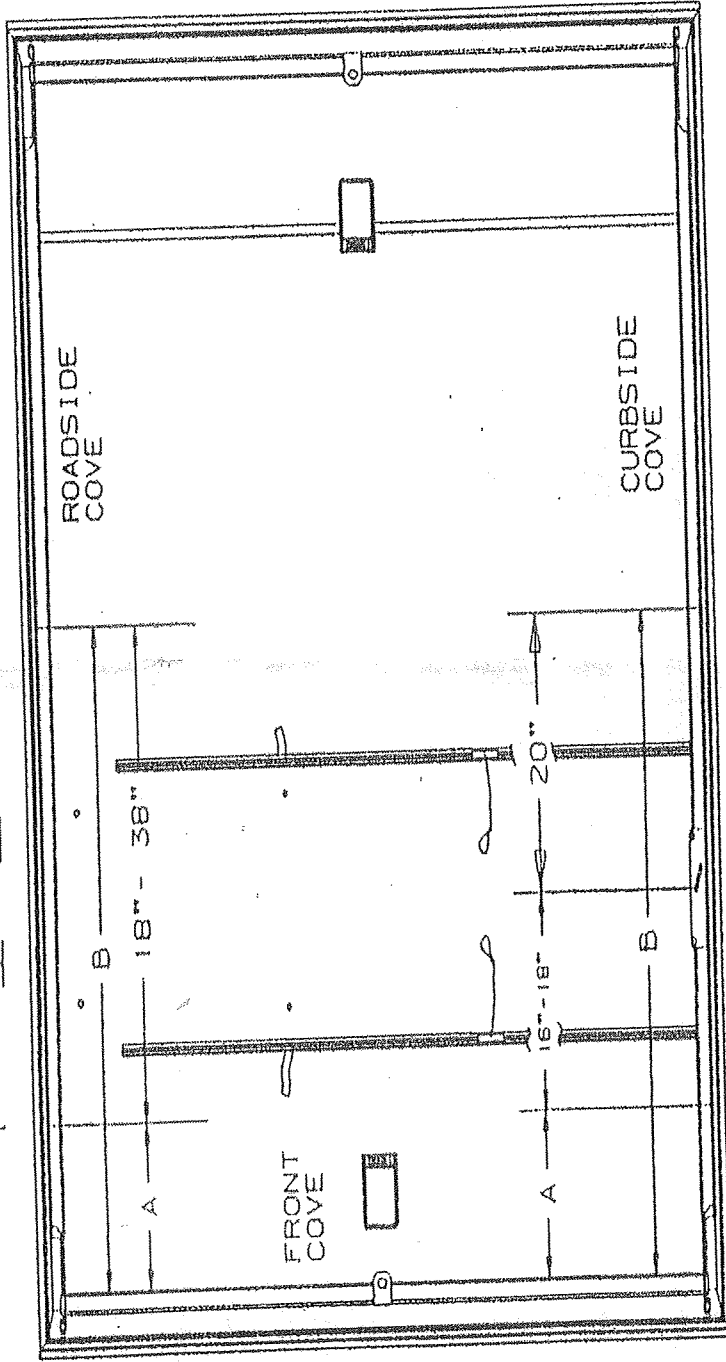
NOTE: If the crossbars are straddled, four bike racks will not be permissible on the rack.

IMPORTANT: Trailers should maintain 10% of total trailer weight on the hitch assembly. Crossbars minimum allowable spread is 16" , maximum spread is 44" (center of bar to center of bar) for installation of a bike rack or cargo basket.

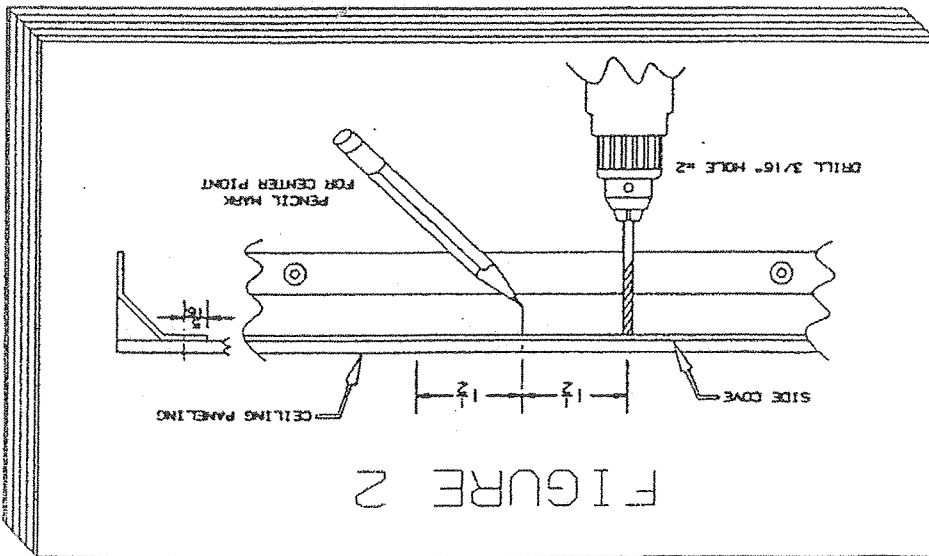
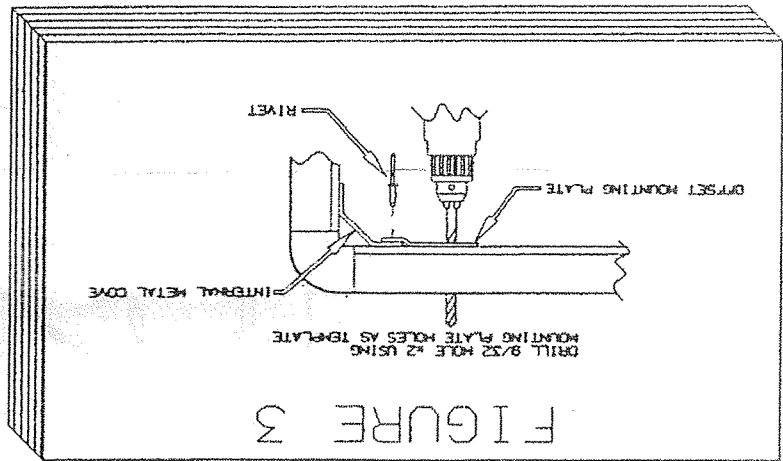
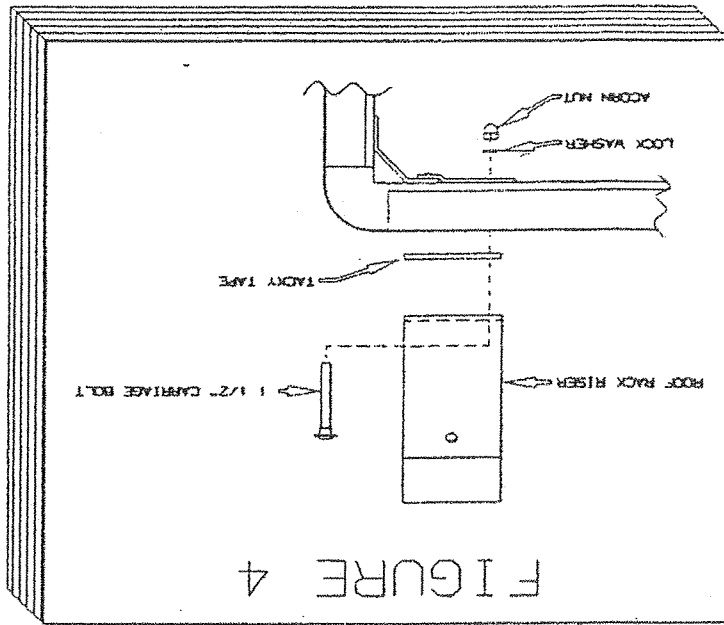
INSTALLATION OF DOUBLE CROSSBARS FOR EVERGREEN MODEL TRAILERS (Ramp Side Rail Storage)

1. Follow steps for installation of double crossbars. The first pencil marks in Step 3 should be located 2" away from the front lift pocket cover. The second pencil mark should measure 96" from the first pencil mark towards the rear of the top along the side cove.

FIGURE



NOTE: USE MEASUREMENT "A" & "B" FROM CURBSIDE COVE TO TRANSFER MEASUREMENT TO ROADSIDE COVE



1968K47B

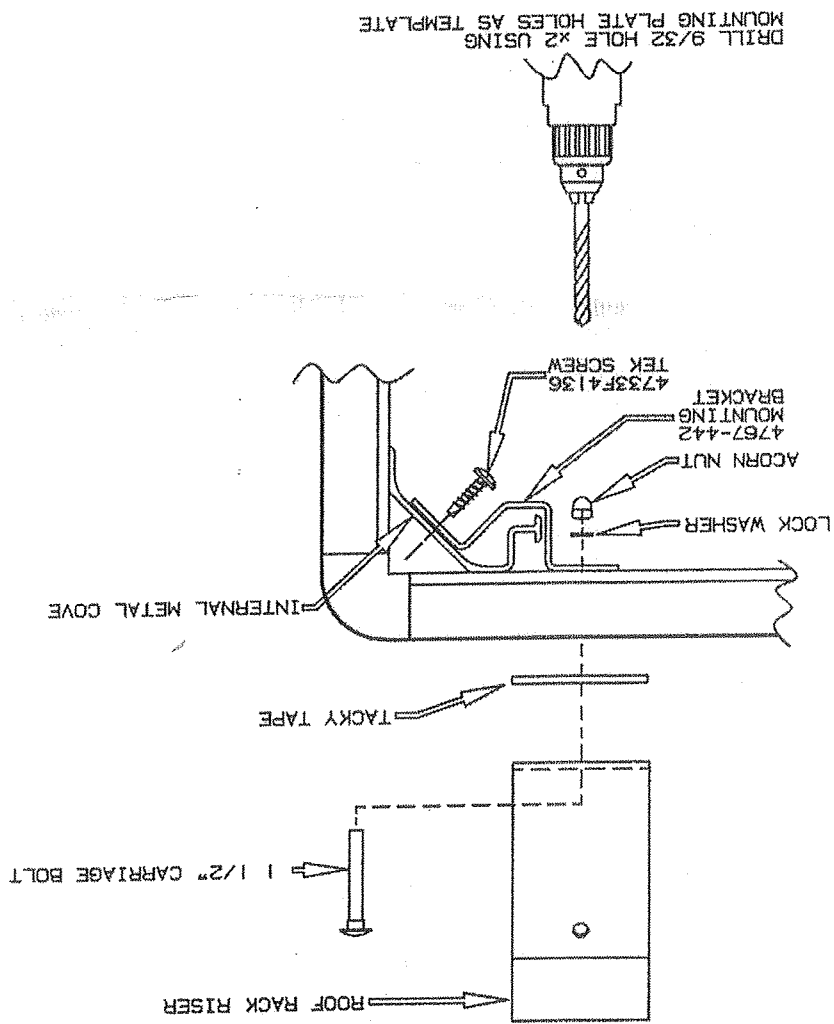


FIGURE 5