

*Folding
Trailers
Built for
Life!*



Grand Tour SeriesPg. 4
Destiny SeriesPg. 6
SpecificationsPgs. 8 & 9
Warranty InformationPg. 11
Standard Features . . .Pg. 12 & 13
AccessoriesPg. 14 & 15

1 • 9 • 9 • 9



The Most Trusted Name in Outdoor Recreation



BY FLEETWOOD.

Since 1900

A Proud Family Tradition

Quality and value have been part of the Coleman® tradition ever since our company was founded. The people that work at Fleetwood Folding Trailers understand that you, our customer, have many other product options from which to choose.

We understand that our future and job security can only be secure as long as we continue to provide our customers with innovative products that meet their needs and requirements, and that every Coleman trailer must be built to the highest quality standard. Just as if we were building it for one of our associates families...which happens more frequently than you might think. The name Coleman has been synonymous with camping to millions of loyal customers for decades. Our pledge is to continue the tradition.

Whether you are a veteran camper looking to upgrade or just starting out, we can help take the hassle and confusion out of finding the best value in a folding trailer. We provide you with the selection and choice of products you need and all the support you expect. We recognize that when you invest in a Coleman® Folding Trailer by Fleetwood®, you're investing in your family.

We respect the investment you're making when you decide to purchase our product and we take our responsibility seriously. Please have a look at the different models and features we have to offer you in 1999...from our family to yours.



Through the **Circle of Excellence Customer Satisfaction Program** every Coleman® Folding Trailer owner is contacted to insure our product is meeting our customer's expectations.

Expand your camping comfort...

All new for 1999 are three Grand Tour Ultra Glide-Out™ models, the Bayside, Niagara and Utah. There's no better way to enjoy the great outdoors than with the expanded living space offered by Coleman® Folding Trailer's exclusive Ultra Glide-Out™* design. The perfect solution for quality family time. 

*Glide-Out™ design patent pending



▲ The Ultra Glide-Out™ expands your living space, while bringing your family closer together.



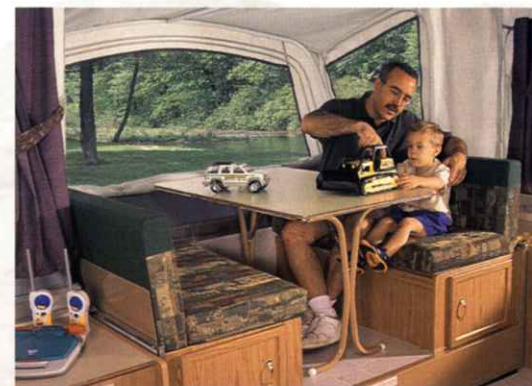
▲ 3-Way refrigerator with room for 2 liter bottles and plenty more.



All of the families photographed for our literature are Fleetwood associates who also enjoy camping and the great outdoors.



Coleman Folding Trailer's unique Ultra Glide-Out sets up effortlessly and requires no stabilizers.



▲ The Ultra Glide-Out dinette provides spacious seating.



The tenting is permanently attached providing a positive weather tight seal.



▲ Convenient under seat storage basket. (Bayside & Niagara Models only)

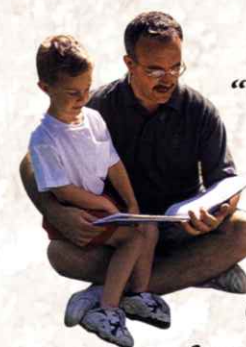


▲ Large open floor space...

This page features the Bayside model, shown with optional canopy.



Set-up is complete with the insertion of the interior support rod... easy as 1, 2, 3! Ultra Glide-Out is tested to over 1,000 lbs. capacity.



"We love spending time together enjoying the great outdoors. One thing's for sure, these are the times a family will always treasure."



CAMPING TIP

Keep A Journal: Encourage your children to keep a journal of daily activities, wildlife sightings and hiking details. This information can be used later in writing letters to family and friends or for school writing assignments.

The Ultimate Camping Experience with the Grand Tour Series...

Folding Trailers Built For Life

GRAND TOUR SERIES

The comfort and convenience of our 1999 Grand Tour Series is evident from the moment you see it.



Wherever your travels take you, you'll have the time-tested quality and reliability of a Coleman Folding Trailer by Fleetwood. A Coleman Folding Trailer will be the most enjoyable travel companion your family has ever experienced! 🏡



▲ All the space you need for the things you enjoy most.

Optional Decor Group Package

Bayside, Niagara, Utah, Westlake & Mesa

- 2 Sets Fitted Bed Sheets (King Size) & Pillow Cases
- Camper Caddie
- Vanity Mate
- Sink Cover/Cutting Board
- 1 Portable Light (Bayside & Niagara 2 Portable Lights)

Cheyenne, Sea Pine & Santa Fe

- 1 Set Fitted Bed Sheets (King Size) & Pillow Cases
- 1 Set Fitted Bed Sheets (Regular Size) & Pillow Cases
- Camper Caddie
- Vanity Mate
- Sink Cover/Cutting Board
- 1 Portable Light



▲ Convenient Cassette Toilet and Shower.



▲ Fast and easy clean-up with hot & cold outside shower.



▲ Good times with good friends after a day of hiking.



▲ Easy access to the 26 cu.ft. storage trunk.



▲ The bay window galley area provides plenty of storage, plus a flush mounted stove for more usable counter space.



▲ Spice Rack.

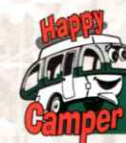


▲ Cutlery Tray.



“There’s nothing like the feel of a soft step on fragrant pine needles and

the glimpse of a rabbit or deer to bring you closer to nature. Our Coleman Folding Trailer has given us the opportunity to enjoy these special moments with family and friends.”



CAMPING TIP

Place rice in your salt shaker to prevent the salt from clumping... the rice absorbs moisture and keeps the salt dry.



Camping Fun and Comfort with the Destiny Series...

Folding Trailers Built For Life

Our new 1999 Destiny Series combines plenty of storage and comfort, plus many additional standard features that will enhance your camping experience.



There's no better way to enjoy the great outdoors than in a Coleman Folding Trailer by Fleetwood.



▲ The perfect combination...biking, camping and good times.

Optional Decor Group Package:

Santee & Taos

- Camper Caddie
- Vanity Mate
- Sink Cover/Cutting Board
- 1 Portable Light

DESTINY SERIES



Optional large 3-way gas/electric refrigerator has adjustable shelves and plenty of storage space.



▲ The Santee's Storage Deck* provides infinite cargo options.

*Storage Deck Design patent pending.

This page features the Santee model.



▲ There's plenty of space, making our relaxing time together much more enjoyable.



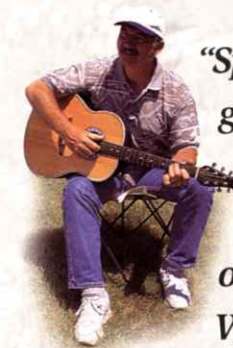
▲ Additional sleeping space with convertible dinette bed.



▲ Enjoying the simple pleasures of life with family...



▲ Handy tent pockets are great storage for sunglasses, flashlights, books or other small necessities...



“Spending time with our grandchildren singing around the warmth of a campfire is one of our best memories. We hope they continue the same tradition of singing these songs with their families.”



CAMPING TIP

Wear light colored clothes. Mosquitoes are attracted to dark clothes...

1999 SPECIFICATIONS

	Grand Tour Series								Destiny Series	
	Niagara	Bayside	Utah	Westlake	Mesa	Cheyenne	Sea Pine	Santa Fe	Santee	Taos
STRATA (ABS) One-Piece Roof	Std.	Std.	Std.	Std.	Std.	Std.	Std.	Std.	N/A	N/A
Electric Power Lift	Opt.	Opt.	Opt.	Opt.	Opt.	Opt.	Opt.	Opt.	Opt.	Opt.
EZ-Crank Stabilizers w/Sand Pads	Std.	Std.	Std.	Opt.	Opt.	Opt.	Opt.	Opt.	N/A	N/A
EZ-Crank Stabilizers	N/A	N/A	N/A	Std.	Std.	Std.	Std.	Std.	N/A	N/A
Swing Down Stabilizers	N/A	N/A	N/A	N/A	N/A	N/A	N/A	N/A	Std.	Std.
Road Height	55"	55"	55"	55"	55"	55"	55"	55"	55"	47"
Length (Closed)	7'3"x 19'	7'3"x 19'	7'3"x 19'	7'3"x 16'10"	7'3"x 19'	7'3"x 16'9"	7'3"x 14'9"	7'3"x 14'9"	7'3"x 16'9"	6'8"x 11'5"
Length (Open)	25'9"	25'9"	25'9"	25'9"	25'9"	21'11"	21'11"	21'11"	21'11"	17'
Tire Size	ST185/80D13	ST185/80D13	ST185/80D13	ST185/80D13	ST185/80D13	B78-13ST	B78-13ST	B78-13ST	B78-13ST	5.30x12
Polished Tire Trim Ring	Std.	Std.	Opt.	Opt.	Opt.	Opt.	Opt.	Opt.	Opt.	N/A
Base Vehicle Weight, lbs.	2,670	2,595	2,400	2,142	2,262	1,900	1,650	1,650	1,700	995
Base Axle Weight, lbs.	2,525	2,460	2,265	1,978	2,123	1,790	1,475	1,475	1,546	870
Base Hitch Weight, lbs.	145	135	135	164	139	110	175	175	154	125
Electric Brakes	Std.	Std.	Std.	Std.	Std.	Opt.	Opt.	Opt.	Opt.	Opt.
Cargo Capacity, lbs.	580	655	850	1,108	988	1,100	850	850	800	705
Storage Trunk, cu. ft.	26	26	26	N/A	26	26	N/A	N/A	N/A	N/A
Storage Deck	N/A	N/A	N/A	N/A	N/A	N/A	N/A	N/A	Std.	N/A
Refrigerator Capacity, qts.	57	57	Opt.	Opt.	Opt.	Opt.	Opt.	Opt.	Opt.	N/A
Built-In Ice Chest(s), qts.	N/A	N/A	57	57	57/76	57	57/76	57	57	57
Water Storage, gal. (UF = under floor)	20 (UF)	20 (UF)	20 (UF)	20 (UF)	20 (UF)	10 (UF)	10 (UF)	10 (UF)	10	5
Sleeping Capacity	8	8	9	8	9	8	8	7	7	6
Living Area, sq. ft.	165	165	165	155	155	130	130	130	130	90
Interior Height	80"	80"	80"	80"	80"	80"	80"	80"	79"	79"
Shower	Std.	N/A	N/A	Std.	N/A	N/A	N/A	N/A	N/A	N/A
Cassette Toilet	Std.	N/A	Opt.	Std.	N/A	N/A	N/A	Opt.	N/A	N/A
Hot Water w/Mixer Faucet & Demand Elec. Water Pump	Std.	Std.	Opt.	Std.	Opt.	Opt.	Opt.	Opt.	N/A	N/A
Outside Shower	Std.	Std.	Opt.	Std.	Opt.	Opt.	Opt.	Opt.	N/A	N/A
Potti Storage Cabinet	N/A	Std.	Std.	N/A	Std.	Std.	Std.	Std.	Std.	Std.
Swing-Level Galley	Std.	Std.	Std.	Std.	Std.	Std.	Std.	Std.	N/A	N/A
Spice Rack & Cutlery Tray	Std.	Std.	Std.	Std.	Std.	Std.	Std.	Std.	N/A	N/A
Fold-Over Galley	N/A	N/A	N/A	N/A	N/A	N/A	N/A	N/A	Std.	Std.
Hi-Pressure Outside Stove	Std.	Std.	Std.	Std.	Std.	Std.	Std.	Std.	N/A	N/A
Inside/Outside Stove	N/A	N/A	N/A	N/A	N/A	N/A	N/A	N/A	Std.	Std.
Bed Size (mattress only)	77"x 70"	77"x 70"	77"x 70"	77"x 70"	77"x 70"	77"x 48"	77"x 48"	77"x 48"	77"x 48"	72"x 48"
Bed Size (mattress only)	77"x 70"	77"x 70"	77"x 70"	77"x 70"	77"x 70"	77"x 70"	77"x 70"	77"x 70"	77"x 70"	72"x 48"
Quilted Bed Mattresses	Std.	Std.	Std.	Std.	Std.	Std.	Std.	Std.	N/A	N/A
Conv. Dinette Bed	71"x 42½"	71"x 42½"	71"x 42½"	80½"x 52"	70"x 39"	73"x 41"	80½"x 41"	71½"x 41"	68"x 41"	74"x 40"
Slide-Out Bed Size	N/A	N/A	70"x 32½"	52½"x 48"	80"x 33"	70"x 30"	80"x 33"	N/A	N/A	N/A
Dinette Table Size	39"x 28½"	39"x 28½"	39"x 28½"	39"x 28"	39"x 30"	39"x 30"	39"x 30"	39"x 30"	39"x 26"	39"x 30"
Cabinet Storage, cu. ft.	31	40	35	32	46	31	39	37½	40	24
Outside Storage Access	Std.	Std.	Std.	N/A	Std.	Std.	N/A	N/A	Std.	N/A
Stepper Door	Std.	Std.	Std.	Std.	Std.	Std.	Std.	Std.	N/A	N/A
Self Storing Step	N/A	N/A	N/A	N/A	N/A	N/A	N/A	N/A	Std.	Std.
Spare Tire	Std.	Std.	Std.	Std.	Std.	Std.	Std.	Std.	Std.	Std.
Box Size (inside)	12'	12'	12'	12'	12'	10'	10'	10'	10'	8'

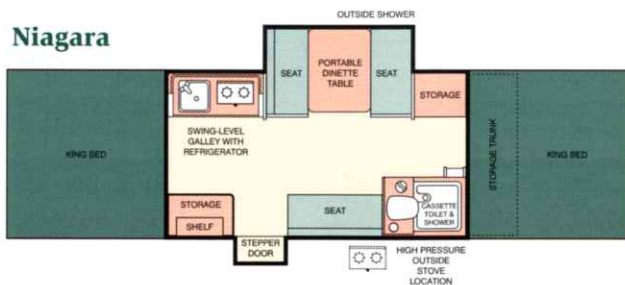
- Gross Vehicle Weight Rating is equal to Base Vehicle Weight plus Cargo Capacity.
- When ordering installed refrigerator, the built-in ice chest is deleted.
- Options May Be Dealer Installed.

Grand Tour Extras... At No Extra Charge!

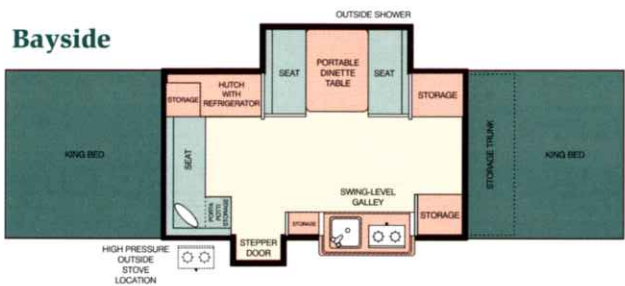
- One-Piece Seamless STRATA™(ABS) Roof*
 - Exclusive Natural Comfort™ Quilted Bed Mattresses*
 - Roof Air Conditioner Ready
 - Sectional Sunbrella® 302 Breathable Acrylic Tenting*
 - Swing-Level Galley with Full Upper & Lower Storage*
 - Wide & Safe Stepper™ Door*
 - Extra Wide, One-Piece Screen Door
 - Two Stoves- High Pressure Outside Stove* & Flush Mount Low Pressure Inside Stove
 - Portable Dinette Table*
 - Comfort Zone™ High Density Foam Seat Cushions*
 - Posi-Lock Stainless Steel Lift System*
 - Clear Vinyl Windows*
 - Extra Fine Mesh Screening*
 - Under-Floor Water Storage
 - Two Double Ceiling Lights
 - EZ-Crank Down Stabilizer Jacks
 - One-Piece Structurwood® Floor & Bed Wood*
 - Spare Tire Standard
 - Tubular Steel Frame*
 - Full Perimeter Aluminum Bed Frames*
 - Permanently Attached Bed Supports*
 - Impact Resistant Front & Rear ABS Panels*
 - Scratch Resistant Krystal Kote® Aluminum Side Panels*
 - Self-Storing Swivel Tongue Dolly Jack*
 - Vinyl Spare Tire Cover
 - Vinyl Gas Bottle Cover
 - Two Sets of Privacy Curtains
- Grand Tour Elite**
Additional Special Features
STANDARD on Bayside & Niagara Models.
- 3-Way Gas/Electric Refrigerator
 - Hot Water w/Mixer Faucet & Demand Electric Water Pump
 - Outside Shower w/Hot Water
 - Waist Level Posi-Lock Stainless Steel Lift System*
 - EZ-Crank Down Stabilizer Jacks with Sand Pads*
 - ABS Spare Tire Cover
 - ABS Gas Bottle Cover
 - Electric Brakes

GRAND TOUR FLOOR PLANS

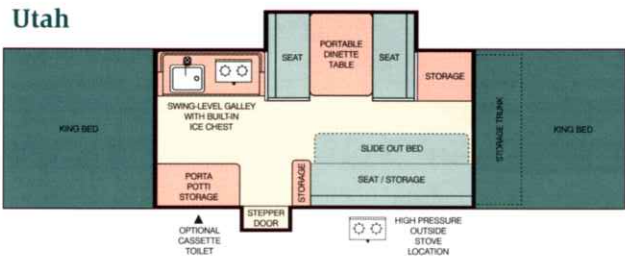
Niagara



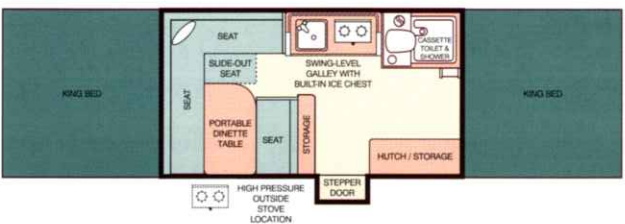
Bayside



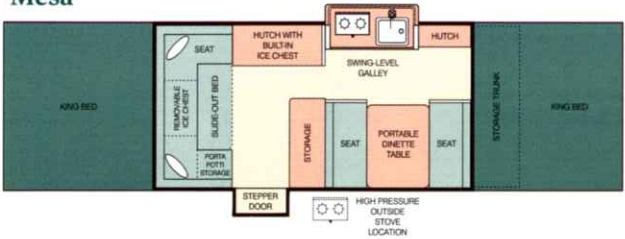
Utah



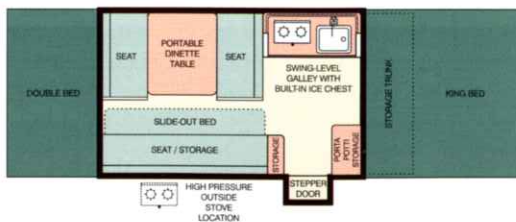
Westlake



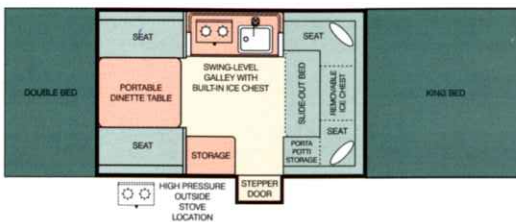
Mesa



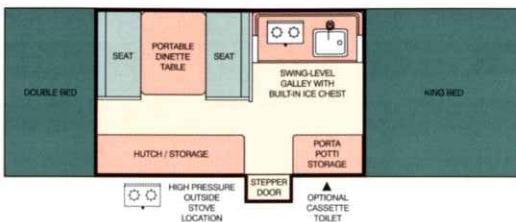
Cheyenne



Sea Pine

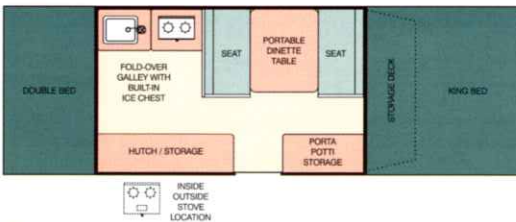


Santa Fe

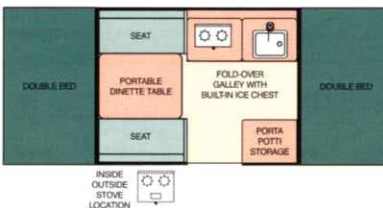


DESTINY FLOOR PLANS

Santee



Taos



Destiny Extras... At No Extra Charge!

- Insulated Aluminum Roof
- Roof Air Conditioner Ready (Except Taos Model)
- Sectional Sunbrella® 302 Breathable Acrylic Tenting*
- Full Upper & Lower Storage Fold-Over Galley
- Extra Wide One-Piece Screen Door*
- Large Built-In Ice Chest
- Transportable Inside/Outside Stove
- Portable Dinette Table*
- Comfort Zone™ High Density Foam Bed & Seat Cushions*
- Posi-Lock Stainless Steel Lift System*
- Clear Vinyl Windows*
- Extra Fine Mesh Screening*
- Two Ceiling Lights
- Swing Down Stabilizer Jacks
- One-piece Structurwood® Floor & Bed Wood*
- Spare Tire Standard
- Tubular Steel Frame*
- Full Perimeter Aluminum Bed Frames*
- Permanently Attached Bed Supports*
- Impact Resistant Front & Rear ABS Panels*
- Scratch Resistant Krystal Kote® Aluminum Side Panels*
- Self-Storing Swivel Tongue Dolly Jack*
- Two Sets of Privacy Curtains
- Vinyl Gas Bottle Cover
- Vinyl Spare Tire Cover
- Self Storing Slide-Out Step

*Look for features detailed on pages 12-13, or Coleman Advantage illustration on page 10.



SUNBRELLA 302 is a registered trademark of Glen Raven Mills, Inc.
STRUCTURWOOD is a registered trademark of Weyerhaeuser Co.
STRATA is a trademark of Advance USA.

Lightweight, free-standing portable dinette table can be used anywhere.

* Strong, dependable, stainless steel lifter system features a Posi-Lock crank and self draining lifter arms that won't rust or bind. (Limited Lifetime Warranty)

High density, Comfort Zone™ seat cushion foam provides durable comfort.

Automotive-style, double sidewall construction allows body panels to be easily and inexpensively replaced if necessary.

Krystal-Kote® finish aluminum side body panels resist scratching and marring.

ABS impact resistant plastic front and rear body panels provide protection from road gravel and stones.

Under floor water storage on all Grand Tour Series models frees up valuable interior storage space.

Seamless, molded wheel wells that won't rust or allow water or dust to enter the trailer.

Exclusive, D-range 13" tires with increased capacity and durability. (Taos offers 12" tires) Wheels are attached with 5 lug nuts for added safety.

* Exclusive, self-storing Stepper™ door is extra wide, sturdy and safe (Santee, & Taos models have slide-out self-storing step).

* Seamless, one-piece Structurwood® flooring provides a strong, consistently level floor that won't warp or delaminate, plus offers a stable underlayment to keep your vinyl floor looking good. (Limited Lifetime Warranty)

* Feature detailed on pages 12-13.

* Built-in ice chest or 3-way gas/electric refrigerator offers plenty of food storage. (refrigerator not available in Taos model).

* Molded, one-piece STRATA™(ABS), seamless roof is strong, durable and will not leak...ever! (Santee, & Taos models offer insulated aluminum roof) (Limited Lifetime Warranty on ABS roof / Limited 5yr Warranty on aluminum roof)

* Clear vinyl windows for a brighter interior on overcast days, plus fine mesh screening to keep even the tiniest insects out.

* Exclusive, two-stove cooking convenience on Grand Tour Series and single inside/outside transportable stove on Destiny Series models.

* Spacious upper and lower storage in the Swing-Level™ galley. (Fold Over galley in the Santee, & Taos models.)

Angled conestoga bed design allows end windows to be opened for cross-ventilation even in a rainstorm.

*Sunbrella® 302 acrylic tenting fabric is highly breathable so it won't trap heat or odors, plus it will not crack, mildew, dry rot, fade or leak...and it's hypoallergenic.

Natural Comfort™ quilted bed mattresses provide comfortable therapeutic support for a good night's rest. (Quilted mattresses not available on Santee & Taos models.)

*Seamless, one-piece Structurwood® beds have full perimeter aluminum frames to prevent warping and provide easy setup without binding. (All beds tested to over 1,000 lbs. except Taos model, which is tested to 750 lbs.)

* Permanently attached bed supports that can't be lost or left behind.

* Full perimeter, tubular steel frame offers greater strength and durability plus protects trailer wiring from road debris. (Limited Lifetime Warranty)

* Exclusive, self storing, swing-up tongue dolly jack with permanently attached wheel. Dolly jack will not interfere with tow vehicle's rear mounted spare tire or tailgate.

Front storage trunk provides 26 cubic feet of space for camping gear, with easy access from the top, side or inside the trailer. (Available on select models)

* Wide, one-piece aluminum screen door with automatic spring return. (Door not shown)

* EZ-Crank-Down stabilizers provide a convenient, easily accessible and dependable way to stabilize the trailer. (Destiny Series offer Swing-Down Stabilizers.) (Stabilizers not shown)

Quality CONSTRUCTION

The Coleman® Folding Trailer Advantage!

Offering the Best Design Features and Construction Available...





Protection for ... ANYTHING Mother Nature throws your way!

Sunbrella 302' Acrylic Tenting

Is resistant to cracking, dry rot, mildew, fading and abrasion. It's highly breathable so it won't trap heat, moisture or odors.

The tenting is assembled using continuous double needle stitching and double lap-fold seams to prevent unraveling and provides a watertight seal.

Stainless Steel Lifter System

All lift components including lift arms, cables and needle bearing pulleys are non-corrosive stainless steel providing years of trouble free operation.

Each lift arm extends through the trailer sidewall and is attached to the frame. This allows water to flow freely through the arm and onto the ground. (Not with other brands)

Molded STRATA™ One-Piece Seamless Roof

ABS with an injected foam core provides strong, durable protection against all elements, no matter how severe.

The urethane foam insulation provides a heat barrier during hot summer days and a noise barrier during driving rain...and is guaranteed against hail damage.

One-Piece Screen Door

The screen door is easily set in place and provides a tight, secure seal along the tenting sides and trailer walls to prevent leaking or insects from entering.

Angled Bunk Ends

The tapered Conestoga-style bunk ends combined with the exclusive fine mesh screening allow you to keep end windows open for good ventilation, even during rain storms.



"Engineered To Be The Best"

**"We Back Our Product Better
Because We Build It Better"**

1999 COLEMAN® FOLDING TRAILERS

HASSLE FREE
WARRANTY

THE INDUSTRY'S BEST BUYER PROTECTION PLAN

LIMITED LIFETIME*

MOLDED STRATA™ (ABS) ONE-PIECE ROOF
(Including Lifter System)
TUBULAR STEEL FRAME

ONE-PIECE STRUCTURWOOD® FLOOR

ONE-PIECE STRUCTURWOOD® BED PLATFORM

STAINLESS STEEL LIFTER SYSTEM

LIMITED FIVE YEAR*

EXCLUSIVE SUNBRELLA® 302
ACRYLIC TENTING MATERIAL
(Does not include acrylic tenting material)

LIMITED ONE YEAR*

ALL OTHER TRAILER COMPONENTS
(Including Tires)

With Fleetwood, you don't have to call all over the country if you need service. Your nearest authorized Fleetwood Folding Trailer dealer provides a single source for all your service needs. Your Fleetwood extended life warranty on specified structural components, covers repair of defective parts, labor, and freight for the first full year and repair of specific defective parts and labor for years two and beyond from date of purchase... for as long as you own your trailer.

*Ask your authorized Fleetwood Folding Trailer dealer for complete details. This warranty gives you specific legal rights and you may also have other rights which vary from state to state.

WE BACK OUR PRODUCT BETTER BECAUSE WE BUILD IT BETTER!

THE BEST TRAILERS MADE IN OUTDOOR RECREATION

With Coleman, you don't have to call all over the country if you have a problem. Your nearest authorized Coleman Folding Trailer dealer provides a single source for all your service needs.



CAMPING TIP

Freezing water in cardboard milk cartons before your trip makes convenient small block of ice...





The Strongest Roof in the Industry with a Limited Lifetime Guarantee! Coleman's, patented one-piece STRATA™ (ABS) roof is guaranteed not to leak...ever! It's extremely strong, durable design protects against all types of harsh weather, including damaging hail.



Most Dependable Lift System in the Industry with a Limited Lifetime Guarantee!

Heavy gauge, stainless steel lifter arms will not rust or bind. They run straight through the trailer's double sidewall construction attaching to the outer side of the frame. This allows water to drain completely through and onto the ground, eliminating the need for protective lift arm covers.

Standard Coleman® Features Provide You with Comfort, Convenience and Value



The Number One Outdoor Tenting Fabric in the Industry with an Exclusive Limited 5 Year Guarantee! Sunbrella® 302 fabric's superior breathability allows, humidity and cooking odors to escape while keeping rain out. The fabric will not fade, crack, mildew or dry rot, plus it's extremely strong, durable and hypoallergenic.

The clear vinyl windows provide an unobstructed view, providing a brighter interior even on cloudy days. Plus, the fine mesh screening lets in the slightest breeze while keeping the smallest insect out.

The tenting is assembled using continuous double needle stitching and double lap-fold seams to prevent unraveling and provides a watertight seal.



Exclusive Natural Comfort™ Mattresses!

Our quilted ComfortZone™ mattress uses environmentally safe EnviroCure® high density foam which provides a superior level of comfort, therapeutic support and durability for a good night's rest.



EZ Crank-down stabilizers provide a convenient easily accessible and dependable way to stabilize your trailer. These optional sand pads provide a solid foot print on soft ground or sand.

*(Not available on Santee, or Taos.)
(Sand Pads standard on Niagara, Bayside & Utah.)*



Self-storing swing-up dolly jack with permanently attached wheel will not interfere with tow vehicles tailgate or rear mounted spare tire.



Exclusive Swing-Level® galley design!

A fully stocked galley sets in place easily, plus the cantilevered upper galley stays parallel to the floor when positioning, preventing it's contents from spilling or tumbling upside down.

*(Santee & Taos models offer a full storage fold over galley.)
(Bayside model Swing-level galley shown.)*

The Strongest Frame in the Industry with a Limited Lifetime Guarantee...

The Coleman full perimeter tubular steel frame offers greater strength and durability over c-channel frames. The Coleman frame supports the weight of the trailer load and distributes road stress more evenly providing a stronger foundation and greater towing stability. (Test performed by an independent testing & research laboratory – showing c-channel frame failing at approximately 2,600 pounds of pressure... the tubular frame supporting 15,000 pounds of pressure.)



The Sturdiest and Most “User Friendly” Bed Support System in the Industry!

Seamless, one-piece Structurwood® beds with full perimeter aluminum frames prevent beds from warping and binding to make set-up quick and easy. Plus, with permanently attached bed supports there's no possibility for them to be lost or misplaced. Bunk ends are tested to support over 1,000 pounds. (750 pounds on Taos model)



Durable “Rough Country” Construction

Coleman features an interlocking, full perimeter skeletal framework of riveted and welded aluminum and steel that stands up to twisting and racking even on rough country roads.

The “Foundation” of the trailer is something most other brands don't want you to see.



Coleman's one-piece screen door is easy to set in place and is extra wide for easy access, plus has an automatic spring return so you can't accidentally leave the door open. The **Exclusive Stepper™ Door** (patent pending) design provides an exceptionally wide, safe and sturdy step for easy access to the trailer. (Santee & Taos models have a slide-out step.)



*Cooking is easy... inside or out! The **Grand Tour Series** comes standard with **two stoves**, an outside high pressure stove shown here that is efficient even in a wind storm and a low pressure flush mount stove on the inside galley. The **Destiny Series** comes with a transportable low pressure stove that can be used inside or out.*



CAMPING TIP

Always remember the Camper's Creed: Take only pictures, leave only footprints!

Natural Additions To Your Outdoor Adventures...

Folding Trailers Built For Life



▲ Double your living space with this Coleman Screen Room, featuring fine mesh screening and full perimeter skirting.



▲ Optional color coordinated fitted sheets and pillow cases are available for all Grand Tour Models.

Quality ACCESSORIES



▲ Keep cool this summer with roof mounted air conditioning. (1999 model trailers feature standard factory air prep, except Taos model. See your dealer for proper BTU sizing and installation requirements.)



▲ Exterior bunk-end hideaway provides attractive privacy for bikes and extra camping gear.



▲ Free-standing portable table provides additional dining space.



▲ Optional tongue mounted battery tray.



▲ Double your living space with this Coleman Deluxe Add-A-Room featuring fine mesh screening, privacy panels, clear vinyl rain flaps and heavy duty zippered sections for easy set-up and take down. (See page 3 for optional canopy, shown separately.)



▲ This handy soft side Camper Caddie™ wardrobe makes trip preparation quick, easy and provides loads of personal storage.



▲ Perfect out of the way bed storage shelf for night time items. (Not available on Destiny Taos model.)



▲ Set-up as easy as 1-2-3 with convenient electric power lift with remote control.



▲ A genuine Yakima® rack system gives you the option to take all your toys with you with the available canoe brackets & straps, bike carrier and cargo basket.



▲ This convenient fold-up wardrobe rack provides extra space to hang clothes. Standard on all Grand Tour models. (See your dealer for optional wardrobe rack for Santee and Taos models.)



▲ The Coleman Vanity Mate™ provides convenient storage for tooth brushes, toiletries, paper towels and other daily necessities.



▲ Sink cover cutting board



▲ Handy portable light



▲ Energy efficient LP gas forced-air furnace, with electronic ignition, provides 16,000 BTUs of heating with thermostat controlled comfort.



*Building
Magical
Moments
& Memories
To Last
A Lifetime*



Manufactured under license from the Coleman Company, Inc. by Fleetwood Folding Trailers, Inc.



Fleetwood Folding Trailers subscribes to the Tread Lightly principles of traveling only on designated routes, respecting the rights of others, educating yourself, and camping responsibly.



FLEETWOOD Folding Trailers, Inc. • 258 Beacon Rd. • Somerset, PA 15501 • (814) 445-9661
www.foldingtrailers.com

A DIVISION OF
FLEETWOOD Enterprises, Inc. • P.O. Box 7638 • Riverside, CA 92513-7638
www.fleetwood.com

If your local dealer is not indicated call toll-free,
24 hours: 1-800-444-4905 or write/e-mail to the address above.

We are doing our part to protect the environment by printing this brochure on recycled paper



Your Local Fleetwood Folding Trailer Dealer:

Coleman® and  are registered trademarks of The Coleman Company, Inc., used under license.

Photography and product information included in this brochure was accurate at the time of publication. Subsequent refinements may appear in the final product without incurring any obligation to incorporate such changes in any product previously manufactured. Specifications are subject to change without notice. Selected decorator items shown in the photography are not part of the product unless specified. All liquid capacities, weights, and dimensions are approximate.

©1998 Fleetwood Enterprises, Inc.

Litho in USA 7/98 • Edition 1