

*The 1996 Key West at
Joshua Tree National Monument*

1996



the Greatest Name in the Great Outdoors

CONTENTS

Grand Tour Series
Page 4

Features/Accessories
Page 8

Destiny Series
Page 12

Coleman   BY **FLEETWOOD**[®]
FOLDING TRAILERS

Coleman[®] and **Coleman** are registered trademarks of The Coleman Company, Inc., used under license.



Printed on RECYCLED PAPER

Coleman® Folding Trailers by Fleetwood® ... the Two Most Trusted Names in Outdoor Recreation



This brochure is printed on recycled paper so it can be used again. Like a lot of our customers, we believe it's time to do what we can to protect and preserve our environment. By using recycled paper we've saved approximately 973 trees, 400,410 gallons of water, 108 cubic yards of landfill space, and 234,520 kilowatt hours of electricity (enough to run 27-33 homes for one year). Plus, our Coleman Folding Trailer manufacturing facility maintains an average of 80% recycling of all internally generated waste. We hope that as you enjoy camping in the great outdoors, you will remember the camper's creed...

Take only pictures and leave only footprints.

Source: American Paper Institute. Numbers are estimated.



Over 27 years ago, the Coleman® Company introduced its first folding trailer based on the same tradition of quality known for its popular outdoor camping products. The Coleman name has come to symbolize "The Greatest Name In The Great Outdoors" with an unparalleled commitment to quality and customer satisfaction. The Fleetwood name has also established a reputation of being the world's largest recreational vehicle manufacturer, producing nearly one out of every three RVs on the road today. Over the past years, both the Coleman and Fleetwood names have steadily grown together in establishing a new level of product value and customer satisfaction.

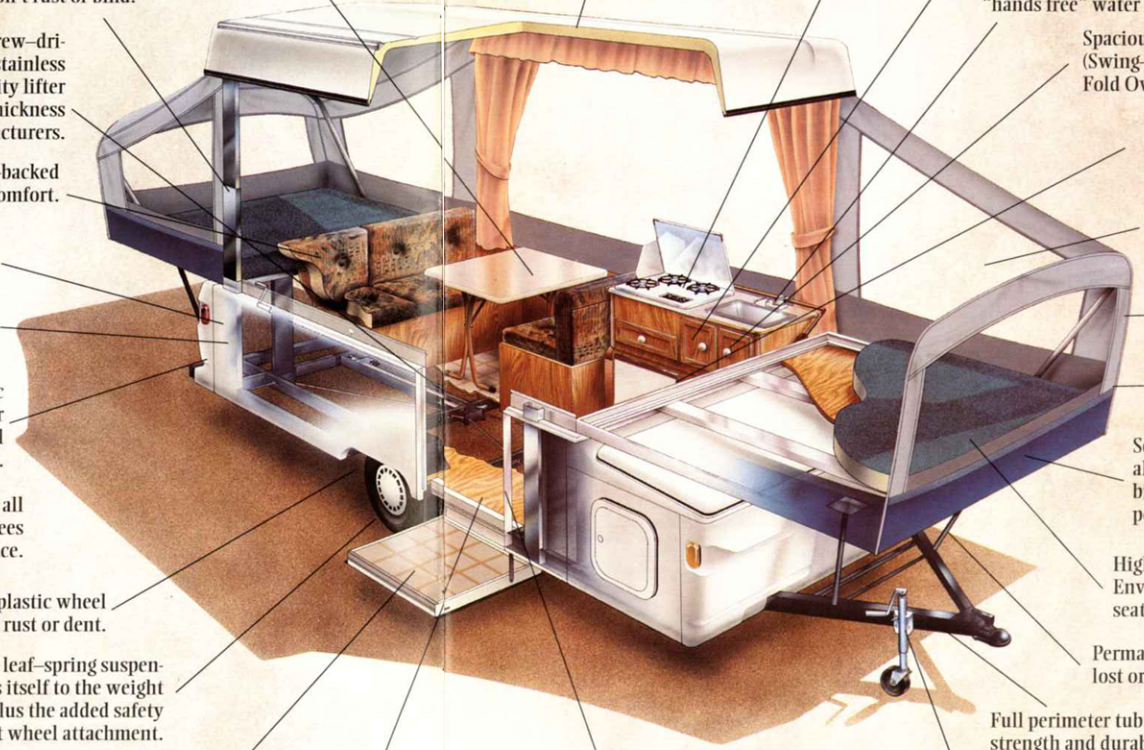
With the beginning of the 1996 model year, Coleman Folding Trailers by Fleetwood is introducing all new higher and wider designs and exclusive features, while maintaining lightweight models for smaller tow vehicles. Continuing the same level of customer commitment and design qualities, our new models will better meet the needs of today's camper. We're sure you'll agree after looking over the new floorplans, construction, and features, why Coleman Folding Trailers by Fleetwood are the two most trusted names in outdoor recreation.

Customer Satisfaction Always Comes First



"We Care!" Fleetwood's commitment to customer satisfaction is measured through our Circle of Excellence Customer Satisfaction Program, where each purchaser of a Coleman folding trailer is contacted after six months of ownership to insure that our product is providing a satisfactory service and meeting our customer's expectations.

- Lightweight, free-standing portable dinette table can be used anywhere.
- Heavy-gauge stainless steel lifter arms that won't rust or bind.
- Simple, dependable, screw-driven lifter system with stainless steel, aircraft quality lifter cables are twice the thickness of most other manufacturers.
- Four inch upholstered, wood-backed bench seats for lasting comfort.
- Krystal-Kote® finish side body panels resist scratching and marring.
- Automotive-style double sidewall construction.
- ABS impact resistant plastic front and rear body panels for protection from road gravel and debris.
- Underfloor water storage on all Grand Tour Series models frees up interior storage space.
- Seamless, polyethylene plastic wheel wells won't rust or dent.
- Exclusive, slipper leaf-spring suspension system adjusts itself to the weight of the trailer load, plus the added safety of 5 lug nut wheel attachment.
- Self-storing Stepper™ Door is extra wide, sturdy and safe. (Destiny Series offers slide-out self storing step).
- One-piece seamless O.S.B. Structurwood® flooring.



- One-piece, ABS, foam insulated seamless roof. (Except for Taos, Laredo and Sedona models).
- Exclusive two stove cooking convenience on Grand Tour Series, and single inside/outside portable stove on Destiny Series.
- Handsome wood cabinetry and decorator hardware.
- Water hold-down lever for "hands free" water flow.
- Spacious upper & lower galley storage space. (Swing-Level® galley in Grand Tour Series & Fold Over galley in Destiny Series).
- Exclusive, portable VersaCool™ food storage system with inside/outside access on Grand Tour Series.
- Clear vinyl windows for a brighter interior on overcast days, plus fine mesh screening to keep bugs out.
- Sunbrella® 302 fire resistant tenting material is highly breathable and will not mildew or dry rot.
- Angled wing-bed design allows cross ventilation air flow, even in a rainstorm.
- Seamless, one-piece beds have full perimeter aluminum frames for easy roll out without binding. (Grand Tour Series tested to 1,000 pounds and Destiny tested to 750 pounds).
- High density, environmentally safe Enviro-Cure® foam used on all bed and seat cushions.
- Permanently attached bed supports can't be lost or forgotten at home or the campground.
- Full perimeter tubular steel frame for greater strength and durability.
- Exclusive swing-up tongue dolly jack with permanently attached wheel.
- Exclusive, wide one-piece aluminum screen door with automatic spring return. (Grand Tour Series offers full view/ventilation screen door).



FLEETWOOD FOLDING TRAILERS

WARRANTY

The Industry's Best Buyer Protection Plan

LIFETIME LIMITED FOR BOTH PARTS AND LABOR*

The Industry's Only

EXCLUSIVE ONE-PIECE SEAMLESS ROOF
TUBULAR STEEL FRAME

ONE-PIECE SEAMLESS STRUCTURWOOD® FLOOR
STAINLESS STEEL LIFTER SYSTEM

ONE-PIECE STRUCTURWOOD® BED PLATFORM

5 YEAR LIMITED FOR BOTH PARTS AND LABOR*

EXCLUSIVE SUNBRELLA® 302
ACRYLIC TENTING MATERIAL
(Not available on Taos and Laredo models)

HASSLE FREE SERVICE

With Fleetwood, you don't have to call all over the country to have a problem corrected. Just contact your nearest Authorized Fleetwood Holding Trailer Dealer and he'll gladly take care of you.

And your Fleetwood Warranty includes all replacement parts and labor. *Add your Authorized Fleetwood Holding Trailer Dealer for complete details.

WE BACK OUR PRODUCT BETTER BECAUSE WE BUILD IT BETTER!

FLEETWOOD
FOLDING TRAILERS

Thanks, Coleman!

"I am so impressed with the toughness of this Coleman camper that I had to write and compliment you for building and selling such a fine product".
Joe Edwards, Albemarle, North Carolina

"Our Coleman trailer has been one of the most enjoyable investments we as a family have ever made. We have towed this camper over 10,000 miles and have never had a problem with it".
Bruno Bucci, Lincoln Park, Michigan

Grand Tour Series



For easy set up.



Convenient shower with plenty of hot water.



Watching the race from our Niagara!



Lots of room to relax in our new Niagara!

Whether you're an experienced camper or just beginning to enjoy the great outdoors, there's no better way to see this great country than in a 1996 Niagara.



Setup's as easy as 1...



...2...



...and 3!

Camp Tips

Prevent salt from lumping in your salt shaker by placing rice in the shaker. The rice will absorb the moisture and keep the salt dry.

Before heading out on your next camping trip, compile a list of the items you take and where they're stored, this will make preparing for a trip easier and faster...and don't forget to include the kids' list.



Plenty of room to set up at our favorite fishing hole.



Making memories in the new Sun Valley.



Easy storage of bulky gear.



VersaCool® rolls in & out...



...access even from outside!

The new Sun Valley provides a lot of value for great outdoor adventures.

Whether your preference is a private campground with luxurious amenities or an isolated clearing far from the beaten path, the new 1996 Yukon is just right for your needs.



The new Yukon makes a great base camp for our outdoor adventures.



Our Yukon has plenty of space and comfortable seating.

Grand Tour Series



Our galley is so easy to set up & use!



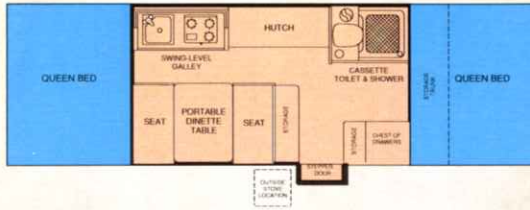
...with lots of food storage



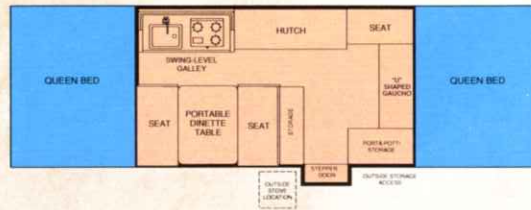
and converts easily for eating or sleeping

1996 Grand Tour Specifications

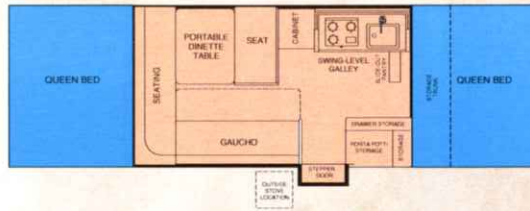
1996 Niagara®



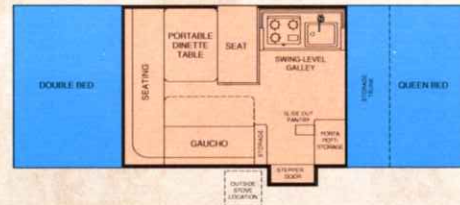
1996 Sun Valley®



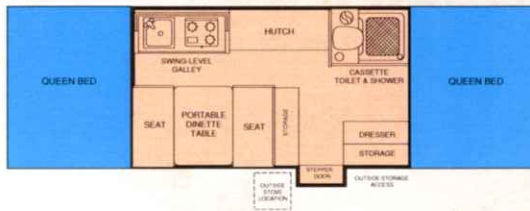
1996 Key West™



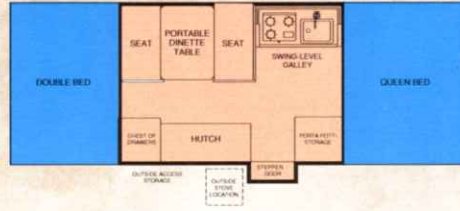
1996 Yukon™



1996 Shenandoah®



1996 Laramie®



Grand Tour Deluxe Features

- Swing-Level® galley
- Full-view, full ventilation screen door
- High pressure outside stove
- Low pressure inside stove
- Five-piece sectional Sunbrella® 302 tenting fabric
- Stepper™ door with crank & jack handle storage area
- VersaCool™ food storage system
- Waist level stainless steel posi-lock lift system (Niagara model features hydraulic lift system)
- Underfloor water storage
- Recessed lights
- Bed mattress aprons
- Outside access to inside storage
- 20 amp converter (except Niagara and Shenandoah models)
- Two double ceiling lights
- Built-in recessed ceiling clothes rack

	Niagara	KeyWest	Shenandoah	SunValley	Yukon	Laramie
ABS One-Piece Roof	Std.	Std.	Std.	Std.	Std.	Std.
Hydraulic Lift	Std.	N/A	N/A	N/A	N/A	N/A
EZ Crank Down Stabilizers	Std.	Opt.	Opt.	Opt.	Opt.	Opt.
Road Height	55"	55"	54"	54"	54"	54"
Length (Closed)	7'3"x19'	7'3"x19'	7'3"x17'	7'3"x17'	7'3"x17'	7'3"x15'
Length (Open)	25'9"	25'9"	25'9"	25'9"	21'11"	21'11"
Tire Size	B78-13ST	B78-13ST	20.5x8x10	20.5x8x10	20.5x8x10	20.5x8x10
Base Vehicle Weight, lbs.	2,289	2,129	2,000	1,839	1,771	1,639
Base Axle Weight, lbs.	2,089	1,947	1,800	1,692	1,655	1,475
Base Hitch Weight, lbs.	200	182	200	147	116	164
Electric Brakes	Std.	Std.	Std.	Opt.	Opt.	Opt.
Cargo Capacity, lbs.	511	671	500	661	729	861
Storage Trunk, cu. ft.	26	26	N/A	N/A	26	N/A
VersaCool® Capacity, qts.*	64	64	64	64	64	64
Water Storage, gal.	20(UF)	10(UF)	20(UF)	10(UF)	10(UF)	10(UF)
Sleeping Capacity	8	9	8	9	8	7
Living Area, sq. ft.	158	158	158	158	133	133
Interior Height	79"	79"	79"	79"	79"	79"
Shower/Cassette Toilet	Std.	N/A	Std.	N/A	N/A	N/A
Hot Water w/Mixer Faucet/ Demand Elec. Water Pump	Std.	Opt.	Std.	Opt.	Opt.	Opt.
Potti Storage Cabinet	N/A	Std.	N/A	Std.	Std.	Std.
Swing-Level® Galley	Std.	Std.	Std.	Std.	Std.	Std.
Hi-Pressure Outside Stove	Std.	Std.	Std.	Std.	Std.	Std.
Bed Size	79"x70"	79"x70"	79"x70"	79"x70"	79"x48"	79"x48"
Bed Size	79"x70"	79"x70"	79"x70"	79"x70"	79"x70"	79"x70"
Conv. Dinette Bed	39"x73"	39"x73"	39"x73"	36"x80"	39"x73"	39"x73"
Gauchos Bed Size	N/A	34"x72"	N/A	N/A	34"x72"	N/A
Dinette Table Size	28.5"x39"	28.5"x39"	26.75"x39"	26.75"x39"	28.5"x39"	28.5"x39"
Cabinet Storage, cu. ft.	75	75	49	55	69	43
Outside Storage Access	Std.	Std.	Std.	Std.	Std.	Std.

*When ordering factory installed refrigeration, the VersaCool® is omitted.

Grand Tour Optional Convenience Pack

- Spare tire
- ABS gas bottle cover
- ABS spare tire cover
- Two sets of privacy curtains

Exclusive Coleman® Features found on Coleman Folding Trailers by Fleetwood

① Full perimeter aluminum bed frames provide consistent, dependable roll-out and roll-in of the beds without warping or binding. Coleman® seamless one-piece beds are tested to 1,000 pound capacity (750 pounds on Taos, Laredo, & Sedona models).

② All Coleman folding trailers feature full perimeter tubular steel frames for strength, durability and reliability.

③ The exclusive Coleman® slipper leaf spring suspension adjusts itself automatically to the trailer load, providing smooth and safe handling.

④ This tongue dolly jack easily swivels down for unhitching and makes maneuvering your camper a snap! Swivel it back up and it automatically locks in place for towing.

⑤ More convenient and usable galley storage in both upper and lower galley compartments is standard in all models. The Grand Tour Series features the exclusive Swing-Level galley and the Destiny Series features a Fold-Over galley.

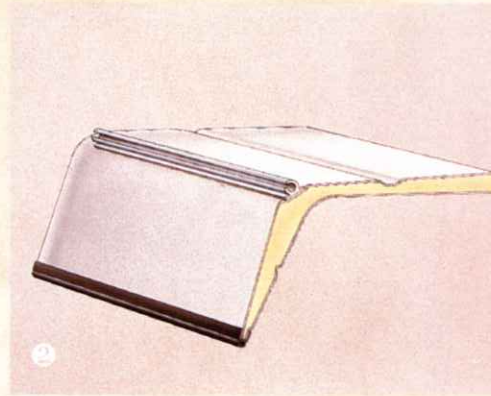


Additional Features Offered On Coleman® Folding Trailers

- Sectional Sunbrella® 302 tenting – breathable & durable
- Portable dinette table – for indoor & outdoor use
- Outside electrical outlet – for plug-in camping convenience
- Amber patio light – for night time recreation
- Hands-free water faucet – for quick & easy cleanups

- High density Enviro-Cure® cushion & bed foam – good for you & the environment
- Stainless steel posi-lock lift system – won't let you down
- Full perimeter aluminum bed frame – to prevent binding and warping
- Attached bed supports – won't be lost or left behind
- Front & rear ABS panels – impact resistant

- Krystal Kote® side panels – scratch resistant
- One-piece Structurwood® bed & floor material – for greater strength & durability
- 5 lug wheel attachment – for greater safety & reliability
- Bolted on stabilizer jacks – for easy replacement if damaged



❶ The exclusive, patented, all new one-piece Coleman ABS roof is guaranteed not to leak! It's color fast, impact resistant, and durable against all types of harsh weather, including damaging hail. (Not available on Taos, Laredo or Sedona models).

❷ The new, state-of-the-art, Coleman one-piece ABS roof is constructed of insulated foam sealed between two high impact resistant ABS panels. The all new design features a tapered peak that directs water to molded rain gutters that carry the water away from the entrance. This design is virtually indestructible and absolutely waterproof.

❸ Coleman Folding Trailer's heavy gauge stainless steel lift arms operate effortlessly with the dependable posi-lock lift system. The integral telescoping lifters are solidly bolted to the frame and are self-draining, so they don't require protective flaps.

❹ The exclusive Coleman one-piece aluminum screen door is easy to set in place and provides zip-lock bug proof seals and automatic spring return. The Grand Tour Series offers two removable panels allowing a full view screen and ventilation. The exclusive Coleman Stepper™ Door is positioned at just the right height for entry convenience and safety. (Grand Tour series only).

❺ The Coleman clear vinyl windows with fine mesh screening provide an unobstructed view of your surroundings and lets in the slightest breeze while keeping the smallest insects out. The durable and breathable Sunbrella® 302 tenting material is sewn with wick stop thread using a lock stitch which provides twice the strength of a single seam design and better water resistance.



Camp Tips

Pocket Stew: For each serving, place a hamburger patty in the center of a square of heavy duty aluminum foil. Add seasoning and cover with thinly sliced potatoes, onions, and carrots. Top with a slice of bacon. Fold the ends of the foil under until thick handles are formed. Lay on a bed of coals and turn as needed for 15 to 20 minutes. Split open the package and enjoy.

Coleman® Accessories

❶ The large 1.7 cu. ft. three-way refrigerator operates on LP gas, 120V, or 12V power sources.

❷ Privacy curtains featuring top netting to allow unobstructed cooling and heating air flow, and a portable bed light are the perfect accessories for late night reading when you don't want to disturb your guests or the kids.

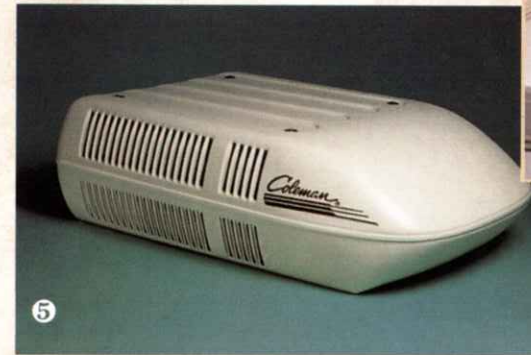
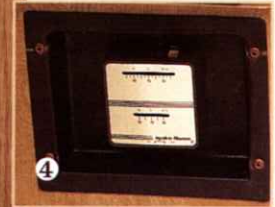
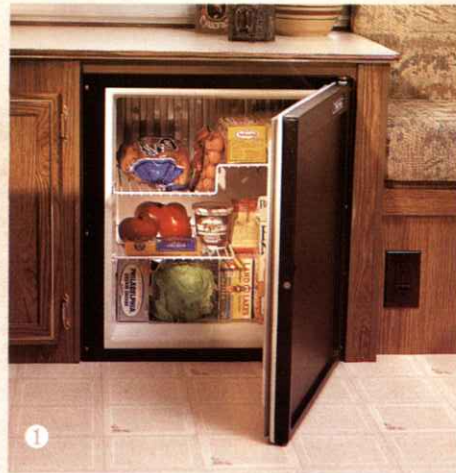
❸ This exterior bunk end hideaway cover provides additional protection and privacy for bikes and extra camping gear.

❹ Choose an energy efficient 16,000 BTU forced air furnace with thermostat control and electronic ignition for convenience and reliability.

❺ Keep cool with roof mounted air conditioning (see your dealer for proper sizing and cooling requirements).

❻ Expand your dinette seating and comfort with this handy hutch cushion in the Laramie Grand Tour series model.

❼ Pedestal table in the Sun Valley Grand Tour series model provides additional dining space.



Coleman® Accessories



1 Protect your LP bottles from road grime, while adding the finishing touch to the front of your camper with a vinyl or ABS cover (depending on trailer model).

2 Nearly double the useable size of your camper with this canopy and Add-A-Room combination. Coleman Add-A-Rooms also feature privacy panels (Canopy also available separately).

3 Add a little extra style to your Coleman folding trailer with these sporty wheel covers (not available for 12" wheels)

4 This wardrobe rack provides just the right amount of extra space for hanging clothes.

5 You'll appreciate the convenience of this rugged, self-storing entry step on your Destiny model (Grand Tour series features a Stepper® Door as standard equipment).

6 You can take it all with you in the easy to tow Coleman folding trailer equipped with a genuine Yakima® rack with either the optional canoe straps, bike carrier, cargo basket or other roof top accessories.

7 Covering the spare tire protects the tire from road grime and the damaging effects of the sun's UV rays. Choose from either a vinyl or ABS cover (depending on trailer model).





Our Bayport offers two queen beds & a gaucho for lots of sleeping space!



Camping made easy!

Combine the fun of camping in the new Bayport with the excitement of really getting to know the great outdoors. And do it at a price you can afford!



For sitting, sleeping or storage.



Room to store above & below.

Destiny Series

Camp Tips

Line pots and pans with aluminum foil to save on clean-up time.

Altitude can effect cooking time. Water boils at 212 degrees fahrenheit at sea level, but for every one thousand feet above sea level the boiling point of water drops two degrees. Because of lower boiling temperatures at higher altitudes, food takes longer to cook.



Enjoying some quiet time in our new Cheyenne!



Makes a comfortable bed.



Quality family time in our new Cheyenne.

When you're looking to have some great family fun, take a look at the all new Cheyenne. Cheyenne offers you an affordable way to build family memories.

*Wherever you go, or whatever your recreational pursuit,
the Sedona will surround your family in vacation com-
fort and convenience.*



Our Sedona is great fun for any season!



Comfort and convenience are part of the package.

Destiny Series



Room to store...

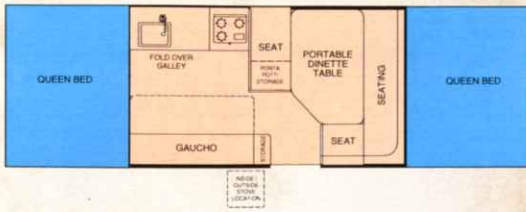


...even the bulkiest...

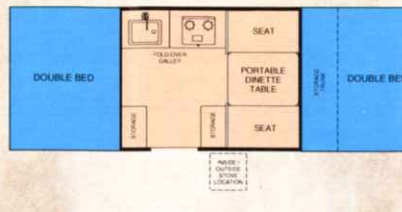


...of your vacation gear!

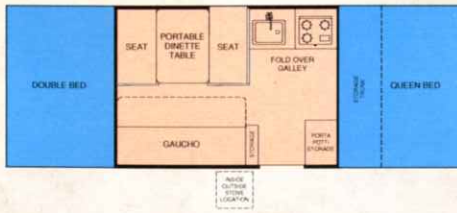
1996 Bayport™



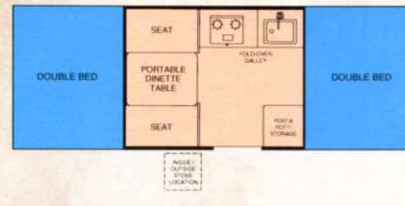
1996 Sedona®



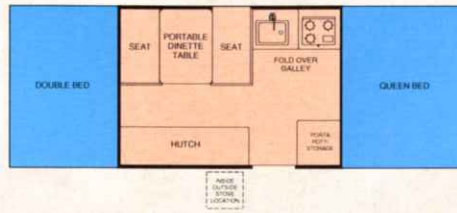
1996 Cheyenne™



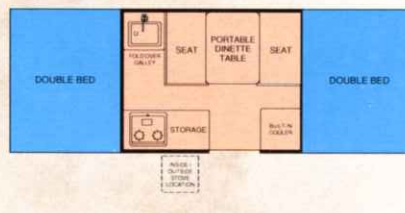
1996 Taos™



1996 Santa Fe™



1996 Laredo™



The Sedona, Taos and Laredo offer a lower and narrower towing profile suited for smaller vehicles.

Destiny Deluxe Features

- One-piece seamless ABS roof (except on Taos, Laredo & Sedona models)
- Wide, one-piece screen door
- 1,000 pound bed capacity (750 lbs. in Taos, Laredo & Sedona models)
- Sectional Sunbrella 302® tenting fabric
- Inside/outside stove
- Tubular steel frame
- Swivel tongue dolly jack
- Leaf spring suspension
- Full upper & lower galley storage
- Clear vinyl windows, fine mesh screening, and double lap fold seams with lock stitching
- Bolted on stabilizer jacks
- One-piece Structurwood® bed and floor material
- 5 lug wheel attachment
- Front & rear ABS panels
- Krystal Kote® side panels
- Permanently attached bed supports
- Full perimeter aluminum bed frame
- Stainless steel posi-lock lift system
- High density Enviro-Cure® cushion & bed foam
- Hands-free water faucet
- Portable dinette table
- Outside electrical outlet
- Amber patio light

1996 Destiny Specifications

	Bayport	Cheyenne	Santa Fe	Sedona	Taos	Laredo
ABS One-Piece Roof	Std.	Std.	Std.	N/A	N/A	N/A
EZ Crank Down Stabilizers	Opt.	Opt.	Opt.	N/A	N/A	N/A
Road Height	54"	54"	54"	47"	45"	45"
Length (Closed)	7'3"x16'9"	7'3"x16'9"	14'5"x17'	6'8"x14'2"	6'8"x11'5"	6'8"x11'5"
Length (Open)	25'9"	21'11"	21'11"	17'	17'	17'
Tire Size	5.30x12	5.30x12	5.30x12	5.30x12	5.70x8	5.70x8
Base Vehicle Weight, lbs.	1,778	1,617	1,500	1,255	995	945
Base Axle Weight, lbs.	1,605	1,527	1,365	1,175	870	870
Base Hitch Weight, lbs.	173	90	135	80	125	125
Electric Brakes	Opt.	Opt.	Opt.	Opt.	Opt.	Opt.
Cargo Capacity, lbs.	612	773	890	620	690	690
Storage Trunk, cu. ft.	N/A	26	N/A	17	N/A	N/A
Built-In Cooler, qts.	57	57	57	57	57	57
Water Storage, gal.	10	10	10	5	5	5
Sleeping Capacity	9	8	7	6	6	6
Living Area, sq. ft.	158	132	133	90	90	90
Interior Height	79"	79"	79"	79"	79"	79"
Hot Water w/Mixer Faucet/ Demand Elec. Water Pump	Opt.	Opt.	Opt.	N/A	N/A	N/A
Potti Storage Cabinet	Std.	Std.	Std.	N/A	Std.	N/A
Fold-Over Galley	Std.	Std.	Std.	Std.	Std.	Std.
Lo-Pressure Inside/ Outside Stove	Std.	Std.	Std.	Std.	Std.	Std.
Bed Size	79"x70"	79"x48"	79"x48"	48"x72"	48"x72"	48"x72"
Bed Size	79"x70"	79"x70"	79"x70"	48"x72"	48"x72"	48"x72"
Conv. Dinette Bed	41"x74"	41"x73"	41"x73"	40"x74"	40"x74"	40"x74"
Gauchó Bed Size	30"x70"	30"x70"	N/A	N/A	N/A	N/A
Dinette Table Size	30"x58.75"	30"x41"	30"x41"	30"x39"	30"x39"	30"x36"
Cabinet Storage, cu. ft.	58	67	43	49	29	28
Outside Storage Access	N/A	Std.	N/A	Std.	N/A	N/A

Destiny Optional Convenience Pack

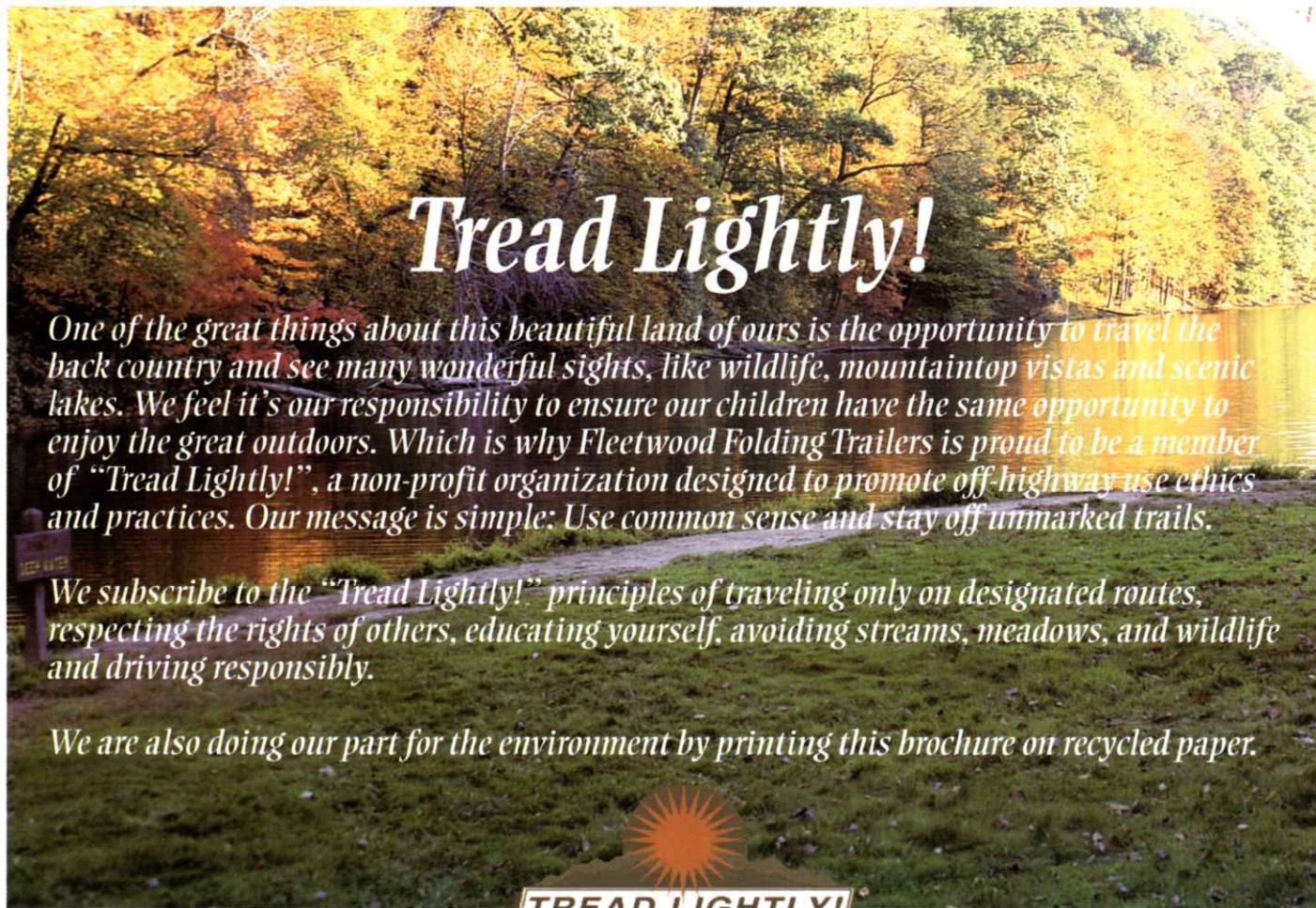
- Spare tire
- Vinyl spare tire cover
- Step
- Vinyl gas bottle cover
- Two sets of privacy curtains

Get Involved With Our Environment by Volunteering

Volunteers play a vital role in helping the U.S. Fish and Wildlife Service to fulfill its mission of conserving, protecting, and enhancing America's fish and wildlife and their habitats. The U.S. Fish and Wildlife Service offers a wide variety of tasks for volunteers to perform from conducting fish and wildlife population surveys, to leading tours and providing information to the visiting public.

For more information on how you can volunteer, write to the

U.S. Fish and Wildlife Service
Volunteer Coordinator
P.O. Box 25486
Denver Federal Center
Denver, Colorado 80225.



Tread Lightly!

One of the great things about this beautiful land of ours is the opportunity to travel the back country and see many wonderful sights, like wildlife, mountaintop vistas and scenic lakes. We feel it's our responsibility to ensure our children have the same opportunity to enjoy the great outdoors. Which is why Fleetwood Folding Trailers is proud to be a member of "Tread Lightly!", a non-profit organization designed to promote off-highway use ethics and practices. Our message is simple: Use common sense and stay off unmarked trails.

We subscribe to the "Tread Lightly!" principles of traveling only on designated routes, respecting the rights of others, educating yourself, avoiding streams, meadows, and wildlife and driving responsibly.

We are also doing our part for the environment by printing this brochure on recycled paper.

TREAD LIGHTLY!
ON PUBLIC AND PRIVATE LANDS

Your local Coleman Folding Trailer dealer is:

Coleman   **BY FLEETWOOD**
FOLDING TRAILERS

FOLDING TRAILER DIVISION
FLEETWOOD FOLDING TRAILERS, INC.
R.D. 2 • Somerset, PA 15501 • 814/445-9661
CORPORATE HEADQUARTERS
FLEETWOOD ENTERPRISES, INC.
P.O. Box 7638 • Riverside, CA 92513-7638

Coleman Feature & Benefit Video Tape
only \$9.95, write to: Fleetwood Video Offer,
P.O. Box 92919 Milwaukee, WI 53202-0919
or call toll-free:
1-800-444-4905

Product information and photography included in this brochure were as accurate as possible at the time of publication. Subsequent refinements may be evident in the final product. Prices and specifications are subject to change without notice. Selected decorator items shown in the photographs are not part of the product unless specified. All liquid capacities are approximate and dimensions are nominal.