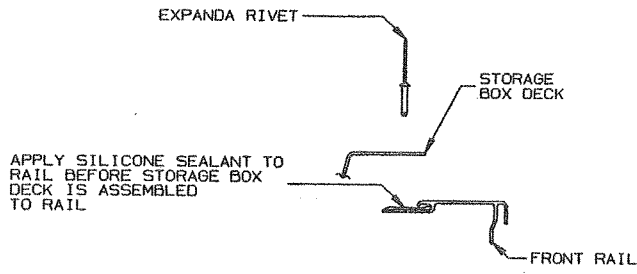
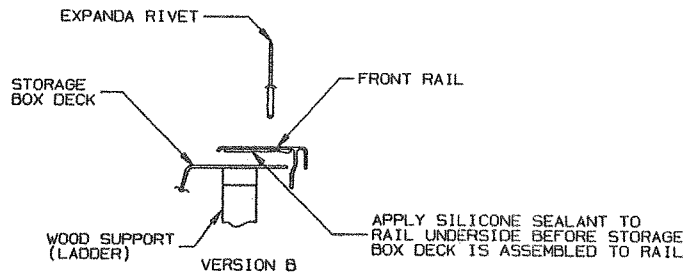


# 1996 GRAND TOUR STORAGE BOX SEALING PROCEDURES



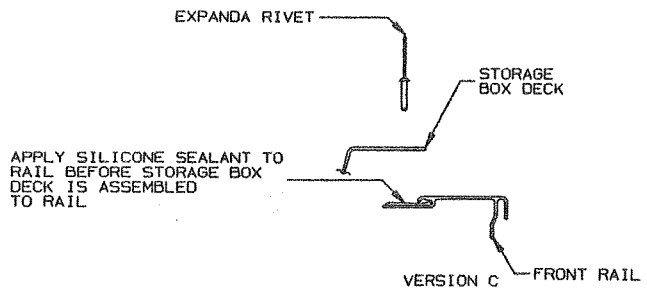
VERSION A

- ① ABS PLASTIC DECK FITS INTO FRONT BODY RAIL
- ② ALUMINUM STORAGE BOX SIDE PANEL HAS FLANGE WHICH GOES UNDERNEATH FRAME SIDE CHANNEL



VERSION B

- ① ABS PLASTIC DECK FITS BETWEEN FRONT BODY RAIL AND WOOD SUPPORT (LADDER)
- ② ALUMINUM STORAGE BOX SIDE PANEL HAS NO FLANGE AND IS SECURED BY RIVET



VERSION C

- ① ABS PLASTIC DECK FITS INTO FRONT BODY RAIL
- ② ALUMINUM STORAGE BOX SIDE PANEL HAS NO FLANGE AND IS SECURED BY RIVET

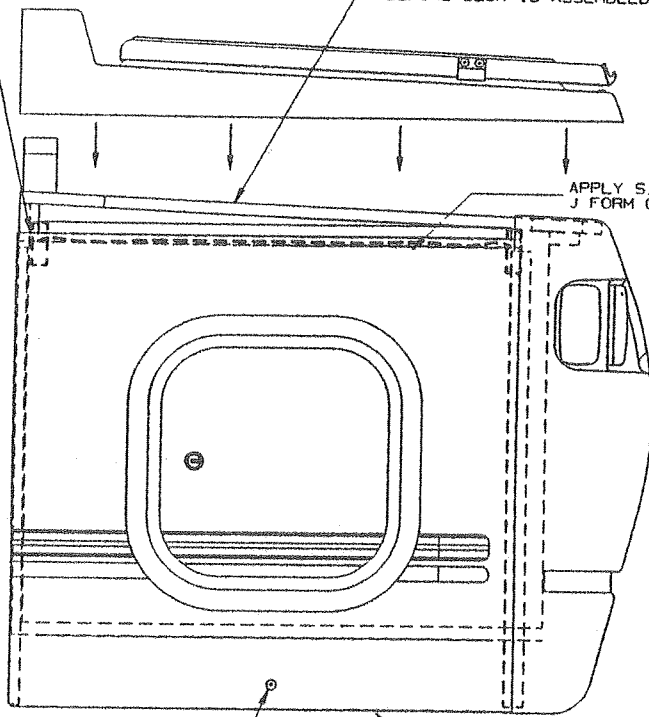
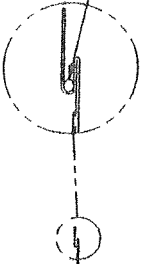
GRAND TOUR STORAGE BOX  
SEALING PROCEDURES DECK  
TO FRONT BODY RAIL

APPLY TACKY TAPE  
TO WOOD BOX SIDE  
UNDER AREA WHERE  
SIDE PANELS  
AND ABS PANELS MEET

PLY SILICONE SEALANT  
J FORM AS SHOWN

APPLY CONTINUOUS SILICONE BEAD  
ON SIDES & FRONT OF TOP BOX FRAME  
BEFORE DECK IS ASSEMBLED TO BOX

APPLY SILICONE SEALANT TO  
J FORM ON TOP OF PANEL



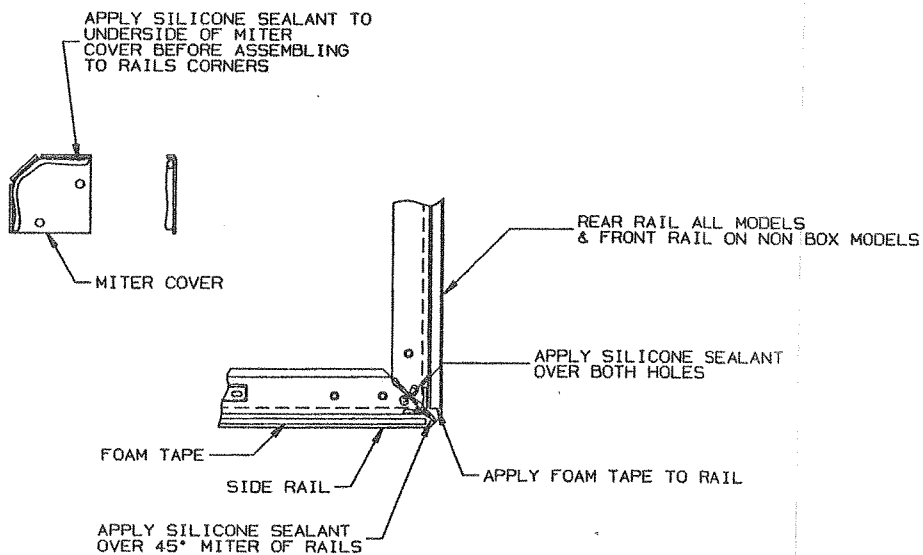
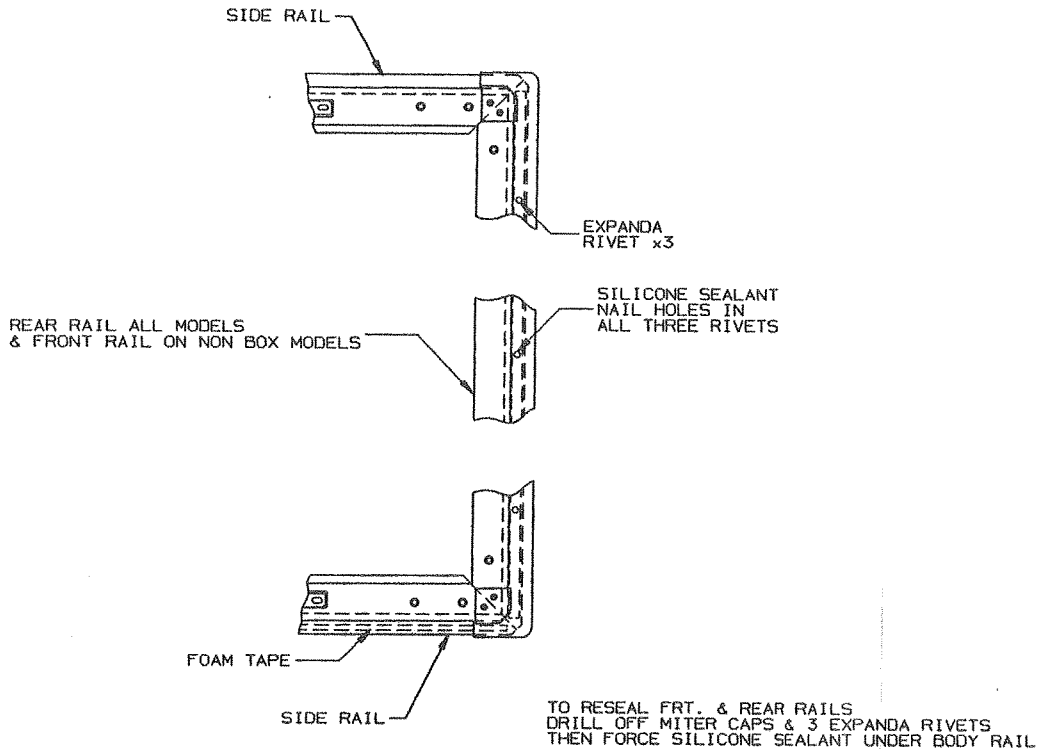
END VIEW OF  
STORAGE BOX  
SIDE PANEL

THIS RIVET USED ON  
VERSION "B" & "C"

VERSION "A" HAS FLANGE ON BODY PANEL AT THIS AREA  
VERSION "B" HAS NO FLANGE ON BODY PANEL AT THIS AREA  
VERSION "C" HAS NO FLANGE ON BODY PANEL AT THIS AREA

# SIDE VIEW OF STORAGE BOX

# 1996 GRAND TOUR BODY RAIL SEALING PROCEDURES



## GRAND TOUR FRONT & REAR RAIL SEALING