

Coleman 
Folding Trailers



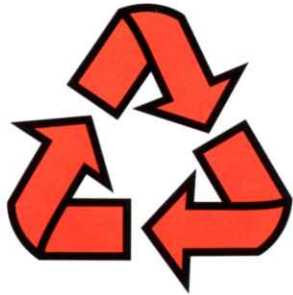
Printed On
Recycled Paper

Experience America's Best!

1993
BY **FLEETWOOD**®



Coleman and Fleetwood: A Heritage of Building High Quality Products with a Dedication to Total Customer Satisfaction.



This brochure is printed on recycled, coated paper so it can be reclaimed and used again. Like a lot of our customers, we believe it's time to do what we can to protect and preserve our environment. By using recycled paper we've saved approximately 1,216 trees, 500,500 gallons of water and 293,150 kilowatt hours of electricity (enough to run 33-36 homes for one year). We hope that as you enjoy the camping experience and our great outdoors heritage you will remember the camper's creed...

**"Take only pictures and
leave only footprints".**

When you're thinking about the purchase of a folding trailer, it pays to look at the company behind the product. Be sure the company you plan to buy from will be there for you, not just tomorrow...but years down the road. You can count on the fact that Fleetwood and Coleman will be here to support your purchase for years to come.

With a camping heritage that spans more than 90 years, and an ongoing commitment to innovative design and quality, Coleman quickly became known as the "best value" in the camping industry. Fleetwood accomplished its own industry benchmark when the company became the world's largest producer of manufactured homes and recreational vehicles.

Quality and customer satisfaction take time and must be earned every day. Coleman and Fleetwood have invested the time it takes to develop the industry knowledge and expertise that keeps our customers coming back...time and time again.

For Coleman, it all started quietly enough back in 1900 by a man named William Coffin Coleman. W.C., as most of his friends called him, started the company as a "one-man private utility". Back then the company was called the Hydro Carbon Light Company. The company rented lamps to stores,

lodge halls, churches and other public buildings, and eventually, to homes beyond the reach of electric service. Coleman grew with a basic, simple customer philosophy..."No Light - No Pay". The philosophy stuck, and even today we believe that no product is truly sold unless and until it's delivering a satisfactory service to its user.

During World War II, Coleman's creativity was rewarded with unprecedented sales for his famed G.I. Pocket Stove and special lanterns. After the war, the growth of outdoor recreation found Coleman ready with picnic jugs, portable heating appliances, tents, sleeping bags, backpacking gear, and folding trailers.

Meanwhile, following World War II, a dreamer and tinkerer named John C. Crean started his first business in

the garage of his small home in Southern California, by selling venetian blinds to trailer manufacturers. This business venture was the humble beginning for John's more direct involvement in the housing industry. Housing built in a factory was John's vision to make the "American Dream" of owning a home a reality for more Americans.

In 1950 John took a bold step and founded his own company. He named it Fleetwood. Putting his practical ideas into action, John opened his initial manufactured housing production facilities in Anaheim, California. From this modest beginning, the company steadily grew, becoming the largest producer of manufactured housing in the world today.

In 1964, John Crean expanded into the recreational vehicle business.

Fleetwood grew by leaps and bounds as recreational vehicles became a very popular and affordable way to vacation and enjoy the great outdoors.

Over the years, both Coleman and Fleetwood have grown steadily, establishing reputations built on providing customer value and satisfaction. Coleman has come to symbolize "the greatest name in the great outdoors" with an unparalleled commitment to outdoor recreation. The Fleetwood name is widely recognized for superior quality and value, and can be found on one out of every three RVs on the road today.

Now that Coleman and Fleetwood have joined forces, the combined commitment to quality and value continues to realize uniquely superior products with even greater customer satisfaction.



CIRCLE OF EXCELLENCE CUSTOMER SATISFACTION PROGRAM

We Care...

Fleetwood's commitment to customer satisfaction is evident through our Circle of Excellence Customer Satisfaction Program. Each and every purchaser of a Coleman folding trailer receives a personal phone call or a written survey after six months of ownership of their camper to insure that our product is continuing to provide a satisfactory service.

We Back 'Em Better Because We Build 'Em Better!

Quality construction is just as important as the exceptional comfort, convenience and eye appeal you'll find on every Coleman folding trailer. Coleman uses nothing but the finest grade materials inside and out. Just compare our straightforward product guarantee to that of any other manufacturer.

Coleman's Lifetime Limited Warranty guarantees the structural integrity of the lift system, floor, bed structure wood material and steel frame for lifetime to the original purchaser. In addition, the roof is covered by a five-year limited warranty and the Evolution[®]3 tenting material by a three-year limited warranty to the original purchaser.

(Limited lifetime frame warranty includes Americana, Pioneer and Cape Cod model trailers only).

① Coleman's patented fail-safe lift system operates easily every time because the integral telescoping lifters and main cables are made of heavy gauge stainless steel to prevent binding or rusting.

② Like the finest homes, Coleman folding trailers feature wood floors. Specially treated, waterproof, one-piece O.S.B. provides foot comfort, insulation and quality seamless construction. Coleman beds feature the same seamless one-piece quality construction.

③ For maximum protection from the elements, Coleman roof construction consists of an aluminum bonded insulated sandwich panel

with single seam design. **Coleman roofs are warranted for five full years for both parts and labor.**

④ Another added benefit for your camping comfort is that all Coleman trailers feature state-of-the-art Evolution 3 tent material. Evolution 3 won't mildew or dry rot. The fabric's unique breathability allows humidity and cooking odors to escape, while keeping rain out. Evolution 3 is extremely strong and durable enough to resist tears, rips and punctures. Evolution 3 is hypoallergenic and resists acid rain damage. Evolution 3 is to tenting what Gore[®] Tex[®] is to foul weather clothing.

⑤ Just as your home's sturdiness and integrity depend on a sound foundation, so a trailer's durability depends on its chassis. The frame for Americana, Pioneer and Cape Cod model trailers is warranted for the lifetime to the original purchaser. All Destiny model frames carry a five year limited warranty. Both warranties include parts and labor coverage.

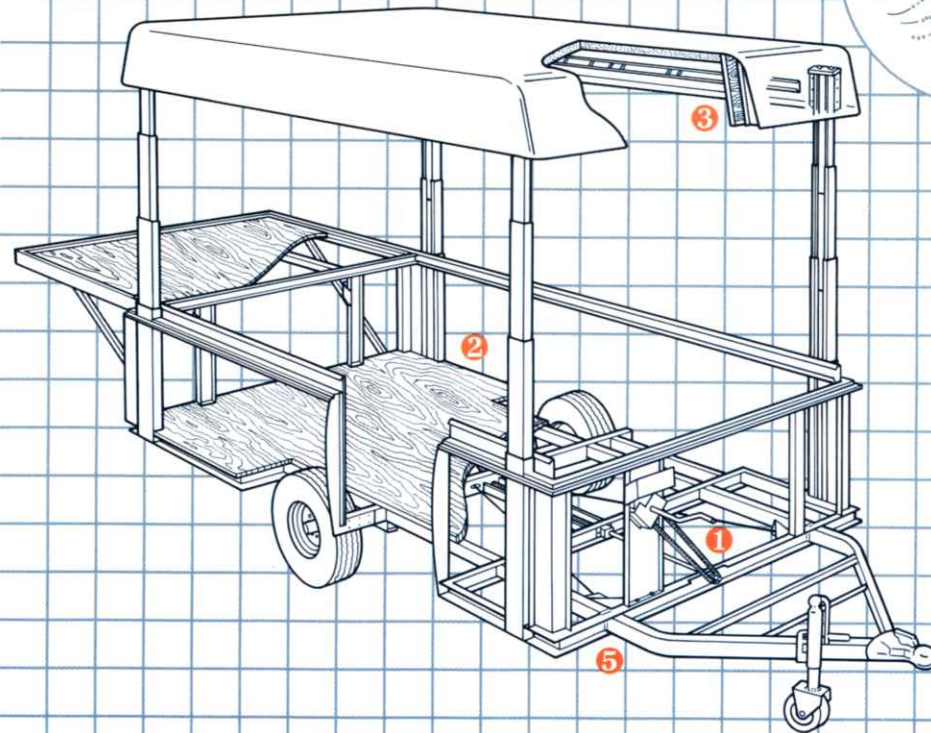
With Coleman backing you all the way, you can vacation with confidence and security. You're traveling with America's best folding trailer and the best folding trailer guarantee. Make this year's vacation exciting and memorable by choosing a traveling companion that won't let you down...a Coleman folding trailer by Fleetwood!

The Coleman Warranty: We've Got You Covered!

LIFETIME LIMITED WARRANTY

No other manufacturer builds uncompromising quality into their products like Coleman. And that's why Coleman can offer a **Lifetime Limited Warranty** on many major structural components. It's the best product guarantee in the industry. We back 'em better because we build 'em better. Ask your Coleman dealer for complete details.

(Warranty available to the original purchaser in the USA and Canada only.)



WILDERNESS WASTE

Nature will recycle
anything we leave
behind...but it takes an
incredibly long time:

Orange Peel
two weeks to six months

Ordinary Paper
six months to two years

Plastic Coated Paper
one to five years

Plastic Bags
ten to twenty years

Camera Film
twenty to thirty years

Nylon Fabric
(or Rope)
thirty to forty years

Old Boot Soles
fifty to eighty years

Aluminum Cans
(and Tabs)
eighty to 100 years!



Color coordinated mini blinds offer the convenience of instant privacy and allow you to regulate the light and view from Sequoia's spacious and deluxe interior.



AMERICANA The Best of the Best!

Whether you're moving up from a tent, or trading up from another brand, there's no better way to see this great country than with a Coleman folding trailer. It's truly America's best. And with the top-of-the-line Americana, you get everything you want in a folding trailer...the styling, the quality, the innovation and of course, the features. There's simply nothing else comparable.

❶ The 1993 Sequoia is easy to tow and rides smoothly behind the family vehicle ❷ The large Coleman Convertible Cooler can be used upright with slide-in food shelves, or on its back, chest-style



❶



❷

Americana Exclusive Features

- Aerodynamic Body Styling
- Deluxe Wheel Covers
- Underfloor Water Storage
- Lockable Utility Port
- Recessed Lights and Top Latches
- Molded Gas Bottle Shroud (optional)
- Outside Hot Water Shower (standard on Williamsburg, optional on Sequoia)
- Outside Access to Inside Storage
- Euro-style Designed Interior Decor
- Mini Blinds
- 3-Way Convertible Cooler

AT A GLANCE

WILLIAMSBURG

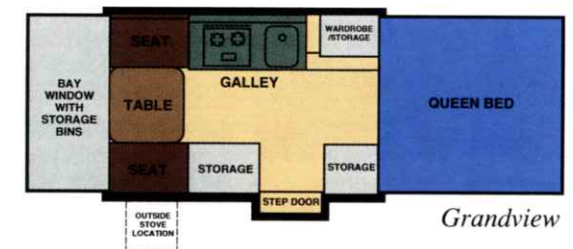
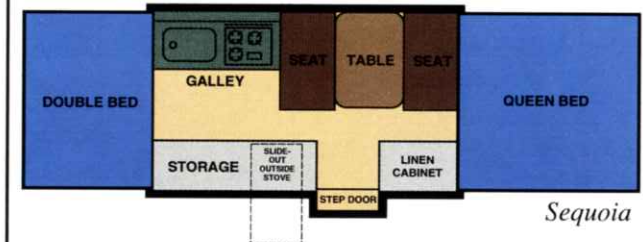
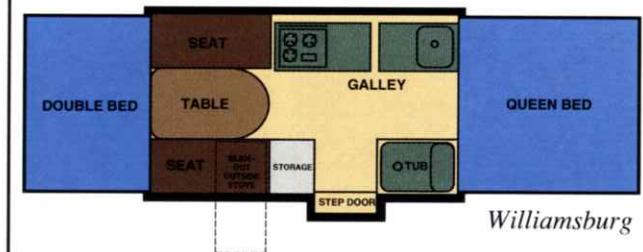
Road Height47"
Base Vehicle Weight1,715
Trailer Length (open)22'8"
Sleeps7

SEQUOIA

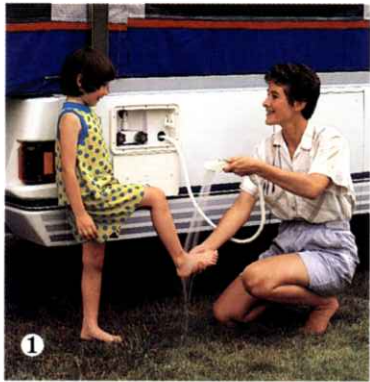
Road Height47"
Base Vehicle Weight1,560
Trailer Length (open)22'8"
Sleeps7

GRANDVIEW

Road Height47"
Base Vehicle Weight1,525
Trailer Length (open)19'2"
Sleeps4



A M E R I C A N A



1



2



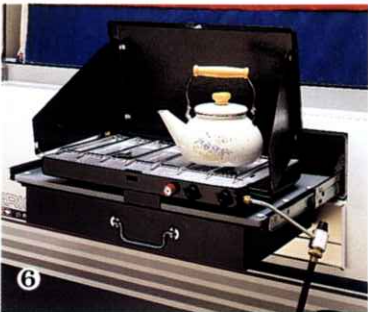
4



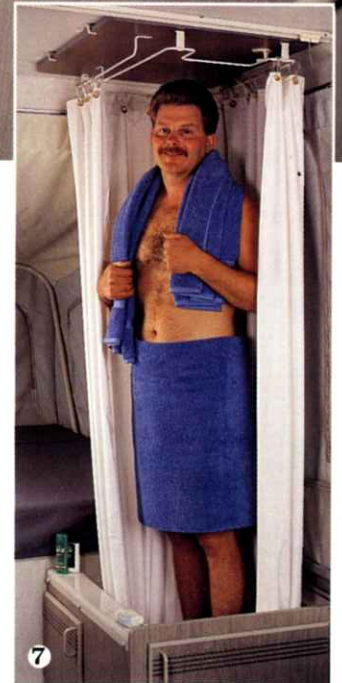
3



5



6



7

1 For hosing off the kids and pets, or just cleaning some fish, you can't beat this exterior shower for convenience 2 With Americana's Swing-Level® galley, you can pack things where they belong before you hit the road. Then once you arrive, just swing the galley into position. Everything stays just the way you stored it. 3 All Americana models feature large, convenient outside storage areas for your tools, lanterns or fishing gear 4 The 1993 Williamsburg interior with spacious, double Swing-Level galley 5 All storage and utility compartments lock for security 6 All Americas feature the added convenience of a high-pressure, high efficiency outside cookstove in addition to an inside low pressure stove 7 The Williamsburg model features hot water, tub and shower. When not in use, the shower top conceals the tub and doubles as a bedside nightstand.

CAPE COD

New For 1993 - The exciting Cape Cod is a brand new folding trailer that offers the comfort and feel of a travel trailer, with the economy and ease of towing of a folding trailer. This 23' folding hardwall model features solid panel walls made of maintenance-free and impact resistant ABS plastic. The sidewalls set up automatically as the trailer roof is being raised. Then, with a simple twist of the sidewall latch, the walls are locked and secured in place. Extra-large tempered and tinted safety glass sliding windows circulate fresh air and offer a panoramic view of your surroundings.

CAMPSITE TIPS

The following guidelines will help you make your campsite a pleasant, comfortable place to cook, eat, relax and sleep.

Setting Up

- Make sure the area will drain properly in case of rain.
- In windy conditions, choose a tree area to break the wind flow.
- In warm conditions, choose an open area to let breezes in.

Breaking Camp

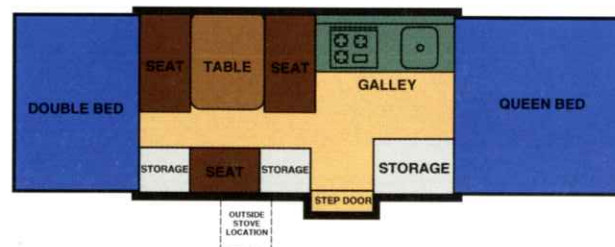
- Bury fire sites, return rocks and wood to proper location.
- Dispose of all trash properly.
- Return site to natural setting.



The new 1993 Cape Cod interior features Coleman's exclusive, patented Swing-Level® galley for maximum storage and ease of operation.

CAPE COD

Road Height57"
 Base Vehicle Weight1,751
 Trailer Length (open)22'10"
 Sleeps.....7



INSTANT TRACTION

Here's a simple trick. Put a few composition roof shingles in your vehicle for your next trip. If you get stuck, simply place the shingles under the tires with the rough side down...instant traction!

●
An average tree that lives for 50 years generates over \$30,000 worth of oxygen and is worth another \$60,000 in air pollution control!



Any occasion can be a celebration in the spacious and stylish Chesapeake interior. Plenty of table space and comfortable seating allows room for all to take part in the fun.



1



3



2

1 The 1993 Arcadia interior 2 The 1993 Arcadia provides a colorful backdrop and a comfortable retreat for a great outdoor family adventure 3 The ultimate in Pioneer creature comfort is the Arcadia with hot water, bathtub and shower. When not in use, the shower top converts the tub into a handy bedside nightstand.

PIONEER

Great Family Value with the Spirit of Adventure!

Wherever you go, or whatever your recreational pursuit, any one of the great new Pioneer models will surround your family in vacation comfort and convenience. You'll love the uncompromising value in the 1993 Pioneer series.

Product information and photography included in this brochure were as accurate as possible at the time of publication. Subsequent refinements may be evident in the final product. Prices and specifications are subject to change without notice. Selected decorator items shown in the photographs are not part of the product unless specified. All liquid capacities are approximate and dimensions are nominal.



1



2



3



4

1 Mealtime anytime is made so much easier with a well-stocked galley. And with the Pioneer Swing-Level® galley, you've got the room to bring it all with you 2 Coleman's exclusive and patented Swing-Level galley is a snap to set up and use 3 This handy mesh pocket is great storage for sunglasses, a flashlight, wallet, maps or other items 4 The 1993 Arcadia on the road to adventure

AT A GLANCE

<p style="text-align: right;"><i>Arcadia</i></p>	<p>ARCADIA</p> <p>Road Height47"</p> <p>Base Vehicle Weight1,490</p> <p>Trailer Length (open)22'8"</p> <p>Sleeps7</p>
<p style="text-align: right;"><i>Seneca</i></p>	
<p style="text-align: right;"><i>Chesapeake</i></p>	
<p style="text-align: right;"><i>Newport</i></p>	
<p style="text-align: right;"><i>Sedona</i></p>	
<p>CHESAPEAKE</p> <p>Road Height47"</p> <p>Base Vehicle Weight1,445</p> <p>Trailer Length (open)22'8"</p> <p>Sleeps7</p>	
	<p>NEWPORT</p> <p>Road Height47"</p> <p>Base Vehicle Weight1,220</p> <p>Trailer Length (open)19'</p> <p>Sleeps6</p>
	<p>SEDONA</p> <p>Road Height45"</p> <p>Base Vehicle Weight995</p> <p>Trailer Length (open)17'</p> <p>Sleeps5</p>

Meeting the Challenges of Outdoor Adventure!

The revolutionary new Evergreen is the first folding camping trailer that is ideally designed for mobility impaired campers, as well as for anyone who desires open interior space. The Evergreen is a Pioneer series trailer that provides campers with unique new features.

① Evergreen's interior is large and spacious, allowing plenty of room for easy maneuvering ② The 1993 Evergreen shares the Pioneer series contemporary graphic styling ③ A sturdy slide-out step is standard for entry convenience. The optional platform and ramp is available for the wheelchair bound camper



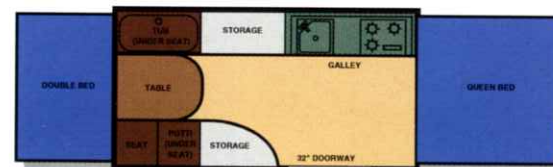
①



③



②

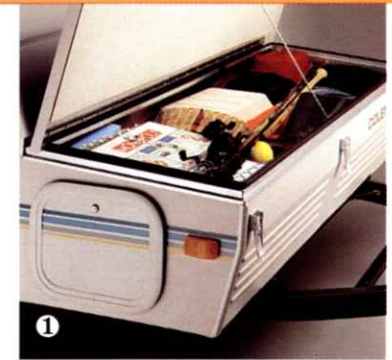


Evergreen

EVERGREEN

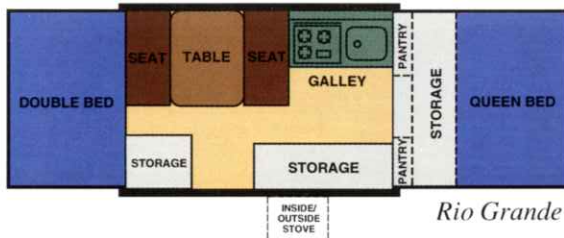
Road Height	47"
Base Vehicle Weight	1524
Trailer Length (open)	22'8"
Sleeps	7

D E S I G N I N G



RIO GRANDE

Road Height47"
 Base Vehicle Weight1,460
 Trailer Length (open).....21'
 Sleeps.....7



Rio Grande

- 1 Rio Grande's innovative and large 17 cu. ft. storage trunk opens wide when the bed is retracted
- 2 When the bed is extended, access is through hatches on either side of the trailer... 3 ...or through a sliding door on the interior of the camper 4 Two large sliding pantries on either side of the storage access door are perfect for stowing jars and canned goods.

RIO GRANDE



1

DESTINY

Affordable Camping Fun!

1 The 1993 Cedar interior features rear dinette seating and two double beds on each side of the trailer 2 The Destiny portable inside/outside stove 3 The 1993 Cedar weighs under 1,000 pounds and offers economical and easy towing

When you're looking for a folding trailer that won't put a big dent in your wallet, take a look at the Destiny Series. Dollar for dollar, no other camper offers you such a great list of standard features at such an affordable price.



3

AT A GLANCE

ROYALE

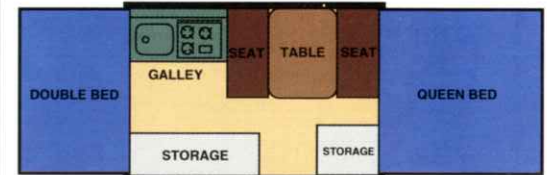
Road Height47"
 Base Vehicle Weight1,225
 Trailer Length (open)21'
 Sleeps7

CEDAR

Road Height45"
 Base Vehicle Weight995
 Trailer Length (open)17'
 Sleeps6

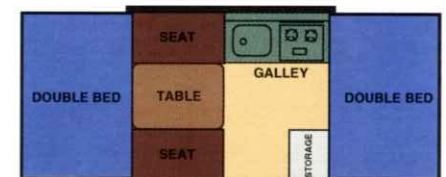
ROANOKE

Road Height45"
 Base Vehicle Weight995
 Trailer Length (open)17'
 Sleeps6



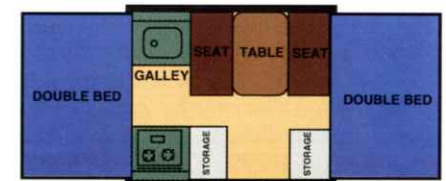
Royale

INSIDE/
OUTSIDE
STOVE



Cedar

INSIDE/
OUTSIDE
STOVE



Roanoke

INSIDE/
OUTSIDE
STOVE

STANDARD FEATURES



1



4



6



8



3



5



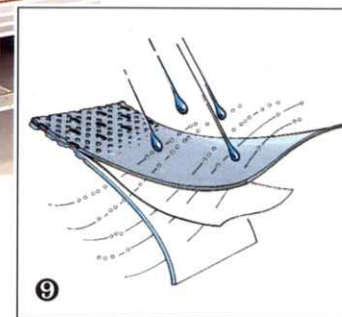
7



2



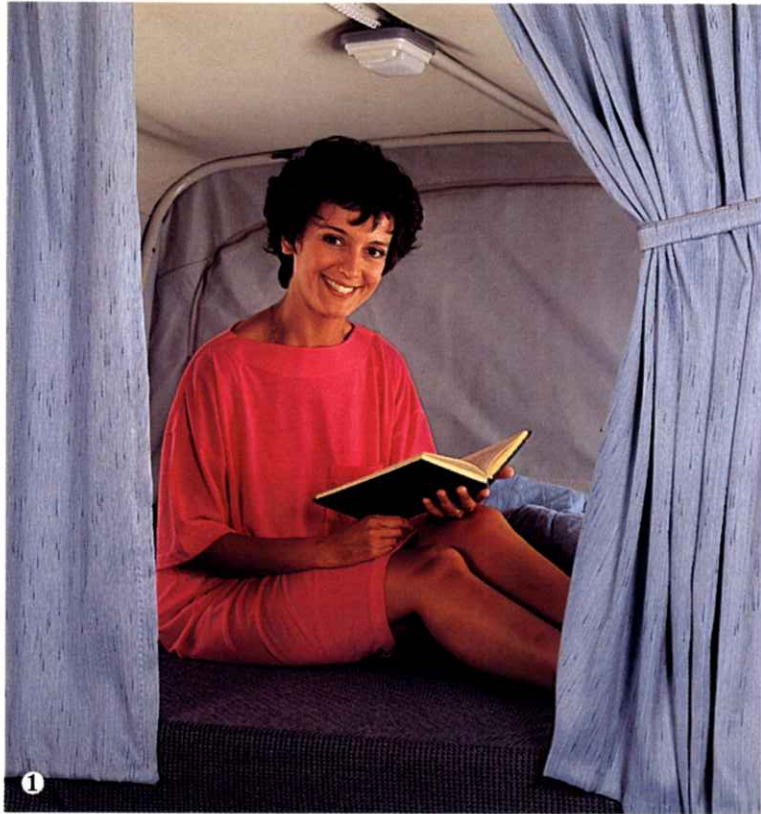
3



9

1 All Coleman tables provide spacious dinette seating with the added benefit of total portability for use indoors or out (except Evergreen) 2 All models offer storage space to conveniently store a Port-A-Potti® 3 Coleman's exclusive, patented Stepper™ Door is lighted for nighttime safety and positioned at just the right height for entry convenience 4 Coleman ice chests come in three big sizes, depending on the model you choose, and they're portable...so you don't lose valuable interior cabinet storage space, as with built-in ice chests (when ordering factory installed refrigeration the ice chest is omitted) 5 All Coleman folding trailers offer an incredible amount of headroom above the beds for your personal comfort 6 For hands-free washing, this ingenious pump hold-down lever does the trick 7 Coleman's one-piece design, all-aluminum screened entry door features lightweight, easy set-up. Plus, a zip-lock bug proof seal and automatic spring-tension return just like your screen door at home 8 This tongue dolly jack easily swivels down for unhitching, and makes maneuvering your camper a snap! Swivel it back up and it automatically locks in place for towing 9 Evolution®3 tenting material won't mildew or rot, is fully water resistant and easy to maintain, and carries an exclusive limited 3-year warranty

ACCESSORIES



① A set of privacy curtains and a portable bed light are the perfect accessories for late night reading when you don't want to disturb your guests or the kids ② Rear mount bike carrier ③ Keep cool with roof mounted air conditioning (see your dealer for proper sizing and cooling requirements) ④ On Pioneer models, covering the spare tire protects the tire from road grime and the damaging effects of the sun's UV rays ⑤ This 1.5 cu. ft. Dometic® three-way refrigerator operates on LP gas, 120V or 12V power supplies

POCKET STEW

For each serving, place a hamburger patty in the center of a square of heavy-duty aluminum foil. Add seasoning and cover with thinly sliced potatoes, onions, carrots and peas. Top with a slice of bacon. Fold the ends of the foil under until thickened handles are formed. Lay on a bed of coals and turn as needed for 15 to 20 minutes. Slit open the package and enjoy.



A square knot is a good knot to use when connecting two pieces of rope of the same size. It's also the easiest to untie.

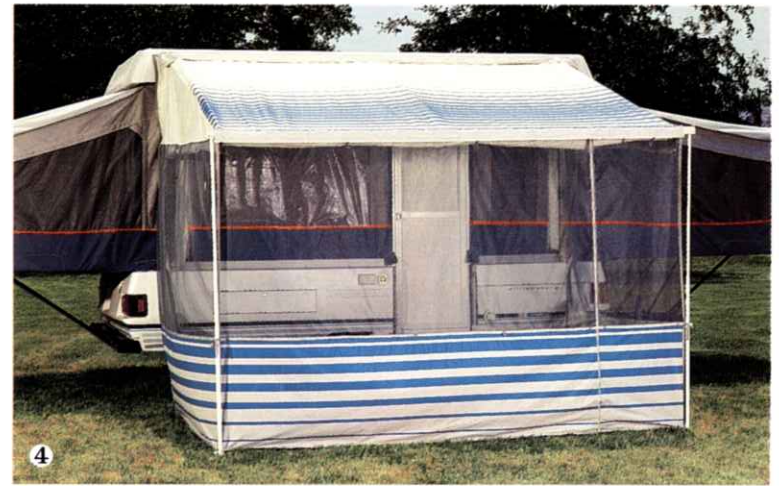


CAMP TIPS

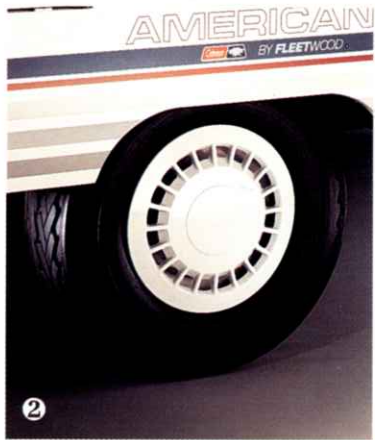
Keep bugs away from your camp table by pouring a puddle of pancake syrup (or thick sugar water) 10 to 15 feet away from your camper. The pests will leave your food for the sticky mess.

Dip wooden matches in nail polish or paraffin to keep them dry.

Vegetables wrapped in aluminum foil with two tablespoons of water will cook in about 15 minutes over hot coals.



1 This attractive storage bumper is a great place to stow fishing rods, canopy poles, etc. 2 The large Coleman Convertible Cooler can be used upright with slide-in food storage shelves, or pull out the shelves and use it chest-style (standard on all Americana models) 3 When it comes to cargo racks and roof top accessories, people trust the Yakima® brand 4 Nearly double the size of your camper with this canopy and screen room combination. Coleman screen rooms also feature privacy panels 5 Protect your LP bottles from road grime, while adding the finishing touch to the front of your camper with a vinyl or ABS cover (depending on trailer model)



1 You'll appreciate the convenience of this rugged, self-storing entry step on your Destiny model (Pioneer and Americana models feature a Stepper® door as standard equipment) **2** Add a little extra style to your Destiny or Pioneer camper with these sporty wheel covers (not available for Royale model) **3** Have the convenience of 12V power with this battery mount kit (battery not included) **4** This handy CamperCaddie™ makes trip preparation a snap. Pack it like a suitcase. Roll it up and pop it in the camper or your trunk. When you set up camp, simply unroll it and hang it right up **5** Looking for a little extra space to hang some clothes? This wardrobe rack is just the ticket **6** Choose an energy efficient 12,000 or 20,000 BTU forced air furnace with thermostat control and electronic ignition for convenience and reliability

FISHING TIPS

To have the best luck with fishing, kids and adults of all ages need to understand something about the habits and food preferences of the different species they're trying to catch. These pointers should help get you started!

Bluegills and Sunfish - like to feed on or near the surface, especially in the early morning and early evening hours. Midday, you'll find them around weed beds and near dropoffs.

Yellow Perch - travel in schools near the bottom. You can locate a school of Perch by trolling or casting, and once you find them you will have fast fishing. Their preferred food is small Bluefish.

Crappies - like to lurk near protective cover in 6 to 10 feet of water. Find a submerged tree or brush pile or underwater weed bed and you'll find Crappies. Like Perch, they prey on minnows and other bait fish.

Bullheads - are bottom feeders that use their sense of smell to locate food. They are rarely caught on artificial lures of flies, but will pick up almost anything organic they find lying on the bottom.

Water Hold-down Lever – allows "hands free" constant flow of water to make mealtime preparation and clean up a snap

Wood Cabinetry and Decorator Hardware – attractive, yet rugged and easy to maintain

Headroom – a full 36" of headroom means you can sit upright in bed without hitting your head

Maximum Storage Galley – more convenient and usable storage area than in any competitive product

Bed Heights – bed height is convenient and ideal for extra seating with high density foam for maximum comfort & support

Front & Rear Centrex® Capped ABS Plastic Panels – protection from stones and road gravel

Krystal-Kote® Finish Side Body Panels – resists marring and scratching

Superior Side Wall Construction – aircraft/automotive-type double wall construction for durability, strength and light weight

Subfloor Construction – specially treated waterproof one-piece O.S.B. wood flooring, carries a Limited Lifetime Warranty

Wheel Wells – seamless, rust and dent-proof

Underfloor Water Storage Tank – allows for more interior storage space (Americana models only)

Stepperlite™ – provides illumination at the doorstep entrance for night time safety (Americana, Pioneer and Cape Cod only. Not available on Evergreen)

Self-storing Stepper™ Door – a safe, wide and sturdy step, positioned low enough for children, a Coleman exclusive feature! (Americana, Pioneer, and Cape Cod only. Not available on Evergreen)

Lifter Cable – 1/8" diameter stainless steel aircraft cable; double the thickness of most competitors

Lifter Arm – heavy-gauge stainless steel lift arm that won't rust or bind. Lift system carries a Lifetime Limited Warranty.

Undercarriage Perimeter – rugged quality of aircraft riveted and screw construction

Clear Vinyl Windows – allows more light inside to brighten the living area, especially important on overcast days

Roof Construction – insulated sandwich panel, single seam design for the ultimate protection from the elements, Limited 5-year Warranty

Dinette Construction – 4" thick upholstered, wood-backed bench seating for long-lasting durability and comfort

Lightweight Portable Dinette Table – Free-standing so it can be used anywhere

Evolution® 3 Tenting Material – state of the art fabric, won't mildew or rot, fully water resistant and easy to maintain, carries an exclusive Limited 3-year Warranty

Angled Wing Bed Design – combined with fine mesh screening allows you to keep the privacy end flaps open for cross ventilation, even in a rain storm

Full Perimeter Aluminum Bed Frames – provide consistent, dependable roll-out and roll-in of the beds without warping or binding. Coleman seamless one-piece beds are tested to 1,000 pounds capacity

Permanently Attached Bed Supports – so they can't be lost or left behind at home or at the campsite

Full Perimeter Tubular Steel Chassis – for strength, durability and reliability (Americana and Pioneer models only.)

Construction

No One Builds 'em Like Coleman...
We Back Our Trailers Better Because
We Build Them Better!

Why do you see more Coleman folding trailers on the road than any other brand? Style, innovative design and enduring value have a lot to do with it. But perhaps the greatest reason of all is because the Coleman model you're considering has been built to last!

No other manufacturer builds quality into their product like Coleman. And that's why Coleman can offer a Lifetime Limited Warranty on many major structural components. We feel it's the best product guarantee in the industry. Ask your dealer to give you all the details*.



*Warranty available to the original purchaser in the USA and Canada only.

Lifetime Limited Warranty

Coleman trailers carry a Lifetime Limited Warranty on major structural components. See your authorized Coleman dealer for complete details.

Evolution® 3: The State-of-the-Art Tenting Material With Exclusive 3-Year Limited Warranty

No Rot or Mildew – Evolution 3 fabric will not mildew or rot, even if you pack your camper away when it's wet. **Odors Don't Linger** – even with the windows and doors tightly shut, Evolution 3 fabric's unique breathability allows cooking and storage odors to escape. **Safety Comes First** – Evolution 3 fabric for folding trailers meets all of the Federal Government's stringent FMVSS 302 (Federal Motor Vehicle Safety Standards) requirements for flame retardance. **Strong Without Shrinkage** – with three layers bonded together, Evolution 3 fabric is extremely strong and durable. It's tough enough to stand up to tears, rips and punctures. **Hypoallergenic** – Evolution 3 fabric is different from natural fiber tenting that may cause a discomfort to some individuals with allergies to natural fibers.

1993 COLEMAN FOLDING TRAILERS

Williamsburg® Sequoia® Grandview® Cape Cod™ Evergreen™ Arcadia® Seneca® Chesapeake® Newport® Sedona® Rio Grande® Royale® Cedar® Roanoke®

CONSTRUCTION	Williamsburg®	Sequoia®	Grandview®	Cape Cod™	Evergreen™	Arcadia®	Seneca®	Chesapeake®	Newport®	Sedona®	Rio Grande®	Royale®	Cedar®	Roanoke®
Built-in spare tire mount	S	S	S	S	S	S	S	S	S	S	S	S	S	S
High impact ABS front & rear panels	S	S	S	S	S	S	S	S	S	S	S	S	S	S
Bumper	S	O	O	S	O	O	O	O	O	O	S	S	S	S
Evolution® 3 tenting	S	S	S	S	S	S	S	S	S	S	S	S	S	S
TOWING														
Road height (inches)	47	47	47	57	47	47	47	47	47	45	47	47	45	45
Base vehicle weight*	1,715	1,560	1,525	1,751	1,524	1,490	1,430	1,445	1,220	995	1,460	1,225	995	995
Base hitch weight	130	145	125	173	138	145	145	125	110	145	90	125	125	125
Base axle weight**	1,585	1,415	1,400	1,578	1,386	1,345	1,285	1,320	1,100	850	1,370	1,110	870	870
Trailer size (closed)	68"x15'6"	68"x15'3"	68"x13'8"	68"x15'	68"x14'10"	68"x14'10"	68"x14'10"	68"x14'10"	68"x12'10"	68"x11'7"	68"x16'4"	68"x13'5"	68"x11'5"	68"x11'5"
Electric brakes	S	O	O	O	O	O	O	O	O	O	O	O	O	O
Tire size	20.5x8x10	20.5x8x10	20.5x8x10	26.5x8x10	20.5x8x10	20.5x8x10	20.5x8x10	20.5x8x10	20.5x8x10	5.70x8	20.5x8x10	5.30x12	5.70x8	5.70x8
Hub caps	S	S	S	O	O	O	O	O	O	O	O	-	O	O
LIVING														
Sleeping capacity	7	7	4	7	7	7	8	7	6	5	7	7	6	6
Trailer length (open)	22'8"	22'8"	19'2"	22'10"	22'8"	22'8"	22'8"	22'8"	19'	17'	21'	21'	17'	17'
Living area (square feet)	129	129	106	129	129	129	129	129	104	88	114	114	90	90
Interior height (open)	67"	67"	67"	71"	67"	67"	67"	67"	67"	67"	62"	67"	67"	67"
Overhead dome lights	4	4	4	4	2	2	2	2	2	2	2	2	2	2
Ice box/cooler (quarts)	68	68	68	68	48	48	48	48	48	48	48	48	40	40
Tub/Shower/Hot Water Heater	S	-	-	-	S	S	-	-	-	-	-	-	-	-
Hot water with mixer faucet	S	O	-	-	S	S	-	-	-	-	-	-	-	-
Demand electric water pump	S	O	-	-	S	S	-	-	-	-	-	-	-	-
Potti	S	O	O	O	S	O	O	O	O	O	O	O	O	O
Potti storage cabinet	S	S	S	S	S	S	S	S	S	S	S	S	S	S
Galley/Swing-Level® or Fold Over	SL	SL	SL	SL	FO	SL	SL	SL	SL	SL	FO	FO	FO	FO
Porcelain range w/# burners	3	3	2	3	3	3	3	3	2	2	3	3	2	2
Hi-pressure outside stove w/drawer	S	S	S	-	-	-	-	-	-	-	-	-	-	-
Hi-pressure outside stove w/shelf	-	-	-	S	S	S	S	S	S	S	-	-	-	-
Lo-pressure inside/outside stove	-	-	-	-	-	-	-	-	-	-	S	S	S	S
Mattress size (inches)	74x72 51x72	74x72 51x72	74x72 -	74x72 51x72	74x72 51x72	74x72 51x72	74x72 51x72	74x72 51x72	51x72 29x72	57x72 29x72	72x72 48x72	72x72 48x72	48x72 48x72	48x72 48x72
Convertible dinette bed size (inches)	49x73	40x73	40x73	40x70	40x73	39x70	18x67/40x70	40x73	39x59	40x73	36x65	36x65	40x73	36x59
Mattress thickness (inches)	4	4	4	4	4	4	4	4	3	3	3	3	3	3
Dinette table size (inches)	30x48	30x39	30x39	30x39	30x39	30x39	18x30/30x39	30x39	23.5x39.5	30x39	30x36	30x36	30x39	30x36
25 ft. 12-volt auto. extension cord	S	O	O	O	O	O	O	O	O	O	O	O	O	O
STORAGE														
Built-in water tank	UF (20 gal.)	UF (10 gal.)	UF (10 gal.)	10 gal.	UF (20 gal.)	10 gal.	-	-	-	-	-	-	-	-
Portable water tank	-	-	-	-	-	-	10 gal.	10 gal.	10 gal.	10 gal.	5 gal.	5 gal.	5 gal.	5 gal.
Outside ground fault receptacle	S	S	S	S	S	S	S	S	S	S	-	-	-	-
Cabinet storage (cubic feet)	44	42	40	45	22	38	37	41	35	31	55	39	29	28
Number of drawers	8	6	4	4	2	2	2	4	2	0	7	5	1	1
Fold down linen closet	-	S	S	-	-	-	-	-	-	-	-	-	-	-
Outside storage access	S	S	S	-	-	-	-	-	-	-	S	-	-	-

S-Standard Equipment O-Optional Equipment - Not Available UF-Under Floor SL-Swing-Level FO-Fold Over

Your local Coleman dealer is:

FLEETWOOD FOLDING TRAILERS, INC.
R.D. 2 • Somerset, PA 15501

FLEETWOOD ENTERPRISES, INC.
P.O. Box 7638 • Riverside, CA 92513-7638

BY FLEETWOOD®

Coleman and the Coleman Parallelogram are registered trademarks of The Coleman Company, Inc. used under license.

Litho in USA 8/92 - Edition 1
V-40415