



*More camping fun per gallon.*



Your gas-saving camping choice for the 80's:  
**Coleman® Fold-Down Camping Trailers**

Dr. Ronald Weiers

University professor and author,  
*Chilton's More Miles Per Gallon, 2nd Edition.*  
Automotive, Marketing and Fuel Economy  
Consultant to: U.S. Dept. of Transportation  
National Highway Traffic Safety Admin.  
Society of Automotive Engineers  
U.S. Dept. of Energy



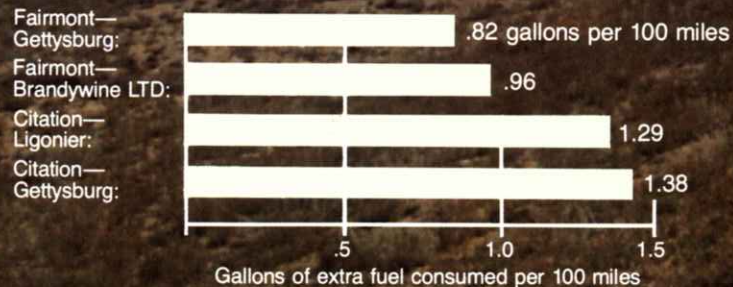
# Independent tests prove: towing a Cole

"During family vacations, I've found that pulling a camping trailer usually takes a lot less fuel than people think. With the car breaking a path through the air, the trailer doesn't have so much wind resistance to overcome. In addition, light weight and a low, streamlined profile also help to minimize the cost of trailer camping.



Tow cars: 1979 Ford Fairmont (6-cyl., auto., standard equip.),  
1980 Chevy Citation (4-cyl., auto., standard equip.).  
Mileage tests were conducted in both directions over a 28.7-mile  
course of all-terrain highway. Cruise controls were not used.

## Test Results\*



\*Full test details available upon request from The Coleman Company, Inc.,  
Camping Trailer Division.



# man takes only about one extra gallon of gas per 100 miles.

"When I set out to test the 1980 Coleman Campers, my objective was simple. Find out how much extra gas it takes to tow a Coleman. Under real road conditions, on a highway with real hills and curves.

"With gasoline prices and availability on the minds of everyone, it was an important question to answer—and one that could be tested scientifically.

"To make sure the test was representative, I chose two different towing cars, a Ford Fairmont and a Chevy Citation, and three different Coleman Campers: the six-sleeper Ligonier, the seven-sleeper Gettysburg and the eight-sleeper Brandywine LTD.

"Here's what I found. Towing the Gettysburg, the Fairmont required extra fuel at the rate of .82 gallons of gas per 100 miles. With the larger Brandywine LTD in tow, the results showed .96 extra gallons per 100 miles.

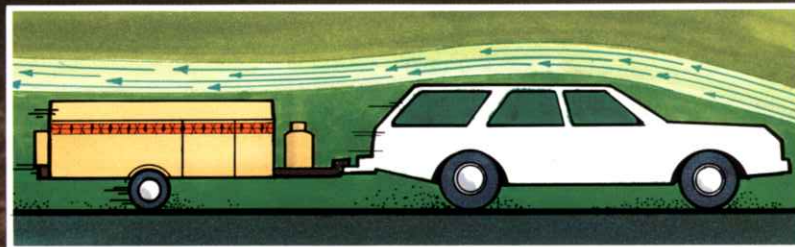
"Tests with the smaller Citation produced similar results. Towing the Ligonier took 1.29 extra gallons per 100 miles, while the Gettysburg increased consumption by 1.38 gallons.

"The use of more bulky towing vehicles would have resulted in even less extra fuel being consumed by the camping trailers. However, I felt

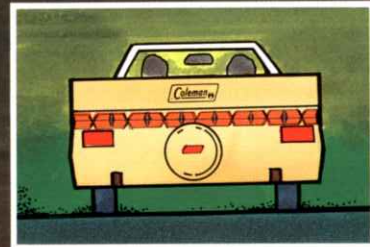
that vans and large-size station wagons would not be representative of the cars likely to be towing family camping trailers in the 1980's.

"My conclusions? While exact mileage figures may vary with different towing cars, different Coleman models, weather, driving habits and other operating conditions, it's fair to say that *towing a Coleman takes only about one extra gallon of gas per 100 miles.*"

## Why Coleman Campers offer real fuel economy.



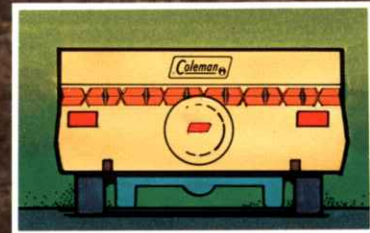
**Coleman's low profile**—lower by several inches than competitive models—cuts wind drag for improved mileage, less buffeting on the highway.



**Excellent rear visibility**—that same low profile also gives you rear view visibility over the trailer, not just around it.



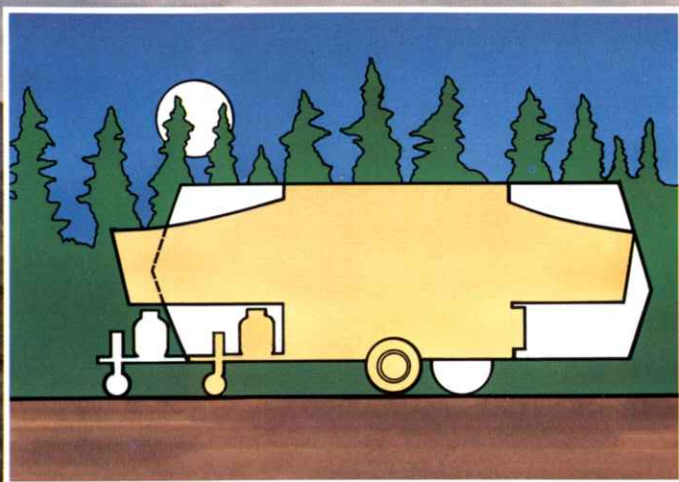
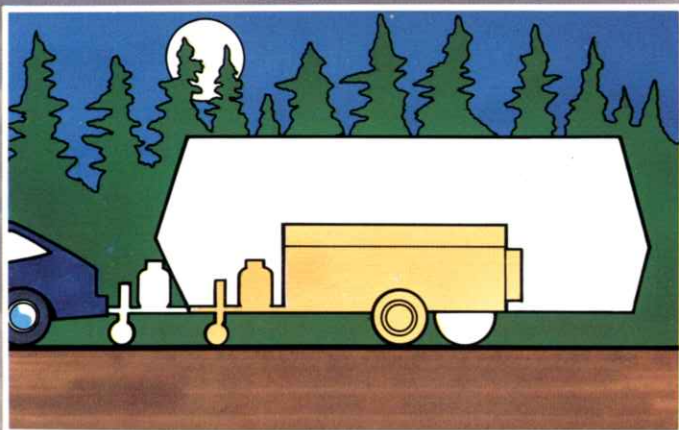
**Light weight** means gas savings, too. It's the product of careful engineering that designs in extra strength without extra weight—as in Coleman's tubular steel frame and machine-stamped sidewall construction. In fact, the hitch weight of every Coleman Camper is under 200 lbs. The smaller, lighter cars of the 80's are just catching up with Coleman!



**A wide track stance** combines with Coleman's low center of gravity for road-hugging stability and better tracking. That translates into easier towing—and better mileage wherever you go camping. Tires on Coleman are also low profile and wider than most to maintain the stable towing performance that lets you relax and enjoy the trip.



**Fuel economy in towing, yes.  
Sacrifice in space, comfort  
or standard features, never!**



Compared to a conventional travel trailer, a Coleman Camper means much less strain on your towing vehicle and better mileage (top). But when unfolded (bottom), Coleman gives you spacious living area for the whole family!

Extra thick 4" mattresses are standard on most models for added sleeping comfort.

An exclusive removable dinette table is free-standing for use inside or out.



Wing bed supports are attached and self-storing—a Coleman deluxe feature.

Four adjustable stabilizer jacks are built-in, one on each corner—a standard Coleman exclusive—for easy leveling that lasts.

Not shown: a patented Conestoga wing bed design with recessed end windows for ventilation even in rain and—a Coleman exclusive—36" of headroom to let you sit up in bed without hitting your head; big windows with clear vinyl flaps on both sides for a better view and more fresh air; a one-piece screen door to keep out bugs and vinyl-backed drapes to eliminate night shadowing.

Coleman's Stepper™ makes entrance easy and locks for security with the trailer up or down.

# Welcome to Coleman Country, where family fun features are standard!

Fully-equipped Coleman Campers are made for the energy-saving cars of the 80's...and for the free-spirited, adventurous families of today. Families like yours, who want just the right touch of convenience at the campsite. Check out these features—you'll see why Coleman has the right touch for your family camping fun!

Roomy storage areas include a chest of drawers on many full-sized models.

Standard on most models is a 3-way ice box that loads at home, is accessible on the road and stands upright at counter height when camping.

A potty cabinet, standard on some models, provides ideal storage for your portable camping toilet.



Two Posi-crank lift system positions let you put up the top with ease.

Flip-up dolly jack is attached to prevent loss, yet easily swings up to avoid low-spot scrapes.

Standard on LTD models is a huge 75"x72" queen-sized bed—and an electric water pump for running tap water at the twist of a wrist.



# Rebel and Ligonier

## Family-size fun at under 900 lbs. each!

At a curb weight of under 900 lbs. each and a super-low profile of 44", these variations on a compact theme tow easily behind any car—even a *subcompact*.

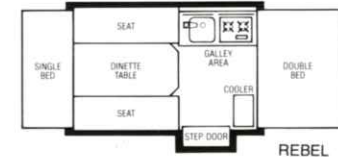
But once unfolded, the Rebel and Ligonier are happy songs of spacious camping!

The Rebel sleeps five, and features a roomy galley area with a two-burner range and

a stainless steel sink for convenient meal preparation.

With two double beds including the Expanda-Bed™, the Ligonier adds sleeping space for six to the Coleman standards of convenience mentioned above. A removable dinette table also adds versatility.

Two for the road and two for value: the economical Rebel and Ligonier by Coleman!



Folded out at the campsite, the Rebel demonstrates the roominess that makes it one of the best camping values on wheels.



Standard on all models is a handy sink cover for extra counter area.



An exclusive Conestoga wingbed design includes recessed end windows for ventilation even in the rain. Large vinyl windows make for a great view.



The welcome mat on every Coleman Camper is a giant Stepper™ for safety and storage.



When you draw the vinyl-backed drapes—only on Coleman—no one sees shadows.



City water and 115V electrical hookups are standard equipment.



Choose from two Posi-crank lift system positions for fast or slow unfolding.



Enjoy your meals indoors or out—Coleman's removable dinette table gives your family the option.



A 12V converter, standard on all models but the Rebel, lets you choose battery operation or 115V electrical power for lights and appliances.



Bugs stay outside where they belong with Coleman's fine mesh screen.





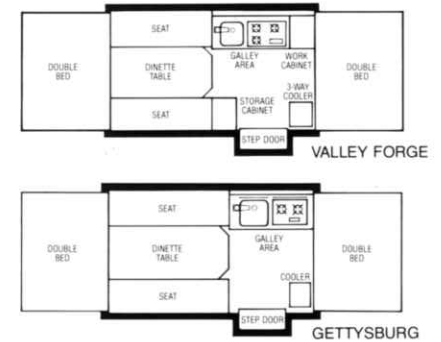
# Valley Forge® and Gettysburg®

## Our most popular fold-downs for family campers!

And no wonder! These mid-size Coleman Campers offer interiors to make any family feel at home...and enough storage space to carry some of "home" along!

The Valley Forge packs 45 cu. ft. of cabinet storage into a layout that includes a handy work cabinet alongside the three-burner galley range.

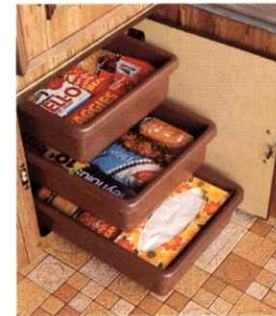
In the Gettysburg, under-seat storage is increased by a larger dinette that converts into a bed 56"x73". With double beds on both ends, that means sleeping space for up to seven—so the large family can even bring friends along for the fun!



A warm autumn gold interior is new this year for the Valley Forge, a real family favorite.



This 3-way ice box is unmatched in versatility and convenience.



Deep, roomy galley drawers protect their contents even on the road.



A sliding privacy panel enhances the one-piece screen door.



Wingbed supports are easy to place, attached to prevent loss.



Flip-up dolly jack features attached wheel that swings up to avoid low-spot towing scrapes.



Self-storing stabilizer jacks on each corner mean easy leveling that lasts.



Standard on many models is a handy wardrobe rack.



# Brandywine<sup>®</sup>, Saratoga and Ticonderoga

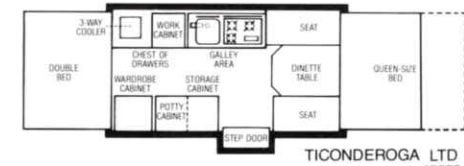
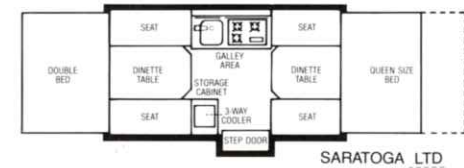
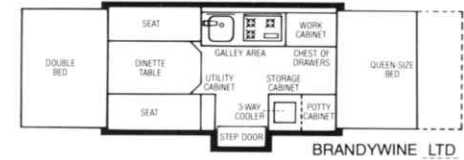
## Luxury camping for full-size families—plus the LTD's!

Camping has never meant so much comfort for so many! The full-size Brandywine, Saratoga and Ticonderoga are the Coleman answers to how seven, eight, and even nine-member families can camp in luxury!

Choose one of the three basic models, some equipped with special features like potty

storage cabinets and chests of drawers. Or go all out with an LTD, adding extras like a queen-size bed and running tap water to the basic layout of your choice.

No matter which you choose, get ready to enjoy camping as never before...the full-size fun-feature Coleman way!



Campfires are cozier when the family can look forward to a good night's sleep in a Ticonderoga.



No one in the industry matches Coleman's 36" of sit-up headroom.



For real stretch-out luxury, indulge in an LTD model and its huge queen-size bed. A 4" thick mattress tops off the comfort.



Sunshine, fresh air and the great outdoors... that's the Coleman Country a Brandywine offers.



A wardrobe cabinet is a luxurious Ticonderoga exclusive.



A roomy chest of drawers makes the living easy in the Brandywine and Ticonderoga.



Standard on some models is a potty storage cabinet.



Running water at the turn of a tap is an LTD standard.



# Country Squire II and Country Squire Jr.

**Unfold to twice the bed size of your pickup or mini!**

Now Coleman Country extends to wherever your pickup can take you! Because with a Country Squire Folding Pickup Camper, you carry your campsite right in your pickup bed.

In transit, the Country Squire folds to a low profile—just above cab height—to cut wind drag and provide better stability. Then it folds out to six feet of headroom and a living area twice the size of your pickup bed!

The Country Squire II has plenty of interior conveniences, like a complete galley and a removable dinette table. And for mini-pickup owners, the Country Squire Jr. is a perfect fit with the same basic features.

Extend your hunting, fishing and camping fun with a Country Squire Folding Pickup Camper!



The Country Squire Jr. turns your mini-pickup into a spacious traveling camper for hunting, fishing or just getting away from it all. Maxi comfort for mini trucks!



Like all Coleman Campers, the Country Squire II is color-coordinated for style and laid out for convenience. Beds are a big 88" x 44".



A proven mechanical lift system makes set-up quick and easy.



A low profile means less wind drag in transit—no matter what's in tow.



A roomy galley area adds a welcome touch of home to the Country Squire II interior.

# Comparative Specifications

Prices, specifications and design are subject to change without notice. All material meets or exceeds applicable flame-retardant standards.

MODELS		Rebel	Gettysburg	Ligonier	Valley Forge	Brandywine	Brandywine LTD	Saratoga	Saratoga LTD	Ticonderoga	Ticonderoga LTD
<b>Construction Facts:</b>	Extruded aluminum, styrofoam sandwich panel	S	S	S	S	S	S	S	S	S	S
	Interlock steel frame	S	S	S	S	S	S	S	S	S	S
	Spare tire mount	S	S	S	S	S	S	S	S	S	S
	Fire-retardant 10.1 army duck canvas and zipper	S	S	S	S	S	S	S	S	S	S
<b>Towing Facts:</b>	Road height	44"	47"	44"	47"	46"	46"	46"	46"	46"	46"
	*Hitch weight (lbs.)	100	100	100	100	140	150	150	160	160	170
	*Curb weight (lbs.)	870	1150	890	1150	1310	1335	1300	1325	1335	1360
	Trailer size (closed)	6'8"x10'11"	6'8"x12'6"	6'8"x10'11"	6'8"x12'6"	6'8"x14'6"	6'8"x14'6"	6'8"x14'6"	6'8"x14'6"	6'8"x14'6"	6'8"x14'6"
	Electric brakes	0	0	0	0	0	0	0	0	0	0
	Sliding leaf spring suspension	S	S	S	S	S	S	S	S	S	S
	Safety chains and 1 1/2" ball coupler	S	S	S	S	S	S	S	S	S	S
	Tire size	4.80x8	20.5x8.0x10	5.70x8	20.5x8.0x10	20.5x8.0x10	20.5x8.0x10	20.5x8.0x10	20.5x8.0x10	20.5x8.0x10	20.5x8.0x10
	Hub caps	0	0	S	S	S	S	S	S	S	S
	Body color w/stripes	Mt. Vernon Cream/Russet	Mt. Vernon Cream/Russet	Mt. Vernon Cream/Poppy Red	Mt. Vernon Cream/Autumn Gold	Mt. Vernon Cream/Autumn Gold	Mt. Vernon Cream/Autumn Gold	Mt. Vernon Cream/Russet	Mt. Vernon Cream/Russet	Mt. Vernon Cream/Poppy Red	Mt. Vernon Cream/Poppy Red
<b>Set-Up Facts:</b>	Crank positions w/ratchet	2	2-R	2	2-R	2-R	2-R	2-R	2-R	2-R	2-R
	Swing-up tongue jack	S	S	S	S	S	S	S	S	S	S
	Attached stabilizers	4	4	4	4	4	4	4	4	4	4
	Extruded aluminum one-piece door w/sliding privacy panel	S	S	S	S	S	S	S	S	S	S
	Step door	S	S	S	S	S-w/Light	S-w/Light	S-w/Light	S-w/Light	S-w/Light	S-w/Light
	12-volt auto extension	S	0	0	0	0	0	0	0	0	0
	City water hookup	S	S	S	S	S	S	S	S	S	S
	12V converter	N/A	S	S	S	S	S	S	S	S	S
	115V electrical outlets	2	3	3	3	3	3	3	3	3	3
	Outside sink drainage system	S	S	S	S	S	S	S	S	S	S
	<b>Living Features:</b>	4-way ventilation w/screening	S	S	S	S	S	S	S	S	S
Clear vinyl storm windows		2	2	2	2	2	2	2	2	2	2
Trailer size (open)		6'8"x15'10"	6'8"x19'4"	6'8"x17'6"	6'8"x19'4"	6'8"x21'4"	6'8"x23'4"	6'8"x21'4"	6'8"x23'4"	6'8"x21'4"	6'8"x23'4"
Floor area		6'2"x6'10"	6'2"x8'6"	6'2"x6'10"	6'2"x8'6"	6'2"x10'6"	6'2"x10'6"	6'2"x10'6"	6'2"x10'6"	6'2"x10'6"	6'2"x10'6"
Interior height (open)		6'5"	6'5"	6'5"	6'5"	6'5"	6'5"	6'5"	6'5"	6'5"	6'5"
Overhead dome lights		1	2	2	2	2	2	2	2	2	2
Drapes w/tie backs		S	S	S	S	S	S	S	S	S	S
Cushioned vinyl floor covering		S	S	S	S	S	S	S	S	S	S
<b>Dining Features:</b>	Coleman 3-way convertible ice box	0	S	0	S	S	S	S	S	S	S
	Galley work cabinet	N/A	N/A	N/A	S	S	S	N/A	N/A	S	S
	Hi-lo kitchen unit	S	S	S	S	S	S	S	S	S	S
	Poly-Life® cooler	40 Qt.	N/A	48 Qt.	N/A	N/A	N/A	N/A	N/A	N/A	N/A
	2-burner range w/cover and stainless steel sink	S-w/Porcelain	N/A	S	N/A	N/A	N/A	N/A	N/A	N/A	N/A
	3-burner range w/cover and stainless steel sink	N/A	S	N/A	S	S	S	S	S	S	S
	Dinette table (free-standing) sizes	38"x30"	48"x30"	38"x30"	38"x30"	48"x30"	48"x30"	38"x30"(2)	38"x30"(2)	38"x30"	38"x30"
<b>Sleeping Features:</b>	Sleeping capacity	5	7	6	6	7	8	8	9	6	7
	Wing beds x 2	S	S	S	S	S	S	S	S	S	S
	Mattress size x 2	30"x72"-51"x72"	51"x72"(2)	51"x72"(2)	51"x72"(2)	51"x72"(2)	51"x72"-75"x72"	51"x72"(2)	51"x72"-75"x72"	51"x72"(2)	51"x72"-75"x72"
	Mattress thickness	3"	4"	3"	4"	4"	4"	4"	4"	4"	4"
	Convertible dinette bed size	40"x73"	56"x73"	40"x73"	40"x73"	56"x73"	56"x73"	40"x73"(2)	40"x73"(2)	40"x73"	40"x73"
	Vinyl-covered canvas over beds	S	S	S	S	S	S	S	S	S	S
<b>Storage Features:</b>	Gas bottle and regulator	S	S	S	S	S	S	S	S	S	S
	Built-in water tank w/fill spout (10 gal.)	N/A	S	S	S	S	S-w/Electric pump	S	S-w/Electric pump	S	S-w/Electric pump
	Portable water tank (5 gal.)	S	N/A	N/A	N/A	N/A	N/A	N/A	N/A	N/A	N/A
	Cabinet storage - (cu. ft.)	39	42	39	45	59	59	48	48	62	62
	Potty storage cabinet	N/A	N/A	N/A	N/A	S	S	N/A	N/A	S	S
	Wardrobe cabinet	N/A	N/A	N/A	N/A	N/A	N/A	N/A	N/A	S	S
	Chest of drawers	N/A	N/A	N/A	N/A	S	S	N/A	N/A	S	S
	Wardrobe rack	0	0	0	0	S	S	N/A	N/A	N/A	N/A

S-standard equipment; 0-optional; N/A-not available \*Less optional accessories and coupled to tow vehicle.

More camping fun per gallon.



The Coleman Company, Inc. Camping Trailer Division  
Somerset, PA 15501

The Coleman Company, Inc., reserves the right to make changes at any time without notice in prices, color, material specifications and models. Camping and trailer equipment depicted in product photography may be optional at additional cost. Consult your Coleman dealer for details. "Coleman," "Valley Forge," "Gettysburg" and "Brandywine" are registered names for products made by The Coleman Company, Inc. "Step-per" and "Expand-a-Bed" are registered trademarks.

Litho in U.S.A.  
Copyright ©, 1979 by The Coleman Company, Inc.  
Form No. FL-7946